

JOB NAME _____
 ARCHITECT _____
 ENGINEER _____
 CONTRACTOR _____
 LOCATION _____

SUBMITTAL SHEET
 Form Number DS0804.1 Effective Date 3/01
 Replaces FORM DS0804

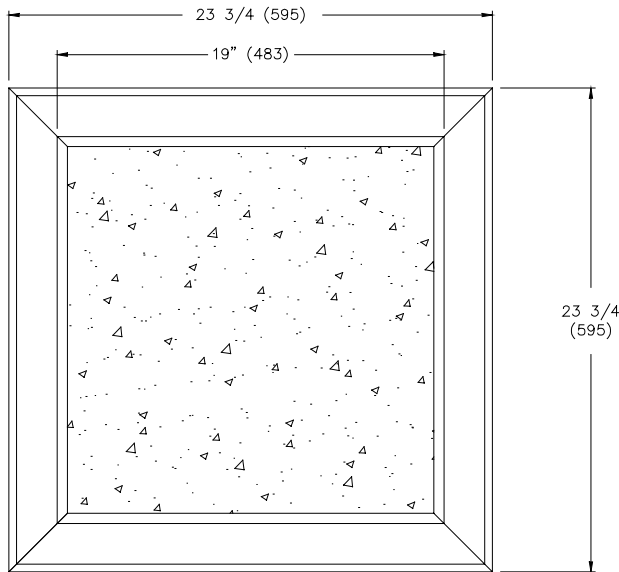
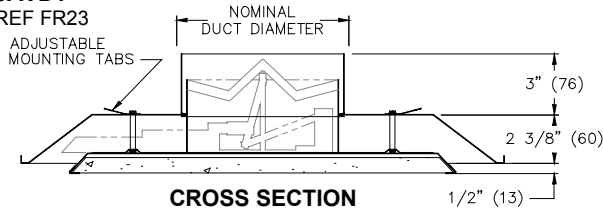


AVDT 24 / 5AVDT 24

ARCHITECTURAL STYLE, THERMALLY ACTUATED CEILING DIFFUSER

- ☐ **AVDT**
- ☐ **5AVDT**

REF FR23



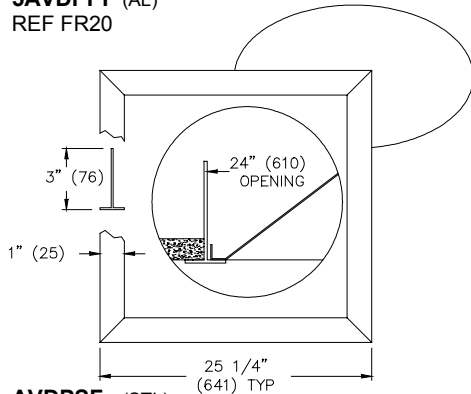
FACE VIEW
 ARCHITECTURAL TILE INSTALLED
 SEE NOTE 2

NOTES :

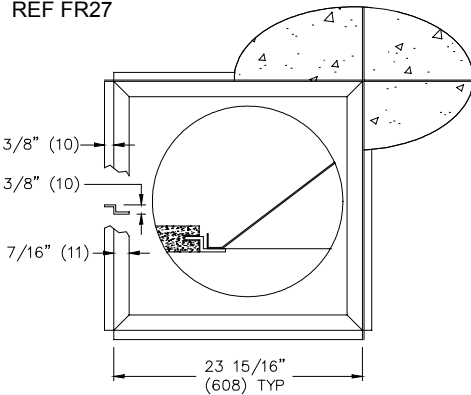
1. SERIES USES A UNIQUE THERMAL ELEMENT TO CONTROL TEMPERATURE AT THE DIFFUSER. ADJUSTABLE WITH A SCREWDRIVER, UNITS REQUIRE NO ELECTRICAL OR PNEUMATIC CONNECTIONS TO ADJUST AIR FLOW BASED ON SPACE REQUIREMENTS.
2. ARCHITECTURAL TILE FACE IS EASILY INSTALLED AND REPLACEABLE IN THE FIELD. ALL TILE AND 'T' BARS ARE TO BE PROVIDED BY OTHERS.
3. 8", 10", 12", OR 14" ROUND INLETS ARE AVAILABLE.
4. 4-WAY BLOW PATTERN IS STANDARD. TO ALTER PATTERNS **DBTAB / 5DBTAB** ACCESSORIES ARE OFFERED SEPARATELY.
5. **AVDT** CONSTRUCTION IS 24 GA ELECTRO GALVANIZED STEEL.
6. **5AVSDT** CONSTRUCTION IS .03 ALUMINUM.
7. STANDARD FINISH IS WHITE.
8. SEE FORM **DS0805** FOR SIMILAR BASIC SUPPLY SERIES ASDT / 5ASDT

DIMENSIONS ARE SHOWN AS - INCHES (MM)

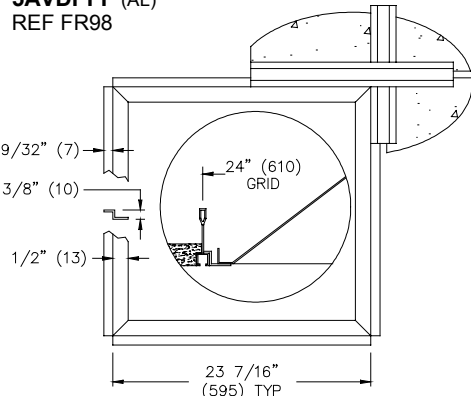
- ☐ **AVDPPF** (STL)
- ☐ **5AVDPPF** (AL)



- ☐ **AVDPSF** (STL)
- ☐ **5AVDPSF** (AL)



- ☐ **AVDPPF** (STL)
- ☐ **5AVDPPF** (AL)



OPTIONAL ADAPTER FRAME DETAILS
 TO BE ORDERED SEPARATELY - NTS

Product Information is Subject to Change Without Notice