

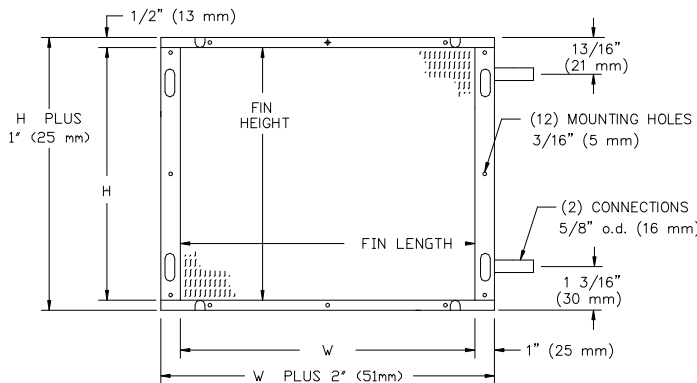
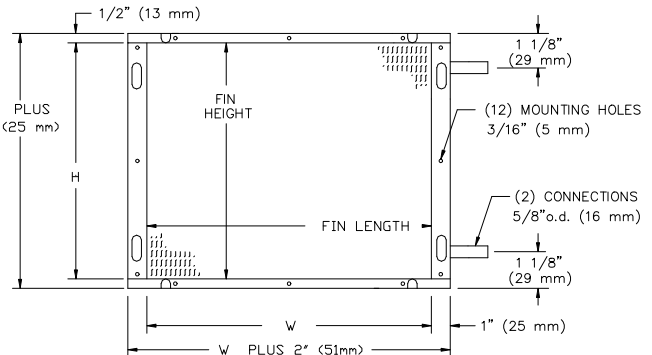
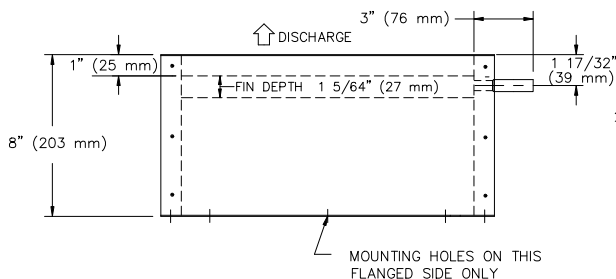
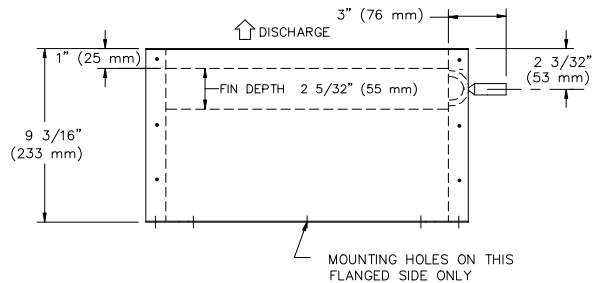
JOB NAME _____
 ARCHITECT _____
 ENGINEER _____
 CONTRACTOR _____
 LOCATION _____

SUBMITTAL SHEET
 Form Number TUS309.3 Effective Date 11/03
 replaces TUS309.2



QFC / QFV
HOT WATER COILS - 1 ROW & 2 ROW

MODEL	UNIT SIZE	W	H
QFC 1 ROW	2	15" (381 mm)	12 1/2" (318 mm)
	3	15" (381 mm)	12 1/2" (318 mm)
	4	22" (559 mm)	12 1/2" (318 mm)
	5	22" (559 mm)	15" (381 mm)
	6	24 1/2" (622 mm)	15" (381 mm)
QFV 1 ROW	2	15" (381 mm)	12 1/2" (318 mm)
	3	15" (381 mm)	12 1/2" (318 mm)
	4	22" (559 mm)	12 1/2" (318 mm)
	5	22" (559 mm)	15" (381 mm)
	6	24 1/2" (622 mm)	15" (381 mm)
7	24 1/2" (622 mm)	15" (381 mm)	



2 ROW HOT WATER COIL

MODEL	UNIT SIZE	W	H
QFC 2 ROW	2	15" (381 mm)	12 1/2" (318 mm)
	3	15" (381 mm)	12 1/2" (318 mm)
	4	22" (559 mm)	12 1/2" (318 mm)
	5	22" (559 mm)	15" (381 mm)
	6	24 1/2" (622 mm)	15" (381 mm)
QFV 2 ROW	2	15" (381 mm)	12 1/2" (318 mm)
	3	15" (381 mm)	12 1/2" (318 mm)
	4	22" (559 mm)	12 1/2" (318 mm)
	5	22" (559 mm)	15" (381 mm)
	6	24 1/2" (622 mm)	15" (381 mm)
7	24 1/2" (622 mm)	15" (381 mm)	

1 ROW HOT WATER COIL

STANDARD FEATURES:

- Connection Tubing - .63" diameter male fitting.
- Coil Casing – 20 Ga. Galvanized steel.
- Coil Tubing – .50" diameter x .017" thick copper.
- Coil Fins – .0045" thick aluminum, 10 per inch, mechanically bonded to tubing.
- Coils are leak tested to 400 psi
- Coils are not for steam applications

OPTIONS:

- Coils are available with a vent and drain

NOTE: Dimensions are given in inches and (mm)