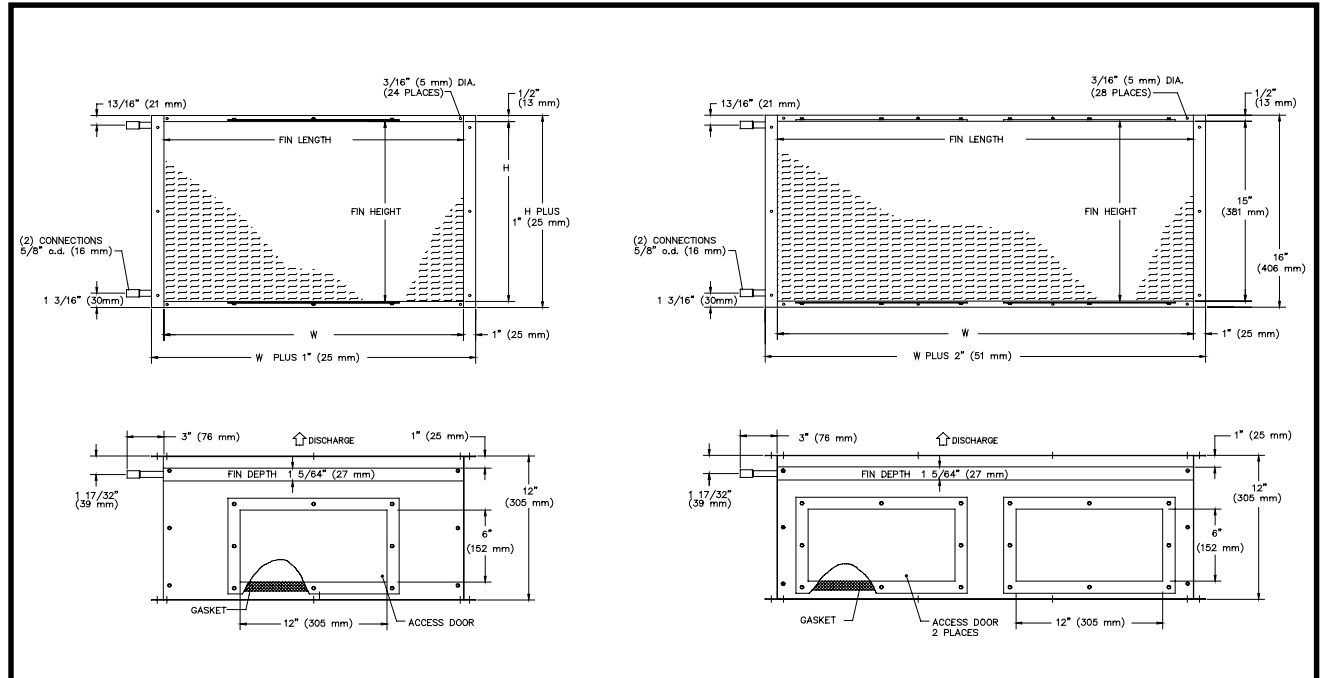


JOB NAME _____
 ARCHITECT _____
 ENGINEER _____
 CONTRACTOR _____
 LOCATION _____

SUBMITTAL SHEET
 Form Number TUS310.3 Effective Date 11/03
 replaces TUS310.2



QFC / QFV
HOT WATER COILS w/ ACCESS DOORS - 1 ROW



CONSTRUCTION TYPICAL OF UNIT SIZES 2 - 6

QFC UNIT SIZE 7

MODEL	UNIT SIZE	W	H
QFC 1 ROW	2	15" (381 mm)	12 1/2" (318 mm)
	3	15" (381 mm)	12 1/2" (318 mm)
	4	22" (559 mm)	12 1/2" (318 mm)
	5	22" (559 mm)	15" (381 mm)
	6	24 1/2" (622 mm)	15" (381 mm)
	7	34" (864 mm)	15" (381 mm)
	QFV 1 ROW	2	15" (381 mm)
3		15" (381 mm)	12 1/2" (318 mm)
4		22" (559 mm)	12 1/2" (318 mm)
5		22" (559 mm)	15" (381 mm)
6		24 1/2" (622 mm)	15" (381 mm)
7		24 1/2" (622 mm)	15" (381 mm)

STANDARD FEATURES:

- Connection Tubing - .63" diameter male fitting.
- Coil Casing - 20 Ga. Galvanized steel.
- Coil Tubing - .50" diameter x .017" thick copper.
- Coil Fins - .0045" thick aluminum, 10 per inch, mechanically bonded to tubing.
- Coils are leak tested to 400 psi.
- Coils are not for steam applications.

OPTIONS:

- Coils are available with a vent and drain

NOTES: Dimensions are given in inches and (mm)