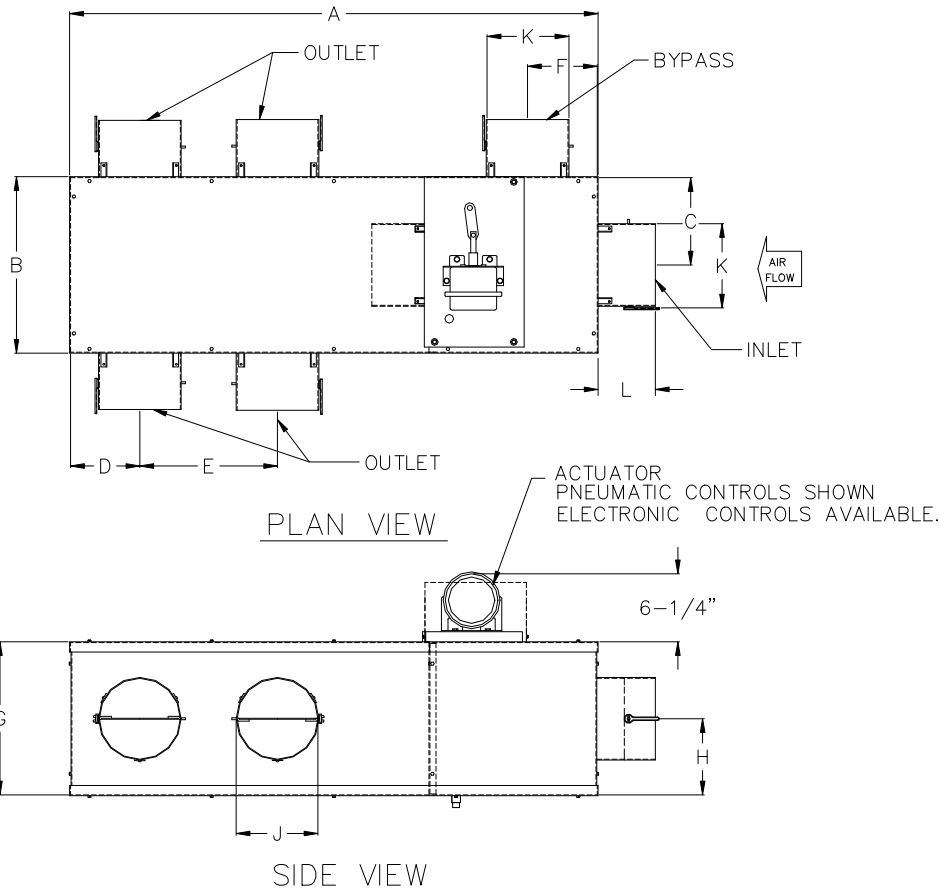


JOB NAME \_\_\_\_\_  
 ARCHITECT \_\_\_\_\_  
 ENGINEER \_\_\_\_\_  
 CONTRACTOR \_\_\_\_\_  
 LOCATION \_\_\_\_\_

**SUBMITTAL SHEET**  
 Form Number GS0702.1 Effective Date 4/09



## KLB BYPASS TERMINAL UNIT With Pneumatic or Electronic Controls, Multiple Outlet



Inlet Size	A	B	C	D	E	F	G	H	J	K	L
6	38-3/8	12-7/8	7-1/8	5-1/8	10	5-1/4	11-1/8	5-9/16	5-7/8	5-7/8	4-1/4
8	38-3/8	12-7/8	7-1/8	5-1/8	10	5-1/4	11-1/8	5-9/16	5-7/8	7-7/8	5-1/4
10	44-3/8	14-7/8	8-1/8	6-1/8	12	6-1/4	13-1/8	6-9/16	7-7/8	9-7/8	6-1/4
12	52-3/8	18-7/8	10-1/8	6-1/8	12	8-1/4	17-1/8	8-9/16	7-7/8	11-7/8	7-1/4
14	52-3/8	18-7/8	10-1/8	6-1/8	12	8-1/4	17-1/8	8-9/16	9-7/8	13-7/8	8-1/4
16	56-3/8	22-7/8	12-1/8	7-1/8	14	10-1/4	21-1/8	10-9/16	9-7/8	15-7/8	9-1/4
18	56-3/8	22-7/8	12-1/8	7-1/8	14	10-1/4	21-1/8	10-9/16	9-7/8	17-7/8	10-1/4

**NOTES:**

1. 20 ga. Steel construction.
2. Electronic and pneumatic controls available.
3. "D" dimension is diameter of inlet, bypass and multiple outlet connections.
4. Damper operates on a 0-20 psi, or 24 Volt thermostat signal.

**ACCESSORIES:**

- Hanger Brackets
- Damper, Manual Inlet
- Damper, Manual 1 each for multiple outlet
- Thermostat
- Transformer