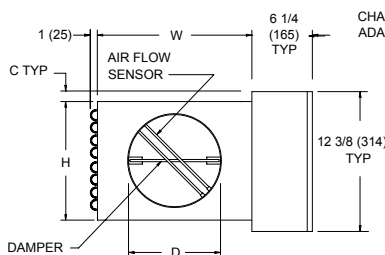


JOB NAME _____
 ARCHITECT _____
 ENGINEER _____
 CONTRACTOR _____
 LOCATION _____

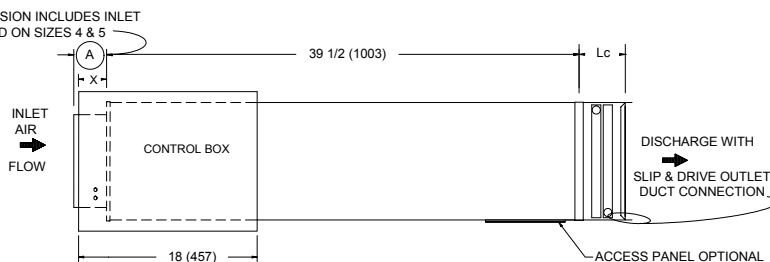
SUBMITTAL SHEET
 Form Number TS0021-EC.2 Effective Date 7/04
 Replaces FORM TS0021-EC.1



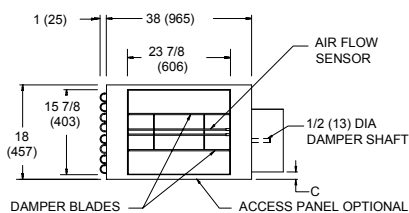
LMHS
ATTENUATOR UNIT - HOT WATER HEAT - ELECTRONIC CONTROL



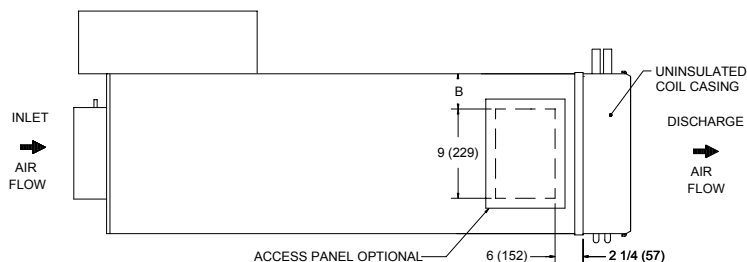
INLET VIEW - SIZES 4-16



SIDE VIEW



INLET VIEW - SIZE 22



BOTTOM VIEW

STANDARD FEATURES:

- 22 Ga. Zinc coated steel construction.
- **NEMA 1** steel control enclosure for electric or electronic components
- 1/2" thick dual density fiberglass insulation meeting **NFPA 90A** and **UL 181** safety requirements.
- Linear averaging sensor.
- Hot water coils. See form TS0005 for dimensions and specifications
- Variety of analog and digital control packages for pressure independent systems.
- **ETL** listed – Adherence to **UL 429** for electrically operated valves.

OPTIONAL FEATURES:

- 20 Ga. Zinc coated steel construction
- Liners:
 - Cellular insulation
 - Steriliner
 - Sterilwall
 - Perf double wall
- 1" dual density fiberglass insulation
- Four quadrant averaging cross flow sensor
- Disconnect switch for electronic controls
- Dust tight control enclosure
- 24 volt transformer.
- Left hand control.
- Left hand water coil connection
- Bottom access panel
- Cam lock bottom access panel
- None
- Steriliner
- Perf double wall
- Right hand control.
- Right hand water coil connection.
- Hanger brackets.

NOTE: Right hand unit configuration shown, left hand is available.
 Right hand water coil connection shown, left hand coil connection is available.

DIMENSIONS ARE GIVEN AS INCHES (MM)

LMHS ATTENUATOR UNIT WITH HOT WATER REHEAT

INLET SIZE	NOM MAX CFM (L/S)	W	H	A	B	C	D	X	Lc
4	230 (109)	12 (305)	8 (203)	5 3/8 (136)	1 1/2 (38)	2 1/8 (54)	3 7/8 (98)	7 1/4 (184)	SEE FORM TS0005
5	360 (170)	12 (305)	8 (203)	5 3/8 (136)	1 1/2 (38)	2 1/8 (54)	4 7/8 (124)	7 1/4 (184)	
6	520 (245)	12 (305)	8 (203)	3 3/8 (86)	1 1/2 (38)	2 1/8 (54)	5 7/8 (149)	7 1/4 (184)	
7	710 (335)	12 (305)	10 (254)	3 3/8 (86)	1 1/2 (38)	1 1/8 (29)	6 7/8 (175)	7 1/4 (184)	
8	925 (437)	12 (305)	10 (254)	3 3/8 (86)	1 1/2 (38)	1 1/8 (29)	7 7/8 (200)	7 1/4 (184)	
9	1200 (566)	14 (356)	12 1/2 (318)	3 3/8 (86)	2 1/2 (64)	-	8 7/8 (225)	5 1/4 (133)	
10	1450 (685)	14 (356)	12 1/2 (318)	3 3/8 (86)	2 1/2 (64)	-	9 7/8 (251)	5 1/4 (133)	
12	2100 (991)	16 (406)	15 (381)	3 3/8 (86)	3 1/2 (89)	-	11 7/8 (302)	5 1/4 (133)	
14	2900 (1369)	20 (508)	17 1/2 (445)	3 3/8 (86)	5 1/2 (140)	-	13 7/8 (352)	3 1/4 (83)	
16	3700 (1746)	24 (610)	18 (457)	3 3/8 (86)	7 1/2 (191)	-	15 7/8 (403)	3 1/4 (83)	
22	7100 (3351)	38 (965)	18 (457)	4 1/4 (108)	14 1/2 (368)	1 1/8 (29)	SEE ABOVE	5 1/4 (133)	