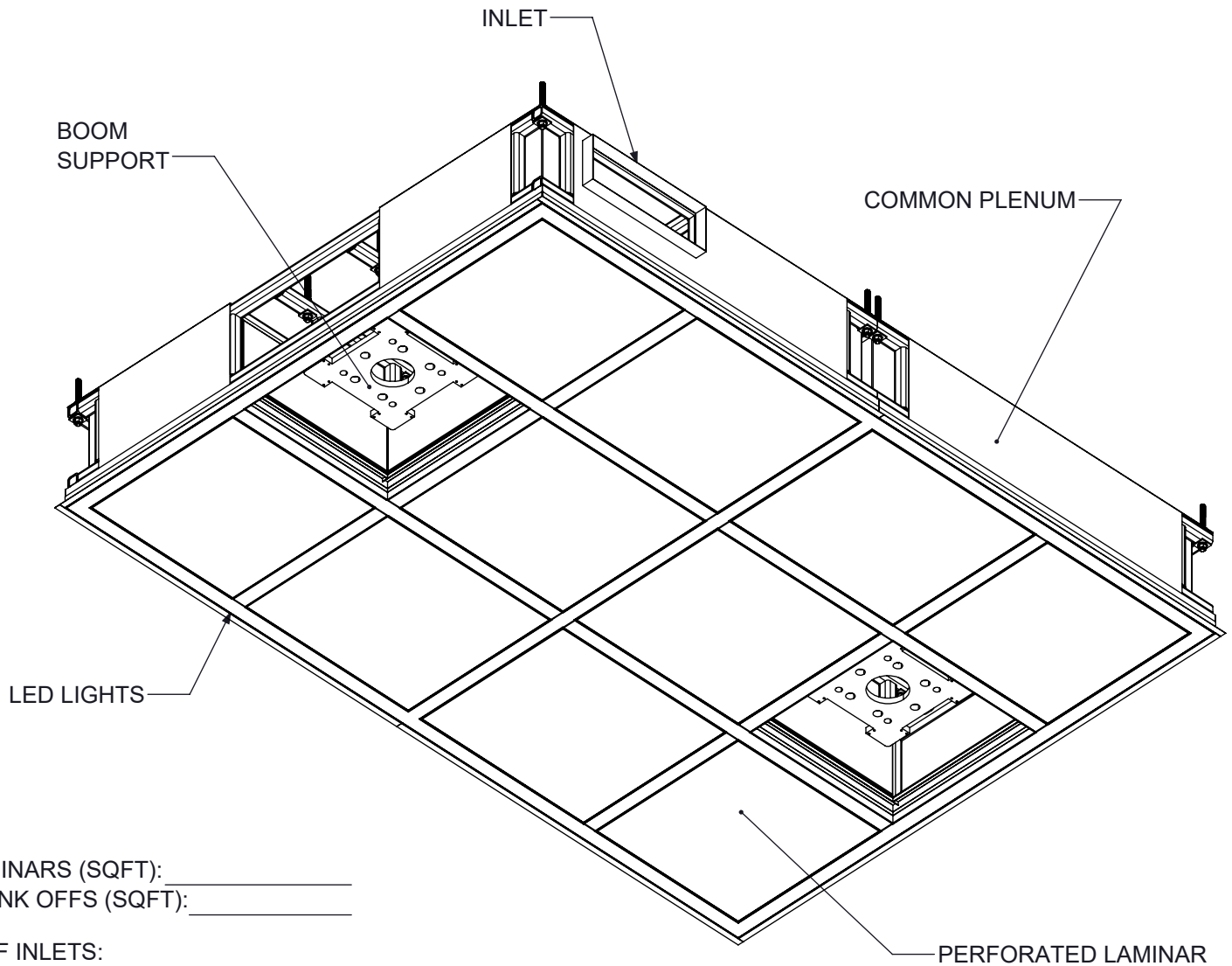


STERILSUITE-SD

OPERATING ROOM CEILING SYSTEM STRUCTURAL

JOB NAME _____
ENGINEER _____
CONTRACTOR _____
TAG _____

SUBMITTAL SHEET



LAMINARS (SQFT): _____
BLANK OFFS (SQFT): _____

OF INLETS: _____
INLET SIZE (W x H): _____

NOTES:

1. Customizable, modular ceiling system with common plenum design and integrated LED lighting
2. Steel plenum and structure
3. Gel Seal, Knife Edge Standard
4. Laminar flow arrangement to meet ASHRAE 170 OR design requirements
5. Low profile Common plenum allows ease of integration into new or existing building
6. Integrated White LED lighting, tunable and dimmable
7. Integral Full Face Slide Damper Face accessible through laminar face
8. Hanger tabs with All-Thread Holes and Threaded Rods
9. Blank offs and Access panels provided where needed
10. Load bearing boom supports as needed

DIMENSIONS GIVEN AS INCHES [MM]

Laminar Construction

- ☐ Aluminum (Standard)
- ☐ 304 Stainless Steel
- ☐ 316 Stainless Steel

Optional Features

- ☐ HEPA Filter
- ☐ ULPA Filter
- ☐ 1.5" External Insulation
- ☐ Custom LED Colors

Finish

- ☐ Antimicrobial White
- ☐ Custom Colors

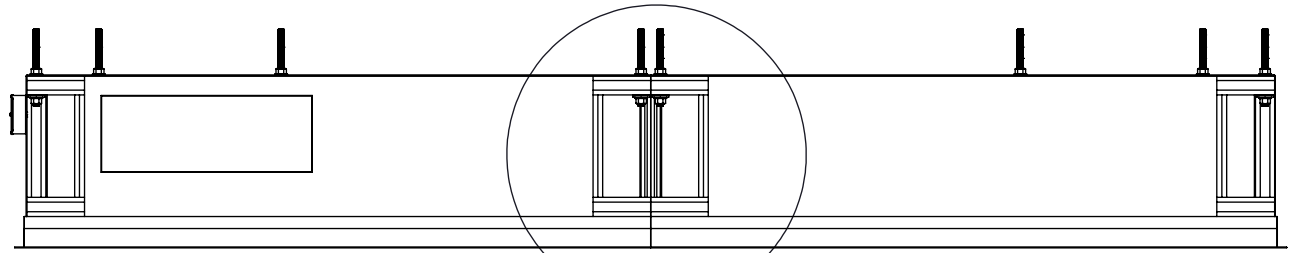
Revision Date: 9/17/2024

Form: SS0020

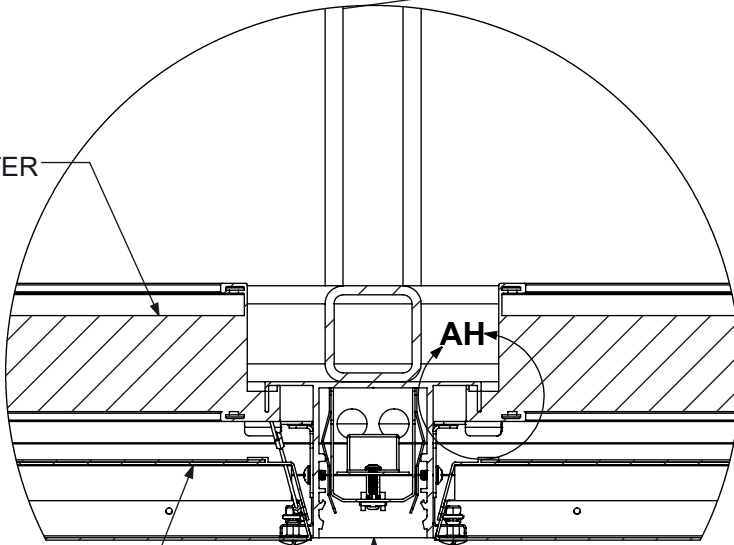
Replaces: NEW

SHEET 1 OF 5

Product Information is Subject to Change Without Notice



Optional
HEPA FILTER



FACE-OPERATED
SLIDE DAMPER

LED CHANNEL

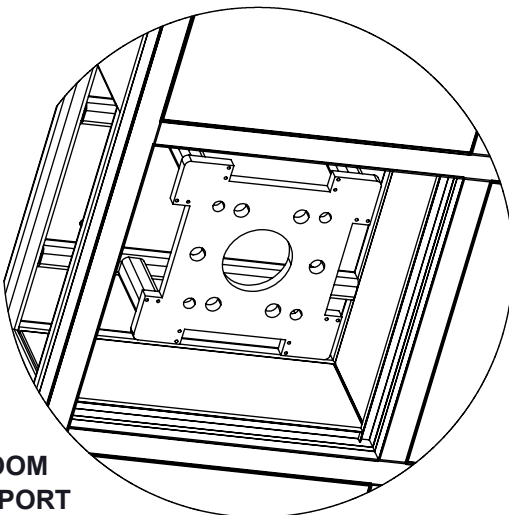
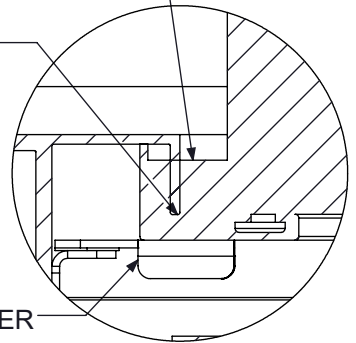
QUARTER TURNS

GEL SEAL

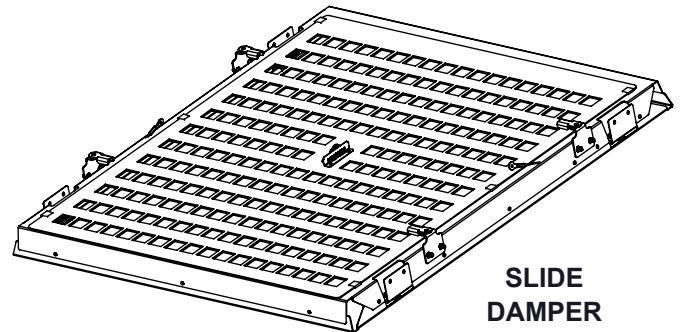
KNIFE EDGE

FILTER
RETAINER

**FILTER DETAIL
AH**



**BOOM
SUPPORT**



**SLIDE
DAMPER**

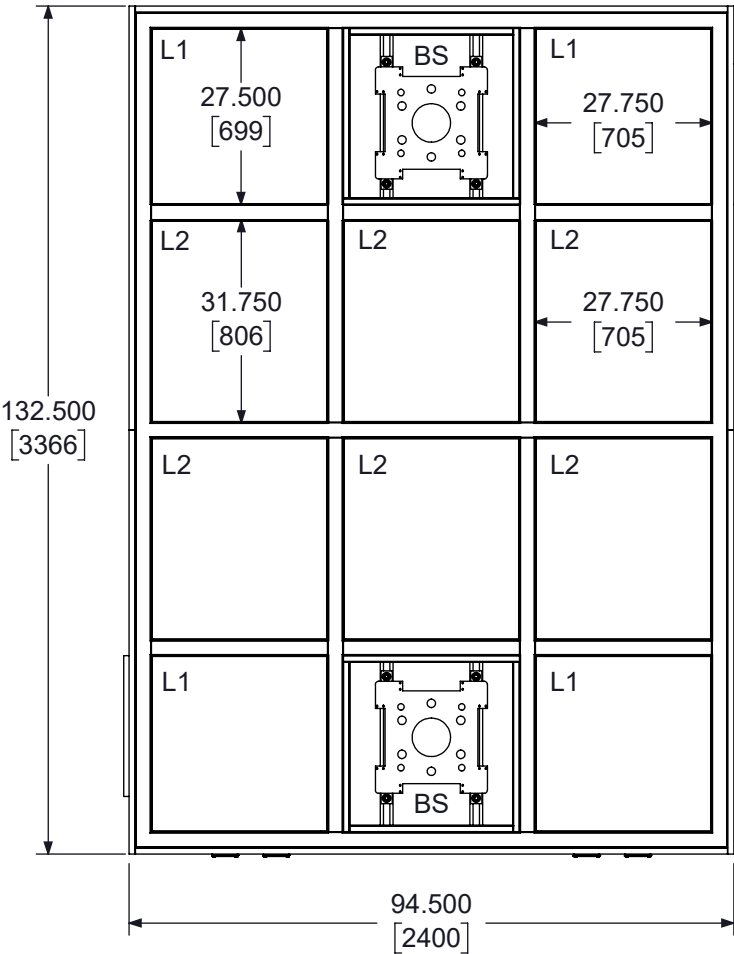


STERILSUITE-SD
OPERATING ROOM CEILING SYSTEM
STRUCTURAL

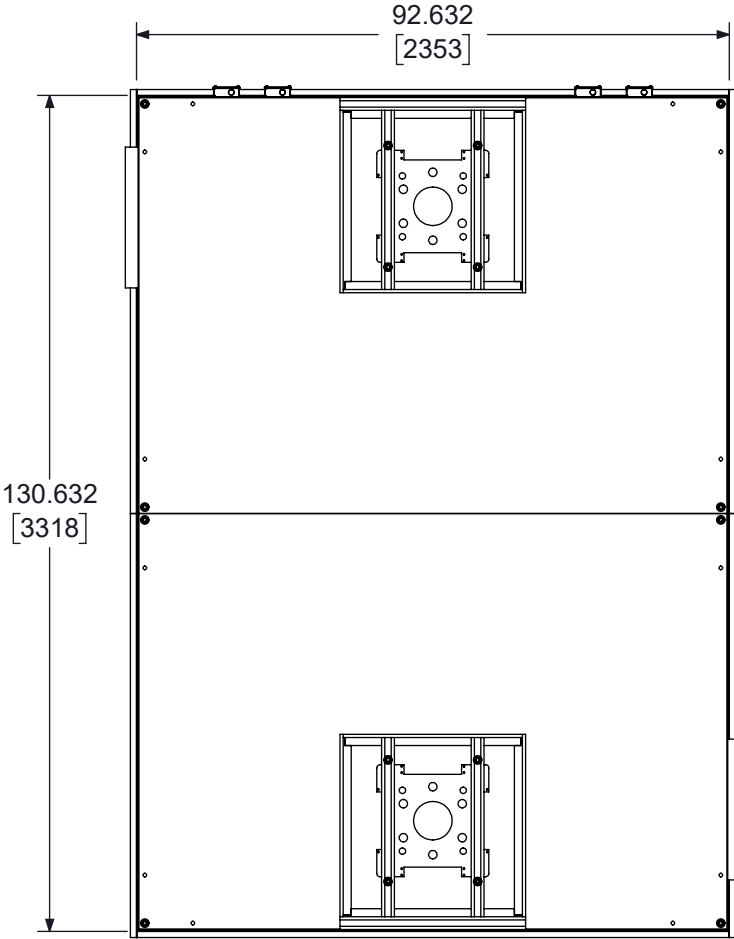
JOB NAME _____
ENGINEER _____
CONTRACTOR _____
TAG _____

SUBMITTAL SHEET

132.5" x 94.5"
Example System
Shown



FACE VIEW



PLENUM VIEW

TAG	TYPE	QUANTITY
BS	BOOM SUPPORT	2
L1	26x26 LAMINAR	4
L2	26x30 LAMINAR	6

DIMENSIONS GIVEN AS INCHES [MM]

132.5" x 94.5"
Example System
Shown

ASHRAE 170-2021 CRITERIA

Coverage of the primary supply diffuser array shall extend a minimum of 12" beyond the surgical table foot print on all sides.

>70% of this area shall be covered by unidirectional, non-aspirating supply diffusers

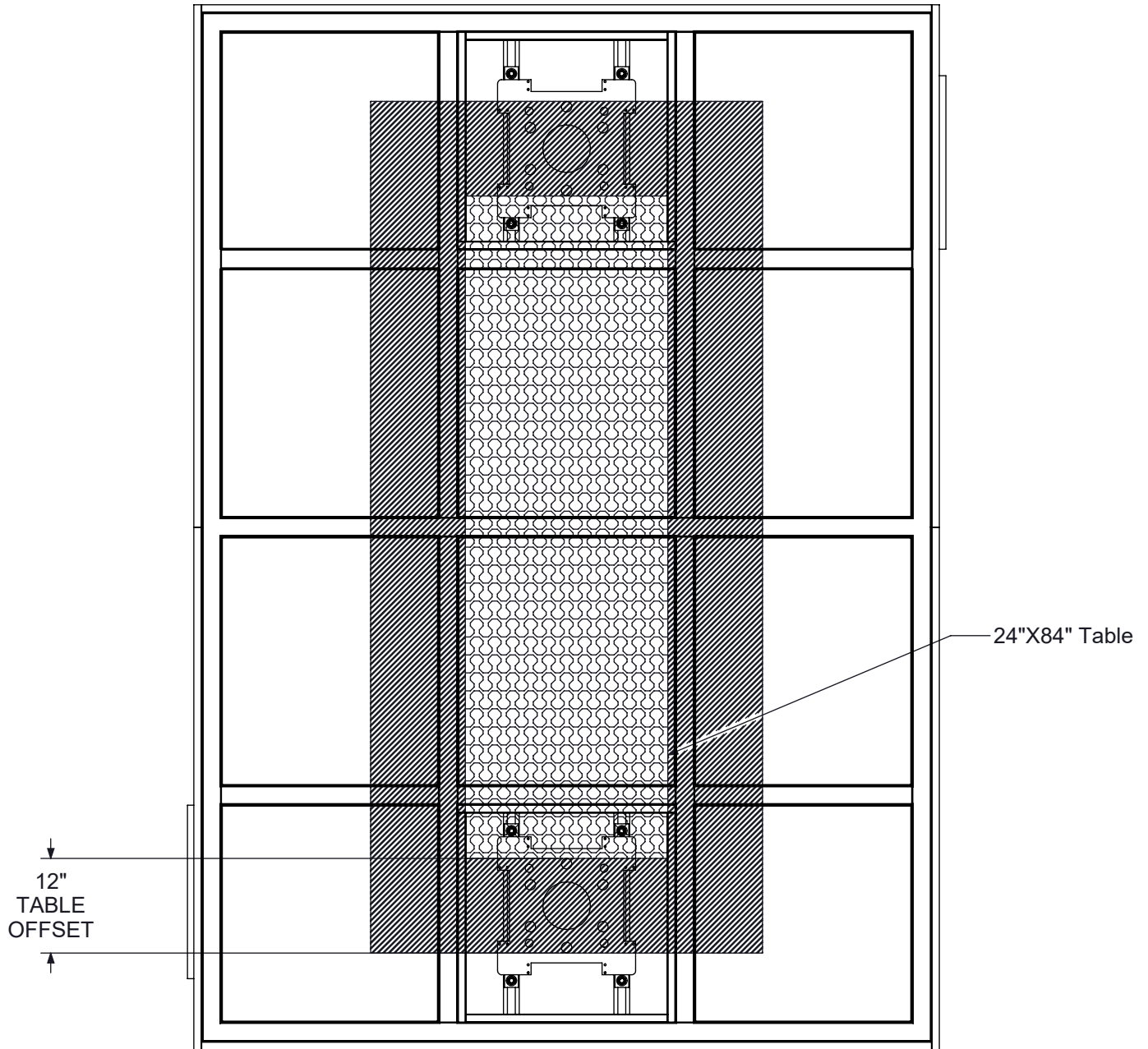


Table w/ Offset = 36 SQ FT (100%)
Supply Diffuser Coverage = 31 SQ FT (86%)

DIMENSIONS GIVEN AS INCHES [MM]

Revision Date: 9/17/2024

Form: SS0020

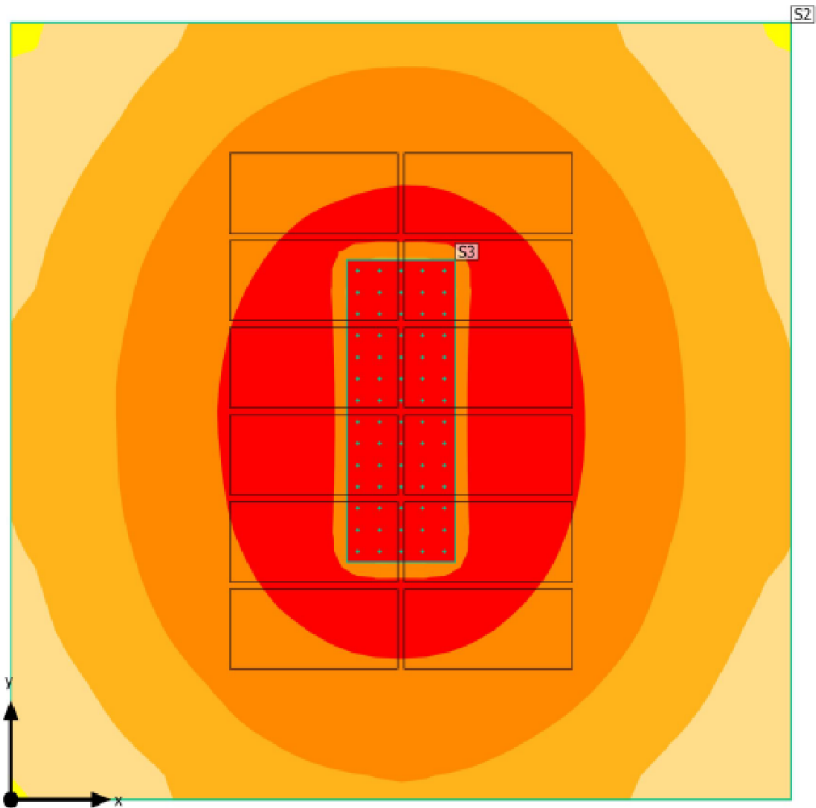
Replaces: NEW

SHEET 4 OF 5

Product Information is Subject to Change Without Notice

Example
Photometric
Analysis System
Shown

Building 1 · Storey 1 · Room 1 (Light scene 1)
Calculation objects



Calculation objects

Work planes

Properties	E (Target)	E _{min}	E _{max}	g ₁	g ₂	Index
Workplane (Room 1) Perpendicular Illuminance (adaptive) Height: 2.625 ft, Wall zone: 0.000 ft	199 fc (≈ 92.9 fc) ✓	0.00 fc	377 fc	0.00	0.00	S2

Calculation surfaces

Properties	E	E _{min}	E _{max}	g ₁	g ₂	Index
OR Table Perpendicular Illuminance Height: 2.625 ft	406 fc	364 fc	428 fc	0.90	0.85	S3