

STERILSUITE

OPERATING ROOM CEILING SYSTEM NON-STRUCTURAL

JOB NAME _____
ENGINEER _____
CONTRACTOR _____
TAG _____

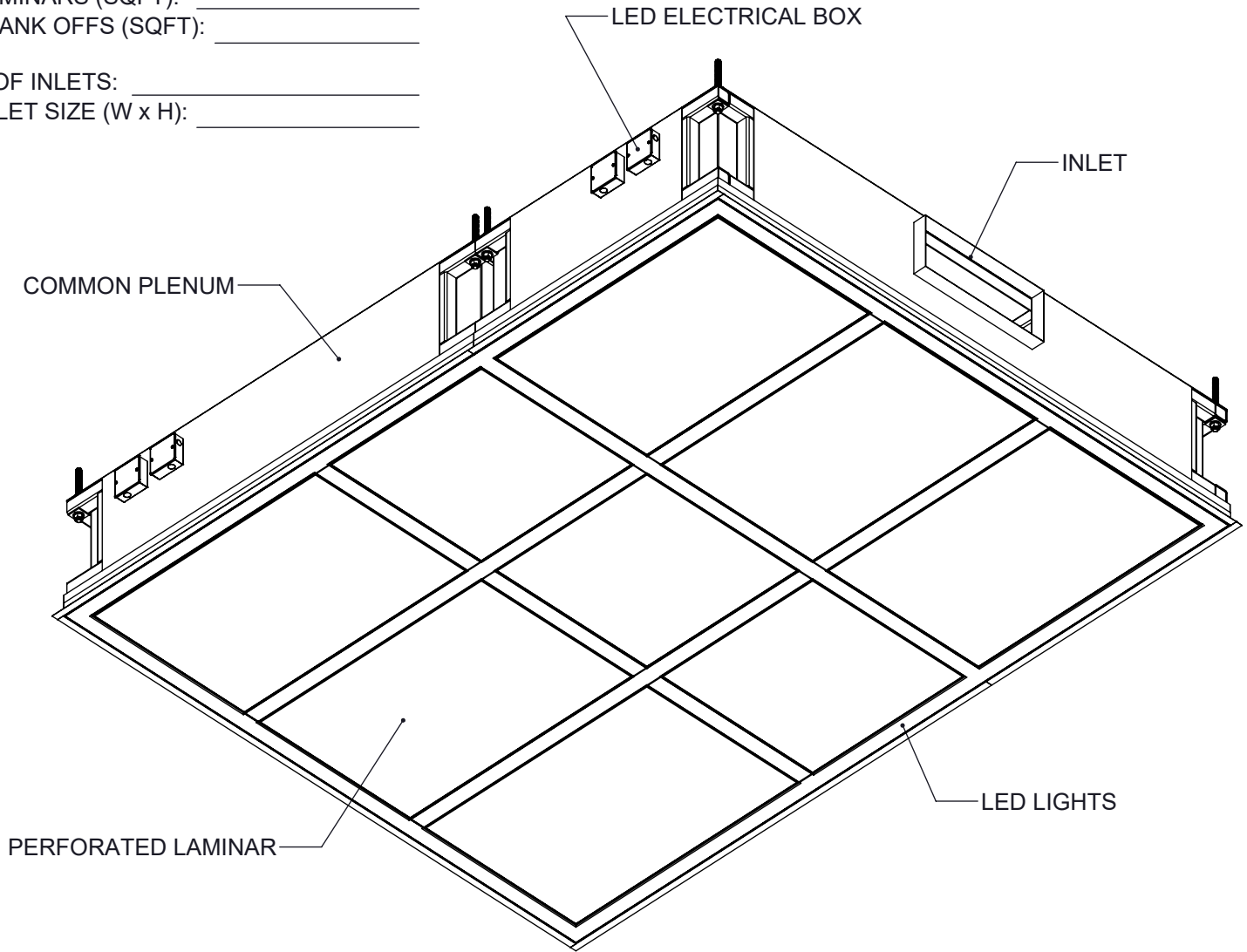
SUBMITTAL SHEET

LAMINARS (SQFT): _____

BLANK OFFS (SQFT): _____

OF INLETS: _____

INLET SIZE (W x H): _____



NOTES:

1. Customizable, modular ceiling system with common plenum design and integrated LED lighting
2. Steel plenum and structure
3. Gel Seal, Knife Edge Standard
4. Laminar flow arrangement to meet ASHRAE 170 OR design requirements
5. Low profile Common plenum allows ease of integration into new or existing building
6. Integrated White LED lighting, tunable and dimmable
7. Integral Full Face Slide Damper Face accessible through laminar face
8. Hanger tabs with All-Thread Holes and Threaded Rods
9. Blank offs and Access panels provided where needed

Laminar Construction

- ☐ Aluminum (Standard)
- ☐ 304 Stainless Steel
- ☐ 316 Stainless Steel

Optional Features

- ☐ HEPA Filter
- ☐ ULPA Filter
- ☐ 1.5" External Insulation
- ☐ Custom LED Colors

Finish

- ☐ Antimicrobial White
- ☐ Custom Colors

DIMENSIONS GIVEN AS INCHES [MM]

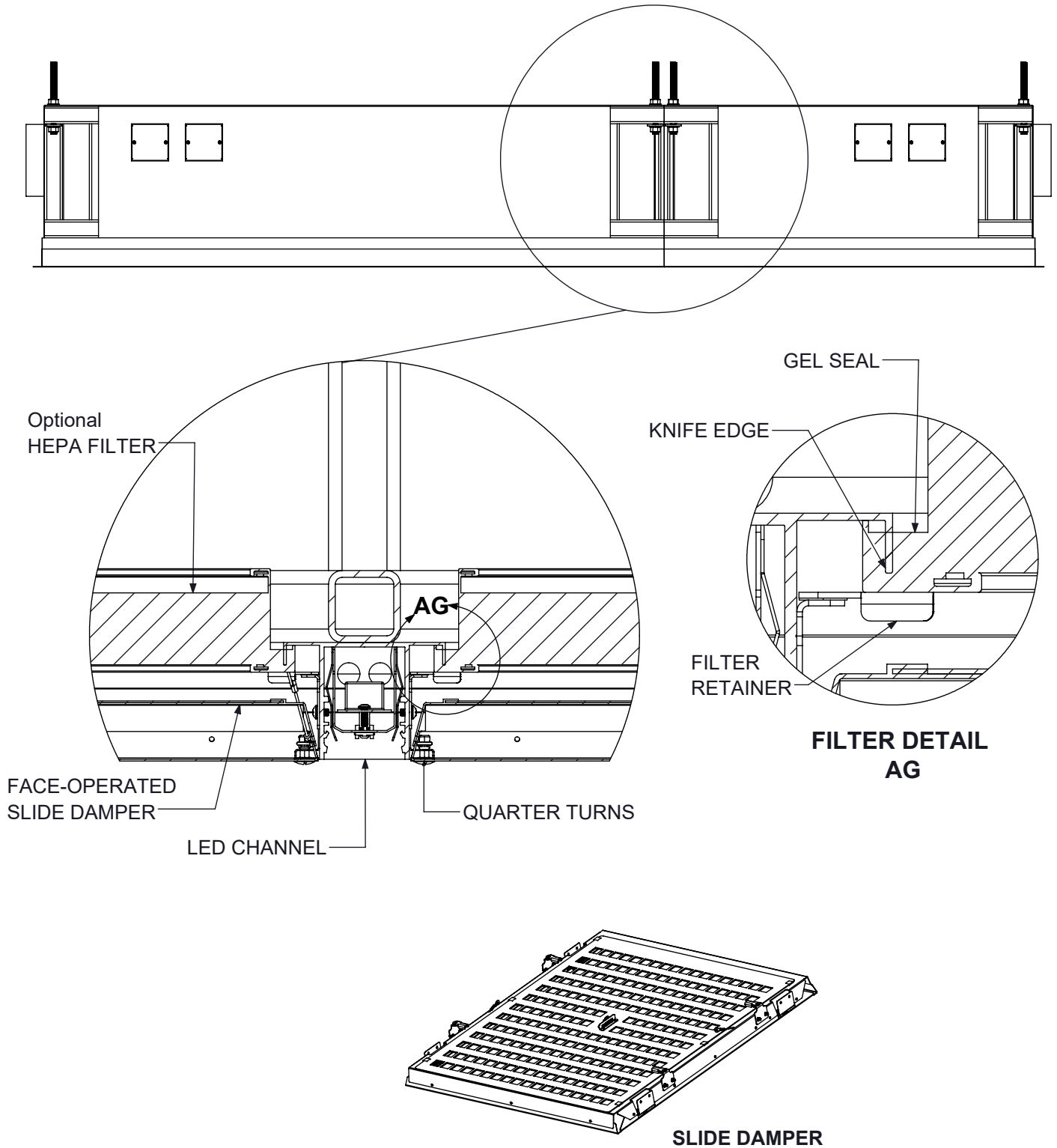
Revision Date: 8/20/2024

Form: SS0019

Replaces: NEW

SHEET 1 OF 5

Product Information is Subject to Change Without Notice



DIMENSIONS GIVEN AS INCHES [MM]

Revision Date: 8/20/2024

Form: SS0019

Replaces: NEW

SHEET 2 OF 5

Product Information is Subject to Change Without Notice



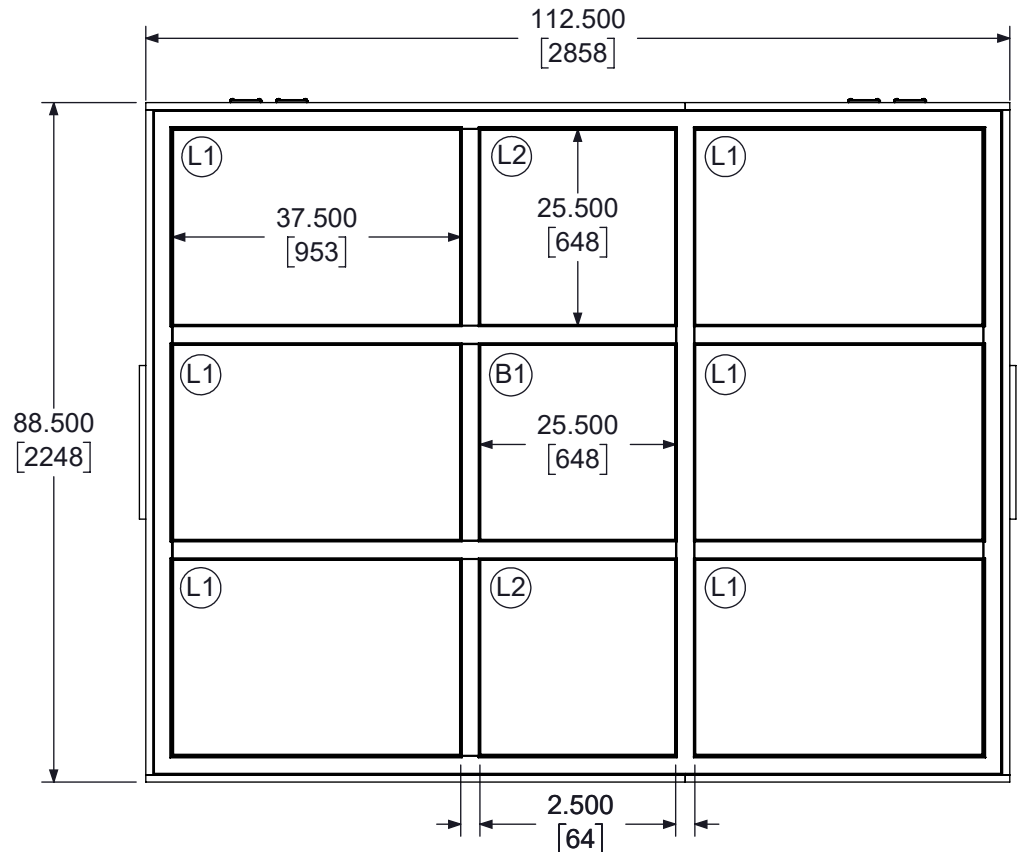
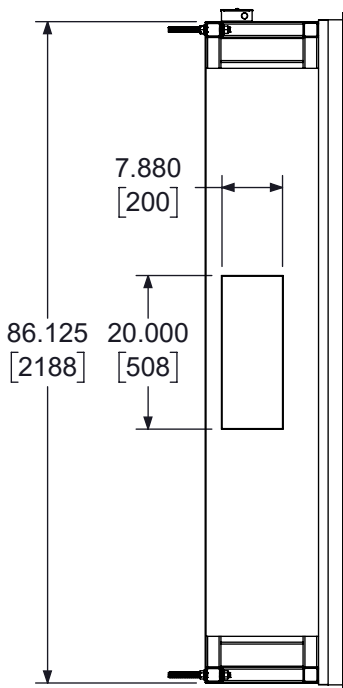
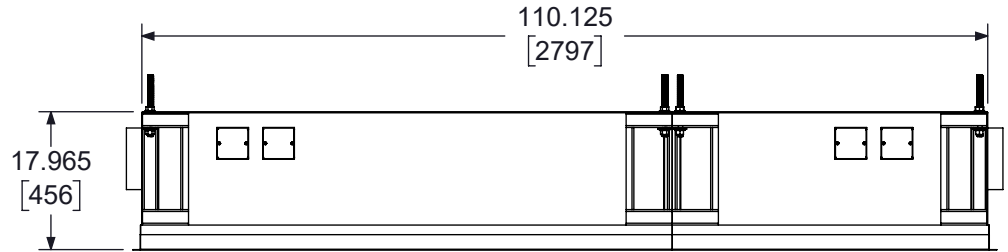
STERILSUITE

OPERATING ROOM CEILING SYSTEM
NON-STRUCTURAL

JOB NAME _____
ENGINEER _____
CONTRACTOR _____
TAG _____

SUBMITTAL SHEET

112.5" x 88.5"
Example System
Shown



FACE VIEW

TAG	Description	QTY
L1	36x24 Laminar	6
L2	24x24 Laminar	2
B1	24X24 Boom Panel	1

DIMENSIONS GIVEN AS INCHES [MM]

Revision Date: 8/20/2024

Form: SS0019

Replaces: NEW

SHEET 3 OF 5

Product Information is Subject to Change Without Notice



STERILSUITE

OPERATING ROOM CEILING SYSTEM
NON-STRUCTURAL

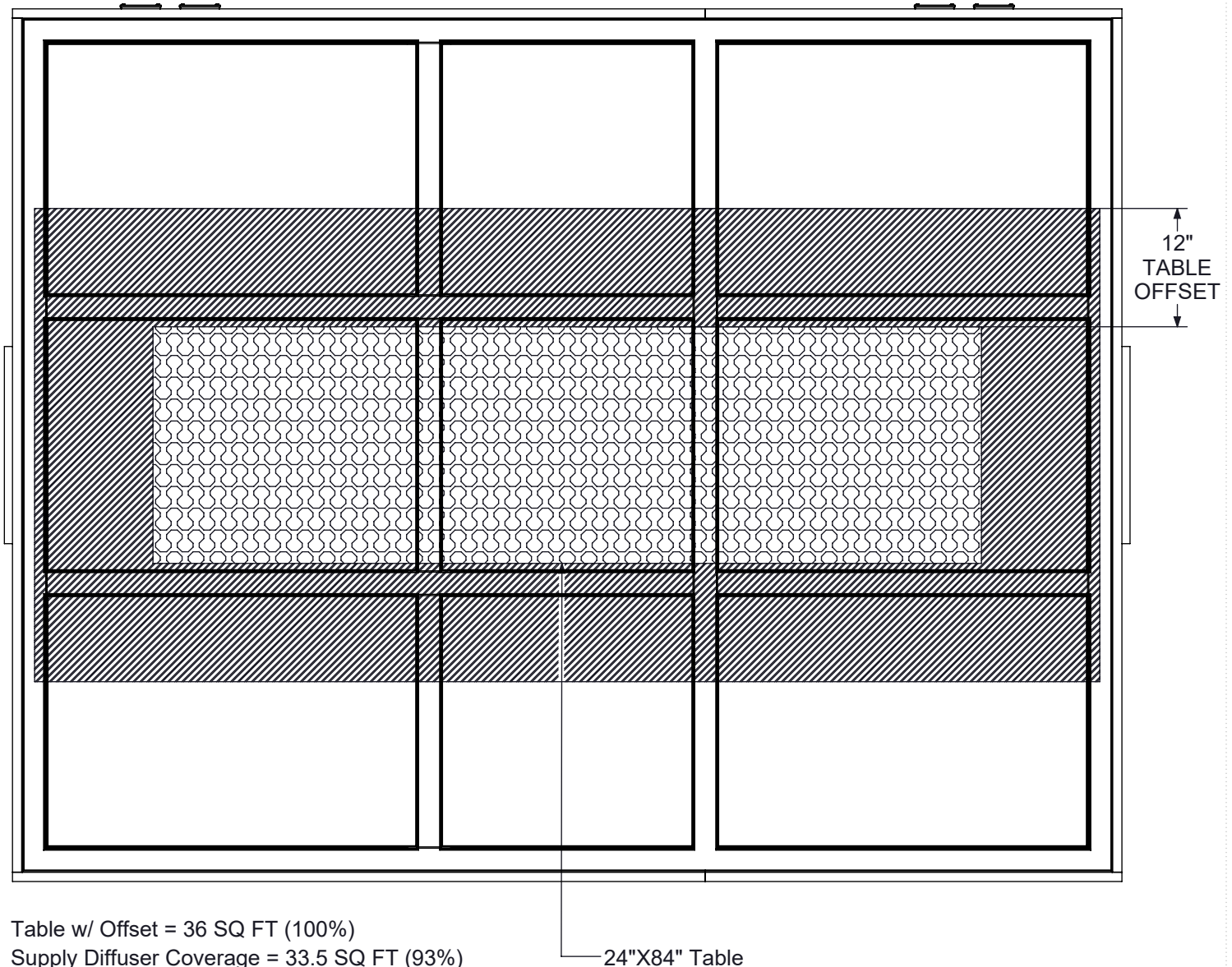
JOB NAME _____
ENGINEER _____
CONTRACTOR _____
TAG _____

SUBMITTAL SHEET

112.5" x 88.5"
Example System
Shown

ASHRAE 170-2021 CRITERIA

Coverage of the primary supply diffuser array shall extend a minimum of 12" beyond
the surgical table foot print on all sides.
>70% of this area shall be covered by unidirectional, non-aspirating supply diffusers



DIMENSIONS GIVEN AS INCHES [MM]

Revision Date: 8/20/2024

Form: SS0019

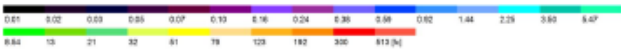
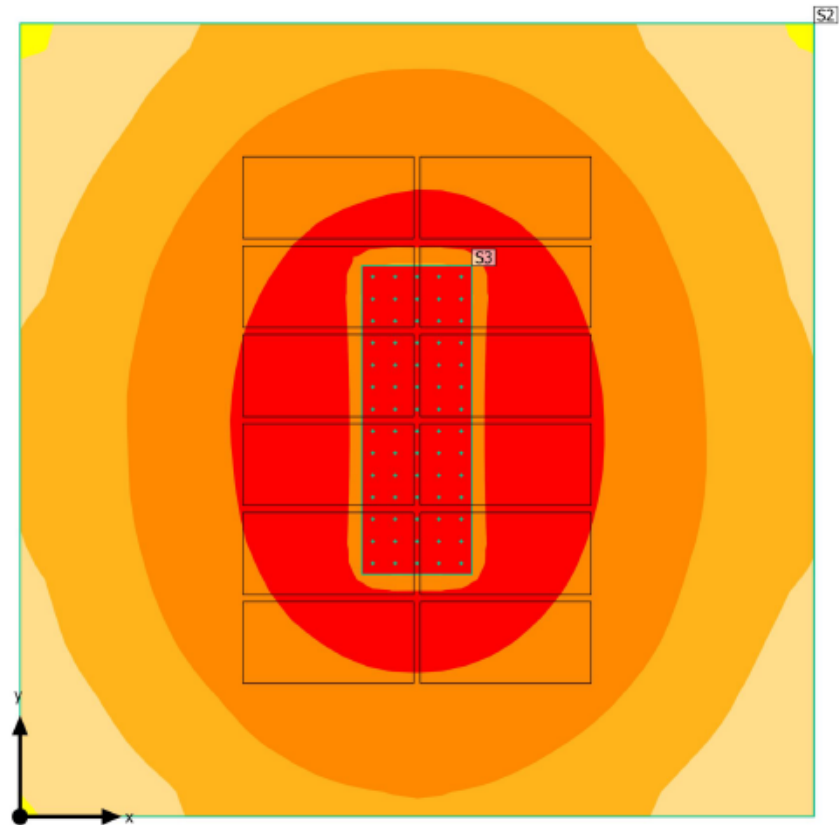
Replaces: NEW

SHEET 4 OF 5

Product Information is Subject to Change Without Notice

Example
Photometric
Analysis System
Shown

Building 1 - Storey 1 - Room 1 (Light scene 1)
Calculation objects



Work planes

Properties	E (Target)	E _{min}	E _{max}	g ₁	g ₂	Index
Workplane (Room 1) Perpendicular illuminance (adaptive) Height: 2.625 ft, Wall zone: 0.000 ft	199 fc (≥ 92.9 fc) ✓	0.00 fc	377 fc	0.00	0.00	S2

Calculation surfaces

Properties	E	E _{min}	E _{max}	g ₁	g ₂	Index
OR Table Perpendicular illuminance Height: 2.625 ft	406 fc	364 fc	428 fc	0.90	0.85	S3