

MODEL

- KBM - Modular blower coil / air handler

FEATURES

- Modular design facilitates retrofit
- Multiple fan discharge arrangements
- Galvanized steel cabinet construction, minimum 18 gauge
- 1" thick fiberglass or 1" thick foil face insulation
- Doublewall (solid or perforated) construction available
- Gasketed, removable access panel sized for easy handling
- Hinged access doors with quick action latches (optional)
- Multiple filter options including spare filters available
- IAQ galvanized steel drain pan (stainless steel IAQ available)
- Left and right hand arrangement
- 4" base rails with rigging slots factory assembled and installed (optional)
- Motor starter and VFD factory installed (optional)
- Discharge plenum (optional)
- Access sections (optional)

COOLING AND REHEAT COIL OPTIONS

- Chilled water - 3, 4, 6, or 8 rows
- Direct expansion (DX) - 3, 4, 6, or 8 rows
- Hot water - 1, 2, 3, or 4 rows
- Steam - 1 or 2 rows
- Electric heat - draw thru or blow thru

COILS

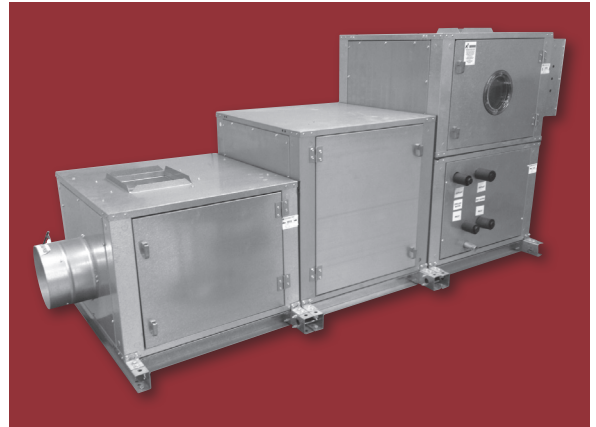
- 1/2" O.D. seamless copper tubes
- Manual air vent plug on all water coils
- 0.016" or 0.025" tube wall on water and evaporator coils
- 0.025" tube wall on steam coils
- 300 PSIG working pressure at 200°F, tested at 450 PSIG

FILTERS AND FILTER RACK

- Hinged side access flat filter rack
- 2" pleated filters (30%)
- 4" high efficiency pleated filters (65, 85, and 95%) (optional)
- Mixing box with filter sections (flat or v-bank filter arrangements) (optional)

FAN ASSEMBLY

- Single forward curved fan sections
- Statically and dynamically balanced
- Solid steel shafting
- Fan decks with internal vibration isolation.
- Ball bearings with a minimum design average life (L50) of 100,000 hours



FAN MOTOR AND DRIVE

- NEMA design ODP motors
- 1750 RPM single speed, 60 Hertz
- Single phase motors with inherent thermal protection
- 3-phase motors (optional)
- Standard cross section "V-belt" drive with 1.2 service factor
- Adjustable pitch motor pulley and fixed pitch blower pulley
- Direct drive plenum fans with internal rubber-in-shear (RIS) isolation
- TEFC motors
- High efficiency motors
- Variable frequency drives, factory installed (mounted and wired)
- Motor starter (contactor with overload for 3-phase; contactor for 1-phase), factory installed (mounted and wired)
- Return FC and plenum fan sections

OPTIONAL ELECTRICAL FEATURES

- Motor wiring in conduit
- Single or three phase fan control packages
- Door interlocking disconnect switch (non-fused or fused)
- Fusing (main or per stage)
- Hand off auto switch (HOA)
- Frequency inverters
- Electric heat interlock relay
- Relays, transformers, etc.

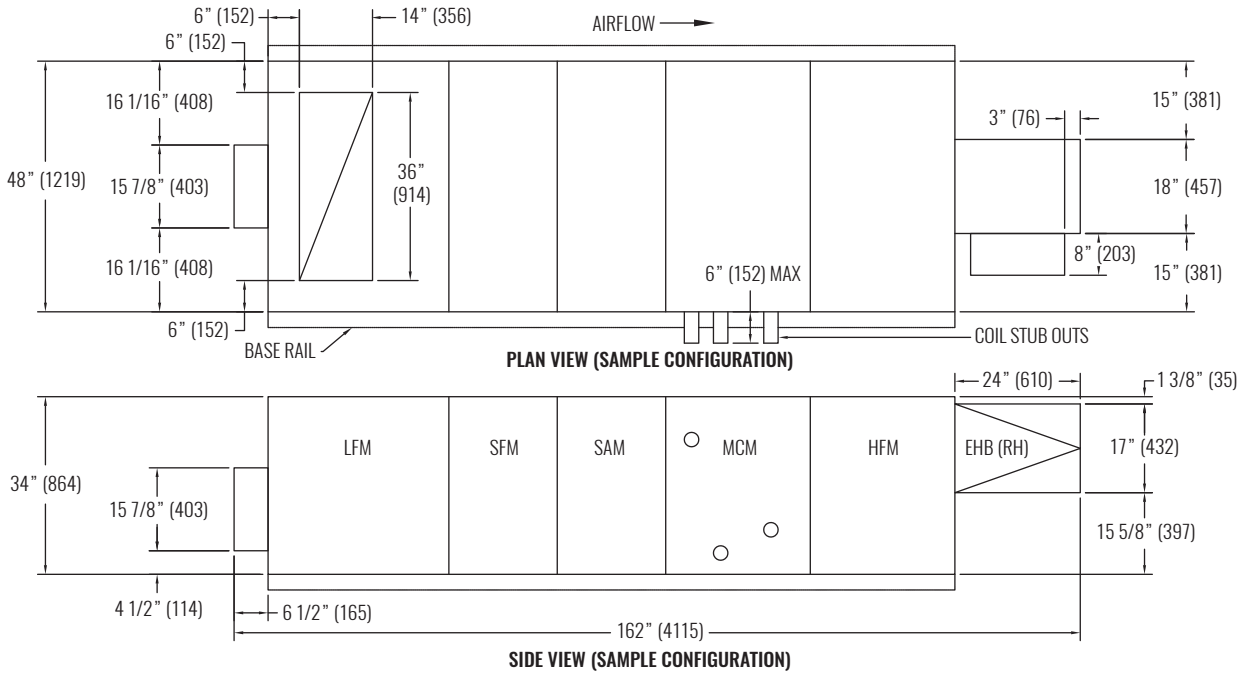
CERTIFICATIONS

- cETL Listed - Adherence to UL/ANSI Standard 1995
- AHRI 410 certified performance data

WEB SEARCH: KBM



DIMENSIONAL DATA AND PERFORMANCE



NOTE: Dimensions in parentheses are in millimeters (mm).

AVAILABLE MODULES	
ACRONYM	DESCRIPTION
EFM	EXTERNAL FLAT FILTERS (2")
SAM	SMALL ACCESS
SCM	SMALL COIL
SFM	SMALL FLAT FILTERS (2" AND/OR 4" CARTRIDGE)
MAM	MEDIUM ACCESS
MCM	MEDIUM COIL
MFM	MEDIUM SMARTRAC MIXING BOX WITH FLAT FILTERS (2")
MIM	MEDIUM SMARTRAC INLET PLENUM WITH FLAT FILTERS (2")
MMM	MEDIUM MIXING BOX WITH FLAT FILTERS (2")
MRM	MEDIUM INLET PLENUM WITH FLAT FILTERS (2")
MVM	MEDIUM V-BANK FILTERS (2")
HFM	HORIZONTAL FC FAN
HPM	HORIZONTAL PLUG FAN
VCM	VERTICAL COIL
VFM	VERTICAL FC FAN
LFM	LARGE SMARTRAC MIXING BOX WITH V-BANK FILTERS (2")
LIM	LARGE SMARTRAC INLET PLENUM WITH V-BANK FILTERS (2")
LMM	LARGE MIXING BOX WITH V-BANK FILTERS (2")
LRM	LARGE INLET PLENUM WITH V-BANK FILTERS (2")
LPM	LARGE DISCHARGE PLENUM
FCM	FC FAN AND COIL COMBINATION (HORIZONTAL ONLY)
EHB	ELECTRIC HEAT BLOW THRU

The modular design of the KBM air handler allows it to be custom built to for any application. A single unit can be comprised of different combinations of modules. Krueger's selection software makes it easy to build a unit and see its custom performance and dimensions. Shown above is a sample configuration of a size 8 unit with mixing box, small filter box, access module, coil section, and a horizontal fan section.

PERFORMANCE	
UNIT SIZE	CFM RANGE
2	650 - 1050
3	950 - 1550
4	1200 - 2000
6	1900 - 3100
8	2400 - 4000
10	3100 - 5100
12	3900 - 6900
14	4600 - 7800
17	5200 - 9200

© Copyright Krueger 2018