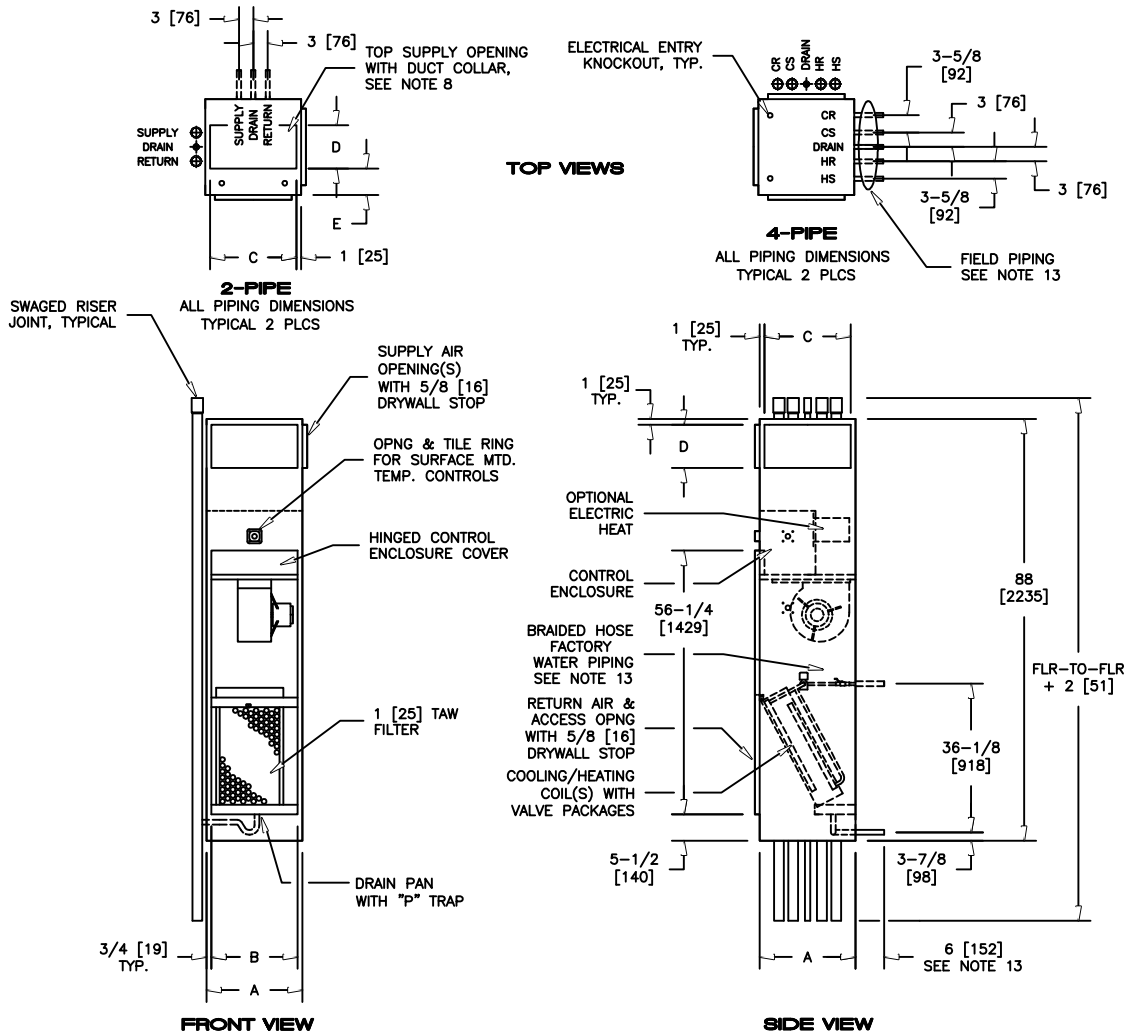


KVPP - VERTICAL STACK FAN COIL
 MODEL "KVPP" TWIN PACK UNIT WITH CROSS-OVER HIGH RISE FCU 88" CABINET

SUBMITTAL SHEET


UNIT SIZE	DIMENSIONS - IN [MM]				
	A	B	SINGLE/DOUBLE SUPPLY		E
			C	D	
03 & 04	18 [457]	16-1/2 [419]	16 [406]	8 [203]	6 [152]
06 & 08	20 [508]	18-1/2 [470]	18 [457]	12 [305]	6 [152]
10 & 12	24 [610]	22-1/2 [572]	22 [559]	14 [356]	8 [203]

- NOTES:**
- ALL DIMENSIONS ARE INCHES [MM]. METRIC VALUES ARE OFT CONVERSION.
 - ALL DIMENSIONS ARE ±1/4 [6MM].
 - TILE RING INSTALLED ON FRONT OF UNIT (SHOWN) MAY MOVE TO LEFT OR RIGHT SIDE OF UNIT IN FIELD.
 - TILE RING OMITTED ON UNITS WITH "ADA" CONTROL MOUNTING LOCATION.
 - WIRING ELECTRICAL ENTRY POINT TO CONTROL ENCLOSURE IS FURNISHED/INSTALLED BY OTHERS IN FIELD.
 - RISERS AVAILABLE FROM 3/4" [19MM] TO 3" [76MM] DIAMETER WITH 1/2" [13MM] THICK INSULATION
 - RISERS ALSO AVAILABLE 3/4" [19MM] TO 2-1/2" [64MM] DIAMETER WITH 3/4" [19MM] THICK INSULATIONS.
 - PIPING/INSULATION BETWEEN MASTER-SLAVE UNITS IS FURNISHED/INSTALLED IN THE FIELD BY OTHERS.
 - RISER LENGTH IS 120" [3048MM] MAX, 100" [2540MM] MIN.
 - SIDE RISER LOCATION SHOWN. SEE ARRANGEMENT DRAWINGS FOR AVAILABLE UNIT CONFIGURATIONS.
 - SLAVE UNIT STUBOUT DIMENSION IS APPROXIMATE AND VARIES WITH RISER DIAMETER.
 - STUBOUT EXTENDS APPROXIMATELY 4" FROM RISER TUBE.
 - WATER PIPING CONNECTIONS ARE 5/8" [16MM] O.D. AND DRAIN CONNECTION IS 7/8" [22MM] O.D.
 - FACTORY MOUNTED RISERS SHOW, RISERS MAY BE SHIPPED SEPARATELY.

Revision Date: 04/15	Form: FCS05-KVPP02	Replaces: NEW
----------------------	--------------------	---------------