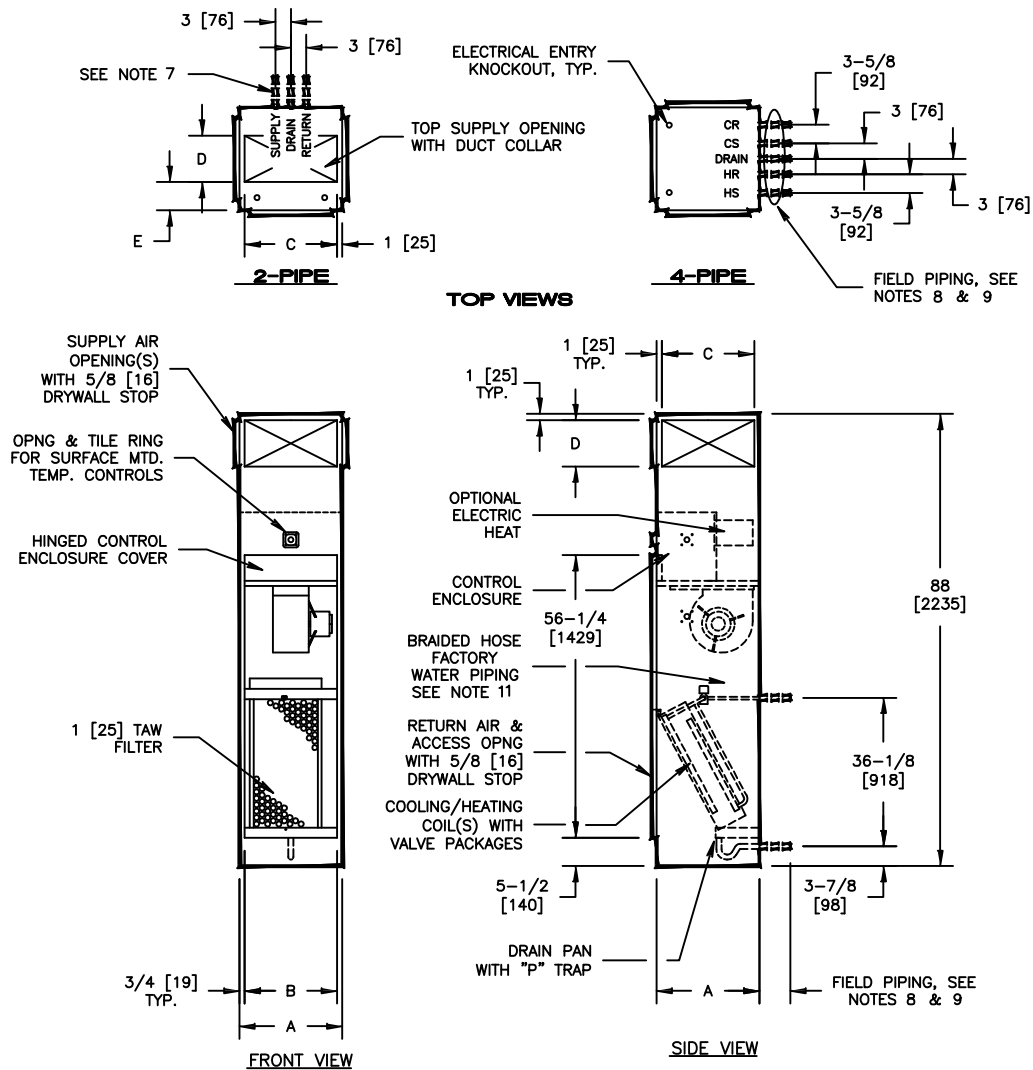


KVPH - VERTICAL STACK FAN COIL
 MODEL KVPH, SIZE: 03-12 VERTICAL CONCEALED HIGH RISE
 FCU 88" CABINET WITHOUT RISERS

SUBMITTAL SHEET


UNIT SIZE	DIMENSIONS - IN [MM]				E
	A	B	SINGLE/DOUBLE SUPPLY		
			C	D	
03 & 04	18 [457]	16-1/2 [419]	16 [406]	8 [203]	6 [152]
06 & 08	20 [508]	18-1/2 [470]	18 [457]	12 [305]	6 [152]
10 & 12	24 [610]	22-1/2 [572]	22 [559]	14 [356]	8 [203]

- NOTES:**
- ALL DIMENSIONS ARE INCHES [MM]. METRIC VALUES ARE SOFT CONVERSION
 - ALL DIMENSIONS ARE ±1/4 [6MM].
 - TILE RING IS INSTALLED ON FRONT OF UNIT (SHOWN), MAY BE MOVED LEFT OR RIGHT SIDE OF UNIT IN FIELD.
 - TILE RING OMITTED ON UNITS WITH "ADA" CONTROL MOUNTING LOCATION.
 - WIRING FROM ELECTRICAL ENTRY POINT TO CONTROL ENCLOSURE IS FURNISHED/INSTALLED IN THE FIELD BY OTHERS.
 - ALL PIPING AND INSULATION BETWEEN UNIT AND RISERS IS FURNISHED AND INSTALLED IN FIELD BY OTHERS.
 - BACK CONNECTION LOCATION SHOWN. SEE ARRANGEMENT DRAWINGS FOR AVAILABLE UNIT CONFIGURATIONS.
 - ALL COIL AND DRAIN CONNECTIONS ARE "RETRACTED" AND BRACED INTERNALLY FOR SHIPMENT.
 - COIL CONNECTIONS ARE 5/8" [6MM] O.D.
 - FEMALE SWEAT, DRAIN "P-TRAP" IS DESIGNED TO ACCEPT 7/8" [22M] O.D. COPPER TUBE.
 - UNITS WITHOUT RISERS ARE FURNISHED WITH FACTORY INSTALLED SHUTOFF VALVES AND FIELD CONNECTION TUBES.

Revision Date: 04/15	Form: FCS05-KVPH02	Replaces: NEW
----------------------	--------------------	---------------