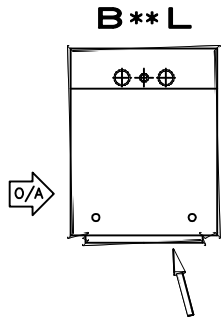
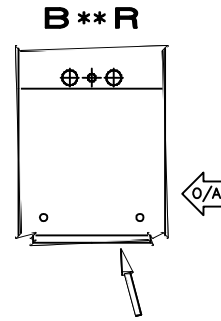


KVPH - VERTICAL STACK FAN COIL
 MODEL KVPH VERTICAL HIGH RISE FAN COIL UNIT OUTSIDE AIR INLET DESIGNATIONS

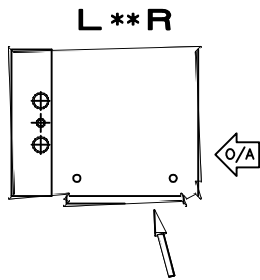
SUBMITTAL SHEET



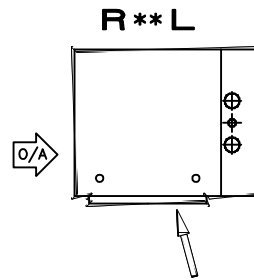
BACK RISER - LEFT O/A



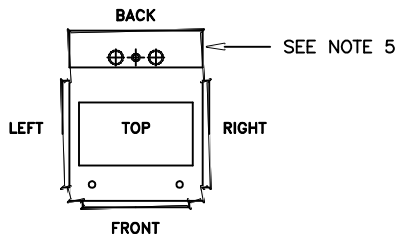
BACK RISER - RIGHT O/A



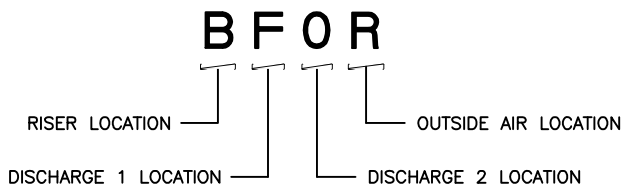
LEFT RISER - RIGHT O/A



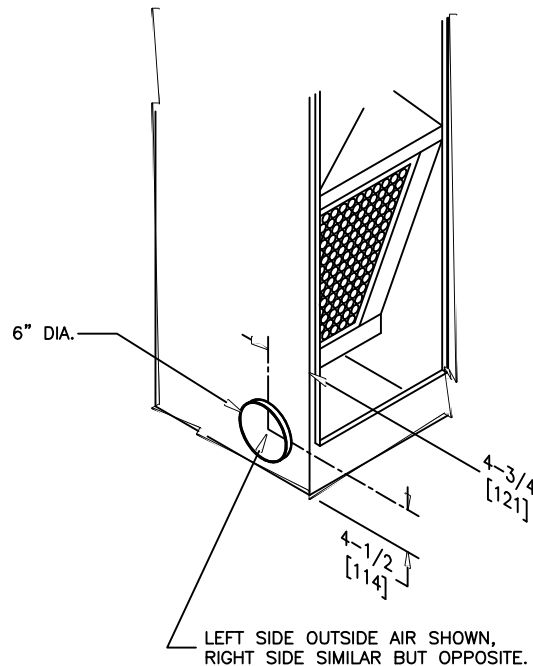
RIGHT RISER - LEFT O/A



F = FRONT L = LEFT
 T = TOP R = RIGHT
 B = BACK O = NONE



UNIT SIDE DESIGNATIONS



- NOTES:
1. RETURN AIR AND ACCESS ARE ALWAYS ON FRONT OF UNIT.
 2. THIS DRAWING SHOWS AVAILABLE RETURN AND OUTSIDE AIR INLET LOCATIONS.
 3. SEE ARRANGEMENT DRAWINGS FRO COMPLETE UNIT RISER, SUPPLY, AND RETURN CONFIGURATION DETAILS.
 4. OUTSIDE AIR INLET LOCATION IS ALWAYS LAST CHARACTER IN ARRANGEMENT CODE.
 5. KVPE UNIT WITH OPTIONAL RISER CHASE SHOW. OUTSIDE AIR LOCATION DESIGNATIONS ARE TYPICAL FOR ALL KV MODELS.

Revision Date: 04/15	Form: FCS05-KVPH08	Replaces: NEW
----------------------	--------------------	---------------