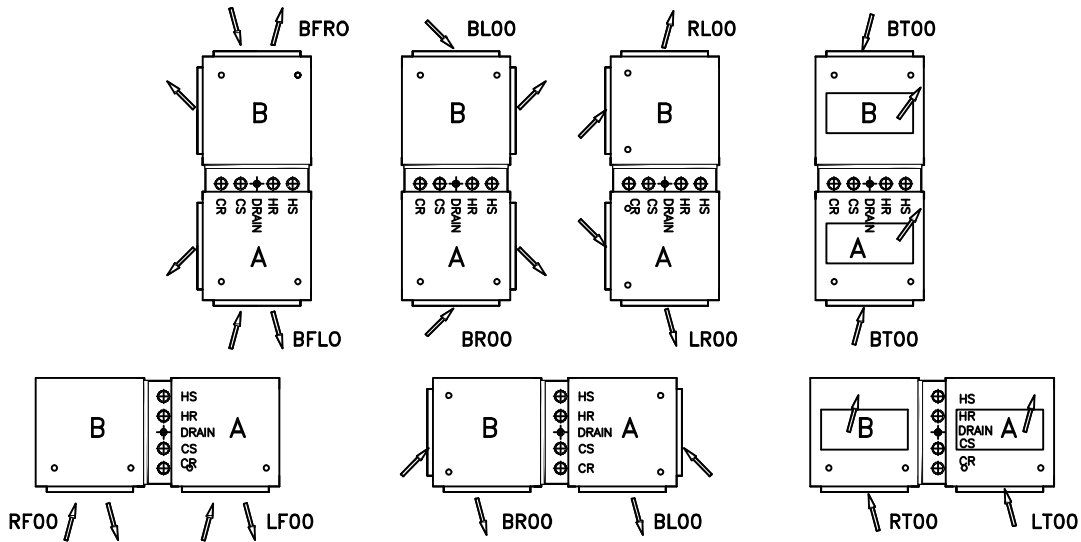
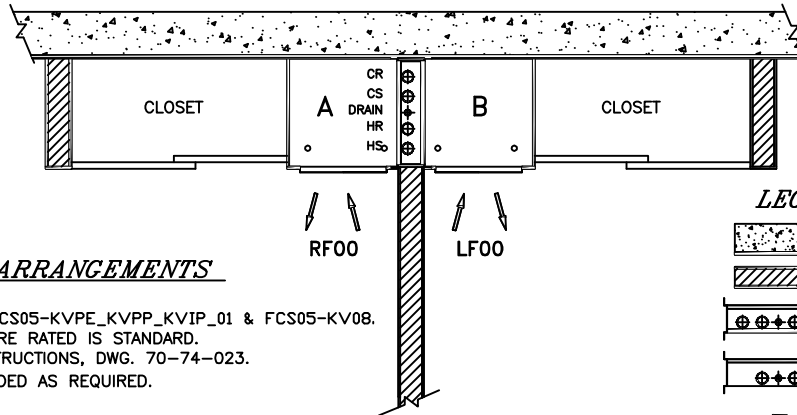
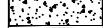
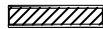





**KVPP/KVIP/KVPE - VERTICAL STACK FAN COIL**  
 MODEL KVPP/KVIP/KVPE TWIN PACK UNIT CONFIGURATION FAN COIL UNIT

**SUBMITTAL SHEET**


SHOWN ABOVE NON-FIRE RATED


**TYPICAL UNIT ARRANGEMENTS**
**LEGEND**

-  EXTERIOR WALL
-  INTERIOR WALL
-  TWIN PACK FIRE RATED
-  TWIN PACK NON-FIRE RATED
-  AIR FLOW
- A** MASTER UNIT
- B** SLAVE UNIT

**NOTE:**

1. FOR OTHER COMBINATIONS SEE FCS05-KVPE\_KVPP\_KVIP\_01 & FCS05-KV08.
2. FIRE RATED UNITS SHOWN NON-FIRE RATED IS STANDARD.
3. SEE TWIN PACK INSTALLATION INSTRUCTIONS, DWG. 70-74-023.
4. SIGHT AND SOUND Baffles PROVIDED AS REQUIRED.

