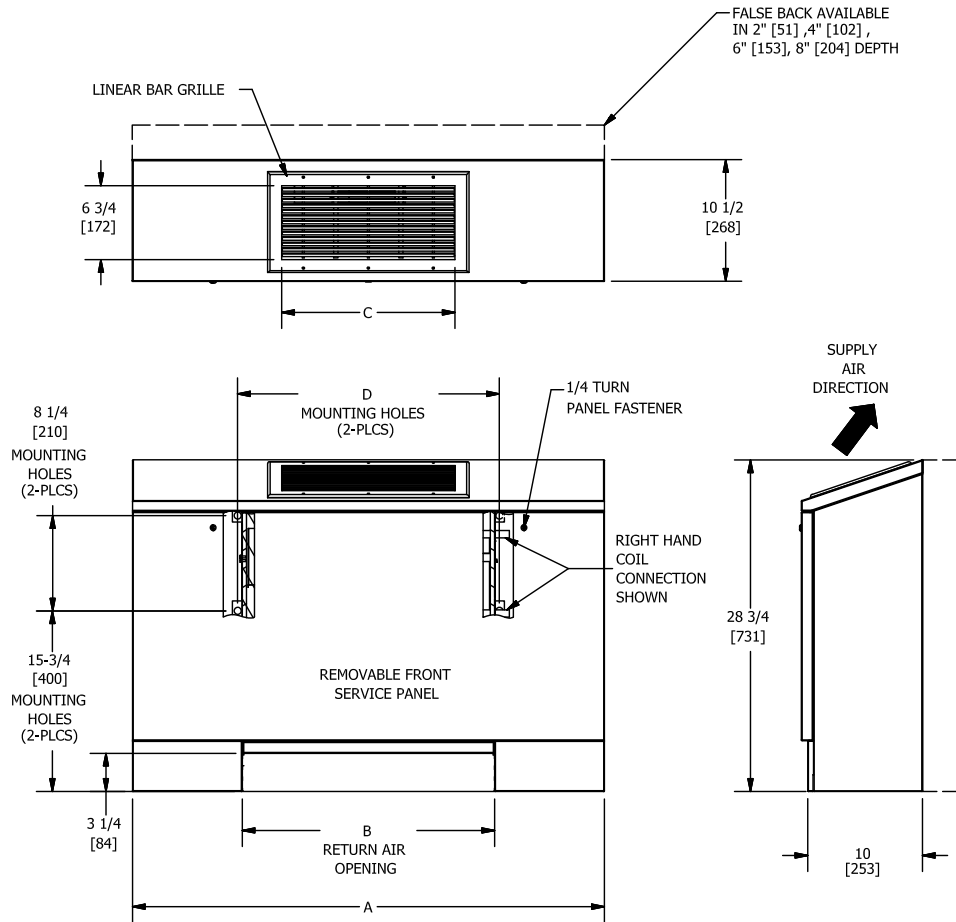


KVFS- VERTICAL FAN COIL
 VERTICAL FAN COIL, BAR GRILLE, FALSE BACK

SUBMITTAL SHEET



UNIT MODEL	A	B	C	D
2	50 [1270]	22 [559]	15-1/16 [383]	22-3/4 [578]
3	54 [1371]	26 [660]	19-1/16 [484]	26-3/4 [679]
4	60 [1524]	32 [813]	25-1/16 [637]	32-3/4 [832]
6	70 [1778]	42 [1067]	35-1/16 [891]	42-3/4 [1086]
8	72 [1829]	44 [1118]	37-1/16 [941]	44-3/4 [1137]
10	86 [2184]	58 [1473]	51-1/16 [1297]	58-3/4 [1492]
12	94 [2388]	66 [1676]	59-1/16 [1500]	66-3/4 [1695]

- NOTES:
1. ALL DIMENSIONS ARE INCHES [MILLIMETERS]. ALL DIMENSIONS ARE +/-1/4" [6MM]. METRIC VALUES ARE SOFT CONVERSION
 2. JUNCTION BOX SIZE AND LOCATION VARIES WITH UNIT FEATURES. CONTROL OPTIONS MAY BE LIMITED.
 3. PROVIDE SUFFICIENT CLEARANCE TO ACCESS ELECTRICAL CONTROLS AND COMPLY WITH APPLICABLE CODES AND ORDINANCES
 4. STANDARD CABINET FINISH IS "PEARL WHITE SATIN"
 5. RIGHT HAND UNIT SHOWN, LEFT HAND UNIT SIMILAR BUT OPPOSITE
 6. FALSE BACKS SHIP LOOSE FOR FIELD INSTALLATION
 7. SOME CONTROL OR PIPING PACKAGE OPTIONS MAY REQUIRE EXTENDED END POCKETS AND/OR EXTENDED DRAIN PANS