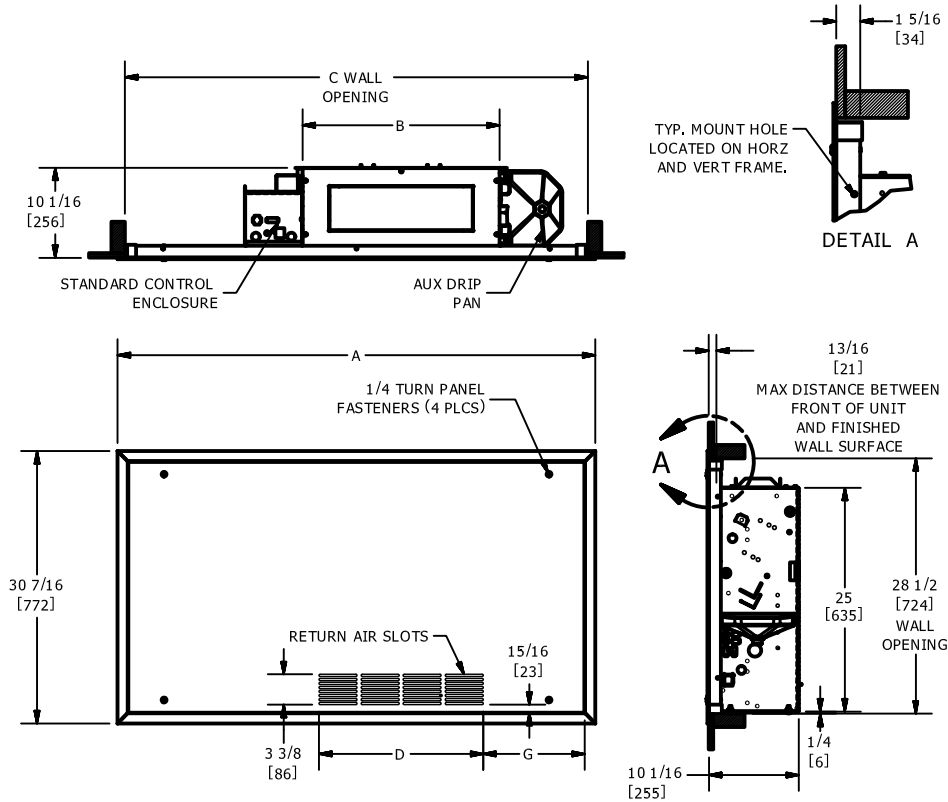


KVFH - VERTICAL FAN COIL
 RECESSED WALL EXTENDED PANEL, FRONT RETURN

SUBMITTAL SHEET



DIMENSIONS					
SIZE	A	B	C	D	G
2	53-7/16 [1357]	22 [559]	51-11/16 [1313]	18-3/8 [467]	11-5/16 [288]
3	57-1/16 [1459]	26 [660]	55-11/16 [1414]	23-1/16 [586]	11 [279]
4	63-7/16 [1611]	32 [813]	61-11/16 [1567]	27-3/4 [705]	11-10/16 [295]
6	73-7/16 [1865]	42 [1067]	71-11/16 [1821]	37-1/8 [943]	11-15/16 [303]
8	75-7/16 [1916]	44 [1118]	73-11/16 [1872]	41-7/8 [1064]	10-9/16 [269]
10	89-7/16 [2272]	58 [1473]	87-11/16 [2227]	55-15/16 [1421]	10-9/16 [269]
12	97-7/16 [2475]	66 [1676]	95-11/16 [2430]	60-5/8 [1540]	12-3/16 [309]

- NOTES:
- ALL DIMENSIONS ARE IN INCHES [MM]. ALL DIMENSIONS ARE ±1/4" [6MM]. METRIC VALUES ARE SOFT CONVERSIONS
 - WALL PANEL PROVIDES AIR SEAL AT FRONT OF UNIT. INSTALLED LOCATION IS CRITICAL TO PROPER UNIT OPERATION
 - INSTALL UNIT CENTERED IN WALL OPENING DIMENSIONS SHOWN
 - UNIT MAY REQUIRE RAISED SUPPORT TO ACHIEVE PROPER VERTICAL ALIGNMENT WITH WALL PANEL
 - RIGHT HAND COIL CONNECTION SHOWN. LEFT HAND UNIT SIMILAR BUT OPPOSITE
 - MOUNTING HARDWARE FURNISHED BY OTHERS

Revision Date: 04/15	Form: FCS03-KVFH06	Replaces: NEW
----------------------	--------------------	---------------