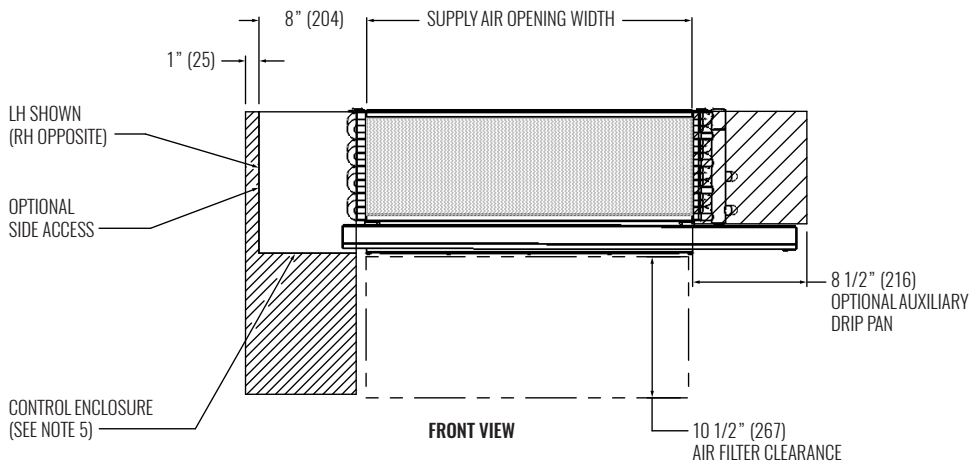
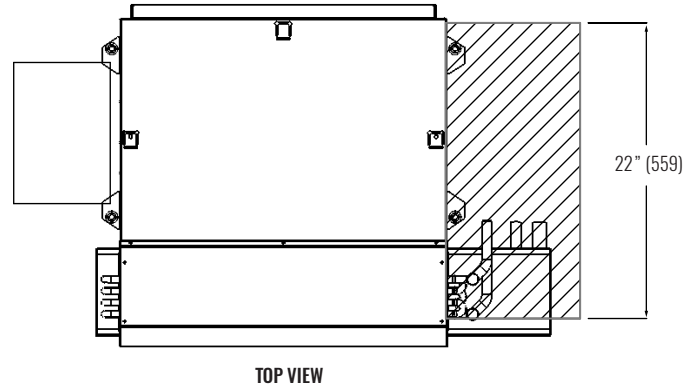


# KHF - SERIES A

Horizontal Fan Coil Units | Low Profile

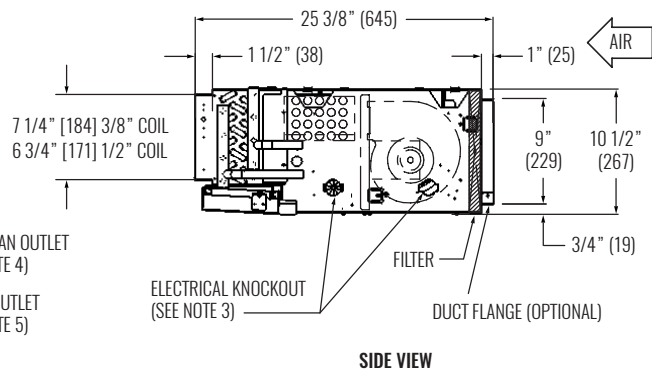
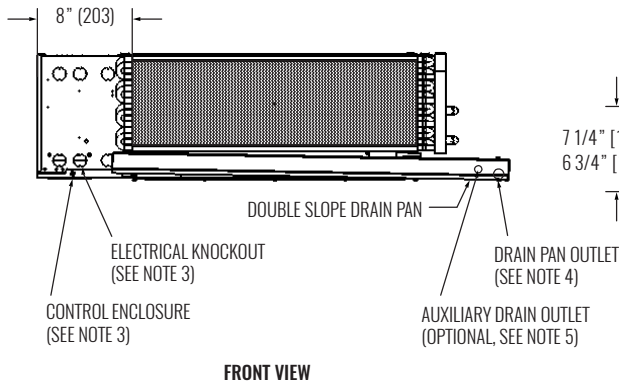
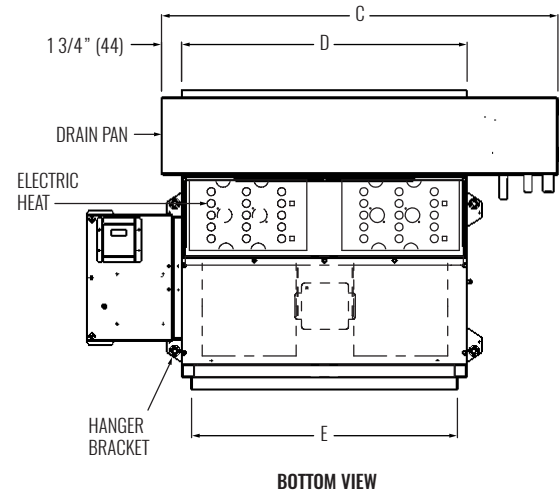
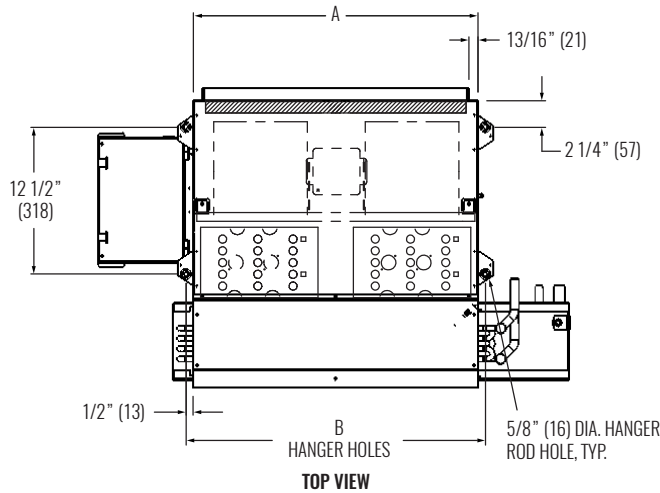


## DIMENSIONAL DATA | KHFP | EXTERNAL SPACE REQUIREMENTS



NOTES: All chilled water piping that projects beyond the condensate pan or the optional auxiliary drip pan must be field insulated by others. Auxiliary drip pan shown above is optional, and is mounted on the outlet side of the drain pan. Drain pan is installed with the outlet tube(s) on cooling coil connection end of coil on 4-pipe units with optional opposite end connection. Dimensions shown on this drawing apply to standard CW and HW valve packages. Refer to the Piping Package Catalog for valve package code details. Contact factory for details on valve packages using non-standard or customer furnished components. Provide sufficient clearance to access electrical components and comply with all applicable codes and ordinances.

**DIMENSIONAL DATA | KHFP | COOLING AND ELECTRIC HEAT**



UNIT SIZE	A	B	C	D	E
02	16" (406)	17 1/4" (438)	25 1/2" (648)	16" (406)	14 3/8" (365)
03	19 1/4" (489)	20 1/2" (521)	28 3/4" (730)	19 1/4" (489)	17 5/8" (448)
04	24 1/4" (616)	25 1/2" (648)	33 3/4" (857)	24 1/4" (616)	22 5/8" (575)
06	31" (787)	32 1/4" (819)	40 1/2" (1029)	31" (787)	29 3/8" (746)
08	38" (965)	39 1/4" (997)	47 1/2" (1206)	38" (965)	36 3/8" (924)
09	42 1/4" (1073)	43 1/2" (1105)	51 3/4" (1314)	42 1/4" (1073)	40 5/8" (1032)
10	52" (1321)	53 1/4" (1353)	61 1/2" (1562)	52" (1321)	50 3/8" (1280)
12	60" (1524)	61 1/4" (1556)	69 1/2" (1765)	60" (1524)	58 3/8" (1483)

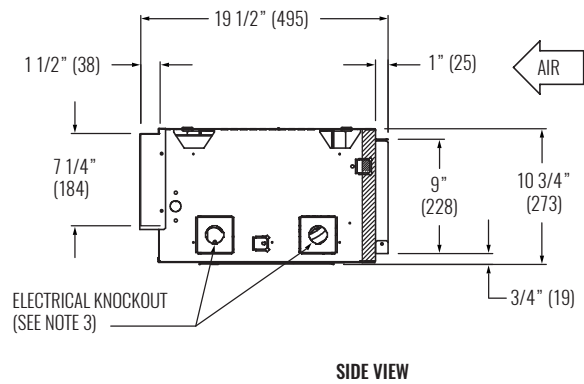
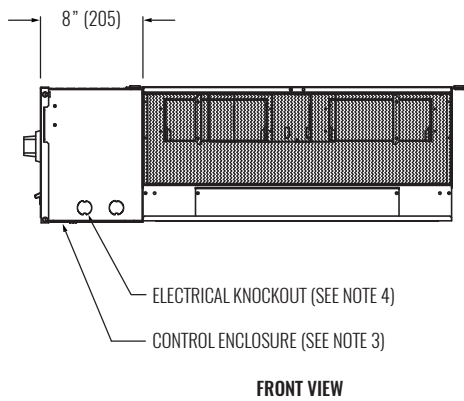
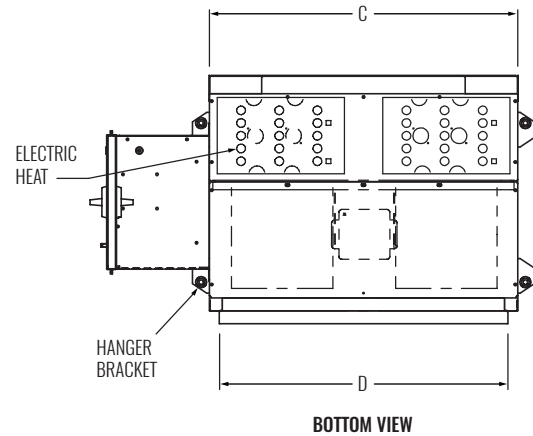
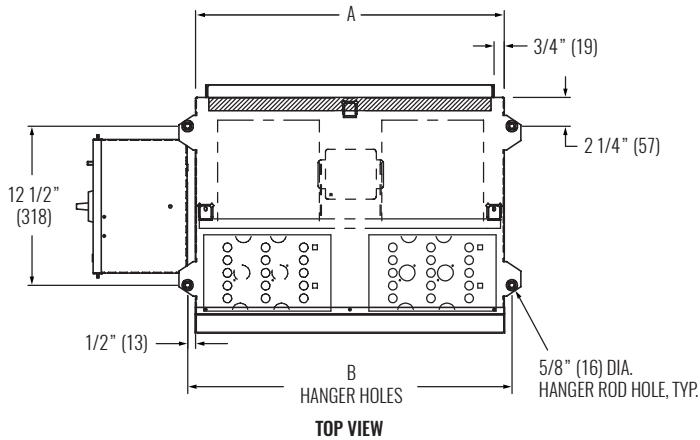
NOTES: All dimensions in Inches (millimeters). All dimensions  $\pm 1/4"$  (6mm). Metric values are soft conversion. Left-hand unit shown, right-hand unit opposite. Standard control enclosure is mounted on unit side opposite cooling coil connections. Unit casing includes (6) knockouts on each side. Provide sufficient clearance to access electrical controls and comply with applicable codes and ordinances. Standard externally foam coated galvanized steel drain pan has 7/8" ODM copper outlet. Stainless steel drain pan has 3/4" MPT galvanized steel outlet. Standard galvanized steel auxiliary drain pan has 5/8" ODM copper outlet. Stainless steel auxiliary drain pan has 3/8" MPT galvanized steel outlet. See coil connection drawings for coil connection sizes and locations.

# KHF - SERIES A

Horizontal Fan Coil Units | Low Profile



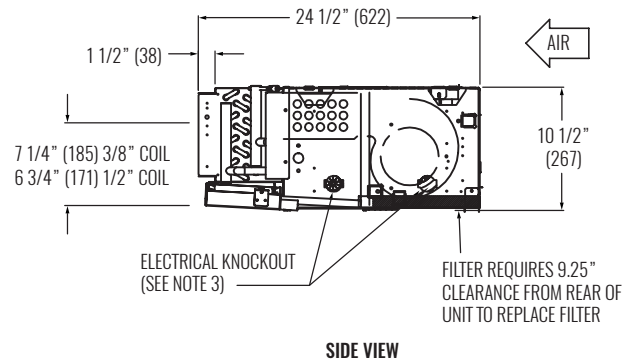
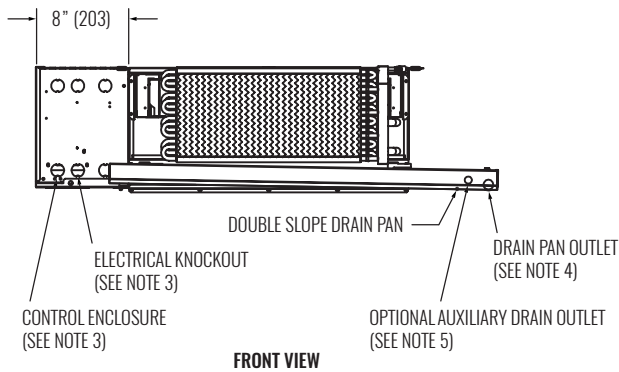
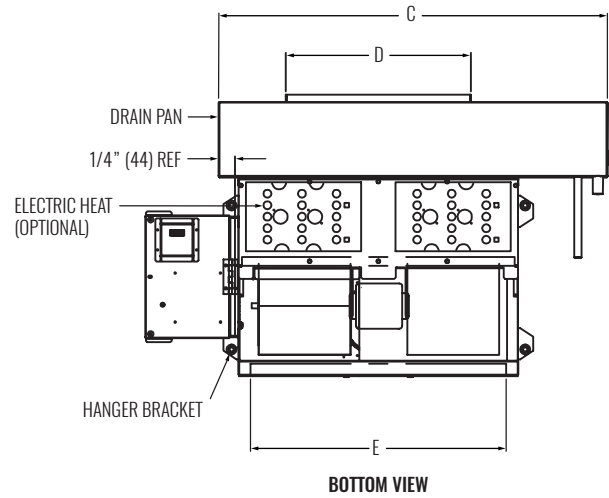
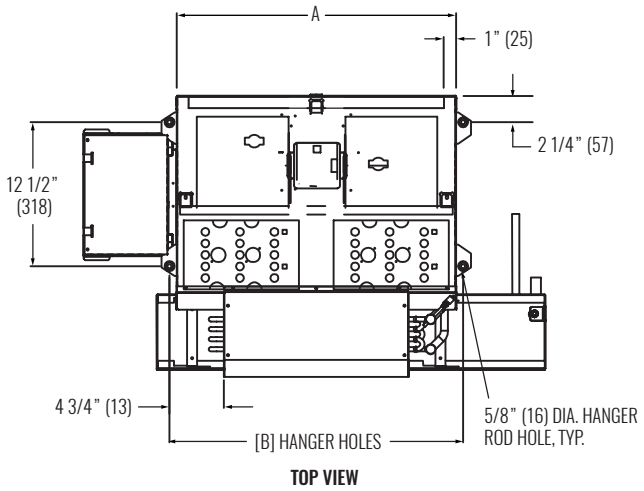
## DIMENSIONAL DATA | KHFP | ELECTRIC HEAT ONLY



UNIT SIZE	A	B	C	D
02	16" (406)	17 1/4" (438)	16" (406)	13 3/16" (335)
03	19 1/4" (489)	20 1/2" (521)	19 1/4" (489)	16 7/16" (418)
04	24 1/4" (616)	25 7/16" (646)	24 1/4" (616)	22 11/16" (576)
06	31" (787)	32 1/4" (819)	31" (787)	29 7/16" (748)
08	38" (965)	39 1/4" (997)	38" (965)	36 7/16" (925)
09	42 1/4" (1073)	43 5/16" (1100)	42 1/4" (1073)	40 1/2" (1029)
10	52" (1321)	53 1/4" (1353)	52" (1321)	50 7/16" (1281)
12	60" (1524)	60 1/4" (1530)	60" (1524)	57 1/2" (1461)

NOTES: All dimensions in Inches (millimeters). All dimensions  $\pm 1/4"$  (6mm). Metric values are soft conversion. Left-hand unit shown, right-hand unit opposite. Standard control enclosure is mounted on unit side opposite cooling coil connections. Unit casing includes (2) knockouts on each side. Provide sufficient clearance to access electrical controls and comply with applicable codes and ordinances.

**DIMENSIONAL DATA | KHFP | BOTTOM RETURN**



UNIT SIZE	A	B	C	D	E
02	16" (406)	17 1/4" (438)	25 1/4" (641)	16" (406)	13 3/16" (335)
03	19 1/4" (489)	20 1/2" (521)	28 1/2" (724)	19 1/4" (489)	16 7/16" (418)
04	24 1/4" (616)	25 1/2" (648)	33 1/2" (851)	24 1/4" (616)	22 11/16" (576)
06	31" (787)	32 1/4" (819)	40 1/4" (1022)	31" (787)	29 7/16" (748)
08	38" (965)	39 1/4" (997)	47 1/4" (1200)	38" (965)	36 7/16" (925)
09	42 1/4" (1073)	43 1/2" (1105)	51 1/2" (1308)	42 1/4" (1073)	40 1/2" (1029)
10	52" (1321)	53 1/4" (1353)	61 1/4" (1556)	52" (1321)	50 7/16" (1281)
12	60" (1524)	60 1/4" (1530)	69 1/4" (1759)	60" (1524)	57 1/2" (1461)

NOTES: All dimensions in Inches (millimeters). All dimensions  $\pm 1/4"$  (6mm). Metric values are soft conversion. Left-hand unit shown, right-hand unit opposite. Standard control enclosure is mounted on unit side opposite cooling coil connections. Unit casing includes (6) knockouts on each side. Provide sufficient clearance to access electrical controls and comply with applicable codes and ordinances. Standard externally foam coated galvanized steel drain pan has 7/8" ODM copper outlet. Stainless steel drain pan has 3/4" MPT galvanized steel outlet. Auxiliary drain outlet is 5/8" ODM copper or 3/8" MPT galvanized steel respectively. See coil connection drawings for coil connection sizes and locations.

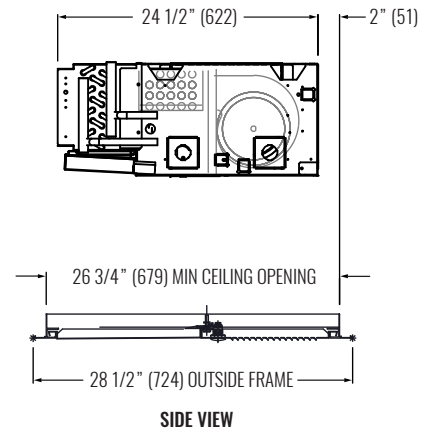
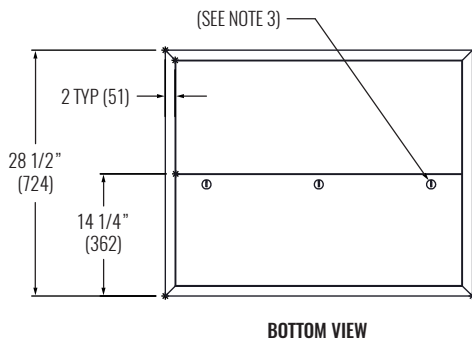
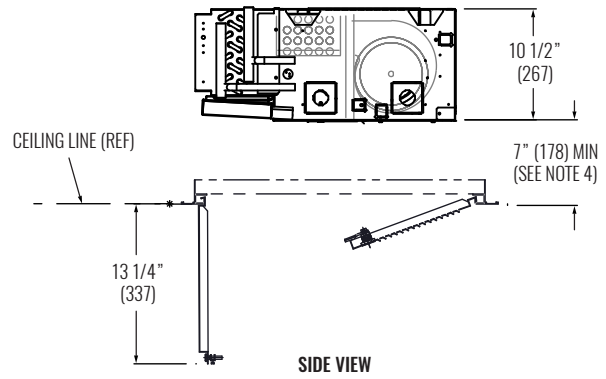
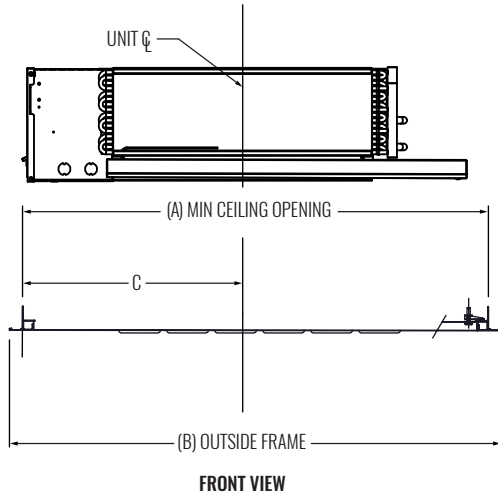
FAN COIL UNITS | HORIZONTAL, LOW PROFILE  
KHF - SERIES A

# KHF - SERIES A

Horizontal Fan Coil Units | Low Profile



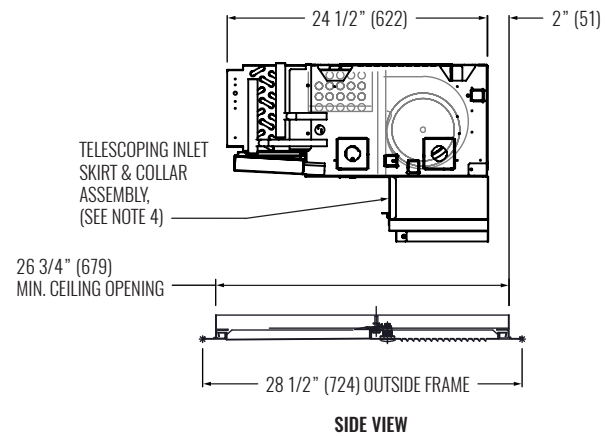
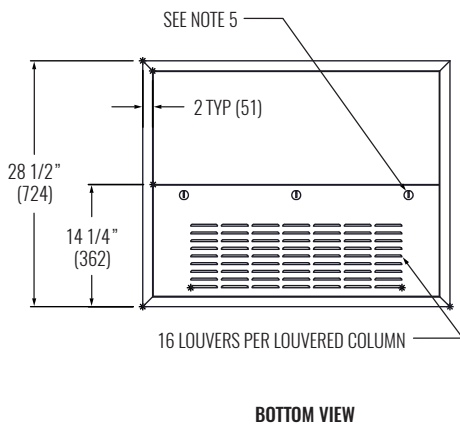
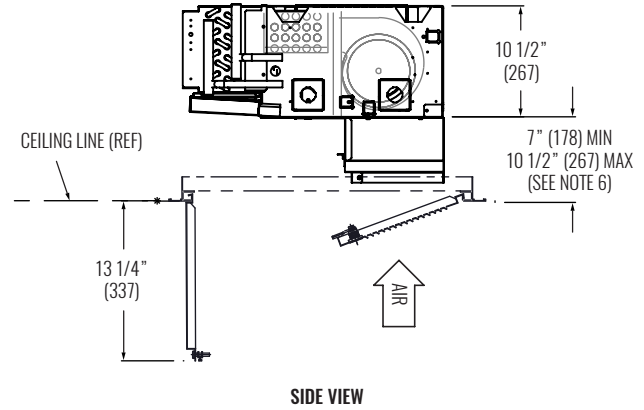
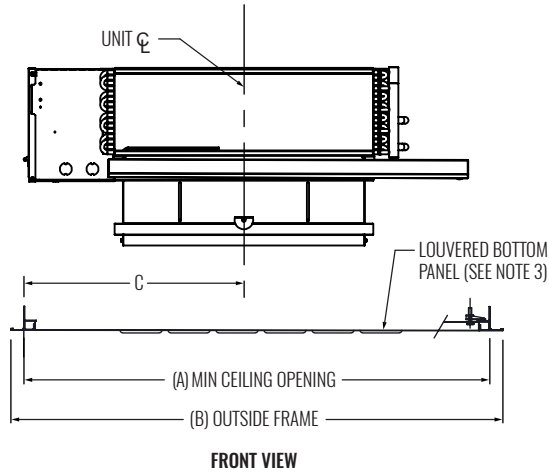
## DIMENSIONAL DATA | KHFP | SOLID BOTTOM ACCESS PANEL



UNIT SIZE	A	B	C
02	38 1/4" (972)	40 1/4" (1022)	19 1/8" (486)
03	41 1/2" (1054)	43 1/2" (1105)	20 3/4" (527)
04	46 1/2" (1181)	48 1/2" (1232)	23 1/4" (591)
06	53 1/4" (1353)	55 1/4" (1403)	26 5/8" (676)
08	60 1/4" (1530)	62 1/4" (1581)	30 1/8" (765)
09	64 1/2" (1638)	66 1/2" (1689)	32 1/4" (819)
10	74 1/4" (1885)	76 1/4" (1937)	37 1/8" (943)
12	82 1/4" (2089)	84 1/4" (2140)	41 1/8" (1045)

NOTES: All dimensions in Inches (millimeters). All dimensions  $\pm 1/4"$  (6mm). Metric values are soft conversion. Left-hand unit shown, right-hand unit opposite. 1/4 turn latch, (2) qty for standard sizes, (3) qty for sizes 10<sup>-12</sup>. Please reference the external feature space requirements submittal for complete service space requirements. Service access may be limited based on the panels installed in relation to the unit.

### DIMENSIONAL DATA | KHFP | TELESCOPING PANEL



UNIT SIZE	A	B	C
02	38 1/4" (972)	40 1/4" (1022)	19 1/8" (486)
03	41 1/2" (1054)	43 1/2" (1105)	20 3/4" (527)
04	46 1/2" (1181)	48 1/2" (1232)	23 1/4" (591)
06	53 1/4" (1353)	55 1/4" (1403)	26 5/8" (676)
08	60 1/4" (1530)	62 1/4" (1581)	30 1/8" (765)
09	64 1/2" (1638)	66 1/2" (1689)	32 1/4" (819)
10	74 1/4" (1885)	76 1/4" (1937)	37 1/8" (943)
12	82 1/4" (2089)	84 1/4" (2140)	41 1/8" (1045)

NOTES: All dimensions in Inches (millimeters). All dimensions  $\pm 1/4"$  (6mm). Metric values are soft conversion. Left-hand unit shown, right-hand unit opposite. Portions of the inlet louver not directly below unit inlet may require covering in the field on applications where infiltration of ceiling plenum air into space is undesired. Telescoping skirt and collar assembly must be field adjusted to assure a proper fit between filter frame and louvered inlet panel assembly. 1/4 turn latch, (2) qty for standard sizes, (3) qty for sizes 10<sup>-12</sup>. Please reference the external feature space requirements submittal for complete service space requirements. Service access may be limited based on the panels installed in relation to the unit.