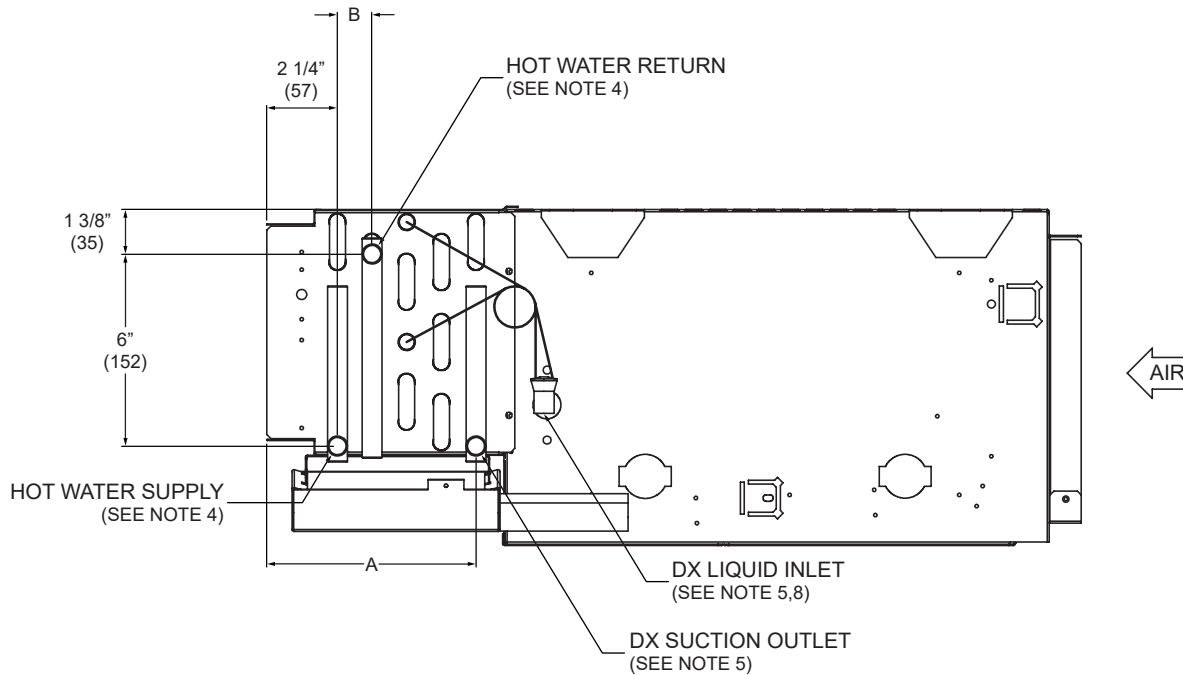


UNIT SIZE	COIL ROWS	A
2 PIPE COOLING	2	3 1/4" (83)
	3	4 3/8" (111)
	4	5 1/2" (140)
	5	6 5/8" (168)

NOTE:

- All dimensions in Inches (millimeters). All dimensions $\pm 1/2"$ (13mm). Metric values are soft conversion.
- All drawings subject to change without notice.
- Model "KHFP" unit shown, typical for model "KHFH" units. Connections shown are internal on "KHFE" units.
- Connection for DX:
 - DX Liquid Inlet: 5/8" ODM copper (1/2" NOM)
 - Suction Outlet: 5/8" ODM copper (1/2" NOM)
- Standard externally foam coated galvanized steel drain pan has 7/8" ODM copper outlet. Stainless steel drain pan has 3/4" MPT galvanized steel outlet.
- Aux. drain outlet is 5/8" ODM copper or 3/8" MPT galvanized steel respectively. Aux. drain outlet is located to the inside of Main Drain Outlet on drain pan, regardless of unit hand.
- Liquid Inlet arrangement may vary.

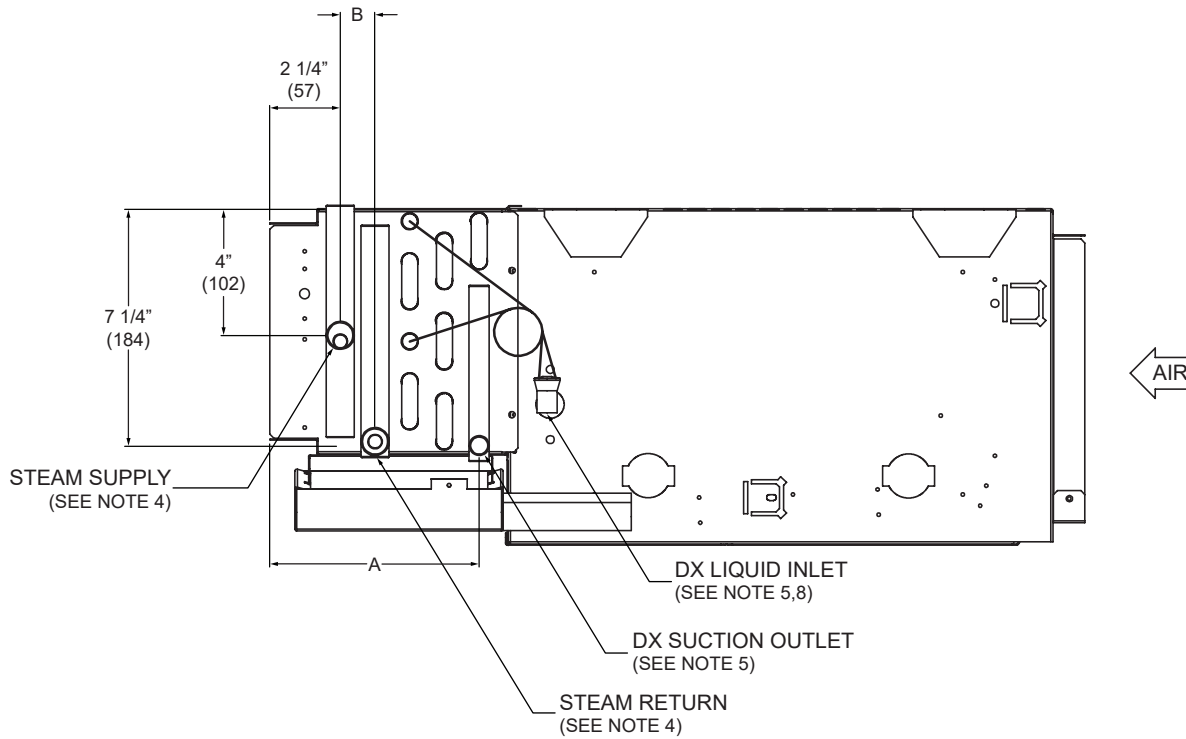


**4 PIPE DX/HW RE-HEAT
LEFT HAND**

4 PIPE DX/HW RE-HEAT			
COIL 1 ROWS	A	COIL 2 ROWS	B
2	4 3/8" (111)	1	1" (25)
3	5 1/2" (140)	1	1" (25)
4	7 5/8" (194)	1	1" (25)
2	4 3/8" (111)	2	1 1/8" (29)
3	5 1/2" (140)	2	1 1/8" (29)

NOTE:

- All dimensions in Inches (millimeters). All dimensions $\pm 1/2"$ (13mm). Metric values are soft conversion.
- All drawings subject to change without notice.
- Model "KHFP" unit shown, typical for model "KHFH" units. Connections shown are internal on "KHFE" units.
- Connection Size:
 - Hot Water Supply: 5/8 ODM (1/2" NOM.)
 - Hot Water Return: 5/8 ODM (1/2" NOM.)
- Connection for DX:
 - DX Liquid Inlet: 5/8" ODM copper (1/2" NOM)
 - Suction Outlet: 5/8" ODM copper (1/2" NOM)
- Standard externally foam coated galvanized steel drain pan has 7/8" ODM copper outlet. Stainless steel drain pan has 3/4" MPT galvanized steel outlet.
- Aux. drain outlet is 5/8" ODM copper or 3/8" MPT galvanized steel respectively. Aux. drain outlet is located to the inside of Main Drain Outlet on drain pan, regardless of unit hand.
- Liquid Inlet arrangement may vary.

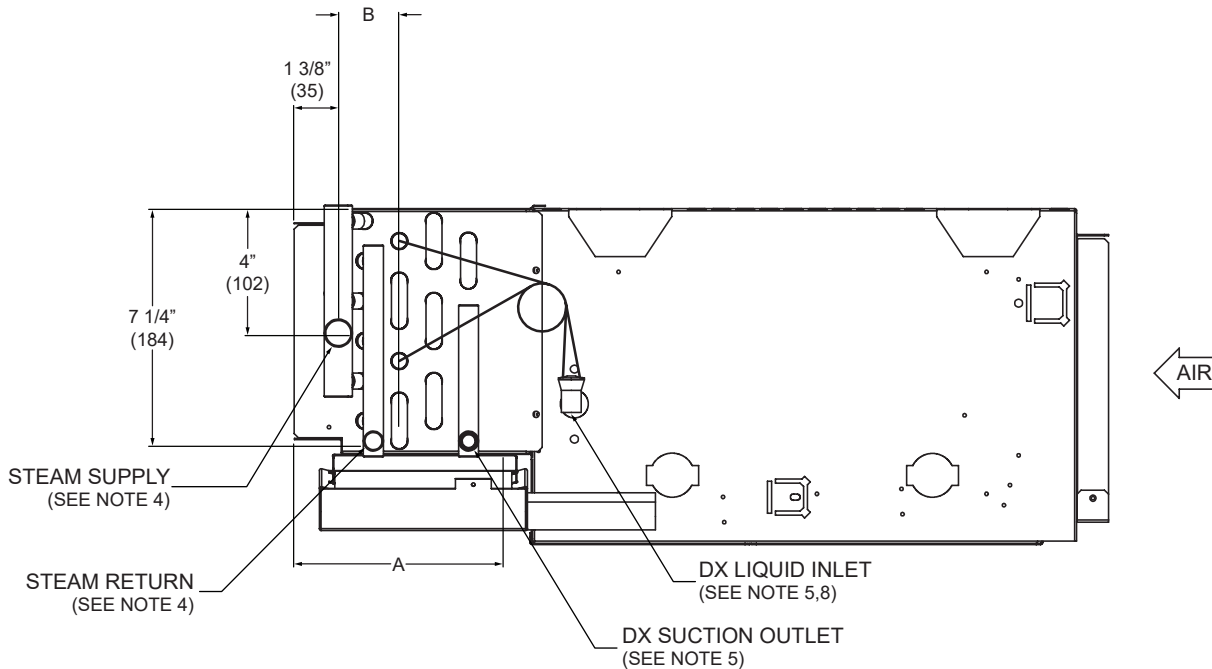


**4 PIPE DX/2R-STEAM RE-HEAT
LEFT HAND**

4 PIPE DX/2R-STEAM RE-HEAT			
COIL 1 ROWS	A	COIL 2 ROWS	B
2	5 1/2" (140)	2	1 1/8" (29)
3	6 1/2" (165)	2	1 1/8" (29)

NOTE:

- All dimensions are inches (millimeters). All dimensions $\pm 1/2$ (13mm). Metric values are soft conversion.
- All drawings subject to change without notice.
- Model "KHFP" unit shown, typical for model "KHFH" units. Connections shown are internal on "KHFE" units.
- Connection Size:
 - Steam Supply: 7/8 ODM (3/4" NOM.)
 - Steam Return: 7/8 ODM (3/4" NOM.)
- Connection for DX:
 - DX Liquid Inlet: 5/8" ODM copper (1/2" NOM)
 - Suction Outlet: 5/8" ODM copper (1/2" NOM)
- Standard externally foam coated galvanized steel drain pan has 7/8" ODM copper outlet. Stainless steel drain pan has 3/4" MPT galvanized steel outlet.
- Aux. drain outlet is 5/8" ODM copper or 3/8" MPT galvanized steel respectively. Aux. drain outlet is located to the inside of Main Drain Outlet on drain pan, regardless of unit hand.
- Liquid Inlet arrangement may vary.



**4 PIPE DX/1R-STEAM RE-HEAT
LEFT HAND**

4 PIPE DX/1R-STEAM RE-HEAT			
COIL 1 ROWS	A	COIL 2 ROWS	B
2	4 3/8" (111)	1	1 1/8" (29)
3	5 1/2" (140)	1	1 1/8" (29)
4	6 5/8" (168)	1	1 1/8" (29)

NOTE:

- All dimensions are inches (millimeters). All dimensions $\pm 1/2$ (13mm). Metric values are soft conversion.
- All drawings subject to change without notice.
- Model "KHFP" unit shown, typical for model "KHFH" units. Connections shown are internal on "KHFE" units.
- Connection Size:
 - Steam Supply: 7/8 ODM (3/4" NOM.)
 - Steam Return: 5/8 ODM (1/2" NOM.)
- Connection for DX:
 - DX Liquid Inlet: 5/8" ODM copper (1/2" NOM)
 - Suction Outlet: 5/8" ODM copper (1/2" NOM)
- Standard externally foam coated galvanized steel drain pan has 7/8" ODM copper outlet. Stainless steel drain pan has 3/4" MPT galvanized steel outlet.
- Aux. drain outlet is 5/8" ODM copper or 3/8" MPT galvanized steel respectively. Aux. drain outlet is located to the inside of Main Drain Outlet on drain pan, regardless of unit hand.
- Liquid Inlet arrangement may vary.