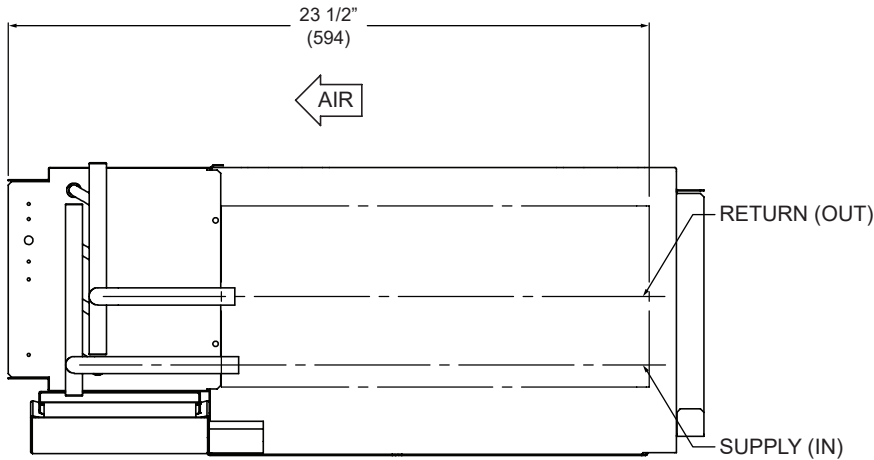
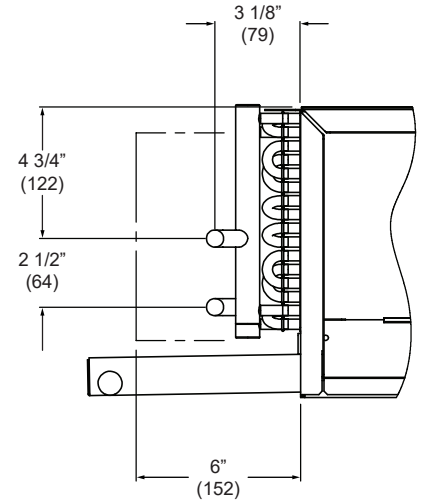
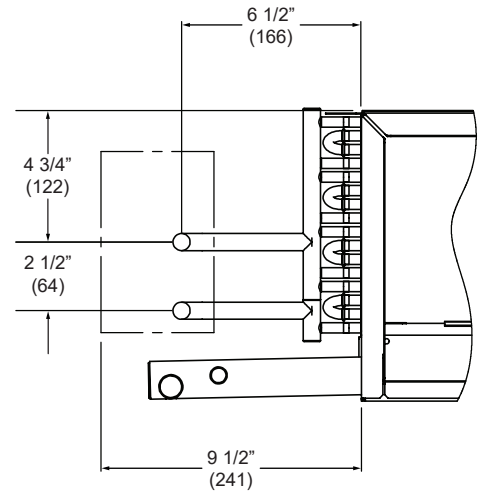


2 PIPE COOLING
LEFT HAND

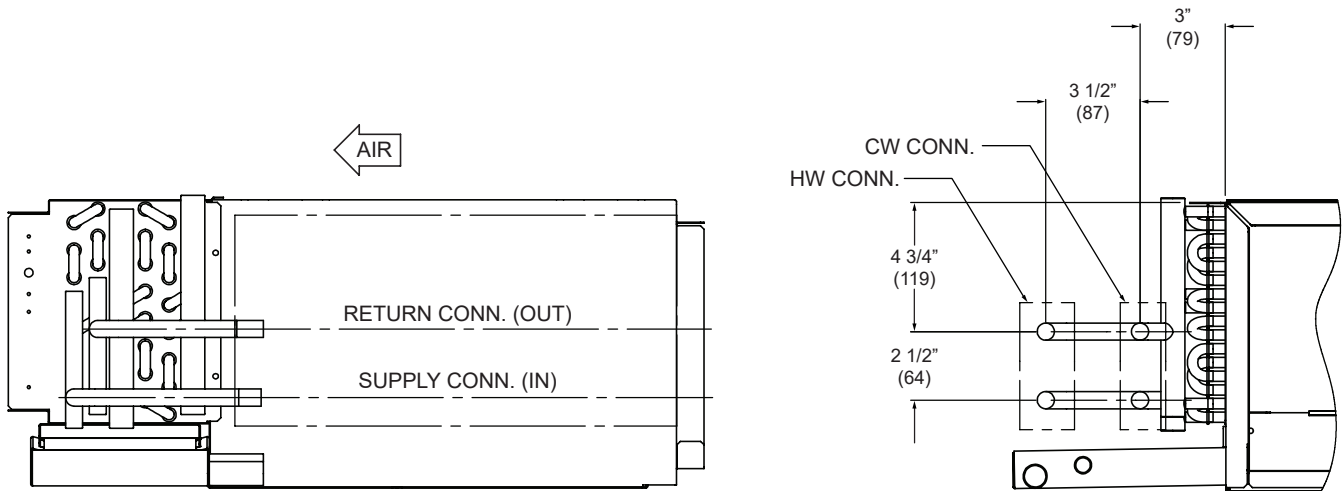
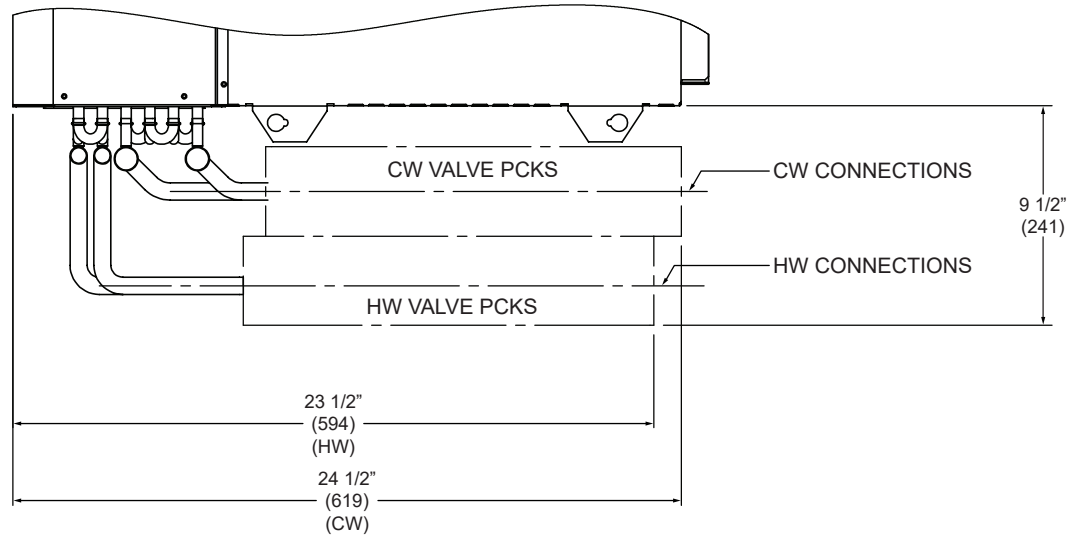


2 PIPE HEATING
(LEFT HAND)



NOTE:

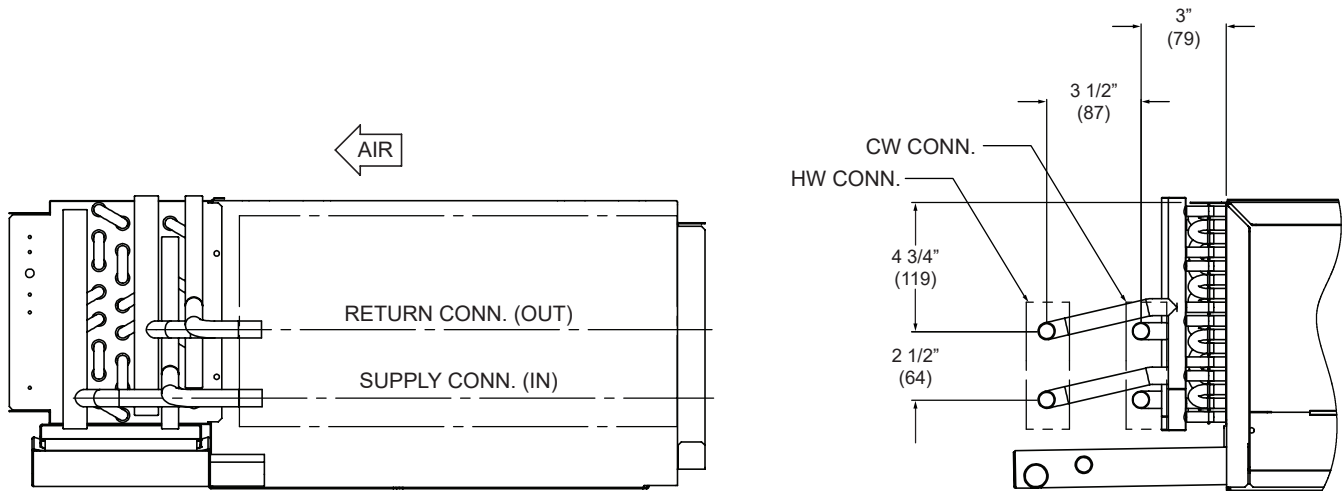
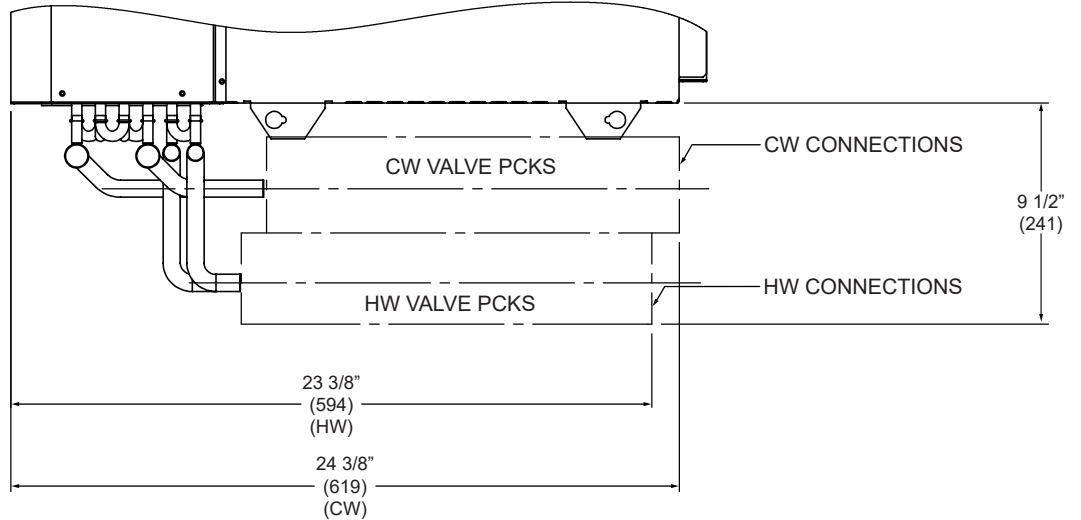
1. All dimensions are inches (millimeters). All dimensions $\pm 1/2"$ (13mm). Metric values are soft conversion.
2. All drawings subject to change without notice.
3. Connection Size:
 - Chilled Water: 5/8 ODM (1/2" NOM.)
 - Hot Water: 5/8 ODM (1/2" NOM.)
4. See "Coil Connection Location" drawing for drain pan specifications.
5. Consult selection summary for valve-package components and specifications.



4 PIPE RE-HEAT
(LEFT HAND)

NOTE:

1. All dimensions are inches (millimeters). All dimensions $\pm 1/2"$ (13mm). Metric values are soft conversion.
2. All drawings subject to change without notice.
3. Connection Size:
 - Chilled Water: 5/8 ODM (1/2" NOM.)
 - Hot Water: 5/8 ODM (1/2" NOM.)
4. See "Coil Connection Location" drawing for drain pan specifications.
5. Consult selection summary for valve-package components and specifications.



4 PIPE PRE-HEAT
(LEFT HAND)

NOTE:

1. All dimensions are inches (millimeters). All dimensions $\pm 1/2"$ (13mm). Metric values are soft conversion.
2. All drawings subject to change without notice.
3. Connection Size:
 - Chilled Water: 5/8 ODM (1/2" NOM.)
 - Hot Water: 5/8 ODM (1/2" NOM.)
4. See "Coil Connection Location" drawing for drain pan specifications.
5. Consult selection summary for valve-package components and specifications.