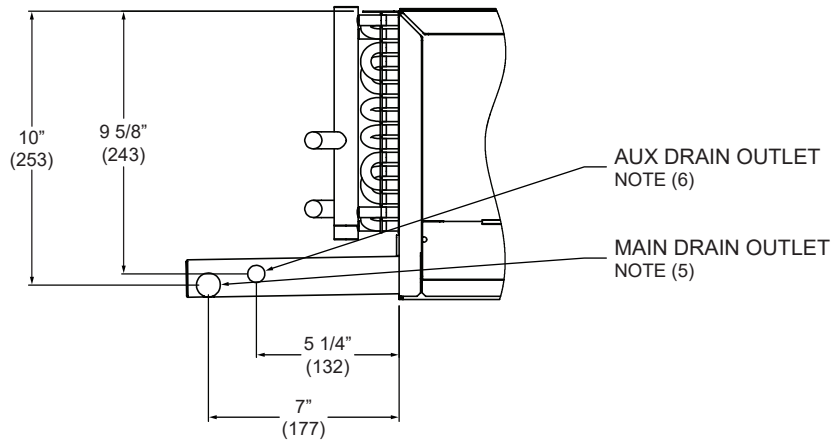


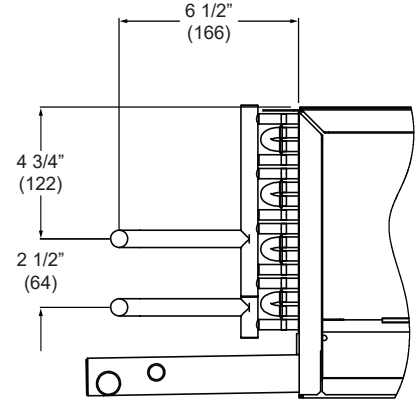
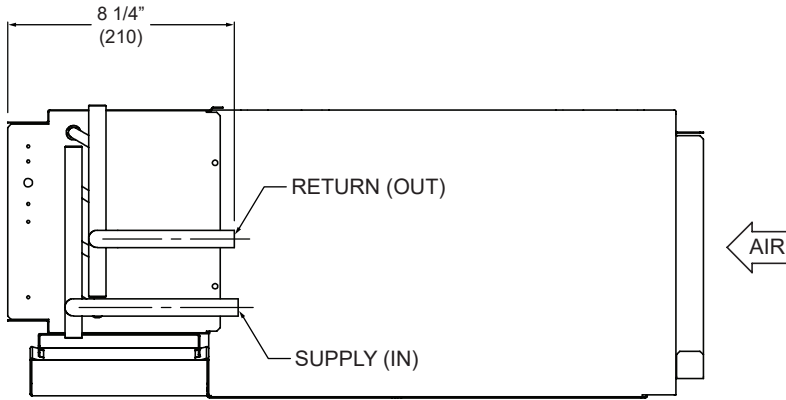
2 PIPE COOLING
FOR VALVE PACKAGES
(LEFT HAND)



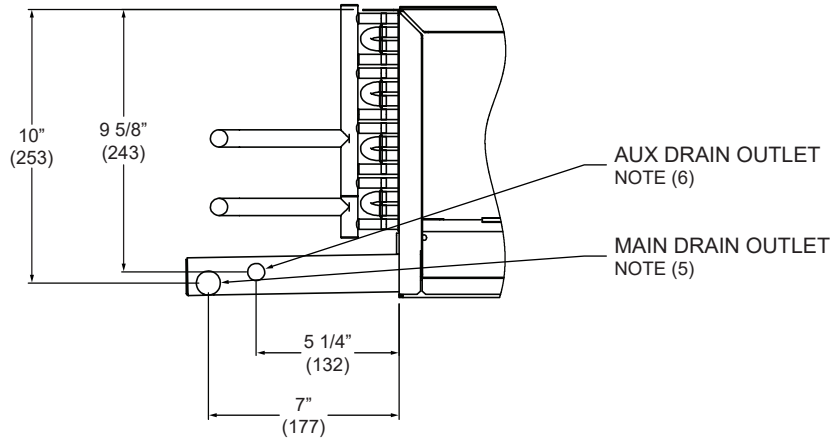
DRAIN LOCATIONS

NOTE:

1. All dimensions are inches (millimeters). All dimensions $\pm 1/2$ (13mm). Metric values are soft conversion.
2. All drawings subject to change without notice.
3. Model "KHFP" unit shown, typical for model "KHFH" units. Connections shown are internal on "KHFE" units.
4. Connection Size:
 - Chilled Water: 5/8 ODM (1/2" NOM.)
 - Hot Water: 5/8 ODM (1/2" NOM.)
5. Standard externally foam coated galvanized steel drain pan has 7/8" ODM copper outlet. Stainless steel drain pan has 3/4" MPT galvanized steel outlet.
6. Aux. drain outlet is 5/8" ODM copper or 3/8" MPT galvanized steel respectively. Auxiliary drain outlet is always closest to the unit when facing outlet end of drain pan, regardless of unit hand.



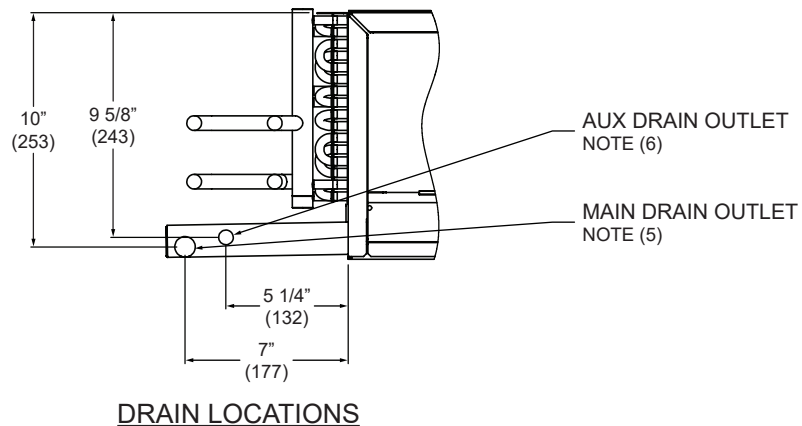
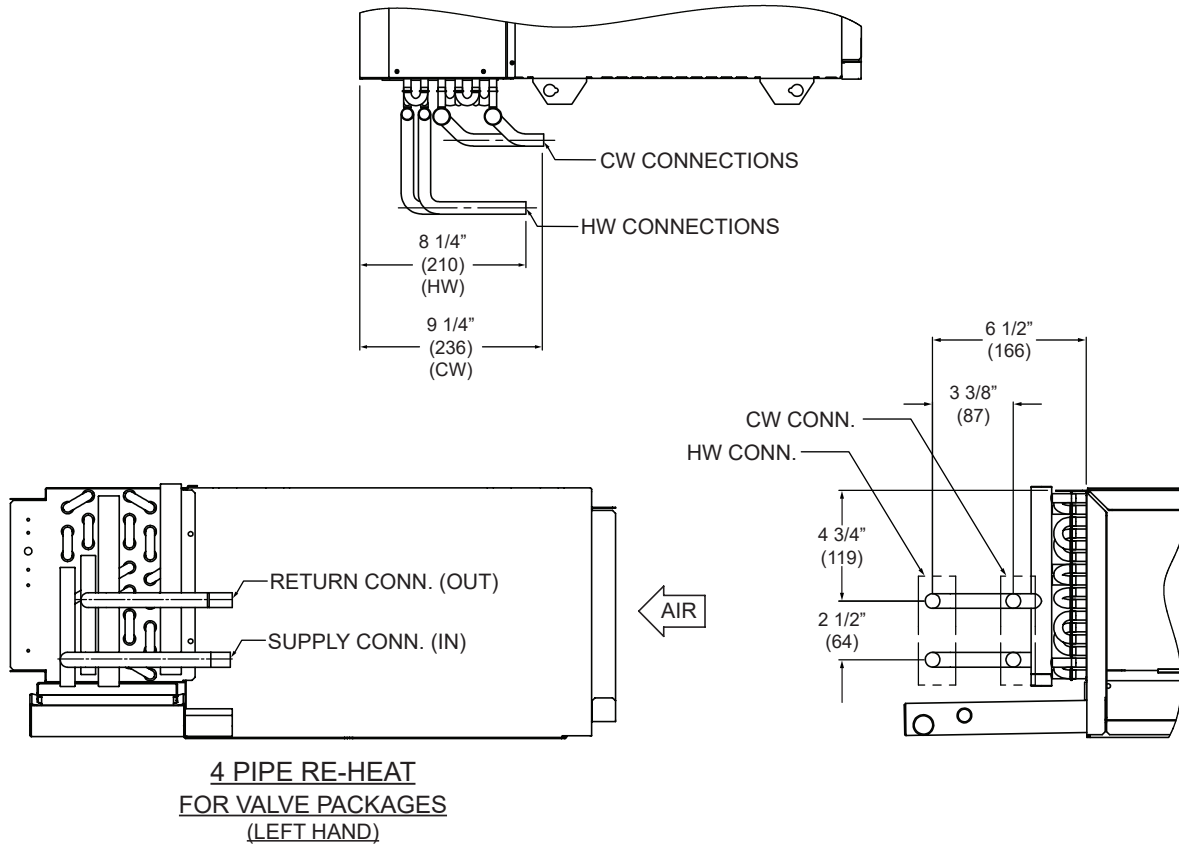
**2 PIPE HEATING
FOR VALVE PACKAGES
(LEFT HAND)**



DRAIN LOCATIONS

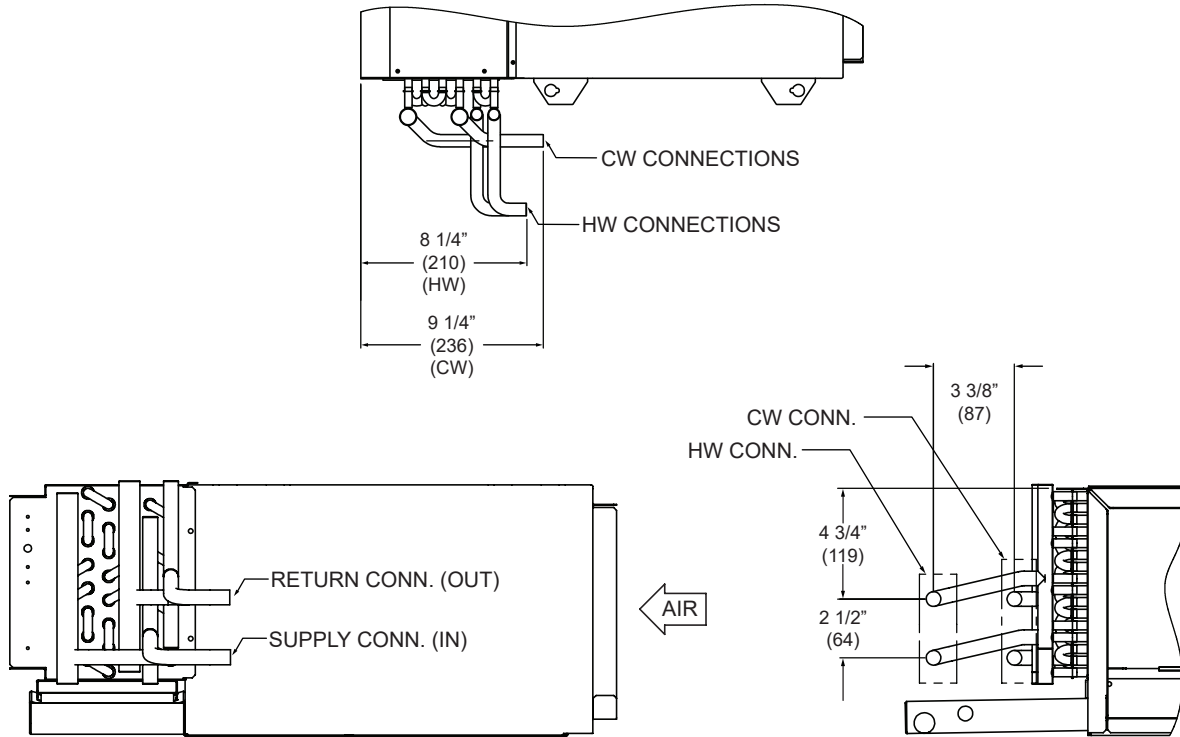
NOTE:

1. All dimensions are inches (millimeters). All dimensions $\pm 1/2$ (13mm). Metric values are soft conversion.
2. All drawings subject to change without notice.
3. Model "KHFP" unit shown, typical for model "KHFH" units. Connections shown are internal on "KHFE" units.
4. Connection Size:
 - Chilled Water: 5/8 ODM (1/2" NOM.)
 - Hot Water: 5/8 ODM (1/2" NOM.)
5. Standard externally foam coated galvanized steel drain pan has 7/8" ODM copper outlet. Stainless steel drain pan has 3/4" MPT galvanized steel outlet.
6. Aux. drain outlet is 5/8" ODM copper or 3/8" MPT galvanized steel respectively. Auxiliary drain outlet is always closest to the unit when facing outlet end of drain pan, regardless of unit hand.

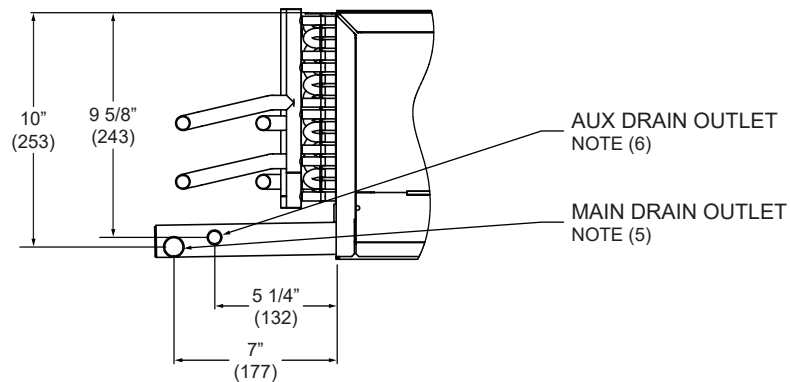


NOTE:

1. All dimensions are inches (millimeters). All dimensions $\pm 1/2$ (13mm). Metric values are soft conversion.
2. All drawings subject to change without notice.
3. Model "KHFP" unit shown, typical for model "KHFH" units. Connections shown are internal on "KHFE" units.
4. Connection Size:
 - Chilled Water: 5/8 ODM (1/2" NOM.)
 - Hot Water: 5/8 ODM (1/2" NOM.)
5. Standard externally foam coated galvanized steel drain pan has 7/8" ODM copper outlet. Stainless steel drain pan has 3/4" MPT galvanized steel outlet.
6. Aux. drain outlet is 5/8" ODM copper or 3/8" MPT galvanized steel respectively. Auxiliary drain outlet is always closest to the unit when facing outlet end of drain pan, regardless of unit hand.



**4 PIPE PRE-HEAT
FOR VALVE PACKAGES
(LEFT HAND)**



DRAIN LOCATIONS

NOTE:

1. All dimensions are inches (millimeters). All dimensions $\pm 1/2$ (13mm). Metric values are soft conversion.
2. All drawings subject to change without notice.
3. Model "KHFP" unit shown, typical for model "KHFH" units. Connections shown are internal on "KHFE" units.
4. Connection Size:
 - Chilled Water: 5/8 ODM (1/2" NOM.)
 - Hot Water: 5/8 ODM (1/2" NOM.)
5. Standard externally foam coated galvanized steel drain pan has 7/8" ODM copper outlet. Stainless steel drain pan has 3/4" MPT galvanized steel outlet.
6. Aux. drain outlet is 5/8" ODM copper or 3/8" MPT galvanized steel respectively. Auxiliary drain outlet is always closest to the unit when facing outlet end of drain pan, regardless of unit hand.