

MODEL

- LMHS-LC - Single duct terminal unit with large casing

FEATURES

- Large casing reduces air pressure drop and increases heating performance of hot water coil
- 20 or 22 gauge casing construction
- Pneumatic, analog, or direct digital controls
- Attenuated units available for critical, low sound applications

LINERS

- Dual Density Fiberglass - 1/2" or 1" thick
- Cellular - Fiber free, 1/2" or 1" thick
- Steriliner - Foil faced duct board, 13/16" thick
- Sterilwall - Solid double wall with 1/2" or 1" thick dual density fiberglass
- Perforated double wall with 1/2" or 1" thick dual density fiberglass

ACCESSORIES (OPTIONAL)

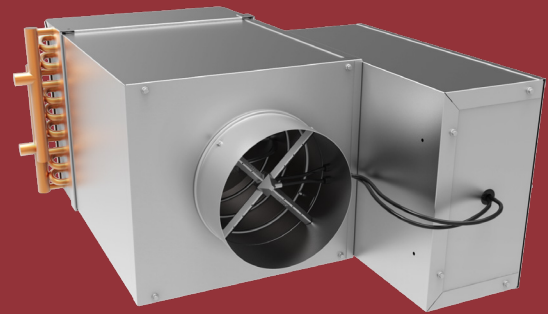
- Hanger brackets
- Disconnect for controls
- 24 VAC step down transformer
- Access door - 6"x9"
- Cam lock access door - 6"x9"

HOT WATER HEAT

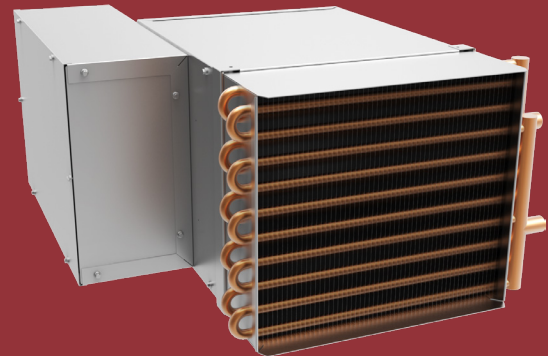
- 1/2" O.D. copper tubes (0.016" tube wall thickness)
- 0.0045" thick aluminum fins
- 10 or 12 FPI (fins per inch)
- 1, 2, 3, or 4 rows of heating
- Vent and drain option available
- Left-hand or right-hand coil connections
- AHRI 410 certified

CERTIFICATIONS

- AHRI 880 certified sound performance data
- ETL Listed - Adherence to UL 429 for units with factory provided transformers



LMHS-LC FRONT VIEW



LMHS-LC BACK VIEW

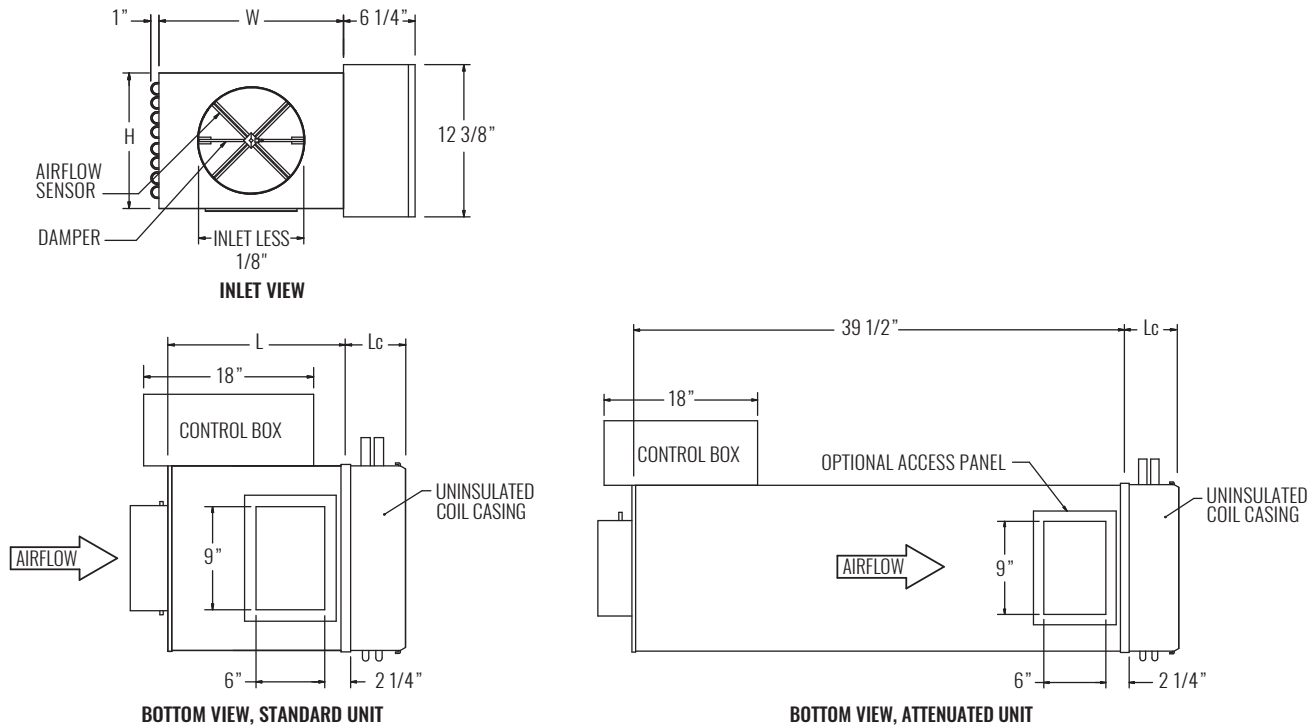


LMHS-LC

Single Duct Terminal Unit, Large Casing



DIMENSIONAL DATA



NOTES: Right-hand unit with electronic control enclosure shown; left-hand is available. Slip and Drive outlet duct connection. Damper extends past base unit on sizes 14 (2\"). See table below for dimensional references.

PERFORMANCE AND DIMENSIONAL DATA

SIZE	PERFORMANCE			DIMENSIONS				
	INLET AIRFLOW RANGE (CFM PER INLET)	RATED AIRFLOW PER INLET (CFM)	RADIATED / DISCHARGE NC	L BASE UNIT	Lc 1 OR 2 ROW COIL	Lc 3 OR 4 ROW COIL	W	H
4"	25 - 230	150	<20 / 26	15 1/2"	5"	7 1/4"	12"	10"
5"	36 - 360	250	20 / 29	15 1/2"	5"	7 1/4"	12"	10"
6"	52 - 515	400	27 / 29	15 1/2"	5"	7 1/4"	12"	10"
7"	70 - 700	550	26 / 31	15 1/2"	5"	7 1/4"	14"	12 1/2"
8"	92 - 920	700	28 / 31	15 1/2"	5"	7 1/4"	14"	12 1/2"
9"	116 - 1160	900	24 / 25	15 1/2"	5"	7 1/4"	16"	15"
10"	145 - 1430	1100	24 / 26	15 1/2"	5"	7 1/4"	16"	15"
12"	205 - 2060	1600	28 / 26	15 1/2"	7 1/2"	9 3/4"	20"	17 1/2"
14"	281 - 2800	2100	25 / 26	15 1/2"	7 1/2"	9 3/4"	24"	18"

NOTES: Information shown is abbreviated. See website for complete information. Discharge sound power is the sound emitted from the unit discharge. Radiated sound power is the sound transmitted through the casing walls. All sound data is based on tests conducted in accordance with AHRI 880-11. NC application data is based on Sound Power levels (dB, re 10⁻¹² Watts) applied to AHRI Standard 885-08 Appendix E, as a function of flow rate shown. All data points listed are application ratings outside the scope of the Certification Program.

© Copyright Krueger 2018