

MODEL

- KVPH - Vertical stack fan coil unit, recessed hi-rise (stand-alone)

FEATURES

- Galvanized steel construction
- 1/2" thick fiberglass, foil faced fiberglass, or cellular foam insulation
- Integral filter rack with 1" throwaway, synthetic media MERV 6, or pleated MERV8 filter
- Manual or motorized outside air damper (optional)
- Riser slot knockouts
- Supply air knockouts
- Single or double deflection discharge grille(s)

COILS

- Cooling - chilled water (3 or 4 rows)
- Heating - hot water reheat (1 or 2 rows)
- 5 total rows of cooling and heating coils maximum
- 3/8" O.D. seamless copper tubes (0.012" tube wall thickness)
- Stainless steel coil casing (optional)
- High efficiency aluminum fin surface
- Removable for service
- Manual air vents
- Automatic air vents (optional)

DRAIN PANS

- Single wall, galvanized steel or stainless steel, externally insulated - fire retardant and antimicrobial
- Positively sloped to drain connection
- Easily removable for cleaning
- Condensate overflow switch (optional)
- 7/8" O.D. primary drain connection
- P-trap factory installed

FAN/MOTOR ASSEMBLIES

- Forwardly curved, DWDI centrifugal type
- 115, 208-230, 220 and 277V, 1-phase, 3-speed PSC motors
- 115, 208-230, 220 and 277V, 1-phase, 3-speed EC motors
- Quick disconnect motor connections
- Removable fan/motor deck for service

ELECTRICAL

- Electric reheat available
- Electrical enclosure with access door for field wiring terminations
- Terminal block for field connections
- Unit and remote mounted three speed fan switches (optional)
- SCR fan speed controller (optional)
- Main fusing (optional)
- Disconnect switch, toggle, or door interlocking (optional)
- Silent electric heat relays and fan relay (optional)



PIPING PACKAGES

- Factory installed
- 1/2" piping size
- 2-way and 3-way 2 position or floating point control valves
- Isolation ball valves with memory stop
- Stainless steel braided hoses (threaded swivel connections)
- Automatic fixed flow control (optional)
- Unions and P/T ports (optional)
- Analog, digital display or programmable thermostats with remote, unit or ADA mounting options

RISERS

- Type-M or L copper with swaged connections
- 3/4" to 3" diameters
- 1/2" and 3/4" closed cell insulation
- Type-M copper condensate riser
- Riser extensions
- Riser cover
- Ship in advance risers

TANDEM ARRANGEMENTS

- Primary/secondary arrangements are available described as other models but similar to KVPH
- KVPS - Secondary, recessed unit, ordered individually
- KVPP - Primary, recessed unit, ordered individually
- KVIP & KVIS - Tandem primary and secondary units with risers and optional fire rated wall plenum (UL 1479), shipped as full assembly

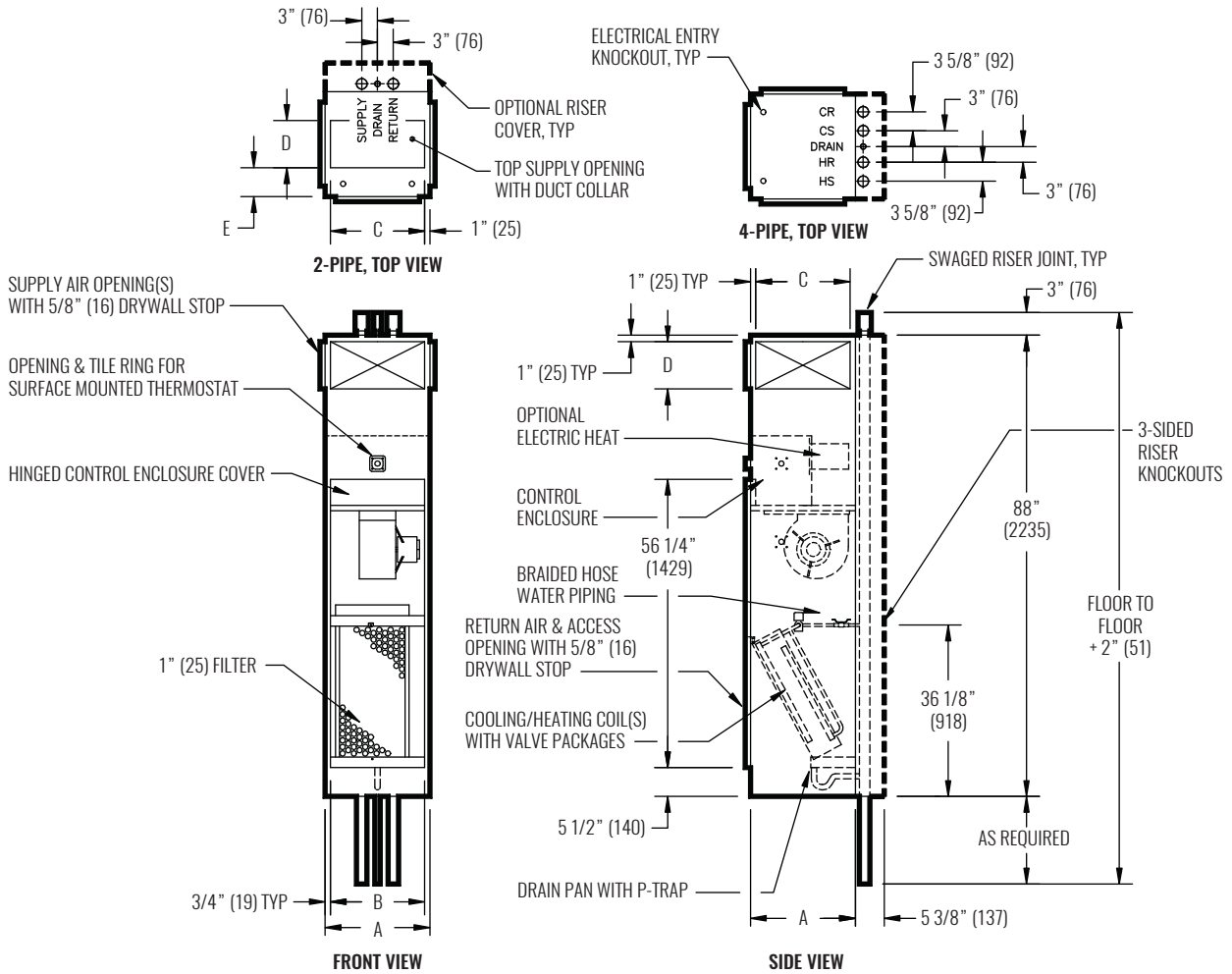
CERTIFICATIONS

- cETL Listed Electric Heat Units - Adherence to UL/ANSI Standard 1995
- AHRI 440 certified performance data

WEB SEARCH: KVPH



DIMENSIONAL DATA



NOTE: Dimensions in parentheses are in millimeters (mm). See table below for dimensional references. Thermostat is shipped loose and may be unit surface mounted via tile ring or remote wall mounted. Back riser is shown, other locations are available.

PERFORMANCE AND DIMENSIONAL DATA

SIZE	PERFORMANCE			DIMENSIONS				
	UNIT SIZE	CFM RANGE	TOTAL COOLING CAPACITY RANGE (MBH)	HEATING CAPACITY RANGE (MBH)	A	B	SINGLE SUPPLY	
						C	D	
03	330 - 337	8 - 11	21 - 31	18" (457)	16 1/2" (419)	16" (406)	8" (203)	6" (152)
04	443 - 451	11 - 14	24 - 39	18" (457)	16 1/2" (419)	16" (406)	8" (203)	6" (152)
06	557 - 577	16 - 18	32 - 33	20" (508)	18 1/2" (470)	18" (457)	12" (305)	6" (152)
08	800 - 836	19 - 24	39 - 40	20" (508)	18 1/2" (470)	18" (457)	12" (305)	6" (152)
10	911 - 960	23 - 27	53 - 82	24" (610)	22 1/2" (572)	22" (559)	14" (356)	8" (203)
12	1171 - 1206	28 - 33	61 - 62	24" (610)	22 1/2" (572)	22" (559)	14" (356)	8" (203)

NOTES: Information shown is abbreviated. See website for complete information. Data is based on 115/1/60 3-speed PSC motor on high fan speed with 0.05" ESP. Cooling coil: 75°F DB and 63°F WB EAT, 45°F EWT, 55°F LWT. Heating coil: 70°F DB EAT, 180°F EWT, 160°F LWT. CFM and coil performance ranges will vary depending on coil combination selected.