

MODEL

- KVFH - Vertical standard fan coil unit, concealed

FEATURES

- Galvanized steel construction
- Cellular foam insulation
- Integral filter rack with 1" throwaway, MERV 8, or MERV 13 filter
- Recessed wall panels - with or without supply louver, standard or extended length (optional)
- Manual or motorized outside air damper (optional)
- Tamper proof fasteners (optional)
- Leveling legs (optional)
- Wall boxes (optional)

COILS

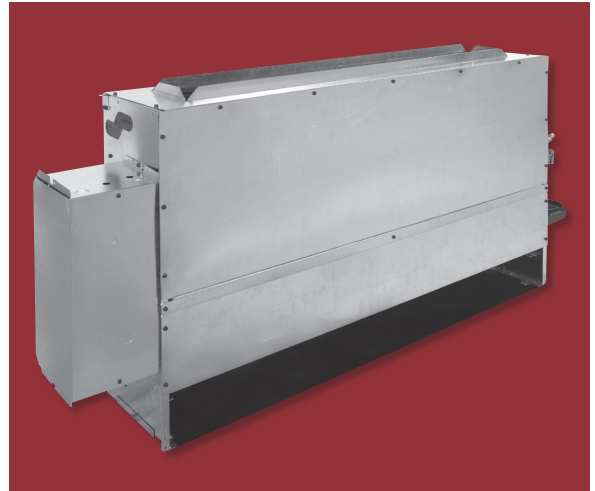
- Cooling - chilled water or DX (2, 3, or 4 rows)
- Heating - hot water reheat (1 or 2 rows)
- 4 total rows of cooling and heating coils maximum
- 3/8" O.D. seamless copper tubes (0.012" tube wall thickness)
- 1/2" O.D. seamless copper tubes (0.016" tube wall thickness)
- Left or right hand, same or opposite end connections
- Galvanized or stainless steel coil casing
- High efficiency aluminum fin surface
- Removable for service
- Manual air vents
- Automatic air vents (optional)

DRAIN PANS

- Single wall, galvanized steel or stainless steel, externally insulated - fire retardant and antimicrobial
- Positively sloped to drain connection
- Easily removable for cleaning
- Condensate overflow switch (optional)
- 3/4" MPT auxiliary drain pan connection
- Double wall plastic auxiliary drip pan, standard or extended length

FAN/MOTOR ASSEMBLIES

- Forwardly curved, DWDI centrifugal type
- 115, 220, and 277V, 1-phase, 3-speed PSC motors
- 115, 208-230, 220 and 277V, 1-phase, 3-speed fixed, 3-speed adjustable, or 2-10VDC EC motors
- Quick disconnect motor connections
- Removable fan assembly for service



ELECTRICAL

- Fin tubular electric reheat available
- Electrical junction box for field wiring terminations
- Terminal block for field connections
- Unit or remote mounted three speed fan switches (optional)
- SCR fan speed controller (optional)
- Main fusing (optional)
- Disconnect switch, toggle or door interlocking (optional)
- Silent electric heat relays and fan relay (optional)

PIPING PACKAGES

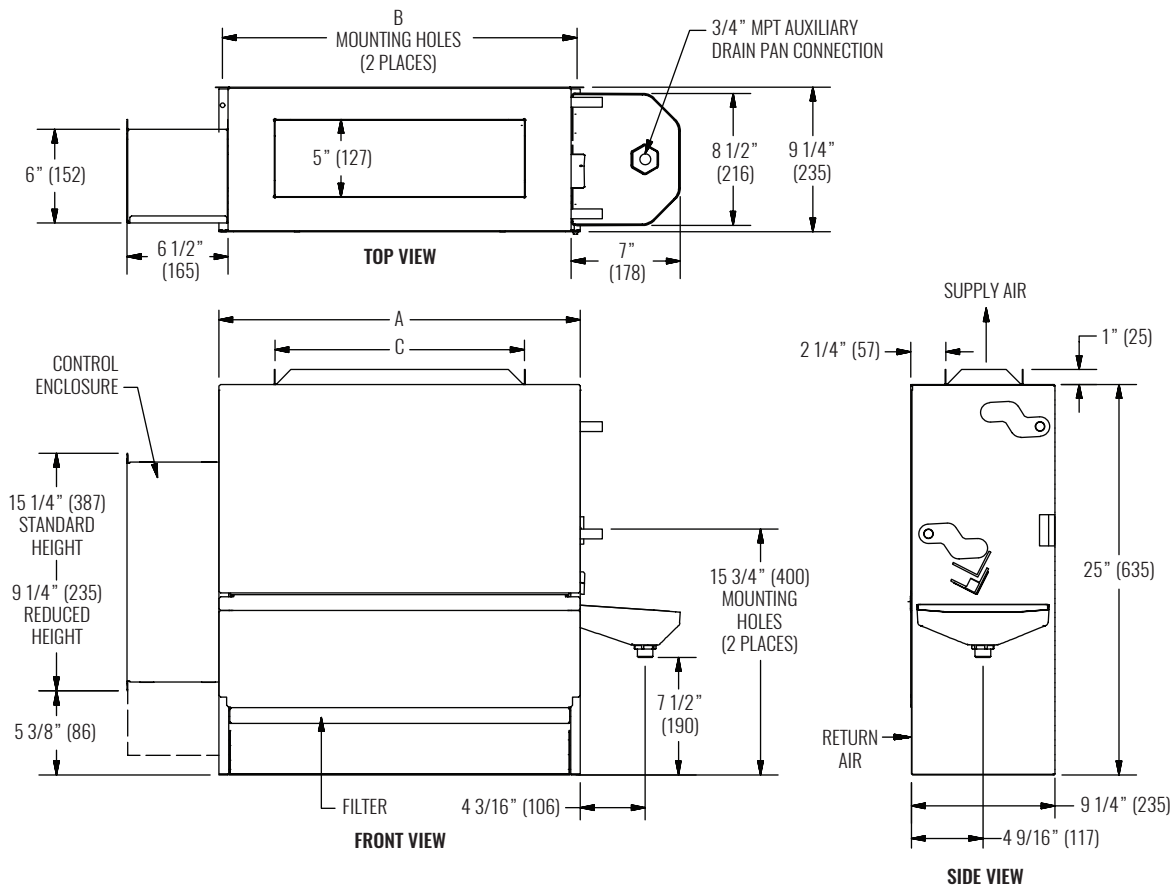
- Factory installed or shipped loose for field installation
- 1/2" piping size
- 2-way or 3-way, two position or floating point control valves
- Isolation ball valves with memory stop
- Automatic fixed flow control (optional)
- Unions and P/T ports (optional)
- Remote mounted digital display or programmable thermostats

CERTIFICATIONS

- cETL Listed Electric Heat Units - Adherence to UL/ANSI Standard 1995
- AHRI 440 certified performance data



DIMENSIONAL DATA



NOTE: Dimensions in parentheses are in millimeters (mm). See table below for dimensional references. Right hand coil connection shown, left hand is available. Junction box size and location varies with unit features. Provide sufficient clearance to access electrical controls and comply with applicable codes and ordinances. Some control or piping package options may require extended drain pans.

PERFORMANCE AND DIMENSIONAL DATA

SIZE	PERFORMANCE			DIMENSIONS		
	UNIT SIZE	CFM RANGE	TOTAL COOLING CAPACITY RANGE (MBH)	HEATING CAPACITY RANGE (MBH)	A	B
02	227 - 231	4 - 5	10 - 16	23 3/16" (589)	22 3/4" (578)	16" (406)
03	296 - 308	3 - 5	13 - 21	27 3/16" (691)	26 3/4" (679)	20" (508)
04	421 - 442	3 - 8	16 - 29	33 3/16" (843)	32 3/4" (832)	26" (660)
06	539 - 558	10 - 11	20 - 39	43 3/16" (1097)	42 3/4" (1086)	36" (914)
08	614 - 650	11 - 13	24 - 44	45 3/16" (1148)	44 3/4" (1137)	38" (965)
10	815 - 845	12 - 19	33 - 59	59 3/16" (1503)	58 3/4" (1492)	52" (1320)
12	842 - 893	15 - 18	39 - 63	67 3/16" (1707)	66 3/4" (1695)	60" (1524)

NOTES: Information shown is abbreviated. See website for complete information. Data is based on 115/1/60 3-speed PSC motor on high fan speed with 0.05" ESP. Cooling coil: 75°F DB and 63°F WB EAT, 45°F EWT, 55°F LWT. Heating coil: 70°F DB EAT, 180°F EWT, 160°F LWT. CFM and coil performance ranges will vary depending on coil combination selected.