

MODEL

- KVFS - Vertical standard fan coil unit, slant top cabinet

FEATURES

- Slant top
- Galvanized steel construction
- Cellular foam insulation
- Integral filter rack with 1" throwaway, MERV 8, or MERV 13 filter
- Top stamped louver or linear bar supply grille
- Standard or extended end pockets with removable panels
- 2" - 8" falsebacks for additional piping space (optional)
- Manual or motorized outside air damper (optional)
- Tamper proof fasteners (optional)
- Leveling legs (optional)
- Wall boxes (optional)
- Toe kick cover (optional)
- Parametric width and height is available

COILS

- Cooling - chilled water or DX (2, 3, or 4 rows)
- Heating - hot water reheat(1 or 2 rows)
- 4 total rows of cooling and heating coils maximum
- 3/8" O.D. seamless copper tubes (0.012" tube wall thickness)
- 1/2" O.D. seamless copper tubes (0.016" tube wall thickness)
- Left or right hand, same or opposite end connections
- Galvanized or stainless steel coil casing
- High efficiency aluminum fin surface
- Removable for service
- Manual air vents
- Automatic air vents (optional)

DRAIN PANS

- Single wall, galvanized steel or stainless steel, externally insulated – fire retardant and antimicrobial
- Positively sloped to drain connection
- Easily removable for cleaning
- Condensate overflow switch (optional)
- 3/4" MPT auxiliary drain pan connection
- Double wall plastic auxiliary drip pan, standard or extended length

FAN/MOTOR ASSEMBLIES

- Forwardly curved, DWDI centrifugal type
- 115, 220 and 277V, 1-phase, 3-speed PSC motors
- 115, 208-230, 220 and 277V, 1-phase, 3-speed fixed, 3-speed adjustable, or 2-10VDC EC motors
- Quick disconnect motor connections
- Removable fan assembly for service



ELECTRICAL

- Fin tubular electric reheat available
- Electrical junction box for field wiring terminations
- Terminal block for field connections
- Unit or remote mounted three speed fan switches (optional)
- SCR fan speed controller (optional)
- Main fusing (optional)
- Disconnect switch, toggle or door interlocking (optional)
- Silent electric heat relays and fan relay (optional)

PIPING PACKAGES

- Factory installed or shipped loose for field installation
- 1/2" piping size
- 2-way or 3-way, two position or floating point control valves
- Isolation ball valves with memory stop
- Automatic fixed flow control (optional)
- Unions and P/T ports (optional)
- Digital display or programmable thermostats
- Unit or remote mounted thermostats

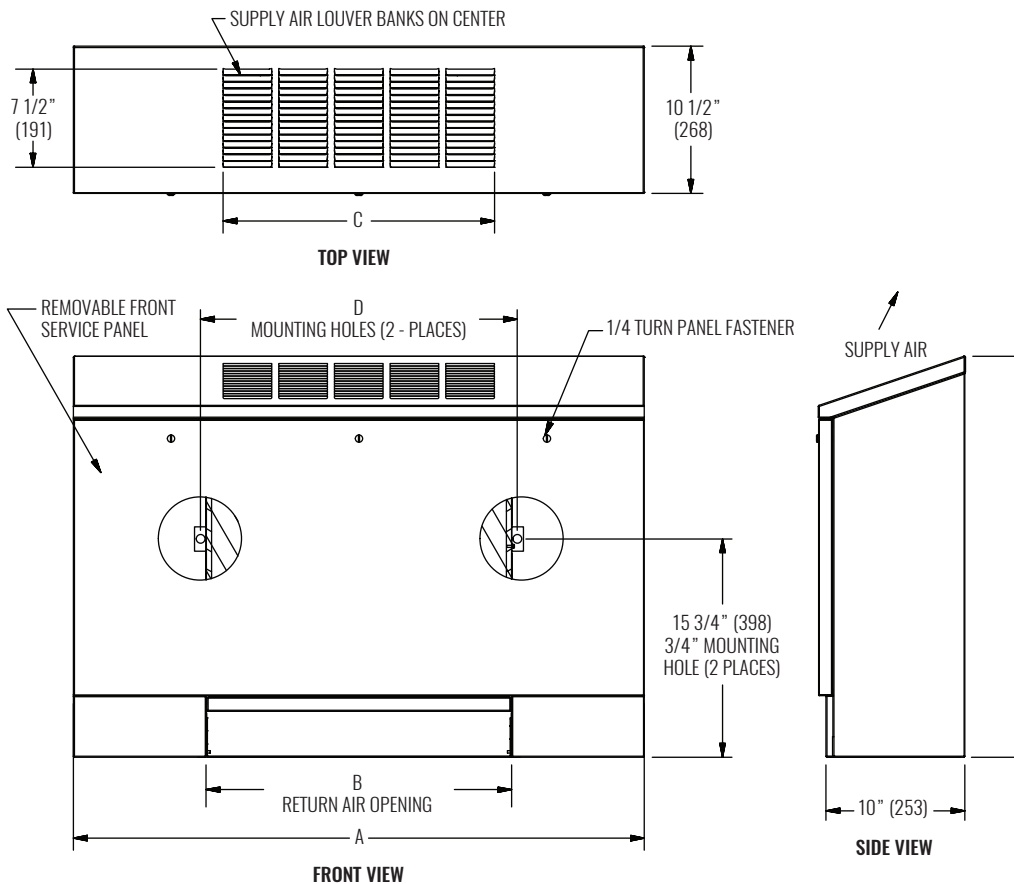
CERTIFICATIONS

- cETL Listed Electric Heat Units - Adherence to UL/ANSI Standard 1995
- AHRI 440 certified performance data

WEB SEARCH: KVFS



DIMENSIONAL DATA



NOTE: Dimensions in parentheses are in millimeters (mm). See table below for dimensional references. A and E dimensions are selectable in 1" increments, internal chassis and air openings remain the same. Junction box size and location varies with unit features. Provide sufficient clearance to access electrical controls and comply with applicable codes and ordinances. Some control or piping package options may require extended end pockets and/or extended drain pans.

PERFORMANCE AND DIMENSIONAL DATA

SIZE	PERFORMANCE			DIMENSIONS				
	CFM RANGE	TOTAL COOLING CAPACITY RANGE (MBH)	HEATING CAPACITY RANGE (MBH)	A (RANGE)	B	C	D	E (RANGE)
02	216 - 221	4 - 5	9 - 16	40" (1016) - 53" (1346)	22" (559)	19 1/2" (495)	22 3/4" (578)	28 3/4" (730) - 40 3/4" (1035)
03	282 - 284	3 - 5	12 - 21	44" (1117) - 57" (1448)	26" (660)	23 1/2" (597)	26 3/4" (679)	28 3/4" (730) - 40 3/4" (1035)
04	393 - 408	3 - 8	16 - 28	50" (1270) - 63" (1600)	32" (813)	27 1/2" (699)	32 3/4" (832)	28 3/4" (730) - 40 3/4" (1035)
06	507 - 524	9 - 10	20 - 37	60" (1524) - 73" (1854)	42" (1067)	39 1/2" (1003)	42 3/4" (1086)	28 3/4" (730) - 40 3/4" (1035)
08	555 - 575	11 - 12	23 - 41	62" (1574) - 75" (1905)	44" (1118)	39 1/2" (1003)	44 3/4" (1137)	28 3/4" (730) - 40 3/4" (1035)
10	737 - 761	12 - 17	32 - 55	76" (1930) - 89" (2261)	58" (1473)	55 1/2" (1410)	58 3/4" (1492)	28 3/4" (730) - 40 3/4" (1035)
12	852 - 882	15 - 19	39 - 64	84" (2133) - 95" (2413)	66" (1676)	63 1/2" (1613)	66 3/4" (1695)	28 3/4" (730) - 40 3/4" (1035)

NOTES: Information shown is abbreviated. See website for complete information. Data is based on 115/1/60 3-speed PSC motor on high fan speed with 0.05" ESP. Cooling coil: 75°F DB and 63°F WB EAT, 45°F EWT, 55°F LWT. Heating coil: 70°F DB EAT, 180°F EWT, 160°F LWT. CFM and coil performance ranges will vary depending on coil combination selected.