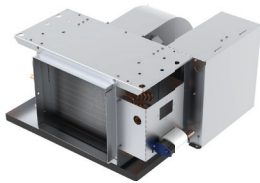


KHG SERIES A: HORIZONTAL HIGH-PERFORMANCE FAN COILS



As a result of their high performance, flexibility, and versatility, Krueger KHG Series A high performance fan coil units are suitable for a wide variety of applications, including condominiums, hotels, motels, and general commercial uses. Additionally, they meet or exceed the stringent quality standards of the institutional market.



KHGH

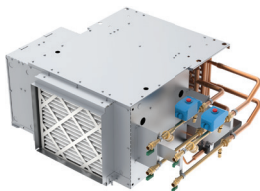
High-Performance Fan Coil Unit, Concealed Ceiling

CFM Range
600 to 2,400

Max ESP
Up to 0.90"

Max Coil Rows
Up to 8 rows

This model is a low cost option and uses the ceiling space as the return plenum.



KHGP

Horizontal High-Performance Fan Coil Unit, Concealed with Plenum

CFM Range
600 to 2,400

Max ESP
Up to 0.95"

Max Coil Rows
Up to 8 rows

Special features include a built-in plenum for ducted return air and an optional telescoping bottom access panel



KHGE

Horizontal High-Performance Fan Coil Unit, Exposed Cabinet

CFM Range
600 to 2,000

Max ESP
Up to 0.90"

Max Coil Rows
Up to 8 rows

Special features include stamped louver supply and return grilles and a powder coat finish.

KHG SERIES A: HORIZONTAL HIGH-PERFORMANCE FAN COILS



STANDARD FEATURES*

CONSTRUCTION

All Units

- AHRI 440 certified and labeled
- Galvanized steel construction
- 1/2" thick fiberglass insulation
- 1 1/2" duct discharge collar
- Holes are provided at four points for hanging units

Plenum Units

- Integral filter rack with 1" throwaway filter
- Integral rear ducted return - field reversible to bottom return

Exposed Units

- Single deflection rear return grille
- Double deflection discharge grille
- Durable powder coat paint
- 18 gauge cabinet construction

COILS

- AHRI 410 certified and labeled
- Cooling - 3, 4, 6-row chilled water or DX, heat pump compatible
- Heating - 1, 2, 3 or 4-row hot water or 1 or 2-row steam; reheat or preheat position
- 8 total rows of cooling and heating coils maximum
- 3/8" O.D. seamless copper tubes
- 0.012" tube wall thickness
- High efficiency aluminum fin surface for optimizing heat transfer, pressure drop and carryover
- Left or right hand connections
- Manual air vent

DRAIN PANS

- Single wall, galvanized steel, externally insulated – fire retardant and antimicrobial closed cell foam
- Sloped to drain connection
- Tool-free removable
- 7/8" O.D. primary drain connection

FAN ASSEMBLIES

- Forward curved, DWDI centrifugal type
- 115 volt, single phase, three tap PSC motors
- Quick disconnect motor connections
- Removable fan(s)/motor(s) for service

ELECTRICAL

- cETL listed for safety compliance
- Electrical junction box for field wiring terminations
- Terminal block for field connections

ELECTRIC HEAT

- cETL listed as an assembly for safety compliance
- Integral electric heat assembly with removable electric heat rack for easy service
- Automatic reset primary and back-up secondary thermal limits
- Single point power connection
- Electrical enclosure with hinged bottom access door and removable side access panel

OPTIONAL FEATURES*

CONSTRUCTION

All Units

- Foil faced fiberglass insulation
- Elastomeric closed cell foam insulation

Plenum Units

- Bottom return
- Mixing box with top/rear or rear/bottom dampers - field reversible
- Damper actuator
- Spare 1" throwaway filters
- 1" and 2" pleated filters

Exposed Units

- Single deflection bottom return grille
- Ducted supply / ducted rear return

COILS

- 1/2" O.D. seamless copper tubes
- 0.016" or 0.025" tube wall thickness
- Automatic air vents
- Stainless steel coil casings

DRAIN PANS

- Stainless steel with external insulation
- 5/8" O.D. secondary drain connection
- Auxiliary drip pan

FAN ASSEMBLIES

- 208-230 & 277 volt, single phase, three tap PSC motors
- ECM™ motors

ELECTRICAL

- Side access electrical enclosure
- Silent solid state fan relays
- SCR fan speed controller (only for high speed)
- Toggle disconnect switch
- Condensate overflow switch (drain pan)
- Main fusing
- Unit and remote mounted three speed fan switches
- Fan relay packages
- Control power transformers

ELECTRICAL HEAT

- Door interlocking disconnect switches
- Main fusing
- Silent relay / contactor

PIPING PACKAGES

- Factory assembled – shipped loose or pre-installed
- 1/2", 3/4", and 1", 2 way and 3-way normally closed, 2-position electric motorized valves
- Isolation ball valves with memory stop
- Fixed and adjustable flow control devices
- Unions and P/T ports
- Modulating control valves

THERMOSTATS

- Remote mounted analog, digital display or programmable
- 2 and 4-pipe control sequences
- Automatic and manual changeover
- Integral three speed fan switches

* See individual models for their exact set of available features.