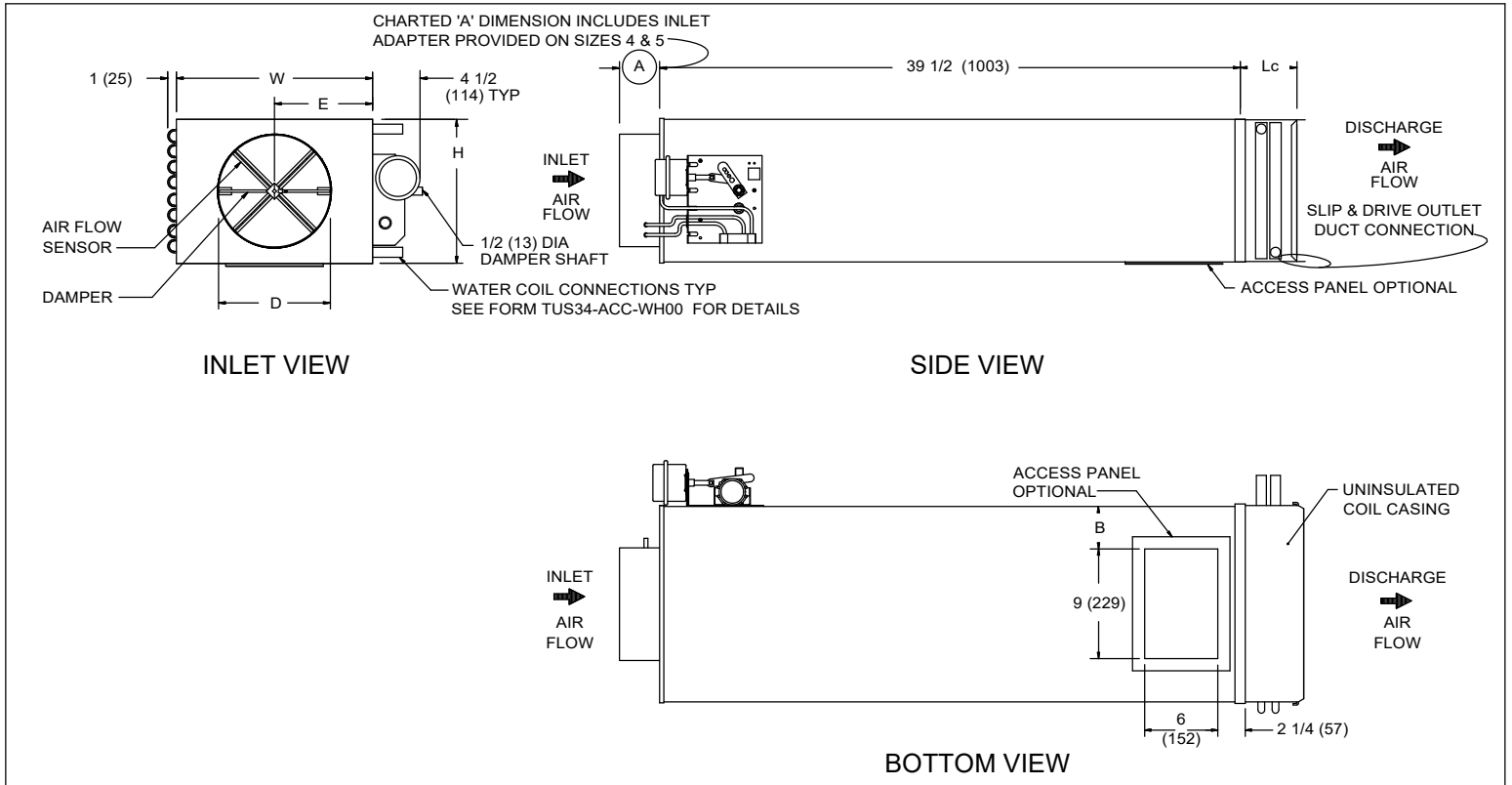


## LMHS-LC

### ATTENUATED SINGLE DUCT WITH LARGE CASING WITH HOT WATER COIL & PNEU. CONTROL

## SUBMITTAL SHEET



#### STANDARD FEATURES:

- 22 Ga. Zinc coated steel construction
- 1/2" thick dual density fiberglass insulation meeting **NFPA 90A** and **UL 181** safety requirements
- Four quadrant averaging cross flow sensor
- Hot water coils. See form TUS34-ACC-WH00 for dimensions and specifications
- Pneumatic pressure independent controls
- Compressed air consumption: 1.0 scfh @ 20psig
- AHRI 880 certified sound ratings

#### OPTIONAL FEATURES:

- Liners:
  - 1" dual density fiberglass
  - 1/2" Cellular insulation
  - 1" Cellular insulation
  - Sterilwall w/ 1/2" fiberglass
  - Sterilwall w/ 1" fiberglass
  - Perf. Double Wall w/ 1/2" fiberglass
  - Perf. Double Wall w/ 1" fiberglass
  - Steriliner
  - None
- 20 Ga. Zinc coated steel construction
- Linear averaging sensor
- Left hand control
- Right hand control
- Left hand water coil connection
- Right hand water coil connection
- Bottom access panel
- Cam lock bottom access panel
- Hanger brackets
- Direct acting thermostat
- Reverse acting thermostat
- Pneu. actuator only
- Normally open damper
- Normally closed damper

**NOTE:** Right hand configuration shown, left hand available.

#### DIMENSIONS ARE GIVEN AS INCHES (MM)

INLET SIZE	NOM MAX CFM (L/S)	W	H	A	B	D	E	Lc
4	230 (109)	12 (305)	10 (254)	5 3/8 (136)	1 1/2 (38)	3 7/8 (98)	6 (152)	SEE FORM TUS34-ACC-WH00
5	360 (170)	12 (305)	10 (254)	5 3/8 (136)	1 1/2 (38)	4 7/8 (124)	6 (152)	
6	515 (243)	12 (305)	10 (254)	3 3/8 (86)	1 1/2 (38)	5 7/8 (149)	6 (152)	
7	700 (330)	14 (356)	12 1/2	3 3/8 (86)	2 1/2 (64)	6 7/8 (175)	7 (178)	
8	920 (434)	14 (356)	12 1/2	3 3/8 (86)	2 1/2 (64)	7 7/8 (200)	7 (178)	
9	1160 (547)	16 (406)	15 (381)	3 3/8 (86)	3 1/2 (89)	8 7/8 (225)	8 (203)	
10	1430 (674)	16 (406)	15 (381)	3 3/8 (86)	3 1/2 (89)	9 7/8 (251)	8 (203)	
12	2060 (972)	20 (508)	17 1/2	3 3/8 (86)	5 1/2 (140)	11 7/8 (302)	10 (254)	
14	2800 (1321)	24 (610)	18 (457)	3 3/8 (86)	7 1/2 (191)	13 7/8 (352)	12 (305)	