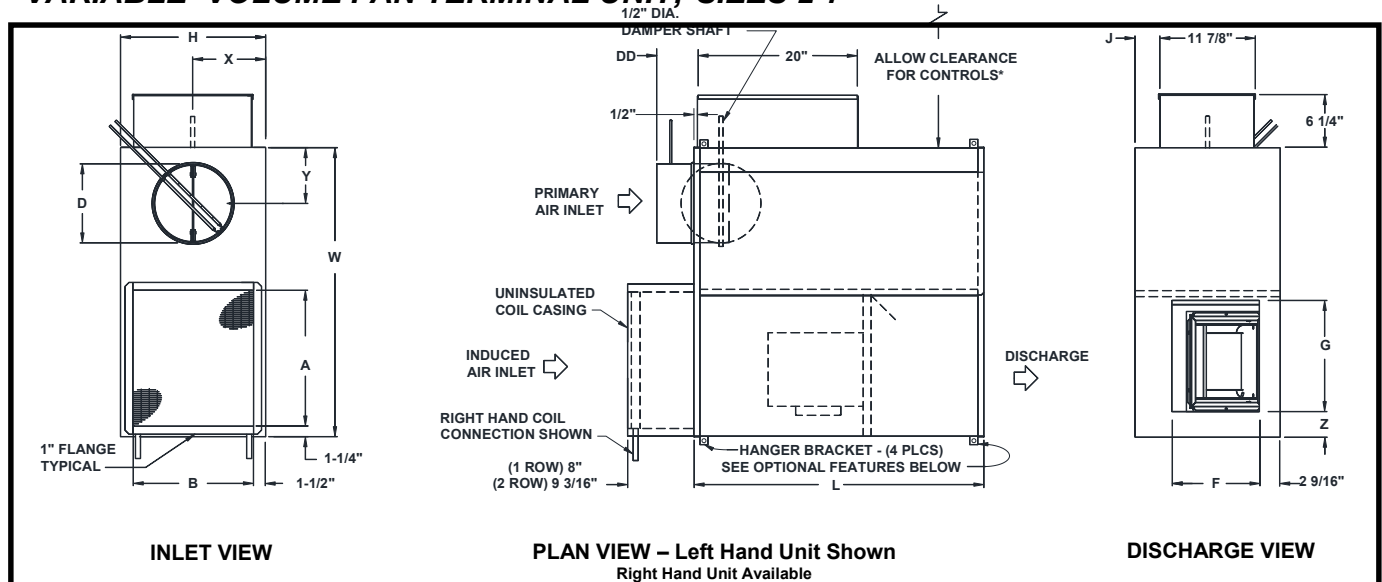


JOB NAME _____
 ARCHITECT _____
 ENGINEER _____
 CONTRACTOR _____
 LOCATION _____

SUBMITTAL SHEET
 Form Number TUS0333.6 Effective Date 8/20
 Replaces FORM TUS0333.5



**KQFP w/ ELECTRONIC CONTROLS & HOT WATER HEAT ON INDUCED AIR INLET
 VARIABLE VOLUME FAN TERMINAL UNIT, SIZES 2-7**



STANDARD FEATURES:

- 20 Ga. galvanized steel construction
- Control enclosure for electronic components
- 1/2" thick dual density fiberglass insulation meeting **NFPA 90A** and **UL 181** safety requirements
- 120V 208V/240V 277V multi-voltage, single speed, single phase, permanently lubricated PSC motors
- Field adjustable fan speed control
- Integral induced air attenuator
- Motor/blower isolation
- Back draft damper assembly
- Four quadrant averaging cross flow sensor inlet sizes 6-10 (DD=4 7/8") sizes 12-16 (DD=6 7/8").
- Removable bottom panel allows easy access to motor-blower assembly and primary air damper
- Discharge requires a flanged duct connection by others.
- Factory supplied 24 volt control transformer
- **ETL listed – Adherence to UL1995 and CSA C22.2 No.236.95.**
- **AHRI certified sound ratings**

OPTIONAL FEATURES:

- ECM Motor (Available on Unit Size 4 & 7)
 - Manual Control 0-10Vdc Remote Control
 - 2-10Vdc Remote Control
 - 120V 208V/240V 277V
- Liners:
 - 1" Dual density fiberglass insulation
 - 1/2" Cellular insulation
 - 1" Cellular insulation
 - 13/16" Steriliner Duct Board Insulation
 - 1/2" Foil encapsulated fiberglass insulation
 - 1" Foil encapsulated fiberglass insulation
 - Solid Metal Liner w/ 1/2" Dual Density Fiberglass
 - Perforated Metal Liner w/ 1/2" Dual Density Fiberglass
- Linear average sensor / inlet size 6-10 (DD = 4 7/8"), sizes 12 – 16 (DD = 6 7/8")
- Motor disconnect Cam lock bottom access
- Motor fusing Coil vent and drain
- Induced air filter (Unit Size 2-4: 19"x17"x1", Unit Size 5-7: 27"x20"x1")
- Dust tight control enclosure
- Hanger Brackets (not available with Double wall or Perf Double wall)

NOTE: Dimensions are given in inches

*Check NEC for unit clearance requirements

UNIT SIZE	INLET SIZE	PSC HP	ECM HP	L	W	H	INDUCED AIR		D	DISCHARGE		J	X	Y	Z
							A	B		F	G				
2	06	1/4	-	36 1/8	36 1/8	18 1/16	17	15 1/8	5 7/8	11	14	3 1/8	9	6	2 5/8
2	08	1/4	-	36 1/8	36 1/8	18 1/16	17	15 1/8	7 7/8	11	14	3 1/8	9	6	2 5/8
3	08	1/4	-	36 1/8	36 1/8	18 1/16	17	15 1/8	7 7/8	11	14	3 1/8	9	6	2 5/8
3	10	1/4	-	36 1/8	36 1/8	18 1/16	17	15 1/8	9 7/8	11	14	3 1/8	9	7	2 5/8
4	08	1/4	1/2	36 1/8	36 1/8	18 1/16	17	15 1/8	7 7/8	11	14	3 1/8	9	6	2 5/8
4	10	1/4	1/2	36 1/8	36 1/8	18 1/16	17	15 1/8	9 7/8	11	14	3 1/8	9	7	2 5/8
4	12	1/4	1/2	36 1/8	36 1/8	18 1/16	17	15 1/8	11 7/8	11	14	3 1/8	9	8	2 5/8
5	12	1/2	-	42 1/8	46 1/8	20 1/16	25	17 5/8	11 7/8	15	17	4 1/8	10	8	4 7/8
5	14	1/2	-	42 1/8	46 1/8	20 1/16	25	17 5/8	13 7/8	15	17	4 1/8	10	10	4 7/8
6	14	1/2	-	42 1/8	46 1/8	20 1/16	25	17 5/8	13 7/8	15	17	4 1/8	10	10	4 7/8
6	16	1/2	-	42 1/8	46 1/8	20 1/16	25	17 5/8	15 7/8	15	17	4 1/8	10	10 1/4	4 7/8
7	12	3/4	1	42 1/8	46 1/8	20 1/16	25	17 5/8	11 7/8	15	17	4 1/8	10	8	4 7/8
7	14	3/4	1	42 1/8	46 1/8	20 1/16	25	17 5/8	13 7/8	15	17	4 1/8	10	10	4 7/8
7	16	3/4	1	42 1/8	46 1/8	20 1/16	25	17 5/8	15 7/8	15	17	4 1/8	10	10 1/4	4 7/8