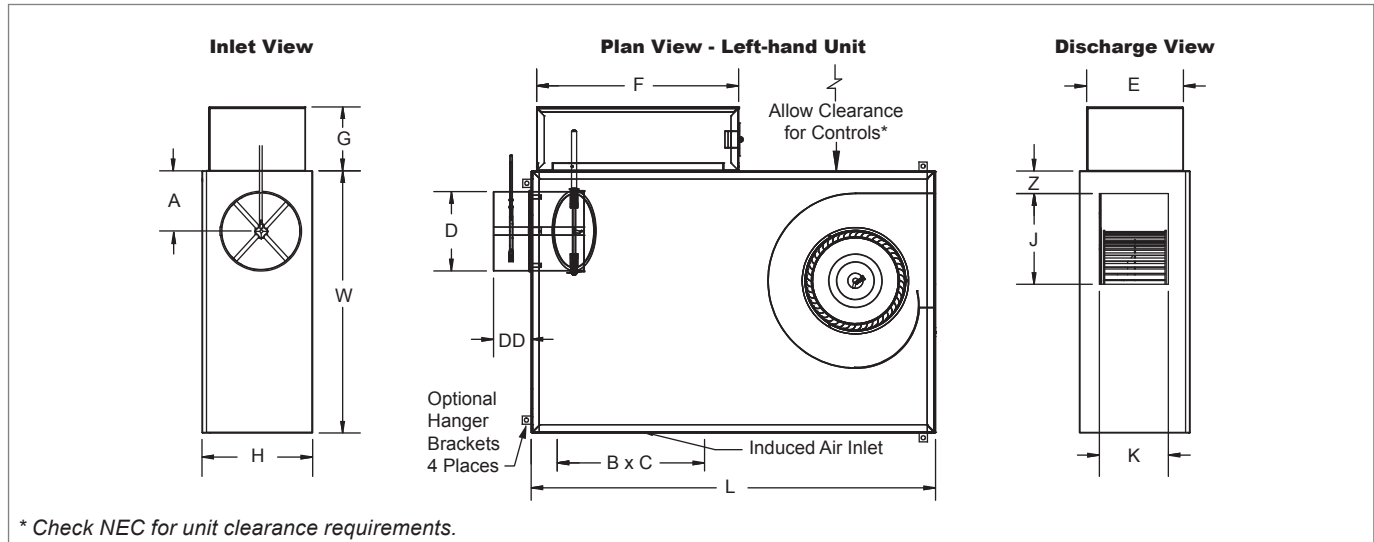


**KLPS Base Unit Dimensional Information**

**KLPS BASE UNIT, INLET, PLAN, AND DISCHARGE VIEWS (UNIT SIZES 1, 2, 3, & 5)**



\* Check NEC for unit clearance requirements.

**KLPS BASE UNIT, DIMENSIONAL DETAILS (UNIT SIZES 1, 2, 3, & 5)**

Unit Size	Inlet Size	PSC Motor	ECM Motor	L	W	H	A	Induced Air Inlet		D	DD	Control Enclosure			Discharge		Z
		HP	HP					B	C			E	F	G	J	K	
1	04	N/A	1/3	48"	32"	8 5/8"	5"	18"	6 3/4"	3 7/8"	6 7/8"	8 1/8"	32 1/8"	8 1/8"	10"	5 7/8"	2"
	05									4 7/8"	6 7/8"						
	06									5 7/8"	4 7/8"						
	07									6 7/8"	4 7/8"						
2	06	N/A	1/3	48"	32"	9 1/2"	5"	18"	6"	5 7/8"	4 7/8"	8 1/8"	32 1/8"	8 1/8"	10"	5 7/8"	2"
	08						6"			7 7/8"	4 7/8"						
3	08	1/4	1/3	40"	26"	11"	5"	14 5/8"	9"	7 7/8"	4 7/8"	9 5/8"	20"	6 1/4"	9"	6 7/8"	2 1/4"
	10						6"			9 7/8"	4 7/8"						
5	08	1/2	1/2	46"	36"	17"	6"	17"	14"	7 7/8"	4 7/8"	12"	20"	6 1/4"	10"	10 5/8"	6 1/4"
	10						7"			9 7/8"	4 7/8"						
	12						8"			11 7/8"	6 7/8"						
	14						10"			13 7/8"	6 7/8"						

NOTE: Left-hand base unit with electronic control enclosure shown; right-hand is available.

**KLPS Base Unit Features & Options**

**STANDARD FEATURES (UNIT SIZES 1, 2, 3, & 5)**

- 20 gage galvanized steel casing construction.
- Available heights for unit size 1 (8 5/8"), unit size 2 (9 1/2"), unit size 3 (11"), and unit size 5 (17").
- Control enclosure for electronic components.
- 1/2" Thick, Dual density fiberglass insulation that meets NFPA 90A and UL 181 safety requirements.
- [120, 208/240, or 277 volt, single-voltage, single-phase, single-speed] permanently lubricated PSC motors. (Unit size 3 and 5 only.)
- Field adjustable fan speed control.
- Removable bottom panel allows easy access to all internal components for maintenance.
- Four quadrant, center averaging airflow sensor.
- Includes 24 volt control transformer.
- ETL listed; adherence to UL 1995 and CSA C22.2 No. 236.95.
- AHRI certified sound ratings.

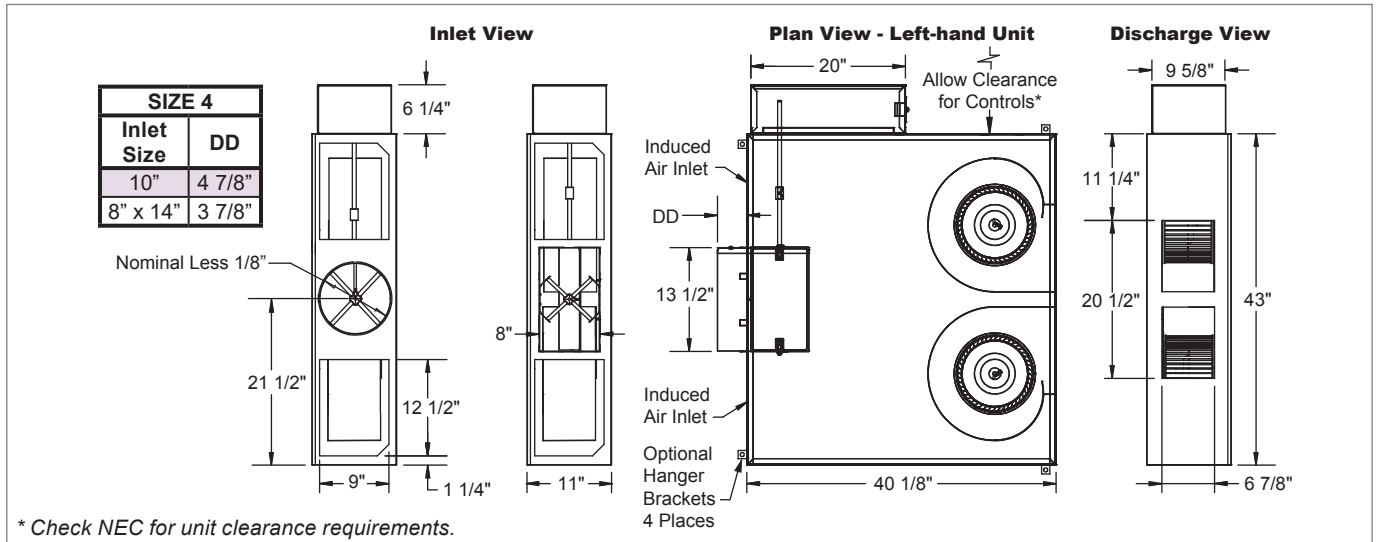
**OPTIONAL FEATURES (UNIT SIZES 1, 2, 3, & 5)**

- Liners: 1/2" or 1" Cellular insulation, 1/2" or 1" Foil encapsulated fiberglass insulation, Sterilwall, or Perforated doublewall. NOTE: 1" Thick liner options available on unit size 5 only.
- Linear averaging airflow sensor.
- [120, 208/240, or 277 volt, single-voltage] ECM motor with manual or remote adjustable speed controller.
- Left-hand or right-hand control enclosure.
- Motor toggle disconnect switch.
- Motor fusing.
- Induced air filter, construction type; unit size 1 (18 7/8"x7 1/2"x1"), unit size 2 (19"x8 5/8"x1"), unit size 3 (17"x11"x1"), and unit size 5 (19"x16 1/2"x1").
- Dust tight control enclosure.
- Hanger brackets.
- Dual access panels with optional Cam locks.

FAN POWERED TERMINAL UNITS

KLPS

© KRUEGER 2012

**KLPS Base Unit Dimensional Information**
**KLPS BASE UNIT, INLET, PLAN, AND DISCHARGE VIEWS (UNIT SIZE 4)**


NOTE: Left-hand base unit with electronic control enclosure shown; right-hand is available.

**KLPS Base Unit Features & Options**
**STANDARD FEATURES (UNIT SIZE 4)**

- 20 gage galvanized steel casing construction.
- Height is 11".
- Control enclosure for electronic components.
- 1/2" Thick, Dual density fiberglass insulation that meets NFPA 90A and UL 181 safety requirements.
- [120, 208/240, or 277 volt, single-voltage, single-phase, single-speed] permanently lubricated PSC motors.
- Field adjustable fan speed control.
- Removable bottom panel allows easy access to all internal components for maintenance.
- Four quadrant, center averaging airflow sensor.
- Includes 24 volt control transformer.
- ETL listed; adherence to UL 1995 and CSA C22.2 No. 236.95.
- AHRI certified sound ratings.

**OPTIONAL FEATURES (UNIT SIZE 4)**

- Liners: 1/2" Cellular insulation, 1/2" Foil encapsulated fiberglass insulation, Sterilwall, or Perforated doublewall.
- Linear averaging airflow sensor.
- [120, 208/240, or 277 volt, single-voltage] ECM motor with manual or remote adjustable speed controller.
- Left-hand or right-hand control enclosure.
- Motor toggle disconnect switch.
- Motor fusing.
- Induced air filter, construction type (15"x11"x1"), quantity 2.
- Dust tight control enclosure.
- Hanger brackets.
- Dual access panels with optional Cam locks, quantity 2.