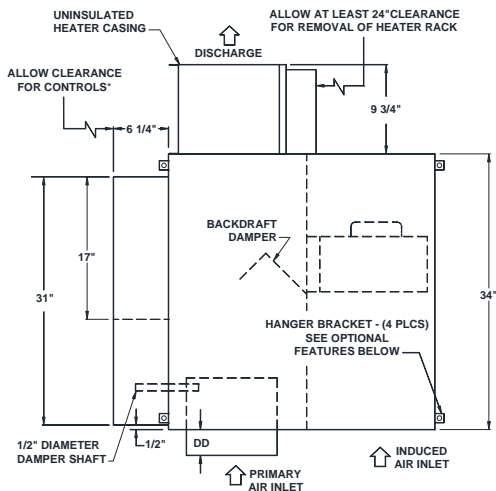


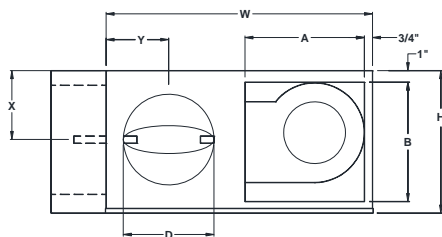
JOB NAME _____
 ARCHITECT _____
 ENGINEER _____
 CONTRACTOR _____
 LOCATION _____



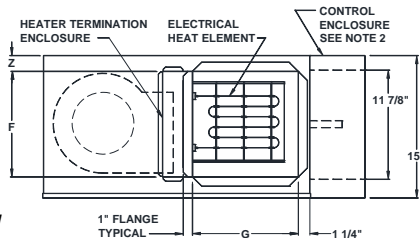
QFV Unit Sizes 2 - 7
ELECTRIC REHEAT VARIABLE VOLUME FAN TERMINAL UNIT



PLAN VIEW - LEFT HAND BOX
 CONTROLS AND SENSORS NOT SHOWN



INLET VIEW



DISCHARGE VIEW

NOTE :

- Dimensions are given in inches
- Digital or Analog control enclosure 31" x 11 7/8",
 Pneumatic control enclosure 17" x 15".

STANDARD FEATURES:

- 22 Ga. galvanized steel construction
- Control enclosure provided for electronic components
- 1/2" thick dual density fiberglass insulation meeting **NFPA 90A** and **UL 181** safety requirements
- Automatic reset thermal cutout
- Field adjustable fan speed control
- 120V 208V/240V 277V multi-voltage, single speed, single phase, permanently lubricated PSC motors
- Removable bottom panel allows easy access to all internal components for maintenance
- Four quadrant averaging cross flow sensor
- Positive pressure heater air flow switch
- Terminal block
- 24 volt control transformer and fan interlocking relay
- Flanged discharge connection on electric reheat coil
- 80/20 Ni-Cr element
- **ETL** listed; **AHRI** certified sound ratings

OPTIONAL FEATURES:

- 20 Ga. galvanized steel construction
- Liners:
 - 1" dual density fiberglass insulation
 - 1/2" Foil encapsulated fiberglass insulation
 - 1" Foil encapsulated fiberglass insulation
 - 1/2" Cellular
 - 1" Cellular
- Linear averaging sensor
- Hanger brackets
- Induced air inlet attenuator
- Induced air filter, construction type
 (Unit Sizes 2-4 15"x15"x1, Unit Sizes 5-7 19"x17"x1")
- Dust tight control enclosure
- Door interlocking disconnect switch:
 - Fused Non-Fused
- Motor fusing
- Manual reset cut out
- Chicago Code
- AC Solid State Relays
- LineaHeat controlled SSR proportional heat
 - Discharge temperature sensor

*Check NEC for unit clearance requirements

UNIT SIZE	INLET SIZE	HP	W	H	RECIRC. AIR		D	DD	DISCHARGE		X	Y	Z
					A	B			F	G			
2	06	1/10	29	15	13	13	5 7/8	4 7/8	11 1/2	11 1/2	7 1/2	6 7/8	1 3/4
2	08	1/10	29	15	13	13	7 7/8	4 7/8	11 1/2	11 1/2	7 1/2	6 7/8	1 3/4
3	08	1/10	29	15	13	13	7 7/8	4 7/8	11 1/2	11 1/2	7 1/2	6 7/8	1 3/4
3	10	1/10	29	15	13	13	9 7/8	4 7/8	11 1/2	11 1/2	7 1/2	6 7/8	1 3/4
4	10	1/4	29	15	13	13	9 7/8	4 7/8	11 1/2	11 1/2	7 1/2	6 7/8	1 3/4
4	12	1/4	29	15	13	13	11 7/8	6 7/8	11 1/2	11 1/2	7 1/2	6 7/8	1 3/4
5	12	1/2	37	17 3/4	17	15 3/4	11 7/8	6 7/8	14	15 1/2	8 7/8	9	1 7/8
5	14	1/2	37	17 3/4	17	15 3/4	13 7/8	6 7/8	14	15 1/2	8 7/8	9	1 7/8
6	14	1/2	37	17 3/4	17	15 3/4	13 7/8	6 7/8	14	15 1/2	8 7/8	9	1 7/8
6	16	1/2	37	17 3/4	17	15 3/4	15 7/8	6 7/8	14	15 1/2	8 7/8	9	1 7/8
7	16	3/4	37	17 3/4	17	15 3/4	15 7/8	6 7/8	14	15 1/2	8 7/8	9	1 7/8