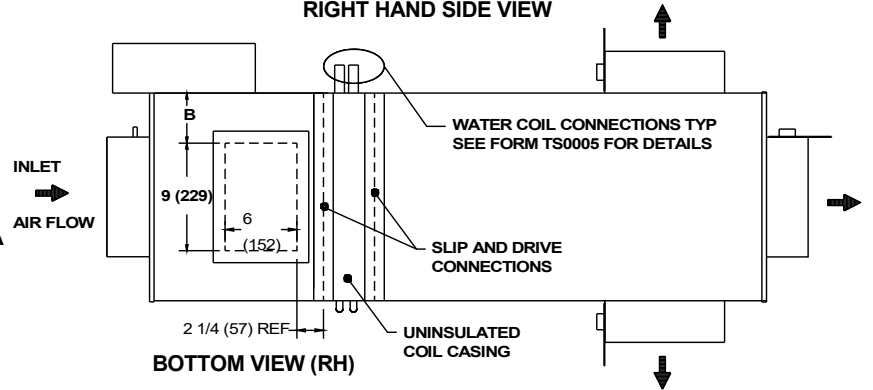
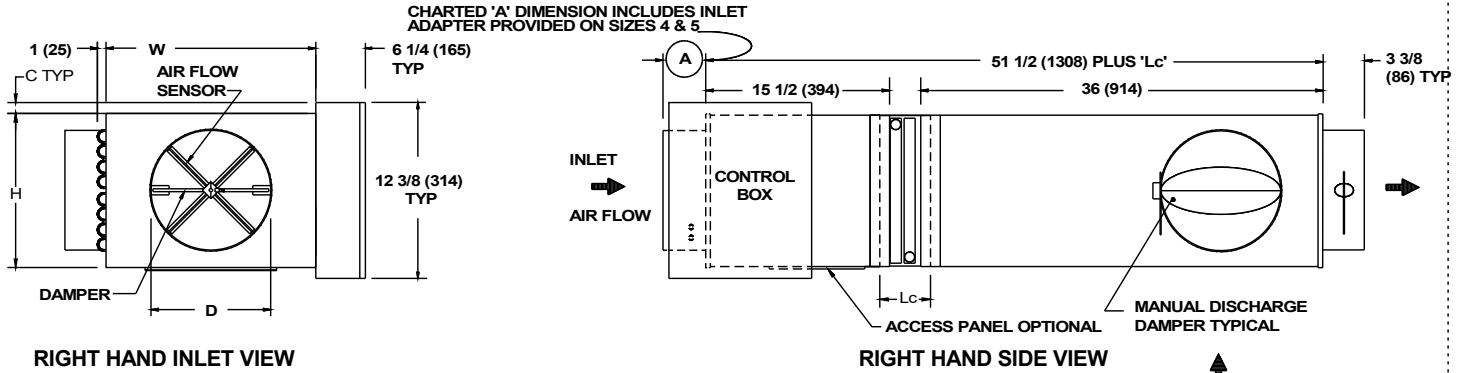


## LMHS

### MULTI OUTLET HOT WATER HEAT - ELECTRONIC CONTROL

## SUBMITTAL SHEET



#### STANDARD FEATURES:

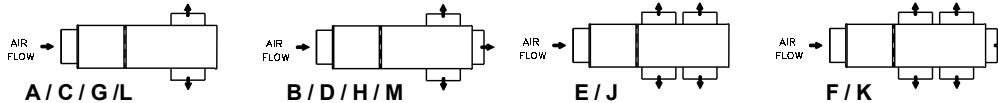
- 22 Ga. Zinc coated steel construction.
- **NEMA 1** steel control enclosure for electric or electronic components
- 1/2" thick dual density fiberglass insulation meeting **NFPA 90A** and **UL 181** safety requirements.
- Four quadrant averaging cross flow sensor
- Variety of analog and digital control packages for pressure independent systems.
- **ETL** listed - Adherence to **UL429** for electrically operated valves
- Left hand and right hand control configurations are available. (right hand shown above)
- Hot water coil connection. (right hand shown above)

#### NOTES :

1. Multiple outlets are not available on size 22.
2. See Form **TS0004** for basic **LMHS** unit information.
3. See Form **TS0003** for additional outlet information.
4. See Form **TS0005** for water coil information

#### DIMENSIONS ARE GIVEN AS INCHES (MM)

#### OPTIONAL OUTLET TYPES



#### OPTIONAL FEATURES:

- 20 Ga. Zinc coated steel construction
- Liners:
  - 1/2" dual density fiberglass
  - 1" dual density fiberglass
  - Perforated double wall 1/2"
  - Perforated double wall 1"
- Linear averaging sensor.
- Disconnect switch for electronic controls
- 24 volt transformer.
- Left hand controls.
- Dust tight control enclosure
- Cam lock bottom access panel
- Left hand water coil connection
- None
- Steriliner
- Sterilwall 1/2"
- Sterilwall 1"
- 1" Cellular - fibre free
- 1/2" Cellular - fibre free
- Right Hand Controls
- Hanger Brackets
- Bottom Access Panel
- Right Hand Water Coil Connection

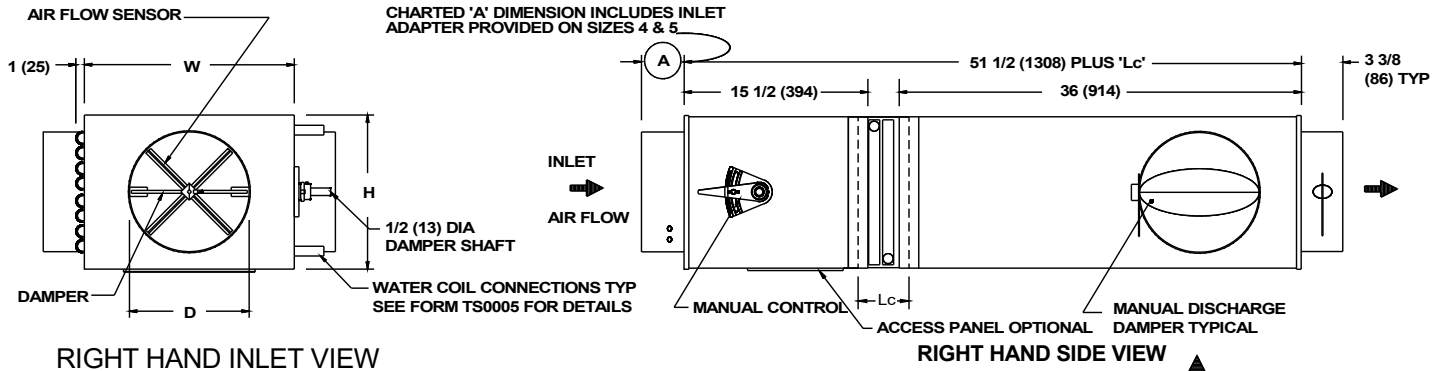
LMHS MULTI-OUTLET UNIT WITH HOT WATER HEAT

| INLET SIZE | NOM MAX CFM (L/s) | W        | H            | A           | B           | C          | D            | Lc              | OUTLET TYPES |
|------------|-------------------|----------|--------------|-------------|-------------|------------|--------------|-----------------|--------------|
| 4          | 230 (109)         | 12 (305) | 8 (203)      | 5 3/8 (136) | 1 1/2 (38)  | 2 1/8 (54) | 3 7/8 (98)   | SEE FORM TS0005 | A/B          |
| 5          | 360 (170)         | 12 (305) | 8 (203)      | 5 3/8 (136) | 1 1/2 (38)  | 2 1/8 (54) | 4 7/8 (124)  |                 | A/B          |
| 6          | 520 (245)         | 12 (305) | 8 (203)      | 3 3/8 (86)  | 1 1/2 (38)  | 2 1/8 (54) | 5 7/8 (149)  |                 | A/B          |
| 7          | 710 (335)         | 12 (305) | 10 (254)     | 3 3/8 (86)  | 1 1/2 (38)  | 1 1/8 (29) | 6 7/8 (175)  |                 | C/D/E        |
| 8          | 925 (437)         | 12 (305) | 10 (254)     | 3 3/8 (86)  | 1 1/2 (38)  | 1 1/8 (29) | 7 7/8 (200)  |                 | C/D/E/F      |
| 9          | 1200 (566)        | 14 (356) | 12 1/2 (318) | 3 3/8 (86)  | 2 1/2 (64)  | -          | 8 7/8 (225)  |                 | D/E/G/H/J    |
| 10         | 1450 (685)        | 14 (356) | 12 1/2 (318) | 3 3/8 (86)  | 2 1/2 (64)  | -          | 9 7/8 (251)  |                 | D/E/G/H/J    |
| 12         | 2100 (991)        | 16 (406) | 15 (381)     | 3 3/8 (86)  | 3 1/2 (89)  | -          | 11 7/8 (302) |                 | H/J/K/L/M    |
| 14         | 2900 (2900)       | 20 (508) | 17 1/2 (445) | 3 3/8 (86)  | 5 1/2 (140) | -          | 13 7/8 (352) |                 | H/J/K/L/M    |
| 16         | 3700 (1746)       | 24 (610) | 18 (457)     | 3 3/8 (86)  | 7 1/2 (191) | -          | 15 7/8 (403) |                 | H/J/K/L/M    |

## LMHS

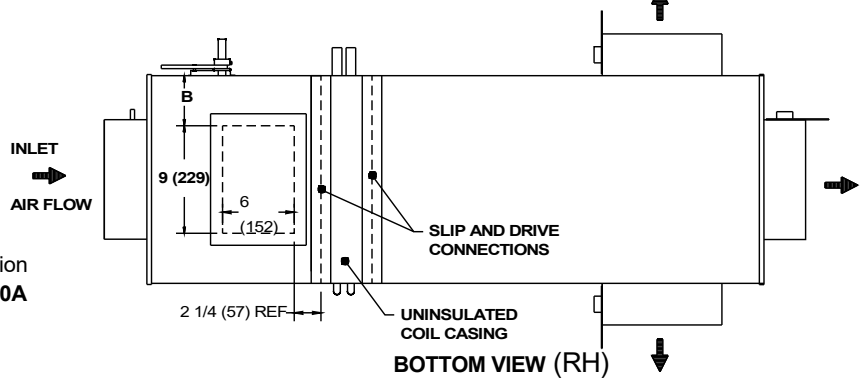
### MULTI OUTLET HOT WATER HEAT - MANUAL CONTROL

## SUBMITTAL SHEET



RIGHT HAND INLET VIEW

RIGHT HAND SIDE VIEW



BOTTOM VIEW (RH)

#### STANDARD FEATURES:

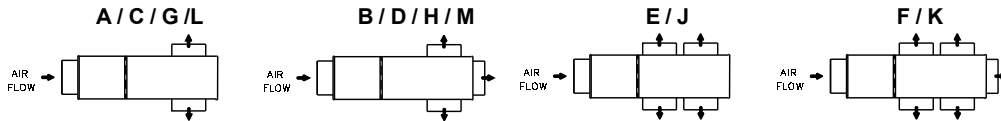
- 22 Ga. Zinc coated steel construction.
- Manual adjusting quadrant for adjustment of damper position
- 1/2" thick dual density fiberglass insulation meets **NFPA 90A** and **UL 181** safety requirements.
- Four quadrant averaging cross flow sensor
- Left hand and right hand control configurations are available. (right hand shown above)
- Hot water coil connection. (right hand shown above)

#### NOTES :

1. Multiple outlets are not available on size 22.
2. See Form **TS0004** for basic **LMHS** unit information.
3. See Form **TS0003** for additional outlet information.
4. See Form **TS0005** for water coil information.

#### DIMENSIONS ARE GIVEN AS INCHES (MM)

#### OPTIONAL OUTLET TYPES



#### OPTIONAL FEATURES:

- 20 Ga. Zinc coated steel construction
- Liners:
  - 1/2" dual density fiberglass
  - 1" dual density fiberglass
  - Perforated double wall 1/2"
  - Perforated double wall 1"
  - 1/2" Cellular - fibre free
- Linear averaging sensor.
- Left hand controls.
- Cam lock bottom access panel
- Left hand water coil connection
- None
- Steriliner
- Sterilwall 1/2"
- Sterilwall 1"
- 1" Cellular - fibre free
- Right Hand Control
- Hanger Brackets
- Bottom Access Panel
- Right Hand Water Coil Connection

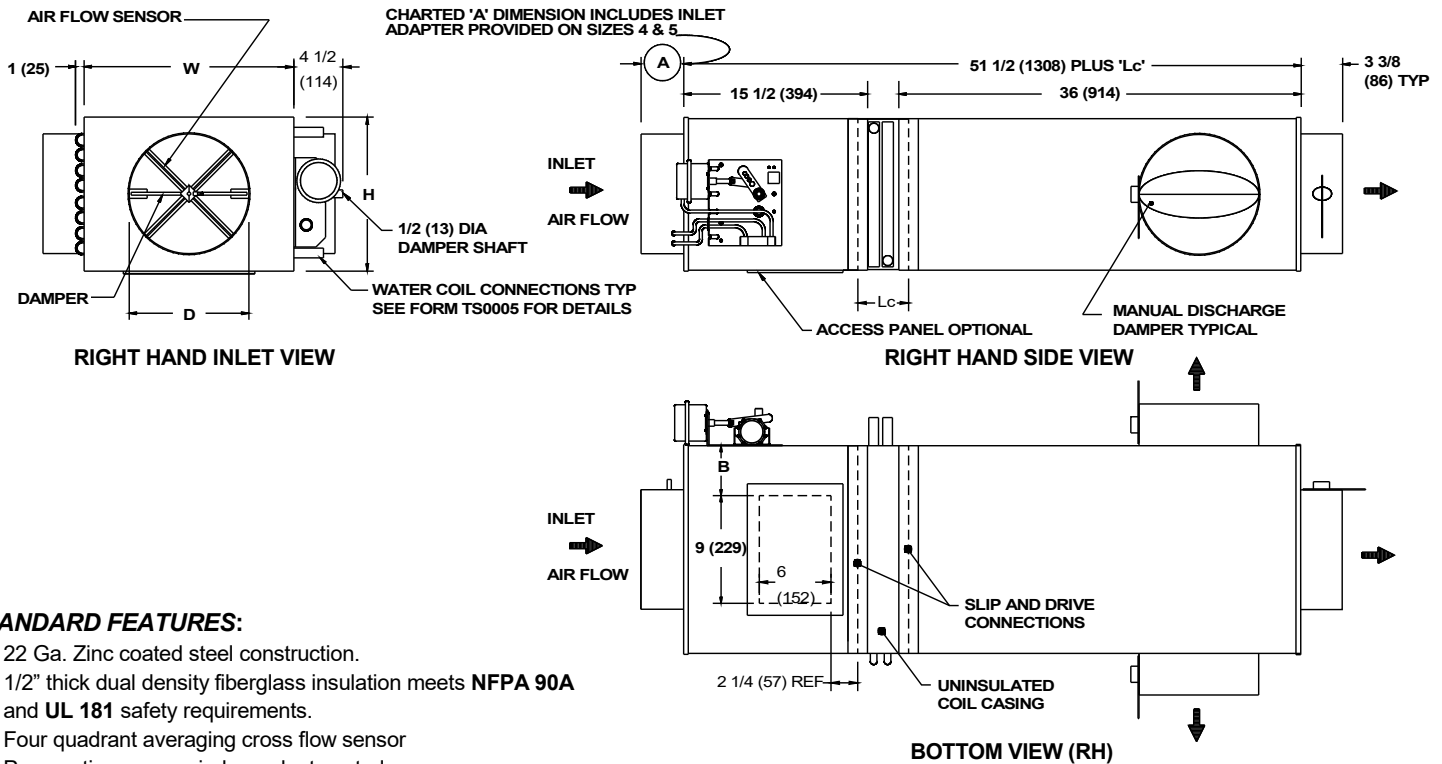
#### LMHS MULTI-OUTLET UNIT WITH HOT WATER HEAT

| INLET SIZE | NOM MAX CFM (L/s) | W        | H            | A           | B           | D            | Lc              | OUTLET TYPES      |
|------------|-------------------|----------|--------------|-------------|-------------|--------------|-----------------|-------------------|
| 4          | 230 (109)         | 12 (305) | 8 (203)      | 5 3/8 (136) | 1 1/2 (38)  | 3 7/8 (98)   | SEE FORM TS0005 | A / B             |
| 5          | 360 (170)         | 12 (305) | 8 (203)      | 5 3/8 (136) | 1 1/2 (38)  | 4 7/8 (124)  |                 | A / B             |
| 6          | 520 (245)         | 12 (305) | 8 (203)      | 3 3/8 (86)  | 1 1/2 (38)  | 5 7/8 (149)  |                 | A / B             |
| 7          | 710 (335)         | 12 (305) | 10 (254)     | 3 3/8 (86)  | 1 1/2 (38)  | 6 7/8 (175)  |                 | C / D / E         |
| 8          | 925 (437)         | 12 (305) | 10 (254)     | 3 3/8 (86)  | 1 1/2 (38)  | 7 7/8 (200)  |                 | C / D / E / F     |
| 9          | 1200 (566)        | 14 (356) | 12 1/2 (318) | 3 3/8 (86)  | 2 1/2 (64)  | 8 7/8 (225)  |                 | D / E / G / H / J |
| 10         | 1450 (685)        | 14 (356) | 12 1/2 (318) | 3 3/8 (86)  | 2 1/2 (64)  | 9 7/8 (251)  |                 | D / E / G / H / J |
| 12         | 2100 (991)        | 16 (406) | 15 (381)     | 3 3/8 (86)  | 3 1/2 (89)  | 11 7/8 (302) |                 | H / J / K / L / M |
| 14         | 2900 (2900)       | 20 (508) | 17 1/2 (445) | 3 3/8 (86)  | 5 1/2 (140) | 13 7/8 (352) |                 | H / J / K / L / M |
| 16         | 3700 (1746)       | 24 (610) | 18 (457)     | 3 3/8 (86)  | 7 1/2 (191) | 15 7/8 (403) |                 | H / J / K / L / M |

## LMHS

### MULTI OUTLET HOT WATER HEAT - PNEUMATIC MULTI-FUNCTION

## SUBMITTAL SHEET



#### STANDARD FEATURES:

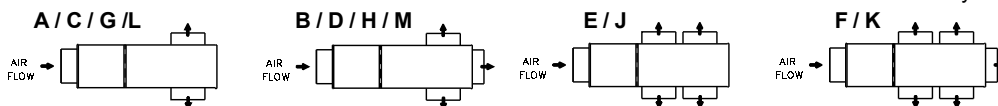
- 22 Ga. Zinc coated steel construction.
- 1/2" thick dual density fiberglass insulation meets **NFPA 90A** and **UL 181** safety requirements.
- Four quadrant averaging cross flow sensor
- Pneumatic pressure independent controls.
- Compressed air consumption : 1.0 scfh @ 20 psig.
- Left hand and right hand control configurations are available. (right hand shown above)
- Hot water coil connection (right hand shown above)

#### NOTES :

1. Multiple outlets are not available on size 22.
2. See Form **TS0004** for basic **LMHS** unit information.
3. See Form **TS0003** for additional outlet information.
4. See Form **TS0005** for water coil information.

#### DIMENSIONS ARE GIVEN AS INCHES (MM)

#### OPTIONAL OUTLET TYPES



#### OPTIONAL FEATURES:

- 20 Ga. Zinc coated steel construction
- Liners:  1/2" dual density fiberglass
- 1" dual density fiberglass
- Perforated double wall 1/2"
- Perforated double wall 1"
- 1/2" Cellular - fibre free
- Linear averaging sensor
- Left hand control
- Direct acting thermostat
- Reverse acting thermostat
- Cam lock bottom access panel
- Left hand water coil connection
- None
- Steriliner
- Sterilwall 1/2"
- Sterilwall 1"
- 1" Cellular - fibre free
- Right Hand Control
- Hanger Brackets
- Bottom Access Panel
- Right Hand Water Coil Connection
- Normally Open Damper
- Normally Closed Damper

LMHS MULTI-OUTLET UNIT WITH HOT WATER HEAT

| INLET SIZE | NOM MAX CFM (L/s) | W        | H            | A           | B           | D            | Lc              | OUTLET TYPES      |
|------------|-------------------|----------|--------------|-------------|-------------|--------------|-----------------|-------------------|
| 4          | 230 (109)         | 12 (305) | 8 (203)      | 5 3/8 (136) | 1 1/2 (38)  | 3 7/8 (98)   | SEE FORM TS0005 | A / B             |
| 5          | 360 (170)         | 12 (305) | 8 (203)      | 5 3/8 (136) | 1 1/2 (38)  | 4 7/8 (124)  |                 | A / B             |
| 6          | 520 (245)         | 12 (305) | 8 (203)      | 3 3/8 (86)  | 1 1/2 (38)  | 5 7/8 (149)  |                 | A / B             |
| 7          | 710 (335)         | 12 (305) | 10 (254)     | 3 3/8 (86)  | 1 1/2 (38)  | 6 7/8 (175)  |                 | C / D / E         |
| 8          | 925 (437)         | 12 (305) | 10 (254)     | 3 3/8 (86)  | 1 1/2 (38)  | 7 7/8 (200)  |                 | C / D / E / F     |
| 9          | 1200 (566)        | 14 (356) | 12 1/2 (318) | 3 3/8 (86)  | 2 1/2 (64)  | 8 7/8 (225)  |                 | D / E / G / H / J |
| 10         | 1450 (685)        | 14 (356) | 12 1/2 (318) | 3 3/8 (86)  | 2 1/2 (64)  | 9 7/8 (251)  |                 | D / E / G / H / J |
| 12         | 2100 (991)        | 16 (406) | 15 (381)     | 3 3/8 (86)  | 3 1/2 (89)  | 11 7/8 (302) |                 | H / J / K / L / M |
| 14         | 2900 (2900)       | 20 (508) | 17 1/2 (445) | 3 3/8 (86)  | 5 1/2 (140) | 13 7/8 (352) |                 | H / J / K / L / M |
| 16         | 3700 (1746)       | 24 (610) | 18 (457)     | 3 3/8 (86)  | 7 1/2 (191) | 15 7/8 (403) |                 | H / J / K / L / M |