

KBVD External Space Requirements

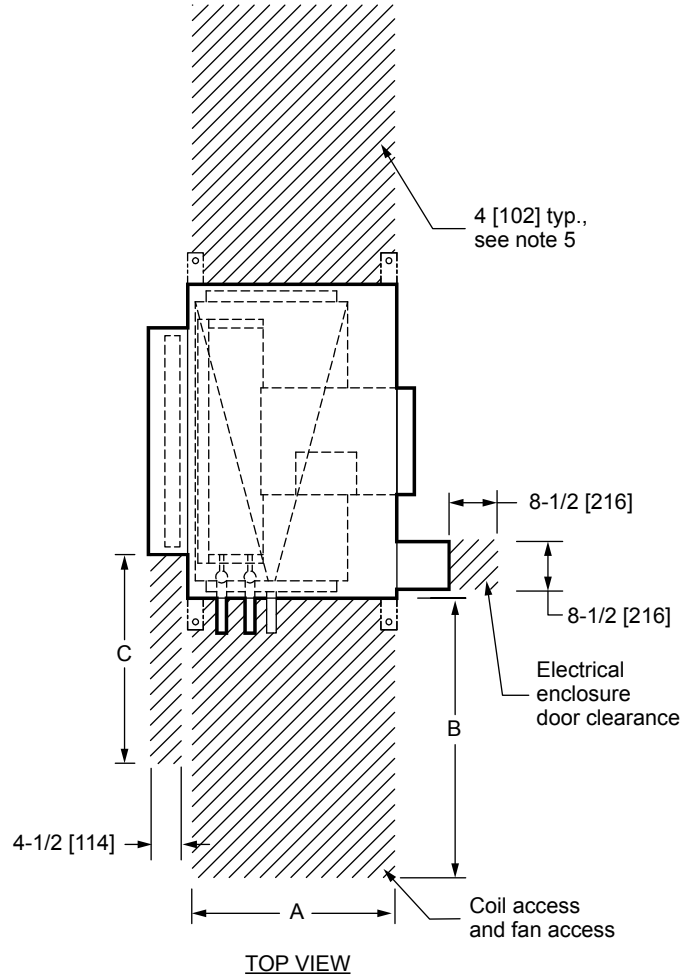
DIRECT DRIVE BLOWER COIL UNIT
EXTERNAL SPACE REQUIREMENT

JOB NAME _____
ENGINEER _____
CONTRACTOR _____
TAG _____

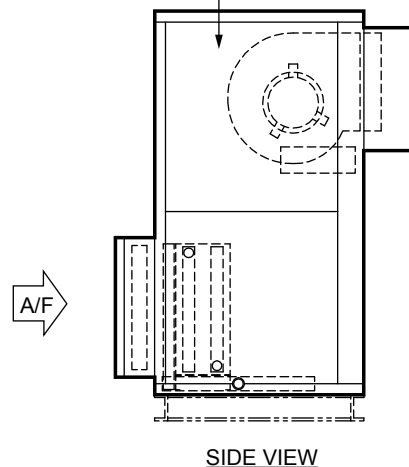
SUBMITTAL SHEET

NOTES:

- All dimensions are in Inches [millimeters].
All dimensions are $\pm 1/4"$ [6mm]. Metric values are soft conversion.
- Right hand unit shown, Left hand unit opposite. Motor/drive location may be specified Left or Right Hand. Standard control enclosure location matches motor/drive position.
- Provide sufficient clearance to permit access to controls and comply with applicable codes and ordinances.
- Flat filter rack may be located at unit inlet as required. See drawing BCS-KBOD-ACFR0 for filter rack details.
- Dual Blower units require service access to both side access panels for motor/blower removal.



5/8 [16] dia. mounting holes typ. (4) PLCS. see note 5



UNIT SIZE	A	B	C
08	19 [483]	30 [762]	20 [508]
12	19 [483]	36 [914]	25 [635]
16	19 [483]	44 [1118]	20 [508]
40	25 [635]	50 [1270]	20 [508]
30	25 [635]	59 [1499]	20 [508]
40	25 [635]	68 [1727]	20 [508]