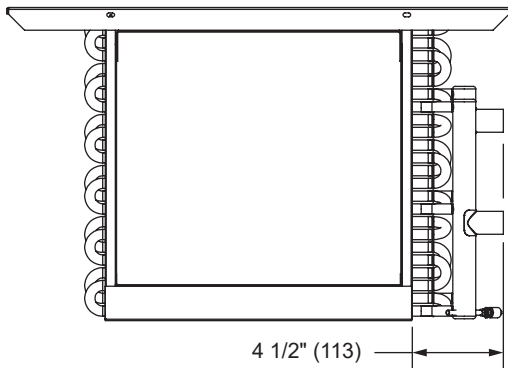
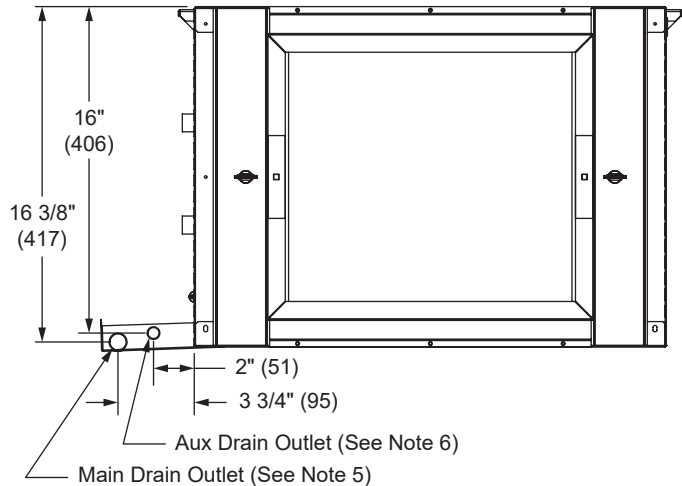


2-PIPE - SIDE VIEW
LH SHOWN RH OPPOSITE



2-PIPE - FRONT VIEW
LH SHOWN RH OPPOSITE

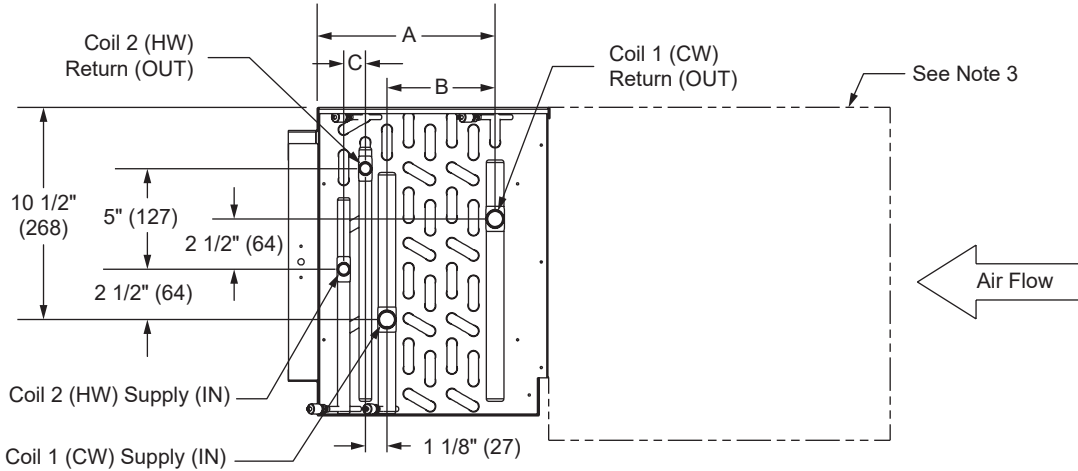


DRAIN LOCATIONS - BACK VIEW
LH SHOWN RH OPPOSITE

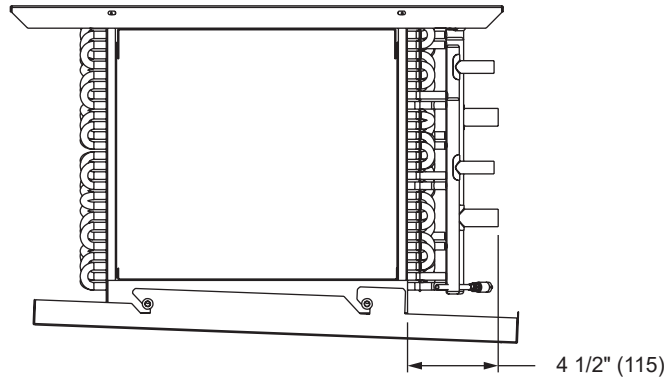
Unit Type	Coil Rows	A (1/2" Ø Coil)	A (3/8" Ø Coil)
2 Pipe Heating	1	1-1/8" (29)	7/8" (22)
	2	1-1/8" (29)	7/8" (22)
	3	2-1/8" (54)	1-3/4" (44)
	4	3-1/4" (83)	2-5/8" (67)
2 Pipe Cooling	3	2-1/8" (54)	1-3/4" (44)
	4	3-1/4" (83)	2-5/8" (67)
	6	5-3/8" (137)	4-3/8" (86)

NOTES:

- All dimensions are inches (millimeters) All dimensions 1/2 (13mm). Metric values are soft conversion.
- All drawings subject to change without notice.
- Model "KHGP" unit shown, typical for model "KHGH" units. Connections shown are internal on "KHGE" units.
- Connection Size: See 82-80053 Coil Connections.
- Standard externally foam coated galvanize steel drain pan has 7/8" ODM copper outlet. Stainless steel drain pan has 3/4" MPT galvanize steel outlet.
- Aux. drain outlet is 5/8" ODM copper or 3/8" MPT galvanized steel respectively.
- Single Row/Single Circuit headers are vertical (Horizontal Distance is 0")



4-PIPE - SIDE VIEW
LH SHOWN RH OPPOSITE

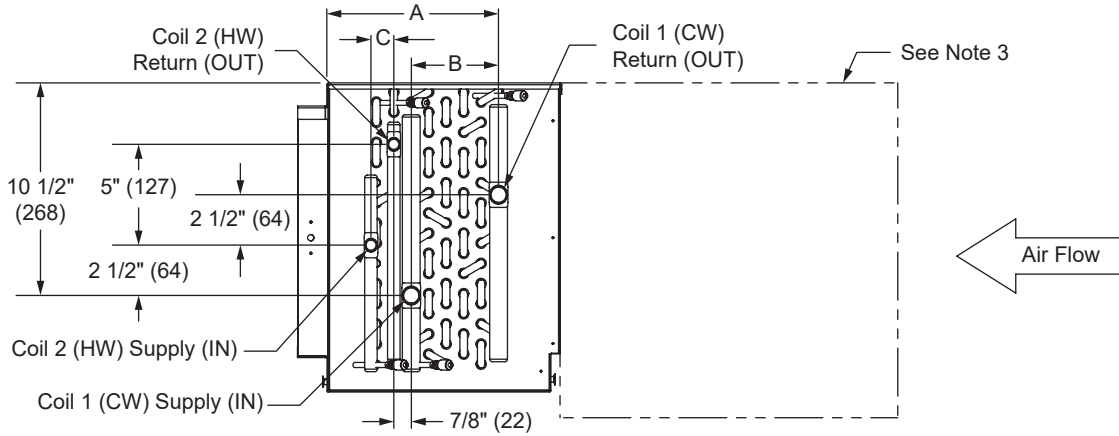


4-PIPE - FRONT VIEW
LH SHOWN RH OPPOSITE

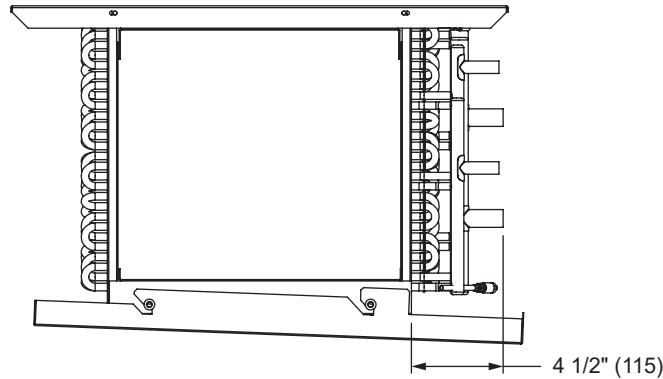
Unit Type: 4 Pipe Re-Heat				
Coil 1 CW Rows	Coil 2 HW Rows	1/2" Coil Ø		
		A	B	C
3	1	6-3/4" (171)	1-5/8" (143)	1-1/4" (32) \triangle
3	2	6-3/4" (171)	1-7/8" (48)	1-1/8" (29)
3	3	6-3/4" (171)	2" (51)	2-1/4" (57)
4	1	6-3/4" (171)	3" (76)	1-1/4" (32) \triangle
4	2	6-3/4" (171)	3" (76)	1-1/8" (29)
3	4	8-7/8" (225)	2" (51)	3-1/4" (83)
4	3	8-7/8" (225)	3-1/4" (83)	2" (51)
4	4	8-7/8" (225)	3-1/4" (83)	3-1/4" (83)
6	1	8-7/8" (225)	5" (127)	1-1/8" (29) \triangle
6	2	8-7/8" (225)	5-1/4" (133)	1-1/8" (29)

NOTES:

1. All dimensions are inches (millimeters) All dimensions 1/2 (13mm). Metric values are soft conversion.
2. All drawings subject to change without notice.
3. Model "KHGP" unit shown, typical for model "KHGH" units. Connections shown are internal on "KHGE" units.
4. Connection Size: See 82-80053 Coil Connections.
5. Standard externally foam coated galvanize steel drain pan has 7/8" ODM copper outlet. Stainless steel drain pan has 3/4" MPT galvanize steel outlet.
6. Aux. drain outlet is 5/8" ODM copper or 3/8" MPT galvanized steel respectively.
7. Single Row/Single Circuit headers are vertical (Horizontal Distance is 0")



4-PIPE - SIDE VIEW
LH SHOWN RH OPPOSITE

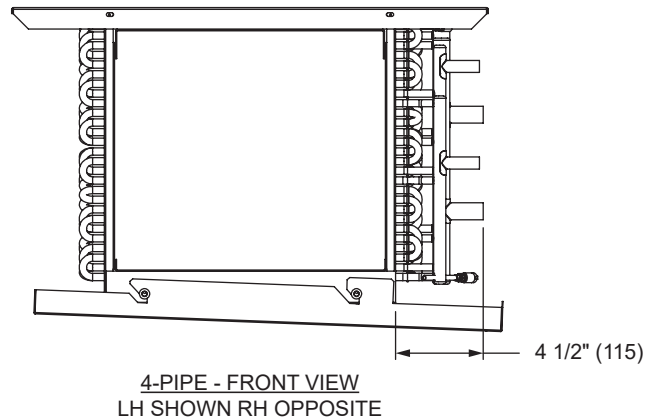
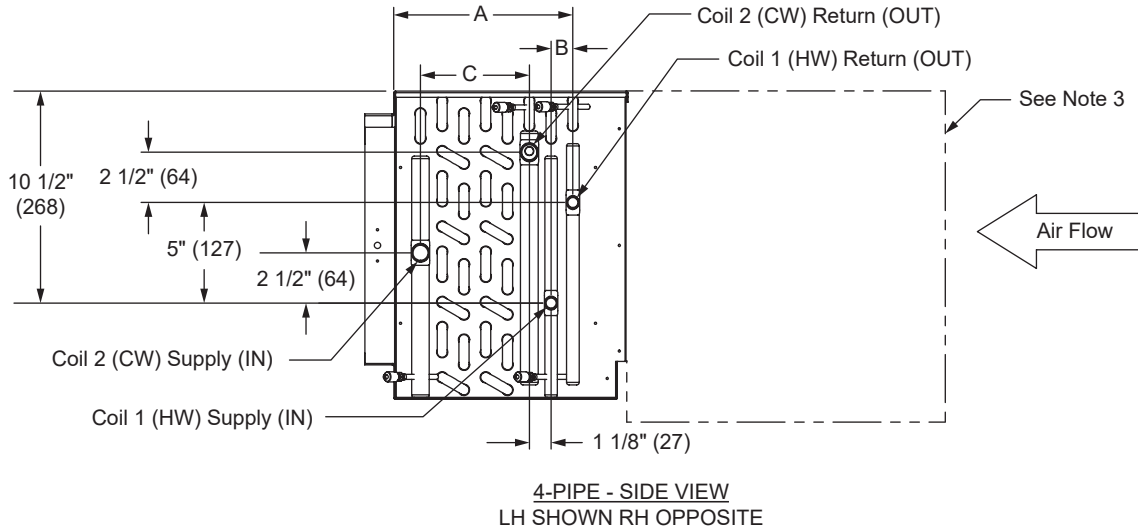


4-PIPE - FRONT VIEW
LH SHOWN RH OPPOSITE

Unit Type: 4 Pipe Re-Heat				
Coil 1 CW Rows	Coil 2 HW Rows	3/8" Coil Ø		
		A	B	C
3	1	6-3/4" (171)	1-1/2" (38)	1" (25) \triangle
3	2	6-3/4" (171)	1-3/8" (35)	1" (25)
3	3	6-3/4" (171)	1-3/4" (44)	1-1/2" (38)
4	1	6-3/4" (171)	1-3/4" (44)	1" (25) \triangle
4	2	6-3/4" (171)	2-1/4" (57)	1" (25)
3	4	8-1/2" (216)	1-1/2" (38)	2-5/8" (67)
4	3	8-1/2" (216)	2-5/8" (67)	1-1/2" (38)
4	4	8-1/2" (216)	2-5/8" (67)	2-1/4" (57)
6	1	8-1/2" (216)	3-1/2" (89)	1" (25) \triangle
6	2	8-1/2" (216)	4" (102)	1" (25)

NOTES:

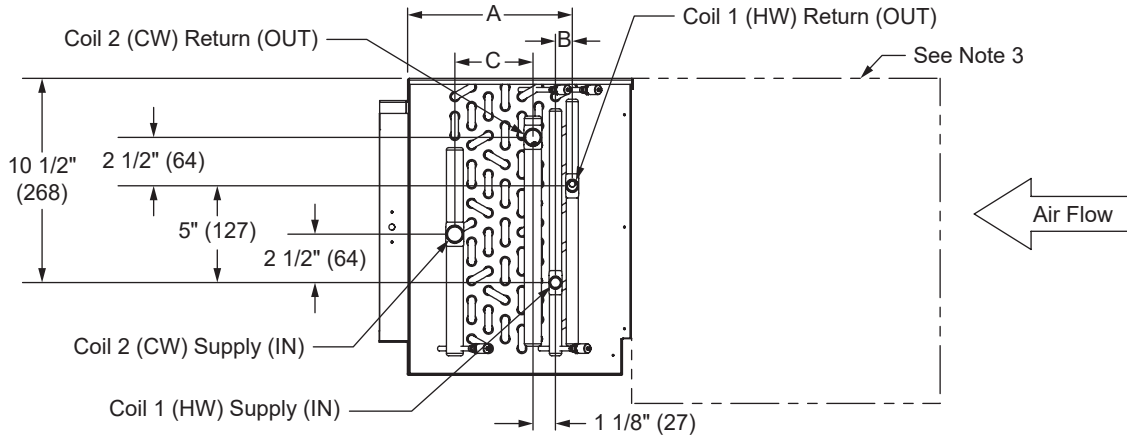
1. All dimensions are inches (millimeters) All dimensions 1/2 (13mm). Metric values are soft conversion.
2. All drawings subject to change without notice.
3. Model "KHGP" unit shown, typical for model "KHGH" units. Connections shown are internal on "KHGR" units.
4. Connection Size: See 82-80053 Coil Connections.
5. Standard externally foam coated galvanize steel drain pan has 7/8" ODM copper outlet. Stainless steel drain pan has 3/4" MPT galvanize steel outlet.
6. Aux. drain outlet is 5/8" ODM copper or 3/8" MPT galvanized steel respectively.
7. Single Row/Single Circuit headers are vertical (Horizontal Distance is 0")



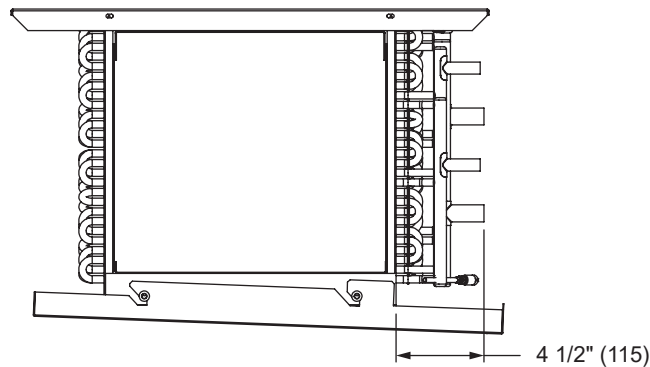
Unit Type: 4 Pipe Pre-Heat				
Coil 1 HW Rows	Coil 2 CW Rows	1/2" Coil Ø		
		A	B	C
1	3	7-5/8" (194)	1-1/8" (29) \triangle	1-5/8" (41)
1	4	7-5/8" (194)	1-1/8" (29) \triangle	2-1/2" (64)
2	3	6-3/4" (171)	1-1/8" (29)	2-1/8" (54)
2	4	6-3/4" (171)	1-1/8" (29)	3-1/8" (79)
3	3	6-3/4" (171)	2-1/8" (54)	2" (51)
1	6	9-5/8" (244)	1-1/8" (29) \triangle	4-3/4" (121)
2	6	8-7/8" (225)	1-1/8" (29)	5-1/4" (133)
3	4	8-7/8" (225)	2-1/8" (54)	3-1/8" (79)
4	3	8-7/8" (225)	3-1/4" (83)	2-1/8" (54)
4	4	8-7/8" (225)	3-1/4" (83)	3-1/8" (79)

NOTES:

1. All dimensions are inches (millimeters) All dimensions 1/2 (13mm). Metric values are soft conversion.
2. All drawings subject to change without notice.
3. Model "KHGP" unit shown, typical for model "KHGH" units. Connections shown are internal on "KHGE" units.
4. Connection Size: See 82-80053 Coil Connections.
5. Standard externally foam coated galvanize steel drain pan has 7/8" ODM copper outlet. Stainless steel drain pan has 3/4" MPT galvanize steel outlet.
6. Aux. drain outlet is 5/8" ODM copper or 3/8" MPT galvanized steel respectively.
7. Single Row/Single Circuit headers are vertical (Horizontal Distance is 0")



4-PIPE - SIDE VIEW
LH SHOWN RH OPPOSITE



4-PIPE - FRONT VIEW
LH SHOWN RH OPPOSITE

Unit Type: 4 Pipe Pre-Heat				
Coil 1 HW Rows	Coil 2 CW Rows	3/8" Coil Ø		
		A	B	C
1	3	7-1/2" (191)	1" (25)	1-1/2" (38)
1	4	7-1/2" (191)	1" (25)	1-3/4" (44)
2	3	6-3/4" (171)	1" (25)	1-1/2" (38)
2	4	6-3/4" (171)	1" (25)	2" (51)
3	3	6-3/4" (171)	1-3/4" (XX)	1-1/2" (38)
1	6	9-1/4" (235)	1" (25)	3-1/2" (89)
2	6	8-1/2" (216)	1" (25)	3-3/4" (95)
3	4	8-1/2" (216)	1-3/4" (44)	2-1/4" (57)
4	3	8-1/2" (216)	2-5/8" (67)	1-1/2" (38)
4	4	8-1/2" (216)	2-5/8" (67)	2-1/4" (57)

NOTES:

1. All dimensions are inches (millimeters) All dimensions 1/2 (13mm). Metric values are soft conversion.
2. All drawings subject to change without notice.
3. Model "KHGP" unit shown, typical for model "KHGH" units. Connections shown are internal on "KHGE" units.
4. Connection Size: See 82-80053 Coil Connections.
5. Standard externally foam coated galvanize steel drain pan has 7/8" ODM copper outlet. Stainless steel drain pan has 3/4" MPT galvanize steel outlet.
6. Aux. drain outlet is 5/8" ODM copper or 3/8" MPT galvanized steel respectively.
7. Single Row/Single Circuit headers are vertical (Horizontal Distance is 0")