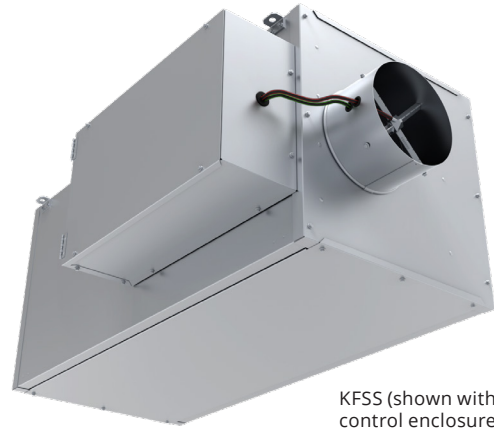


INTRODUCTION

Building designs are adapting and changing to an ever-growing list of demands, including sound performance, energy efficiency, and space constraints. Krueger's KFSS Select, ultra-quiet series fan powered terminal unit, is an excellent solution to address these concerns.

But to understand the importance of this solution, it's best to first understand the overall goal of a series fan powered unit, which is to sustain optimum occupant comfort levels by maintaining an adequate supply of air to the conditioned zone. It works by way of a recirculation fan, which draws cold air from the primary air duct and warm air from the return plenum in proportional amounts to satisfy zone temperature requirements. The warm and cold air then blend in the unit before moving into the discharge plenum.



KFSS (shown with standard control enclosure)

Typically, fan powered unit designs have larger footprints. That's where the KFSS Select is different. Its slim design allows it to fit into tighter ceiling spaces, meaning that it may be placed more often where needed, instead of being constrained to less desirable locations. As a result, this may provide an opportunity to improve occupant comfort by allowing the unit to be placed further away from occupants, which would reduce the noise heard within the space. And to take it a step further, the unit's optional enclosures and field adjustable handing may allow you to better adapt to unforeseen job site limitations, all while maintaining NEC clearance requirements.

The KFSS Select also features a durable, 20 gage galvanized steel construction as well as high efficiency, multi-voltage EC motors. These motors, along with the blower and primary air damper components are easily accessible from the top or bottom of the unit, facilitating maintenance.

And to round it off, all KFSS Select units are ETL listed and AHRI certified. Complete with several types of controls, casing liners, reheat options and other accessories to choose from, we are confident that there is a unit configuration to meet your job specification.

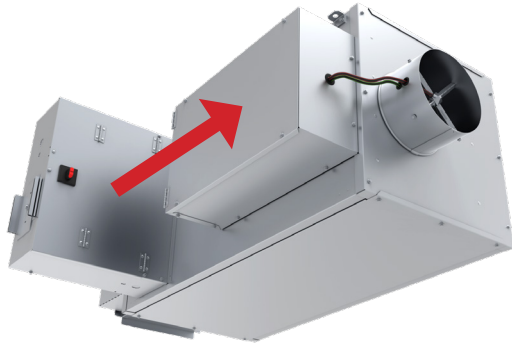
MODEL

KFSS Select -Ultra Quiet, Series Fan Powered Terminal Unit

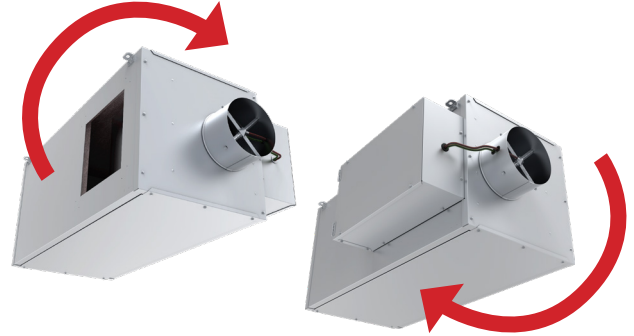
FEATURES

- Ultra quiet operation for critical sound applications
- Airflow capacities up to 3960 CFM, providing airflow control for commercial applications
- 20 gage galvanized steel casing construction provides advantages in acoustics, quality, unit strength, and product durability.
- Several types of casing liner options provide quiet and clean operation
- Round inlet sizes ranging from 6" - 16" diameter are sized to fit standard spiral/flex duct for quick installation
- Each unit size offers multiple primary inlet sizes to allow for flexible system design
- Fully removable top and bottom access panel included with each unit for easy access to internal components for maintenance
- Control enclosure located on left-hand or right-hand side for easier installation
- 90° facing, bottom facing, and remote mounted high voltage enclosure options allow the KFSS to be installed in tight ceiling spaces while maintaining NEC clearance
- Single point electrical connection minimizes the number of ceiling plenum electrical connections
- Multi-voltage EC (electronically commutated) motors are quiet, reliable, and energy efficient
- Electronic manual or analog controlled speed controller allows field adjustable fan airflow
- Various external filter options are available to meet IAQ needs
- Reheat coils offered in a wide range of options, including staged electric, proportional electric, and hot water heat
- Pneumatic, and digital controls may be customized for many building systems; BACnet/BMS compatible digital controls can be provided by Krueger
- LineaHeat solid state electronic proportional control of electric heat is available with or without leaving air temperature control
- AC solid state relays offer silent operation for staged electric heat
- ETL listings under UL 1995 electrical safety
- AHRI listings are certified in accordance with AHRI 880 testing standard
- Find Revit models at www.krueger-hvac.com/revit

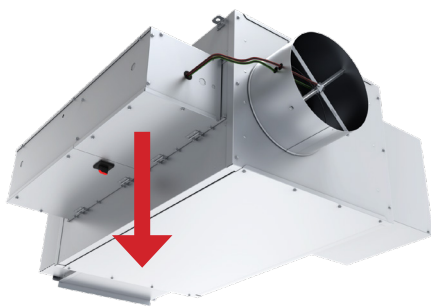
CONSTRUCTION HIGHLIGHTS



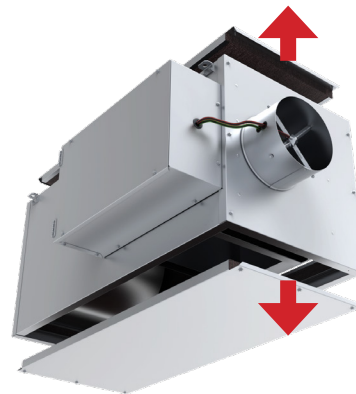
**90° FACING
CONTROL ENCLOSURE**



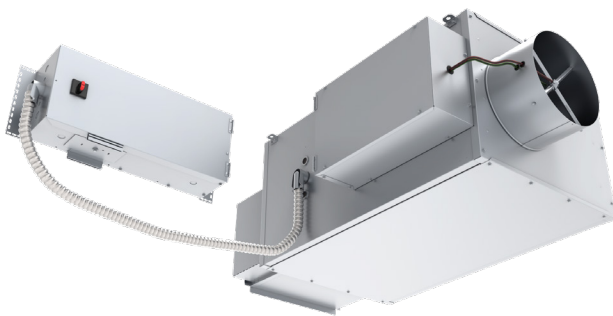
**FIELD REVERSIBLE
CONTROL HANDING**



**BOTTOM FACING
CONTROL ENCLOSURE**



**REMOVABLE PANELS
(CAM LOCKS OPTIONAL)**



**4ft REMOTE MOUNTED
CONTROL ENCLOSURE**



**MERV 8 / MERV 13
FILTER OPTIONS**

TERMINAL UNITS | FAN POWERED