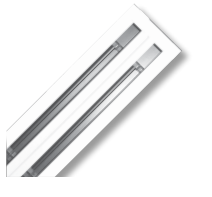


DIFFUSERS



Architectural Diffusers

Square ceiling diffusers that feature clean lines and unique aesthetics. Includes plaque-faced, swirl-faced, and thermal VAV types.



Linear Slot Diffusers

Linear diffusers that integrate seamlessly into their surroundings. Includes options for slots, widths, lengths, and endcaps.



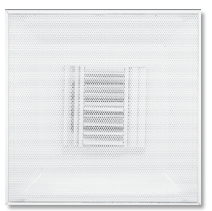
Louvered Face Diffusers

Square ceiling diffusers that feature louvered cones. Includes options for center downblow, pattern controllers, and center plaques.



Modular Core Diffusers

Square ceiling diffusers that feature fixed and removable cores. Includes options with and without perforated faces.



Perforated Face Diffusers

Square ceiling diffusers that feature perforated faces to provide the appearance of an unbroken ceiling plane. Includes options with different pattern deflectors.



Plenum Slot Diffusers

Linear type diffusers that feature integral plenums to simplify installation. Includes options for fixed and adjustable blades.



Round Diffusers

Round ceiling diffusers that feature a clean, round shape. Includes options with adjustable discharge patterns, cone construction, and plaque faces.



Air Nozzles

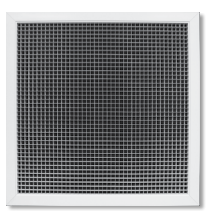
Air devices that feature concentric ring and punkah construction to provide spot cooling or heating.

GRILLES & REGISTERS



Supply Grilles

Wall or ceiling mount supply grilles that feature a variety of blades and blade spacing. Includes options for adjustability and deflection.



Return Grilles

Wall or ceiling mount grilles that return exhausted air. Includes options for blade spacing, perforated faces, frames, and reducing plenum visibility.



Linear Bar Grilles

Grilles for supply or return applications that feature clean lines for single unit installation or long continuous runs. Includes options for bar width and spacing.



Industrial Grilles

Grilles for supply or return industrial applications that feature high volume capabilities. Includes options for blade type and adjustability.



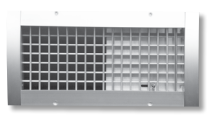
Security Grilles

Grilles for supply or return security-related applications that feature heavy duty construction. Includes options to meet different levels of security needs.



Transfer Grilles

Grilles for supply or return applications that limit visibility through spaces, such as doors. Includes options for different frames.



Duct Mounted Grilles

Grilles for supply applications that feature curved or universal endcaps for duct mounting. Includes options for horizontal blade, vertical blade, or perforated faces.

DISPLACEMENT VENTILATION



Ceiling Displacement Diffusers

Ceiling mounted diffusers that feature low velocity supply air for lay-in tee-bar applications.



Flat Displacement Diffusers

Flat diffusers that feature low velocity supply air. Includes options for standalone or wall mounted applications and varying degrees of discharge patterns.



Round Displacement Diffusers

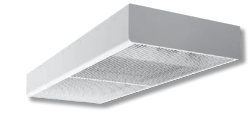
Rounded diffusers that feature low velocity supply air. Includes options for different rounded shapes and varying degrees of discharge patterns.

CHILLED BEAMS



Active Chilled Beams

Chilled beams that require a primary air supply. Includes options for high capacity, heating, and different installation methods.



Passive Chilled Beams

Chilled beams that do not require a primary air supply. Includes options for flush or below ceiling installation.

CRITICAL ENVIRONMENT



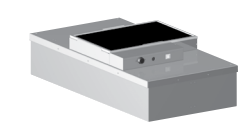
Laminar Flow Diffusers

Low velocity, non-aspirating supply diffusers that feature a downward air pattern and are commonly used in hospital operating room applications. Includes options for lights, filters, baffles, and dampers.



Radial Flow Diffusers

Supply diffusers for critical environment applications that feature a radial air distribution pattern. Includes options for flush ceiling and drop face construction.



Fan Filter Units

Supply units for applications that demand the highest level of cleanliness. Includes options for filters and accessibility.



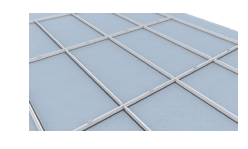
Air Cleaners

Units to exhaust or recirculate clean HEPA filtered air. Includes options for filter types, bipolar ionization, and UV lights.



Air Curtain Systems

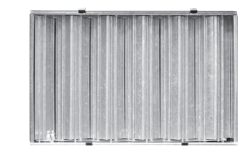
A continuous supply air system that works with laminar flow diffusers to reduce the number of air particulates in the surgical space. Includes custom drawings.



Heavy Duty Ceiling Grids

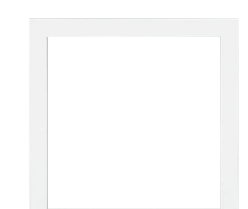
Extruded aluminum ceiling grid suspension system that is designed to support a variety of critical ceiling components for critical environments.

ACCESSORIES



Dampers

Devices to better control or regulate airflow. Includes options for square, rectangular, round, and cable operated types.



Frames

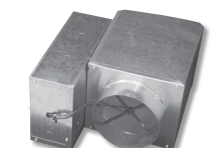
Items to facilitate diffuser and grille installation to different ceiling types, such as lay-in tee-bar and hard ceilings. Includes options for aluminum and steel construction.



Miscellaneous

Items to facilitate mounting and directional airflow. Includes options for blank-off strips, straightening grids, duct extractors, and duct adapters.

TERMINAL UNITS



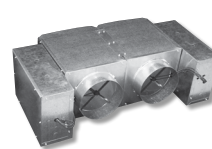
Single Duct Terminal Units

Units that provide a compact design, providing flexibility in a variety of commercial applications. Includes options for electric and hot water reheat.



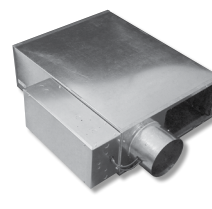
Single Duct Attenuator

An accessory for single duct terminal units to improve acoustical performance. Includes options for shorter and longer lengths.



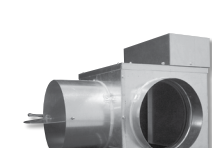
Dual Duct Terminal Units

Units that are designed for dual ducted systems. Includes options for mixing and non-mixing applications.



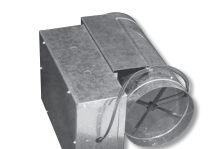
Fan Powered Terminal Units

Units that are designed to maintain optimum temperatures in the conditioned zone. Includes options for reheat and are available in series or parallel configurations.



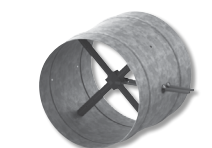
Bypass Terminal Units

Units that maintain optimum occupant comfort by varying the amount of cold air from the constant volume air handler.



Retrofit Terminal Units

Units that convert a mechanical terminal unit into a VAV terminal unit. Includes options for slide-in installation.



Retrofit Measuring Station

Item that is designed to accurately measure airflow with a linear or four-quadrant multi-point differential pressure sensor.



Smart Equipment

Controls and thermostats that are available with Krueger's terminal units for standalone or BACnet applications. Includes options for thermostat displays.

FAN COIL UNITS



Standard Horizontal Fan Coil Units

Supply units that are for applications where floor space is limited and temperature control is necessary. Includes options for different mounting methods.



Horizontal High Capacity Fan Coil Units

Supply units that are for applications where there are large or multiple spaces. Includes options for different mounting methods.



Vertical Standard Fan Coil Units

Supply units that are for applications where there is a ceiling plenum or height limitation. Includes options for different mounting methods.



Vertical Stack Fan Coil Units

Supply units that are for high-rise or condominium applications. Includes options for standalone or connected arrangements.

BLOWER COIL UNITS



Standard Blower Coil Units

Units that are belt or direct driven and offer typical horizontal and vertical arrangements. Includes options for water, refrigerant, and steam coils.



Modular Blower Coil Units

Units that offer a high level of customization. Includes options for draw thru applications in horizontal, vertical, and footprint-saving arrangements.



Small Footprint Blower Coil Units

Units that are belt driven and offer comfort cooling and heating within a small footprint. Includes options for rear and bottom return.