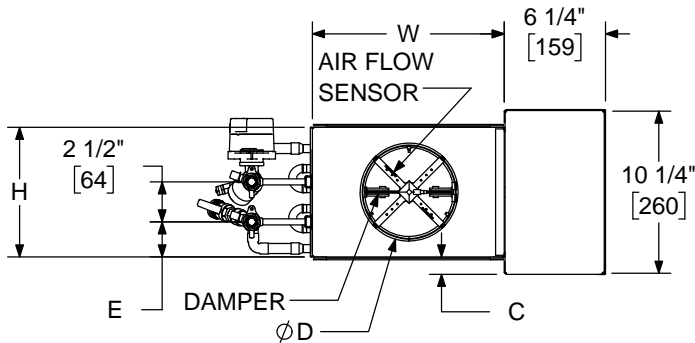


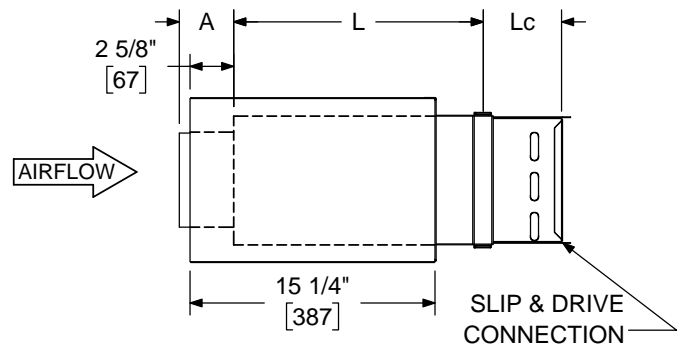
## LMHS-VP

### LOW PROFILE SINGLE DUCT TERMINAL UNIT WITH HOT WATER COIL AND VALVE PACKAGE, ELECTRIC CONTROLS

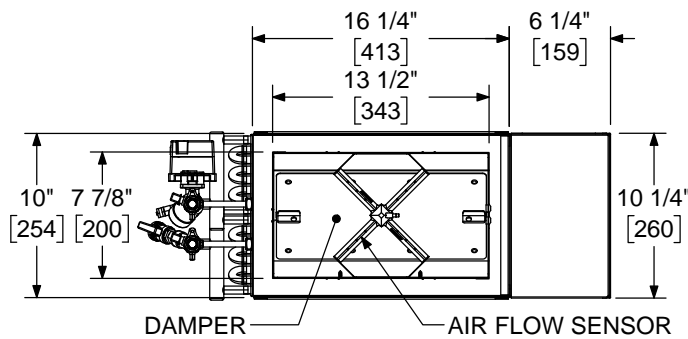
## SUBMITTAL SHEET



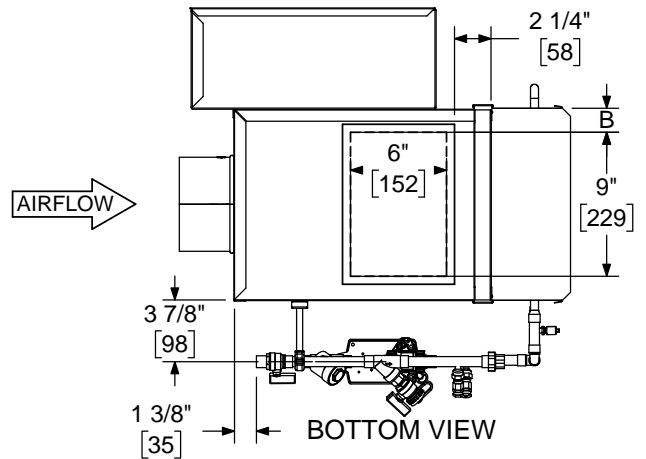
INLET VIEW - SIZES 4-8



SIDE VIEW



INLET VIEW - SIZE 20



BOTTOM VIEW

#### STANDARD FEATURES:

- 22 Ga. Zinc coated steel construction.
- 1/2" dia shaft extending from the unit casing .
- 1/2" thick dual density fiberglass insulation meeting **NFPA 90A** and **UL 181** safety requirements.
- Four quadrant averaging flow sensor.
- Hot water coils. See form TUS33-ACC-WH00 for dimensions and specifications
- AHRI 880 certified sound ratings
- 2-way and 3-way valve package available. See form TUS33-ACC-00001 & TUS33-ACC-00002

#### OPTIONAL FEATURES:

- Liners:
  - 1" dual density fiberglass
  - 1/2" Cellular insulation
  - 1" Cellular insulation
  - Sterilwall w/ 1" fiberglass
  - Perf. Double Wall w/ 1" fiberglass
  - Steriliner
  - None
- 20 Ga. Zinc coated steel construction
- Linear averaging sensor
- 24 Volt transformer
- Disconnect switch for electronic controls.
- Dust tight control enclosure.
- 2-Way valve package
- 3-Way valve package
- Left hand control
- Right hand control
- Bottom access panel (not size 22)
- Cam lock bottom access panel
- Hanger brackets

**NOTE:** Right hand control configuration shown, left hand available. Coil connection is always opposite of control handing.

#### DIMENSIONS ARE GIVEN AS INCHES [MM]

INLET SIZE	NOM MAX CFM [L/s]	L	W	H	A	B	C	D	E	Lc
4	230 [109]	15 1/2 [394]	12 [305]	8 [203]	5 3/8 [136]	1 1/2 [38]	1 1/8 [29]	3 7/8 [98]	2 3/16 [56]	SEE SUBMITTAL TUS33- ACC- WH00
5	360 [170]	15 1/2 [394]	12 [305]	8 [203]	5 3/8 [136]	1 1/2 [38]	1 1/8 [29]	4 7/8 [124]	2 3/16 [56]	
6	515 [243]	15 1/2 [394]	12 [305]	8 [203]	3 3/8 [86]	1 1/2 [38]	1 1/8 [29]	5 7/8 [149]	2 3/16 [56]	
7	700 [330]	15 1/2 [394]	12 [305]	10 [254]	3 3/8 [86]	1 1/2 [38]	1/8 [3]	6 7/8 [175]	3 3/16 [82]	
8	920 [434]	15 1/2 [394]	12 [305]	10 [254]	3 3/8 [86]	1 1/2 [38]	1/8 [3]	7 7/8 [200]	3 3/16 [82]	
20	2100 [991]	15 1/2 [394]	16 1/4 [406]	10 [254]	2 7/8 [73]	3 5/8 [92]	1/8 [3]	N/A	3 3/16 [82]	