

MODEL

- LMHS - Single duct terminal unit

FEATURES

- 20 or 22 gauge casing construction
- Pneumatic, analog, or direct digital controls
- Attenuated units available for critical, low sound applications
- Low profile units available; max height is 10 1/4"

LINERS

- Dual Density Fiberglass - 1/2" or 1" thick
- Cellular - Fiber free, 1/2" or 1" thick
- Steriliner - Foil faced duct board, 13/16" thick
- Sterilwall - Solid double wall with 1/2" or 1" thick dual density fiberglass
- Perforated double wall with 1/2" or 1" thick dual density fiberglass

HOT WATER HEAT

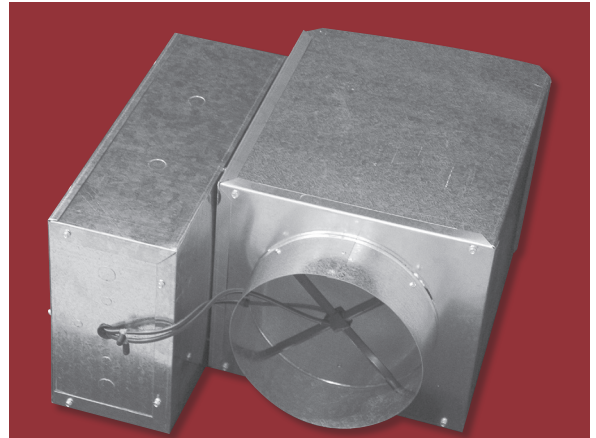
- 1/2" O.D. copper tubes (0.016" tube wall thickness)
- 0.0045" thick aluminum fins
- 10 or 12 FPI (fins per inch)
- 1, 2, 3, or 4 rows of heating
- Vent and drain option available
- Left-hand or right-hand coil connections
- AHRI 410 certified

ELECTRIC HEAT

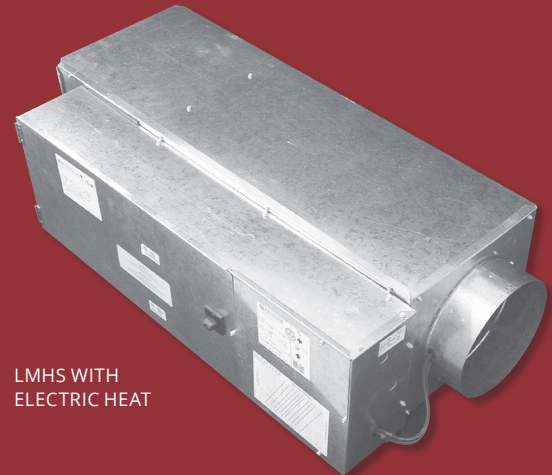
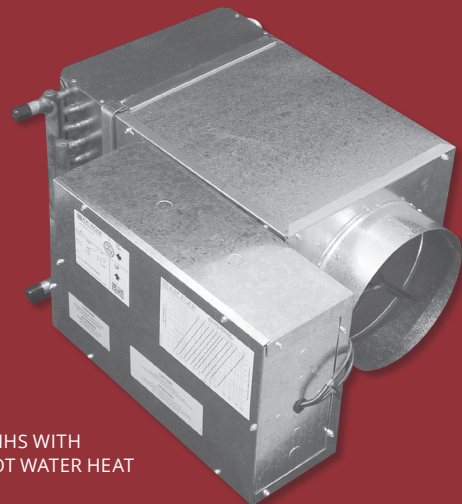
- Up to 3 stages of electric heat
- Solid state relays available for silent operation
- Available with LineaHeat™, silent operating electronic proportional control
- Line voltage options:
 - 120, 208/240, 277, or 480 volt, 1-phase
 - 208 volt, 3-phase, 3-wire
 - 480 volt, 3-phase, 3-wire
 - 480 volt, 3-phase, 4-wire (with neutral)

CERTIFICATIONS

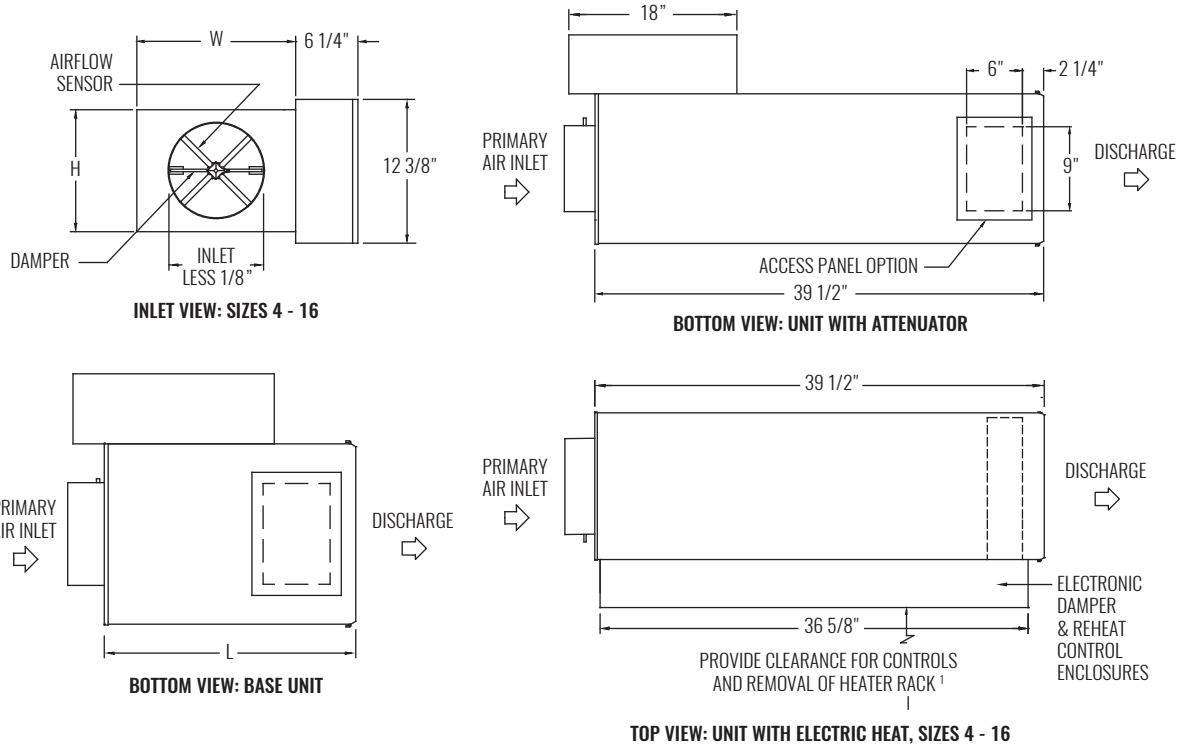
- AHRI 880 certified sound performance data
- ETL Listed - Adherence to UL 429 for units with factory provided transformers
- ETL Listed - Adherence to UL 1996 for units with electric heat



LMHS BASE UNIT


 LMHS WITH
ELECTRIC HEAT

 LMHS WITH
HOT WATER HEAT


DIMENSIONAL DATA



NOTES: Right-hand unit with electronic control enclosure shown; left-hand is available. Slip and Drive outlet duct connection. Access panel not available on electric heat units. Access panel for size 22 only available on attenuated unit. Damper extends past base unit on sizes 14 (2") and 16 (3"). See table below for dimensional references.

¹ Check NEC for unit clearance requirements.

PERFORMANCE AND DIMENSIONAL DATA

SIZE	PERFORMANCE			DIMENSIONS		
	INLET	AIRFLOW RANGE (CFM)	NOMINAL AIRFLOW (CFM)	RADIATED & DISCHARGE NC	L (BASE UNIT)	W
4"	25 - 230	150	< 20 / 26	15 1/2"	12"	8"
5"	36 - 360	250	20 / 29	15 1/2"	12"	8"
6"	52 - 515	400	27 / 29	15 1/2"	12"	8"
7"	70 - 700	550	26 / 31	15 1/2"	12"	10"
8"	92 - 920	700	28 / 31	15 1/2"	12"	10"
9"	116 - 1160	900	24 / 25	15 1/2"	14"	12 1/2"
10"	145 - 1425	1100	24 / 26	15 1/2"	14"	12 1/2"
12"	205 - 2060	1600	29 / 26	15 1/2"	16"	15"
14"	281 - 2800	2100	25 / 26	15 1/2"	20"	17 1/2"
16"	367 - 3660	2800	31 / 27	15 1/2"	24"	18"
22"	700 - 7000	5300	48 / 45	15"	38"	18"

NOTES: Information shown is abbreviated. See website for complete information. Discharge sound power is the sound emitted from the unit discharge. Radiated sound power is the sound transmitted through the casing walls. All sound data is based on tests conducted in accordance with AHRI 880-11. NC application data is based on Sound Power levels (dB, re 10⁻¹² Watts) applied to AHRI Standard 885-08 Appendix E, as a function of flow rate shown. All data points listed are application ratings outside the scope of the Certification Program.