

KBVD Dual Blower Arr. 3

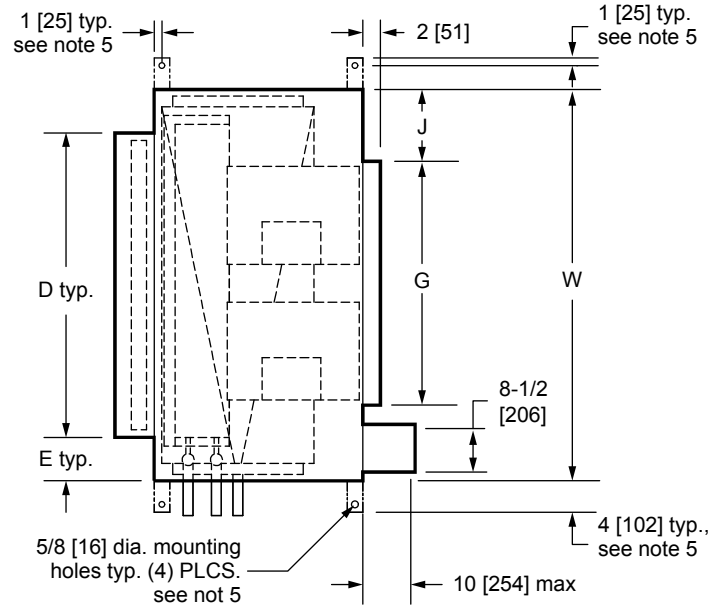
DIRECT DRIVE DUAL BLOWER COIL UNIT
DISCHARGE ARGT. 3

JOB NAME _____
ENGINEER _____
CONTRACTOR _____
TAG _____

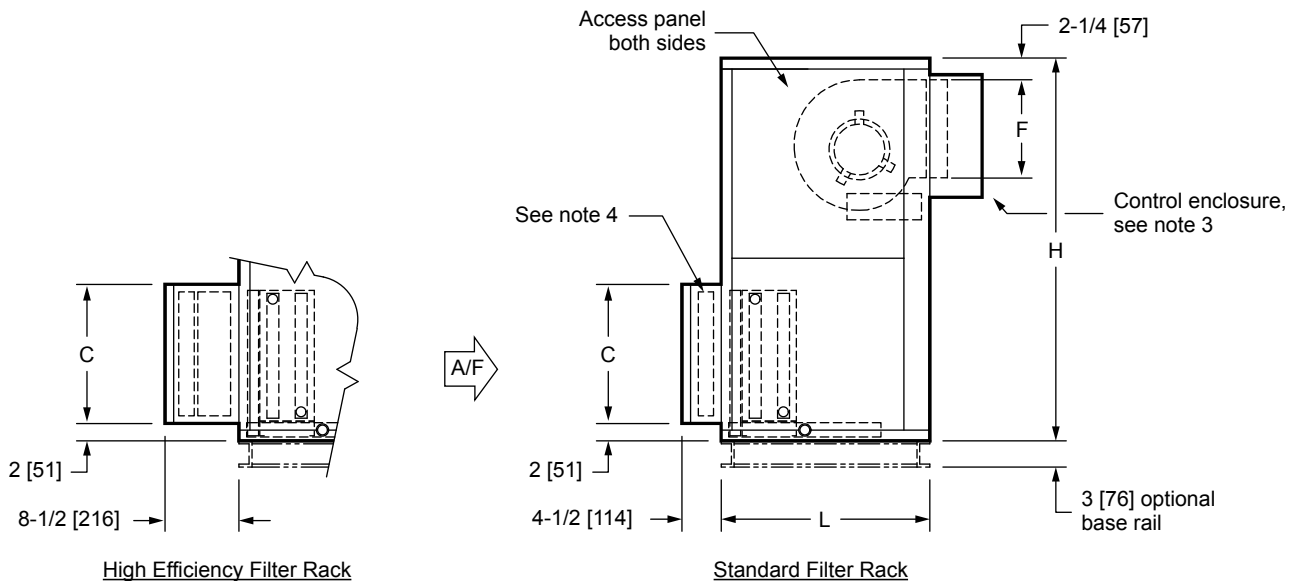
SUBMITTAL SHEET

NOTES:

- All dimensions are in Inches [millimeters]. All dimensions are $\pm 1/4"$ [6mm]. Metric values are soft conversion.
- Right hand unit shown, Left hand unit opposite. Motor/drive location may be specified Left or Right Hand. Standard control enclosure location matches motor/drive position.
- Provide sufficient clearance to permit access to controls and comply with applicable codes and ordinances.
- See drawing BCS-KBOD-ACFR0 for filter rack details.
- Base rail is optional on the base unit. See drawing BCS-KBOD-ACEB0. Base rails must be used with mixing box.
- See coil connection detail drawings for coil connection sizes and locations.



TOP VIEW



SIDE VIEWS

DIMENSIONS										
UNIT SIZE	FAN SIZE	L	W	H	C	D	E	F	G	J
30	10 x 8 [254 x 203]	30 [762]	59 [1499]	56 [1422]	25 [635]	51 [1295]	4 [102]	18 [457]	36-1/2 [927]	11-1/4 [286]
40	10 x 8 [254 x 203]	30 [762]	68 [1727]	59 [1499]	25 [635]	59 [1499]	4-1/2 [114]	18 [457]	36-1/2 [927]	15-3/4 [400]