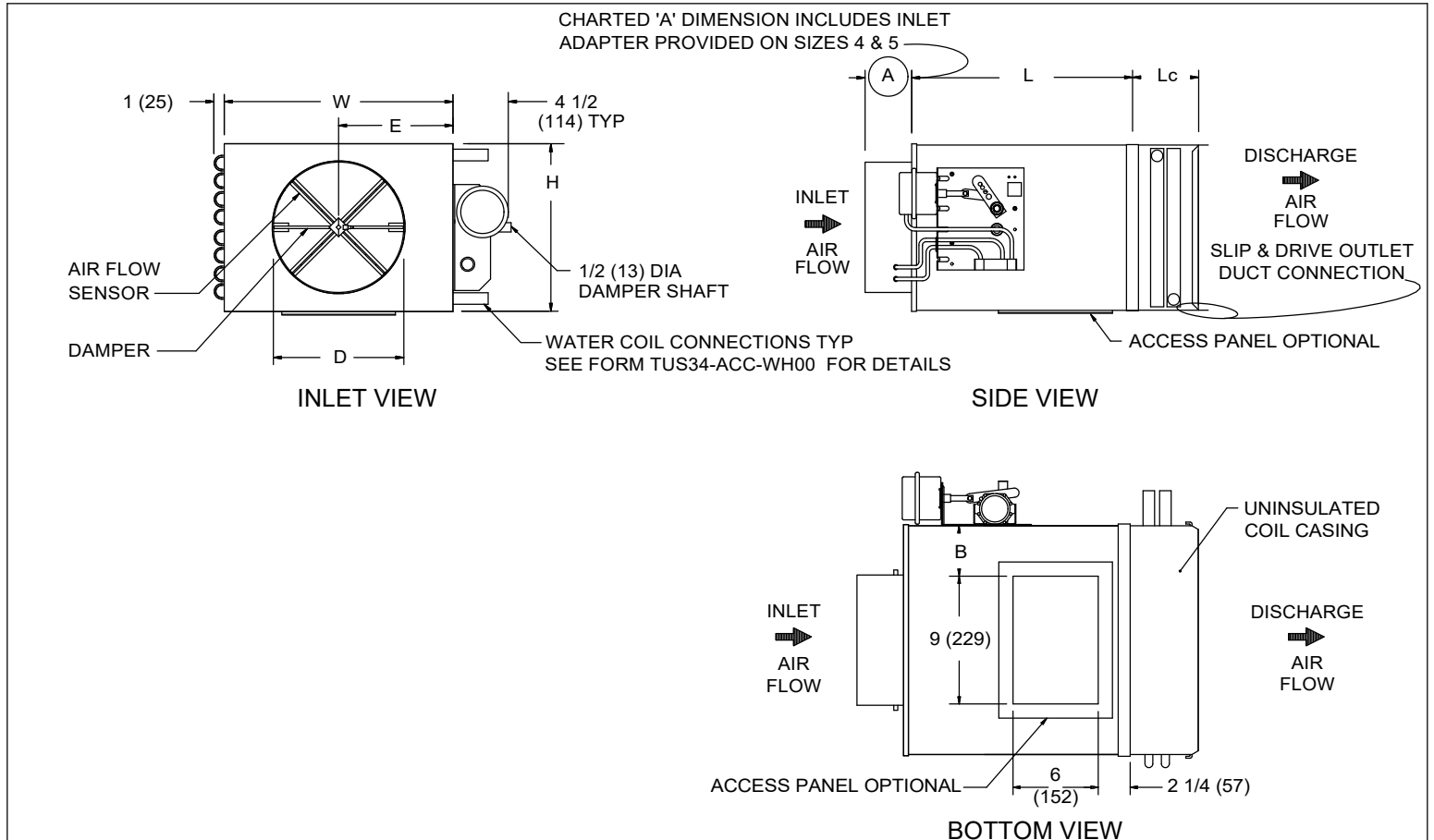


LMHS-LC

SINGLE DUCT WITH LARGE CASING WITH HOT WATER COIL & PNEU. CONTROL

SUBMITTAL SHEET



STANDARD FEATURES:

- 22 Ga. Zinc coated steel construction.
- 1/2" thick dual density fiberglass insulation meeting **NFPA 90A** and **UL 181** safety requirements.
- Linear averaging sensor.
- Hot water coils. See form TUS34-ACC-WH00 for dimensions and specifications
- Pneumatic pressure independent controls
- Compressed air consumption : 1.0 scfh @ 20 psig.
- AHRI 880 certified sound ratings

NOTE: Right hand configuration shown, left hand available.

OPTIONAL FEATURES:

- Liners:
 - 1" dual density fiberglass
 - 1/2" Cellular insulation
 - 1" Cellular insulation
 - Sterilwall w/ 1/2" fiberglass
 - Sterilwall w/ 1" fiberglass
 - Perf. Double Wall w/ 1/2" fiberglass
 - Perf. Double Wall w/ 1" fiberglass
 - Steriliner
 - None
- 20 Ga. Zinc coated steel construction
- Linear averaging sensor
- Left hand control
- Right hand control
- Left hand water coil connection
- Right hand water coil connection
- Bottom access panel
- Cam lock bottom access panel
- Hanger brackets
- Direct acting thermostat
- Reverse acting thermostat
- Pneu. actuator only
- Normally open damper
- Normally closed damper

DIMENSIONS ARE GIVEN AS INCHES (MM)

| INLET SIZE | NOM MAX CFM (L/S) | L | W | H | A | B | D | E | Lc |
|------------|-------------------|--------------|----------|----------|-------------|-------------|--------------|----------|----------------------------|
| 4 | 230 (109) | 15 1/2 (394) | 12 (305) | 10 (254) | 5 3/8 (136) | 1 1/2 (38) | 3 7/8 (98) | 6 (152) | SEE FORM TUS34-ACC-WH00 |
| 5 | 360 (170) | 15 1/2 (394) | 12 (305) | 10 (254) | 5 3/8 (136) | 1 1/2 (38) | 4 7/8 (124) | 6 (152) | |
| 6 | 515 (243) | 15 1/2 (394) | 12 (305) | 10 (254) | 3 3/8 (86) | 1 1/2 (38) | 5 7/8 (149) | 6 (152) | |
| 7 | 700 (330) | 15 1/2 (394) | 14 (356) | 12 1/2 | 3 3/8 (86) | 2 1/2 (64) | 6 7/8 (175) | 7 (178) | |
| 8 | 920 (434) | 15 1/2 (394) | 14 (356) | 12 1/2 | 3 3/8 (86) | 2 1/2 (64) | 7 7/8 (200) | 7 (178) | |
| 9 | 1160 (547) | 15 1/2 (394) | 16 (406) | 15 (381) | 3 3/8 (86) | 3 1/2 (89) | 8 7/8 (225) | 8 (203) | |
| 10 | 1430 (674) | 15 1/2 (394) | 16 (406) | 15 (381) | 3 3/8 (86) | 3 1/2 (89) | 9 7/8 (251) | 8 (203) | |
| 12 | 2060 (972) | 15 1/2 (394) | 20 (508) | 17 1/2 | 3 3/8 (86) | 5 1/2 (140) | 11 7/8 (302) | 10 (254) | |
| 14 | 2800 (1321) | 15 1/2 (394) | 24 (610) | 18 (457) | 3 3/8 (86) | 7 1/2 (191) | 13 7/8 (352) | 12 (305) | |