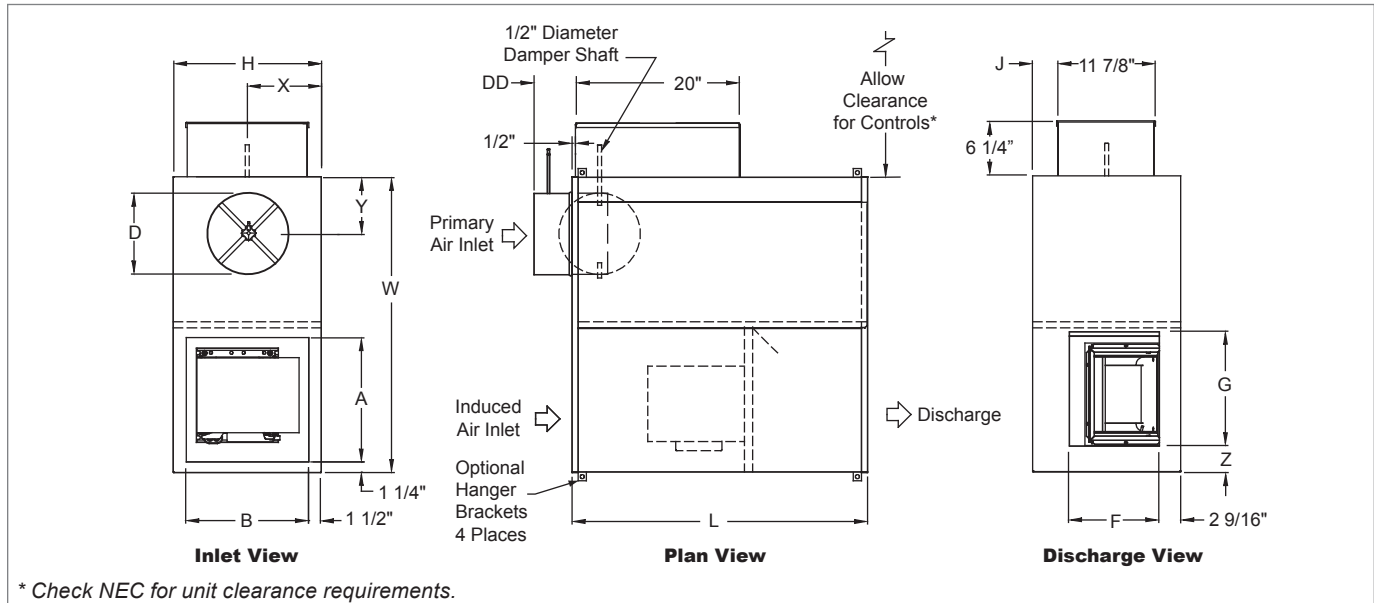


KQFP | Ultra Quiet, Parallel Flow

KQFP Base Unit Dimensional Information

KQFP BASE UNIT, INLET, PLAN, AND DISCHARGE VIEWS



* Check NEC for unit clearance requirements.

KQFP BASE UNIT, DIMENSIONAL DETAILS

| Unit Size | Inlet Size | Max. Primary CFM | Max. Fan CFM | PSC HP | L | W | H | Induced Air | | | Discharge | | J | X | Y | Z |
|-----------|------------|------------------|--------------|--------|---------|---------|----------|-------------|-----|---------|-----------|-----|--------|-----|---------|--------|
| | | | | | | | | A | B | D | F | G | | | | |
| 2 | 06 | 515 | 530 | 1/4 | 36 1/8" | 36 1/8" | 18 1/16" | 15 1/8" | 15" | 5 7/8" | 11" | 14" | 3 1/8" | 9" | 6" | 2 5/8" |
| 2 | 08 | 920 | 530 | 1/4 | 36 1/8" | 36 1/8" | 18 1/16" | 15 1/8" | 15" | 7 7/8" | 11" | 14" | 3 1/8" | 9" | 6" | 2 5/8" |
| 3 | 08 | 920 | 875 | 1/4 | 36 1/8" | 36 1/8" | 18 1/16" | 15 1/8" | 15" | 7 7/8" | 11" | 14" | 3 1/8" | 9" | 6" | 2 5/8" |
| 3 | 10 | 1430 | 875 | 1/4 | 36 1/8" | 36 1/8" | 18 1/16" | 15 1/8" | 15" | 9 7/8" | 11" | 14" | 3 1/8" | 9" | 7" | 2 5/8" |
| 4 | 10 | 1430 | 975 | 1/4 | 36 1/8" | 36 1/8" | 18 1/16" | 15 1/8" | 15" | 9 7/8" | 11" | 14" | 3 1/8" | 9" | 7" | 2 5/8" |
| 4 | 12 | 2060 | 975 | 1/4 | 36 1/8" | 36 1/8" | 18 1/16" | 15 1/8" | 15" | 11 7/8" | 11" | 14" | 3 1/8" | 9" | 8" | 2 5/8" |
| 5 | 12 | 2060 | 1860 | 1/2 | 42 1/8" | 46 1/8" | 20 1/16" | 20 1/8" | 17" | 11 7/8" | 15" | 17" | 4 1/8" | 10" | 8" | 4 7/8" |
| 5 | 14 | 2800 | 1860 | 1/2 | 42 1/8" | 46 1/8" | 20 1/16" | 20 1/8" | 17" | 13 7/8" | 15" | 17" | 4 1/8" | 10" | 10" | 4 7/8" |
| 6 | 14 | 2800 | 1860 | 1/2 | 42 1/8" | 46 1/8" | 20 1/16" | 20 1/8" | 17" | 13 7/8" | 15" | 17" | 4 1/8" | 10" | 10" | 4 7/8" |
| 6 | 16 | 3660 | 1860 | 1/2 | 42 1/8" | 46 1/8" | 20 1/16" | 20 1/8" | 17" | 15 7/8" | 15" | 17" | 4 1/8" | 10" | 10 1/4" | 4 7/8" |
| 7 | 16 | 3660 | 2250 | 3/4 | 42 1/8" | 46 1/8" | 20 1/16" | 20 1/8" | 17" | 15 7/8" | 15" | 17" | 4 1/8" | 10" | 10 1/4" | 4 7/8" |

NOTES: Left-hand base unit with electronic control enclosure shown; right-hand is available. For a complete list of available inlet sizes, see page B2-29.

KQFP Base Unit Features & Options

STANDARD FEATURES

- 20 Gage galvanized steel casing construction.
- Control enclosure for electronic components.
- 1/2" Thick, Dual density fiberglass insulation that meets NFPA 90A and UL 181 safety requirements.
- [120, 208/240, or 277 volt, multi-voltage, single-phase, single-speed] permanently lubricated PSC motors.
- Field adjustable fan speed control.
- Integral induced air attenuator. • Motor/blower isolation.
- Removable bottom panel allows easy access to motor/blower assembly and primary air damper.
- Four quadrant, center averaging airflow sensor; inlet sizes 6 - 10 (DD = 4 7/8"); sizes 12 - 16 (DD = 6 7/8").
- Discharge requires flanged duct; connection by others.
- Includes 24 volt control transformer.
- Backdraft damper assembly.
- ETL listed; adherence to UL 1995 and CSA C22.2 No. 236.95.
- AHRI certified sound ratings.

OPTIONAL FEATURES

- Liners: 1/2" or 1" Cellular insulation, 1" Dual density fiberglass insulation, 1/2" or 1" Foil encapsulated fiberglass insulation, Sterilwall, Steriliner, Perforated doublewall, or no liner.
- Linear averaging airflow sensor; inlet sizes 6 - 10 (DD = 4 7/8"), sizes 12 - 16 (DD = 6 7/8").
- [120, 208/240, or 277 volt, single-voltage] ECM motor with manual or remote adjustable speed controller (on unit sizes 4 and 7).
- Cam locks (access panel).
- Motor disconnect.
- Induced air filter, construction type; unit sizes 2 - 4 (17"x17"x1"); unit sizes 5 - 7 (22"x19"x1").
- Left-hand or right-hand control enclosure.
- Hanger brackets (not available with Sterilwall or Perforated doublewall liner options).
- Motor fusing.
- Dust tight control enclosure.

FAN POWERED TERMINAL UNITS

K Q F P

© KRUEGER 2012