

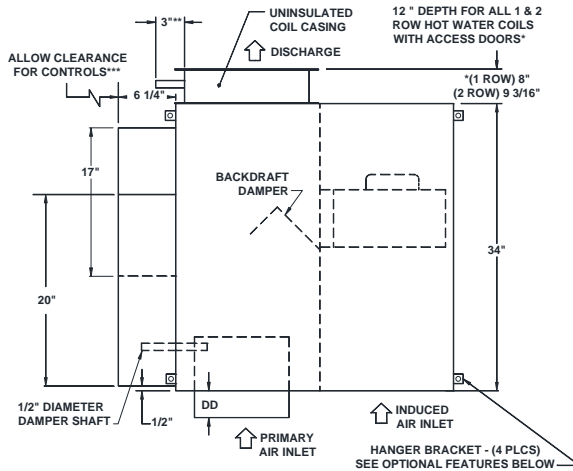
JOB NAME \_\_\_\_\_  
 ARCHITECT \_\_\_\_\_  
 ENGINEER \_\_\_\_\_  
 CONTRACTOR \_\_\_\_\_  
 LOCATION \_\_\_\_\_

**SUBMITTAL SHEET**  
 Form Number TUS307.9 Effective Date 11/12  
 Replaces TUS307.8

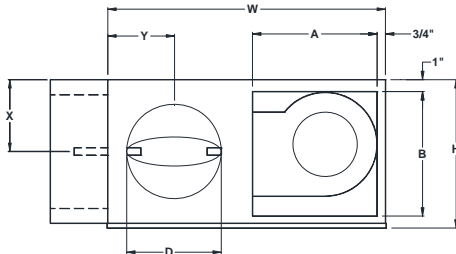


## QFV Unit Sizes 2 - 7

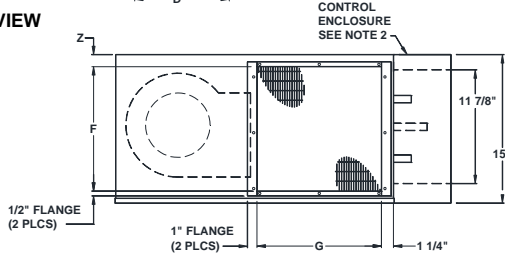
### HOT WATER HEAT VARIABLE VOLUME FAN TERMINAL UNIT



PLAN VIEW – LEFT HAND BOX  
 CONTROLS AND SENSORS NOT SHOWN



INLET VIEW



DISCHARGE VIEW

#### STANDARD FEATURES:

- 22 Ga. galvanized steel construction
- Steel control enclosure provided for electronic components
- 1/2" thick dual density fiberglass insulation meeting **NFPA 90A** and **UL 181** safety requirements
- Field adjustable fan speed control
- □ 120V □ 208V/240V □ 277V multi-voltage, single speed, single phase, permanently lubricated PSC motors
- Four quadrant averaging cross flow sensor
- Factory mounted 1 or 2 row hot water coil with 5/8" O.D. connections, 1/2" O.D. copper tubes, 20 Ga. steel casing, and aluminum fins; 10 FPI
- 24 volt control transformer for electronic controls
- Removable bottom panel allows easy access to all internal components for maintenance
- Flanged discharge connection on hot water coil
- **ETL** listed; **AHRI** certified sound ratings

#### OPTIONAL FEATURES:

- 20 Ga. galvanized steel construction
- Liners:
  - 1" dual density fiberglass insulation
  - 1/2" Foil encapsulated fiberglass insulation
  - 1" Foil encapsulated fiberglass insulation
  - 1/2" Cellular
  - 1" Cellular
- Hot Water Coil Connections:
  - Left Hand
  - Right Hand
- Coil access door
- Coil vent and drain
- Hanger brackets
- Linear averaging sensor
- Induced air inlet attenuator
- Induced air filter, construction type (Unit Sizes 2-4 15"x15"x1, Unit Sizes 5-7 19"x17"x1")
- Motor fusing
- Motor disconnect
- Dust tight control enclosure

#### NOTE :

1. Dimensions are given in inches.
2. Digital or Analog control enclosure 20" x 11-7/8", Pneumatic 17" x 15".

\*\*6 1/16" long connection with vent & drain option.

\*\*\* Check NEC for unit clearance requirements

UNIT SIZE	INLET SIZE	HP	W	H	INDUCED AIR		D	DD	DISCHARGE		X	Y	Z
					A	B			F	G			
2	06	1/10	29	15	13	13	5 7/8	4 7/8	12 1/2	15	7 1/2	6 7/8	1 3/4
2	08	1/10	29	15	13	13	7 7/8	4 7/8	12 1/2	15	7 1/2	6 7/8	1 3/4
3	08	1/10	29	15	13	13	7 7/8	4 7/8	12 1/2	15	7 1/2	6 7/8	1 3/4
3	10	1/10	29	15	13	13	9 7/8	4 7/8	12 1/2	15	7 1/2	6 7/8	1 3/4
4	10	1/4	29	15	13	13	9 7/8	4 7/8	12 1/2	22	7 1/2	6 7/8	1 3/4
4	12	1/4	29	15	13	13	11 7/8	6 7/8	12 1/2	22	7 1/2	6 7/8	1 3/4
5	12	1/2	37	17 3/4	17	15 3/4	11 7/8	6 7/8	15	22	8 7/8	9	1 7/8
5	14	1/2	37	17 3/4	17	15 3/4	13 7/8	6 7/8	15	22	8 7/8	9	1 7/8
6	14	1/2	37	17 3/4	17	15 3/4	13 7/8	6 7/8	15	24 1/2	8 7/8	9	1 7/8
6	16	1/2	37	17 3/4	17	15 3/4	15 7/8	6 7/8	15	24 1/2	8 7/8	9	1 7/8
7	16	3/4	37	17 3/4	17	15 3/4	15 7/8	6 7/8	15	24 1/2	8 7/8	9	1 7/8