

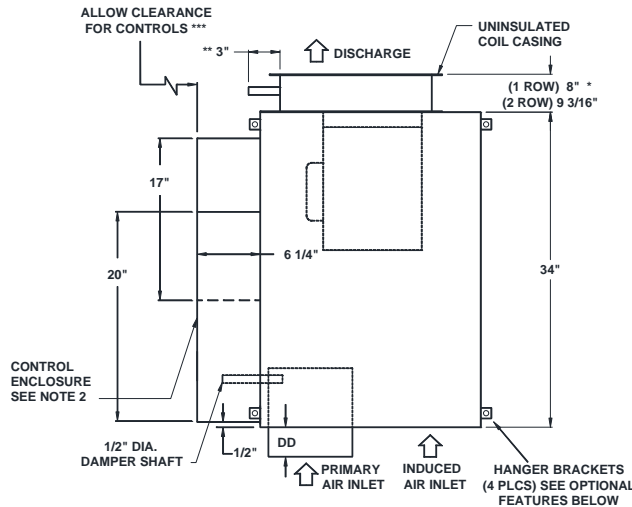
JOB NAME _____
 ARCHITECT _____
 ENGINEER _____
 CONTRACTOR _____
 LOCATION _____

SUBMITTAL SHEET
 Form Number TUS303.9 Effective Date 09/12
 replaces TUS303.8

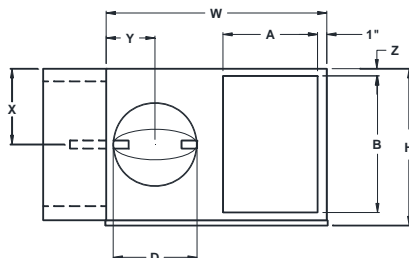


QFC Unit Sizes 2 - 6

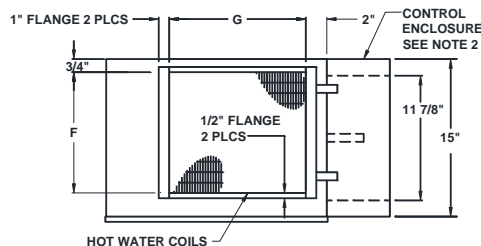
HOT WATER HEAT CONSTANT VOLUME FAN TERMINAL UNIT



PLAN VIEW – LEFT HAND CONTROLS & WATER CONNECTION
 CONTROLS AND SENSORS NOT SHOWN



INLET VIEW



DISCHARGE VIEW

STANDARD FEATURES:

- 22 Ga. galvanized steel construction
- Control enclosure provided for electronic components
- 1/2" thick dual density fiberglass insulation meeting **NFPA 90A** and **UL 181** safety requirements
- Field adjustable fan speed control
- 120V 208V/240V 277V multi-voltage, single speed, single phase, permanently lubricated PSC motors
- Factory mounted, 1 or 2 row hot water coil with 5/8" O.D. connection, 1/2" O.D. copper tubes, 20 Ga. steel casing, & 10 FPI
- Removable bottom panel allows easy access to all internal components for maintenance
- Four quadrant averaging cross flow sensor
- Flanged discharge connection on hot water coil
- 24 volt control transformer for electronic controls
- ETL listed; AHRI certified sound ratings

OPTIONAL FEATURES:

- 20 Ga. galvanized steel construction
- ECM Motor (Available on Unit Size 3 and 6)
 - VCU Controls ACU Controls
 - 120V 208V/240V 277V
- Liners:
 - 1" dual density fiberglass insulation
 - 1/2" Foil encapsulated fiberglass insulation
 - 1" Foil encapsulated fiberglass insulation
 - 1/2" Cellular insulation
 - 1" Cellular insulation
- Hot Water Coil Connections:
 - Left Hand Right Hand
- Control Enclosure Location:
 - Left Hand Right Hand
- Dust tight control enclosure
- Linear averaging sensor
- Hanger Brackets
- Motor fusing
- Motor disconnect
- Induced air inlet attenuator
- Induced air filter, construction type (Unit Sizes 2-3 11"x15"x1, Unit Sizes 4-6 17"x17"x1")
- Coil access door upstream of coil
- Coil vent and drain

NOTE:

1. Dimensions are given in inches
2. Digital or Analog control enclosure is 20"x11 7/8" Pneumatic 17"x15"

* 12" depth for all 1 and 2 row hot water coils with access doors

** 6 1/16" long connection with vent and drain

*** Check NEC for unit clearance requirements

UNIT SIZE	INLET SIZE	PSC HP	ECM HP	W	H	INDUCED AIR		D	DD	DISCHARGE		X	Y	Z
						A	B			F	G			
2	6	1/10	-	21	15	9	13	5 7/8	4 7/8	12 1/2	15	7 1/2	5 3/8	1
3	6	1/4	1/2	21	15	9	13	5 7/8	4 7/8	12 1/2	15	7 1/2	5 3/8	1
3	8	1/4	1/2	21	15	9	13	7 7/8	4 7/8	12 1/2	15	7 1/2	5 3/8	1
4	8	1/4	-	32 1/4	17 3/4	14 3/8	15	7 7/8	4 7/8	12 1/2	22	8 7/8	5 3/8	1 3/8
4	10	1/4	-	32 1/4	17 3/4	14 3/8	15	9 7/8	4 7/8	12 1/2	22	8 7/8	7 3/8	1 3/8
4	12	1/4	-	32 1/4	17 3/4	14 3/8	15	11 7/8	6 7/8	12 1/2	22	8 7/8	8 3/8	1 3/8
5	10	1/2	-	32 1/4	17 3/4	14 3/8	15	9 7/8	4 7/8	15	22	8 7/8	7 3/8	1 3/8
5	12	1/2	-	32 1/4	17 3/4	14 3/8	15	11 7/8	6 7/8	15	22	8 7/8	8 3/8	1 3/8
6	10	3/4	1	32 1/4	17 3/4	14 3/8	15	9 7/8	4 7/8	15	24 1/2	8 7/8	7 3/8	1 3/8
6	12	3/4	1	32 1/4	17 3/4	14 3/8	15	11 7/8	6 7/8	15	24 1/2	8 7/8	8 3/8	1 3/8
6	14	3/4	1	32 1/4	17 3/4	14 3/8	15	13 7/8	6 7/8	15	24 1/2	8 7/8	8 3/8	1 3/8