

## KBVD Dual Blower Arr. 2 & Mixing Box

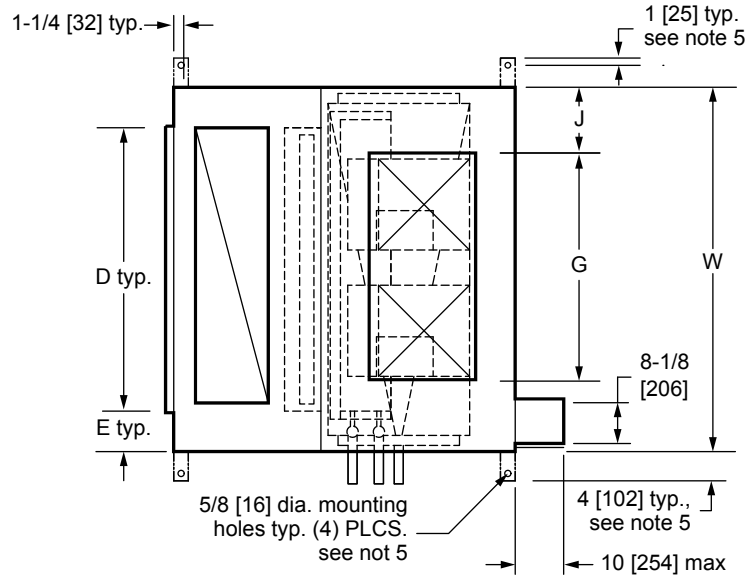
DIRECT DRIVE DUAL BLOWER COIL UNIT  
BASIC UNIT - DISCHARGE ARGT. 2 W/MIXING BOX

JOB NAME \_\_\_\_\_  
ENGINEER \_\_\_\_\_  
CONTRACTOR \_\_\_\_\_  
TAG \_\_\_\_\_

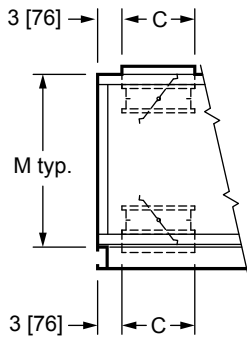
## SUBMITTAL SHEET

### NOTES:

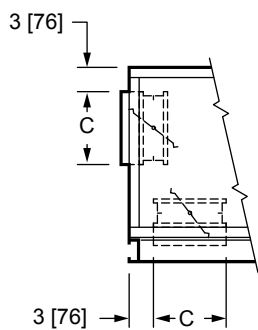
- All dimensions are in Inches [millimeters]. All dimensions are  $\pm 1/4"$  [6mm]. Metric values are soft conversion.
- Right hand unit shown, Left hand unit opposite. Motor/drive location may be specified Left or Right Hand. Standard control enclosure location matches motor/drive position.
- Provide sufficient clearance to permit access to controls and comply with applicable codes and ordinances.
- See drawing BCS-KBOD-ACFR0 for filter rack details.
- Outside and return air damper linkage is optional.
- See coil connection detail drawings for coil connection sizes and locations.
- High efficiency filter rack not available with mixing box.



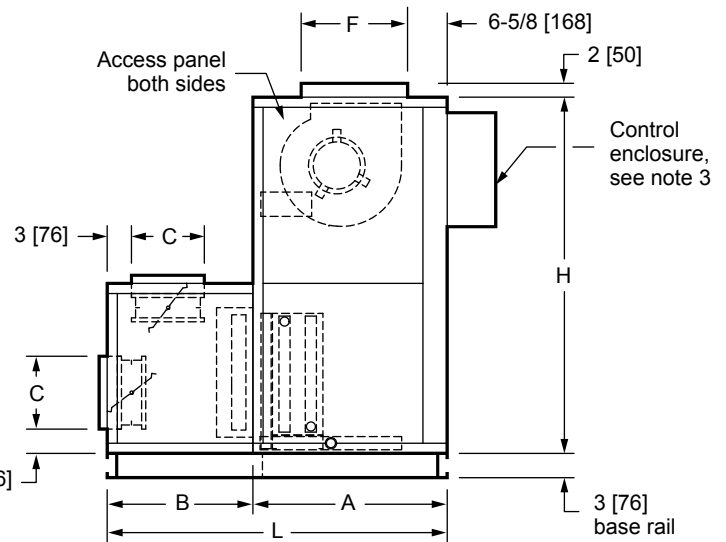
TOP VIEW



Top/Bottom Inlet



Rear/Bottom Inlet



Rear/Top Inlet

SIDE VIEWS

DIMENSIONS													
UNIT SIZE	FAN SIZE	L	W	H	A	B	C	D	E	F	G	J	M
30	10 x 8 [254 x 203]	51 [1295]	59 [1499]	56 [1422]	30 [762]	21 [533]	12 [305]	45 [1143]	7 [178]	18 [457]	36-1/2 [927]	11-1/4 [286]	30 [762]
40	10 x 8 [254 x 203]	54 [1372]	68 [1727]	59 [1499]	30 [762]	24 [610]	15 [381]	48 [1219]	10 [254]	18 [457]	36-1/2 [927]	11-1/4 [286]	30 [762]