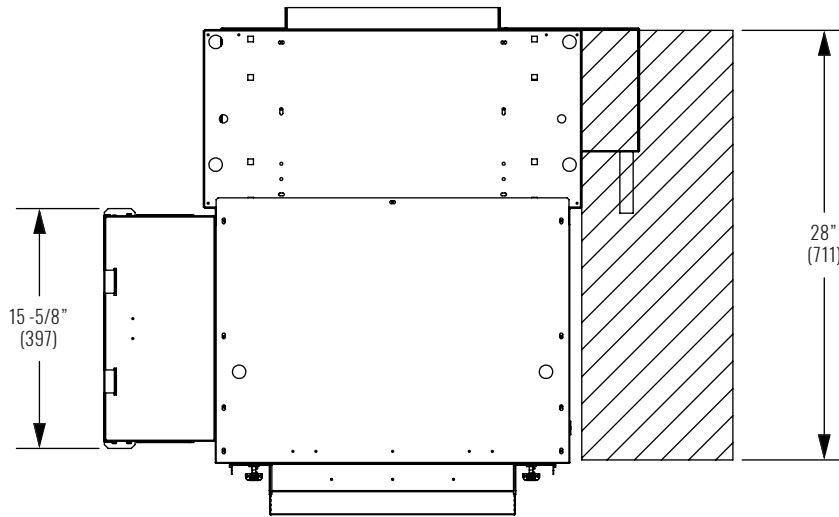
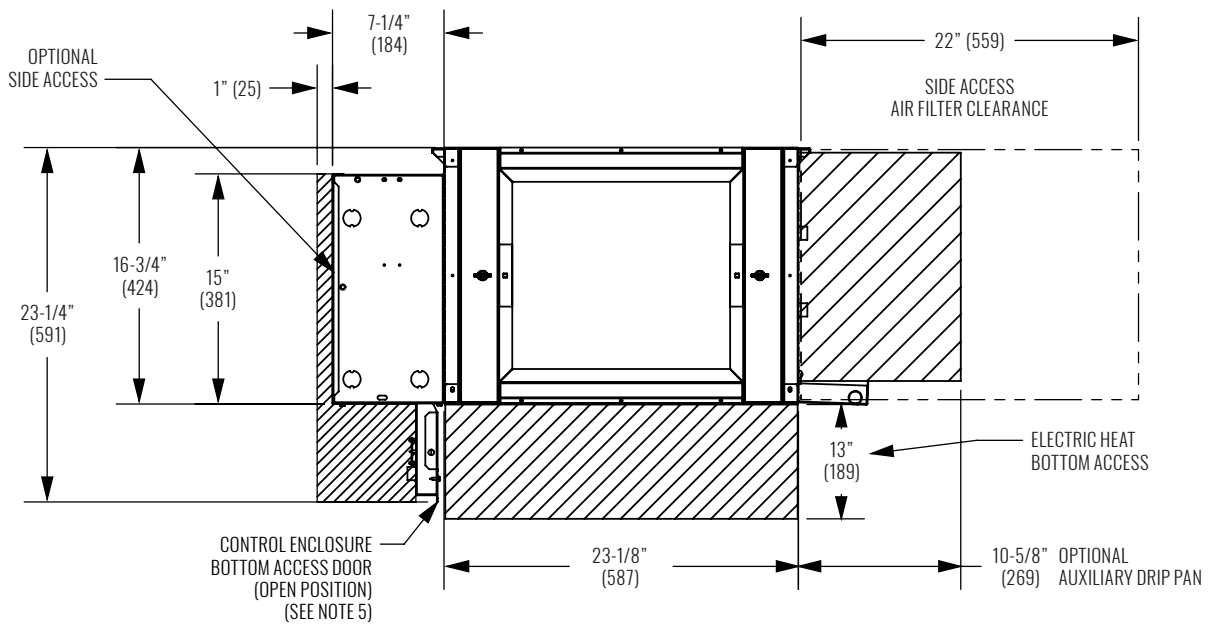


DIMENSIONAL DATA | KHGP | EXTERNAL SPACE REQUIREMENTS, REAR RETURN



TOP VIEW



BACK VIEW
RH SHOWN LH OPPOSITE

NOTES:

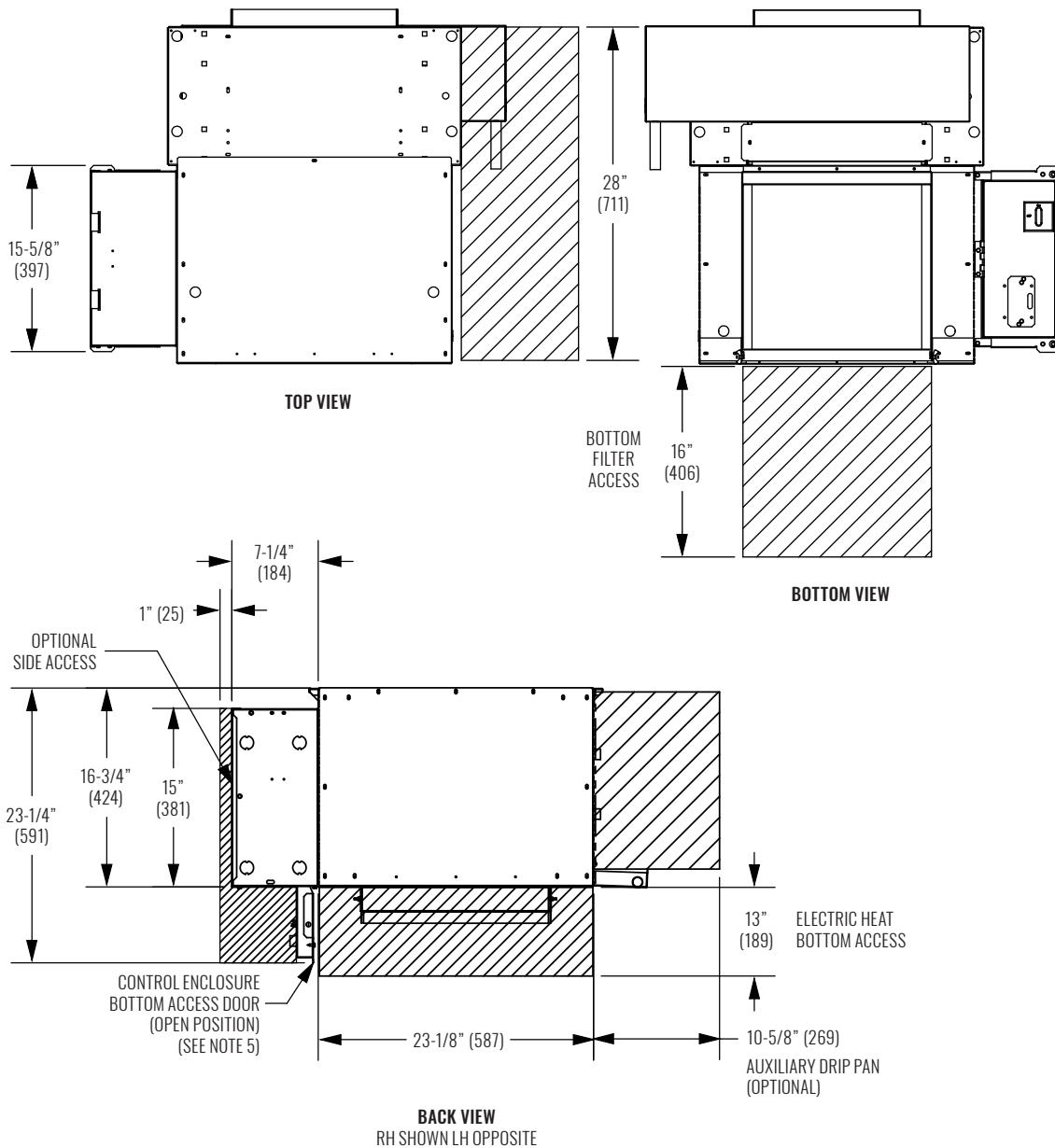
1. All chilled water piping that projects beyond the condensate pan or the optional auxiliary drip pan must be field insulated by others.
2. Optional auxiliary drip pan (not shown) is mounted on the outlet side of the drain pan.
3. Drain pan is installed with the outlet tube(s) on cooling coil connection end of coil on 4-pipe units with optional opposite end connection.
4. Dimensions shown on this drawing apply to standard CW and HW valve packages. Refer to Piping Details for more information. Contact factory for details on valve packages using non-standard or customer furnished components.
5. Drawings not for installation purposes. Refer to unit and size-specific submittal drawings for installation.
6. All dimensions in inches (millimeters). Metric values are soft conversion.

KHG - SERIES A

Horizontal | High Capacity



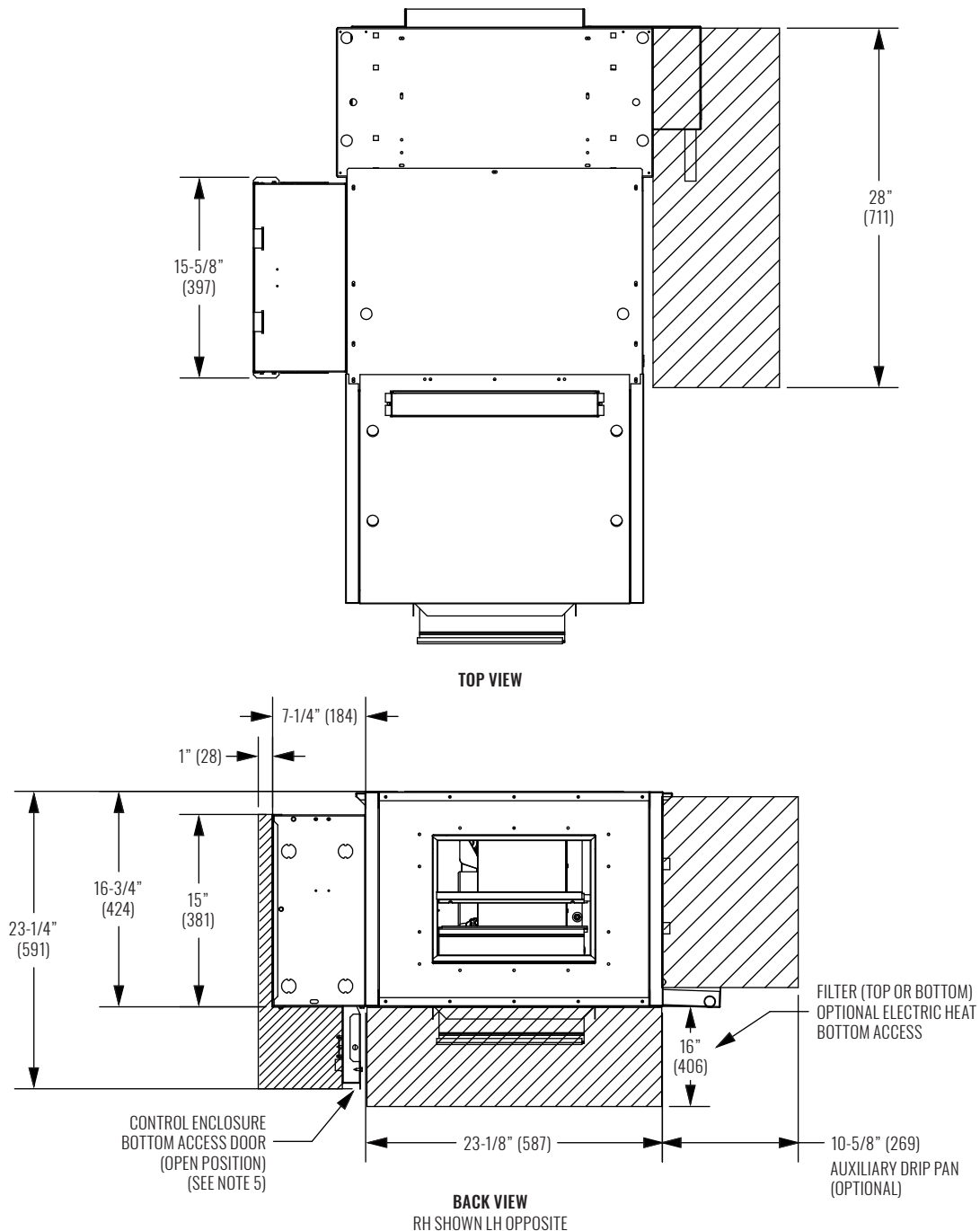
DIMENSIONAL DATA | KHGP | EXTERNAL SPACE REQUIREMENTS, BOTTOM RETURN



NOTES:

1. All chilled water piping that projects beyond the condensate pan or the optional auxiliary drip pan must be field insulated by others.
2. Optional auxiliary drip pan (not shown) is mounted on the outlet side of the drain pan.
3. Drain pan is installed with the outlet tube(s) on cooling coil connection end of coil on 4-pipe units with optional opposite end connection.
4. Dimensions shown on this drawing apply to standard CW and HW valve packages. Refer to Piping Details for more information. Contact factory for details on valve packages using non-standard or customer furnished components.
5. Provide sufficient clearance to access electrical components and comply with all applicable codes and ordinances.
6. Drawings not for installation purposes. Refer to unit and size-specific submittal drawings for installation.
7. All dimensions in inches (millimeters). Metric values are soft conversion.

DIMENSIONAL DATA | KHGP | EXTERNAL SPACE REQUIREMENTS, WITH MIXING BOX



NOTES:

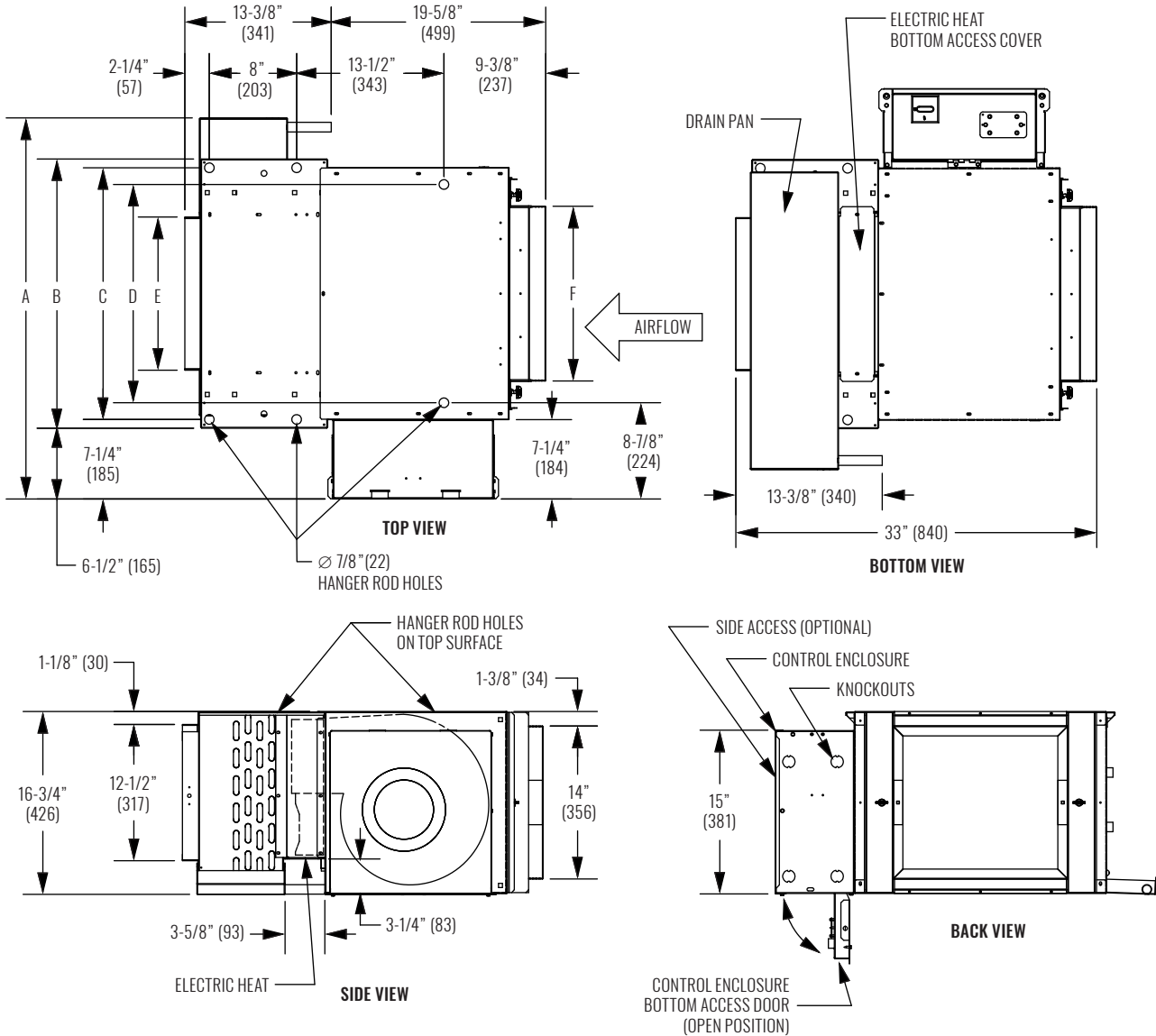
1. All chilled water piping that projects beyond the condensate pan or the optional auxiliary drip pan must be field insulated by others.
2. Optional auxiliary drip pan (not shown) is mounted on the outlet side of the drain pan.
3. Drain pan is installed with the outlet tube(s) on cooling coil connection end of coil on 4-pipe units with optional opposite end connection.
4. Dimensions shown on this drawing apply to standard CW and HW valve packages. Refer to Piping Details for more information. Contact factory for details on valve packages using non-standard or customer furnished components.
5. Provide sufficient clearance to access electrical components and comply with all applicable codes and ordinances.
6. Drawings not for installation purposes. Refer to unit and size-specific submittal drawings for installation.
7. All dimensions in inches (millimeters). Metric values are soft conversion.

KHG - SERIES A

Horizontal | High Capacity



DIMENSIONAL DATA | KHGP | REAR RETURN, 2-PIPE, WITH ELECTRIC HEAT, CONTROL ENCLOSURE OPPOSITE OF HANDING



UNIT SIZE	A	B	C	D	E	F
06	34-7/8" (886)	24-5/8" (721)	23-1/8" (587)	20" (508)	14" (356)	16" (406)
08	39-7/8" (1013)	29-5/8" (737)	28-1/8" (714)	25" (635)	19" (483)	21" (533)
10	43-7/8" (1114)	33-5/8" (838)	32-1/8" (816)	29" (737)	23" (584)	25" (635)
12	48-7/8" (1241)	38-5/8" (965)	37-1/8" (943)	34" (864)	28" (711)	30" (762)
14	53-7/8" (1368)	43-5/8" (1092)	42-1/8" (1070)	39" (991)	33" (838)	35" (889)
16	58-7/8" (1495)	48-5/8" (1219)	47-1/8" (1197)	44" (1118)	38" (965)	40" (1016)
18	63-7/8" (1622)	53-5/8" (1346)	52-1/8" (1324)	49" (1245)	43" (1092)	45" (1143)
20	67-7/8" (1724)	57-5/8" (1448)	56-1/8" (1426)	53" (1346)	47" (1194)	49" (1245)

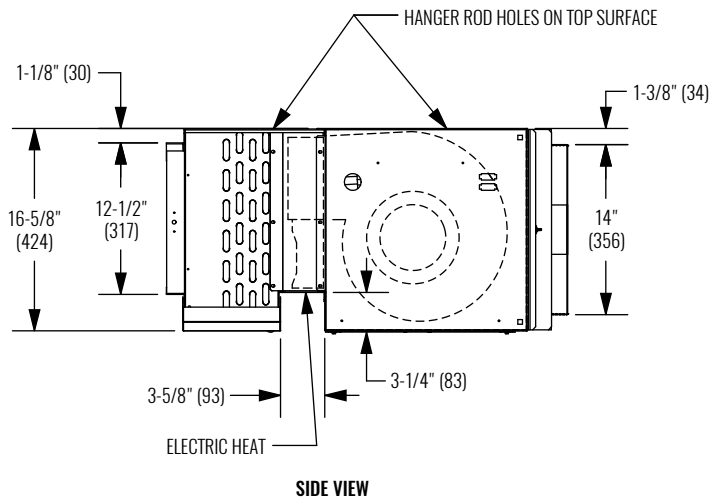
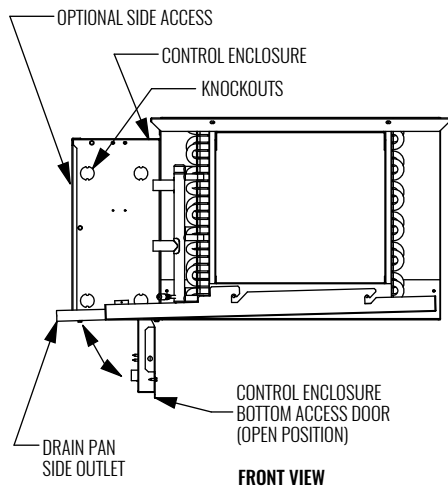
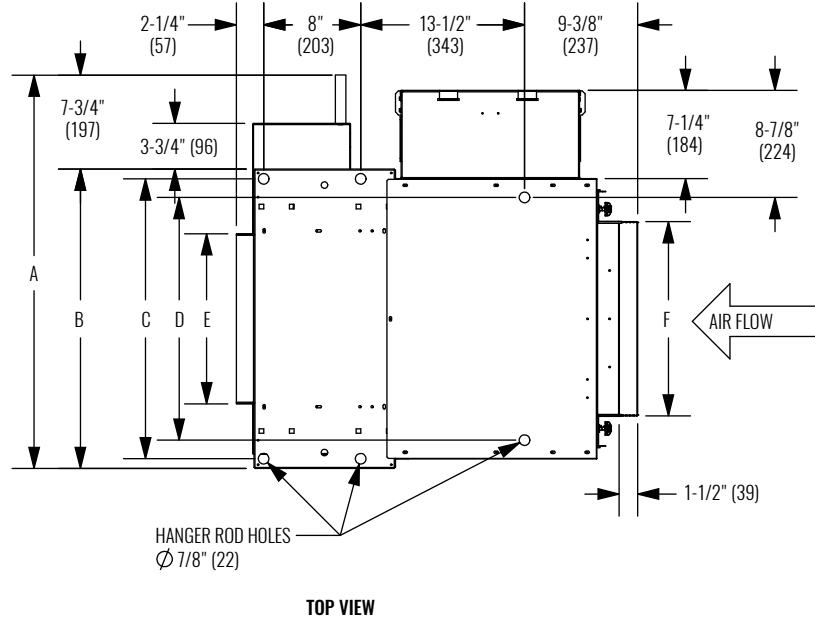
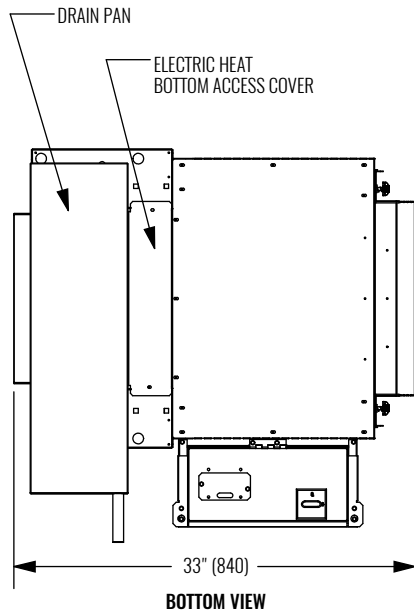
NOTES:

- All dimensions in inches (millimeters). All dimensions $\pm 1/4"$ (6mm). Metric values are soft conversion.
- Right hand unit shown, left hand unit opposite.
- Standard control enclosure is mounted on unit side opposite cooling coil connections and includes (4) knockouts on (2) sides. Provide sufficient clearance to access electrical controls and comply with applicable codes and ordinances.

FAN COIL UNITS | HORIZONTAL, HIGH CAPACITY

KHG - SERIES A

DIMENSIONAL DATA | KHGP | REAR RETURN, 2-PIPE, WITH ELECTRIC HEAT, CONTROL ENCLOSURE SAME SIDE OF HANDING



UNIT SIZE	A	B	C	D	E	F
06	32-3/8" (822)	24-5/8" (721)	23-1/8" (587)	20" (508)	14" (356)	16" (406)
08	37-3/8" (949)	29-5/8" (737)	28-1/8" (714)	25" (635)	19" (483)	21" (533)
10	41-3/8" (1050)	33-5/8" (838)	32-1/8" (816)	29" (737)	23" (584)	25" (635)
12	46-3/8" (1177)	38-5/8" (965)	37-1/8" (943)	34" (864)	28" (711)	30" (762)
14	51-3/8" (1304)	43-5/8" (1092)	42-1/8" (1070)	39" (991)	33" (838)	35" (889)
16	56-3/8" (1431)	48-5/8" (1219)	47-1/8" (1197)	44" (1118)	38" (965)	40" (1016)
18	61-3/8" (1558)	53-5/8" (1346)	52-1/8" (1324)	49" (1245)	43" (1092)	45" (1143)
20	65-3/8" (1660)	57-5/8" (1448)	56-1/8" (1426)	53" (1346)	47" (1194)	49" (1245)

NOTES:

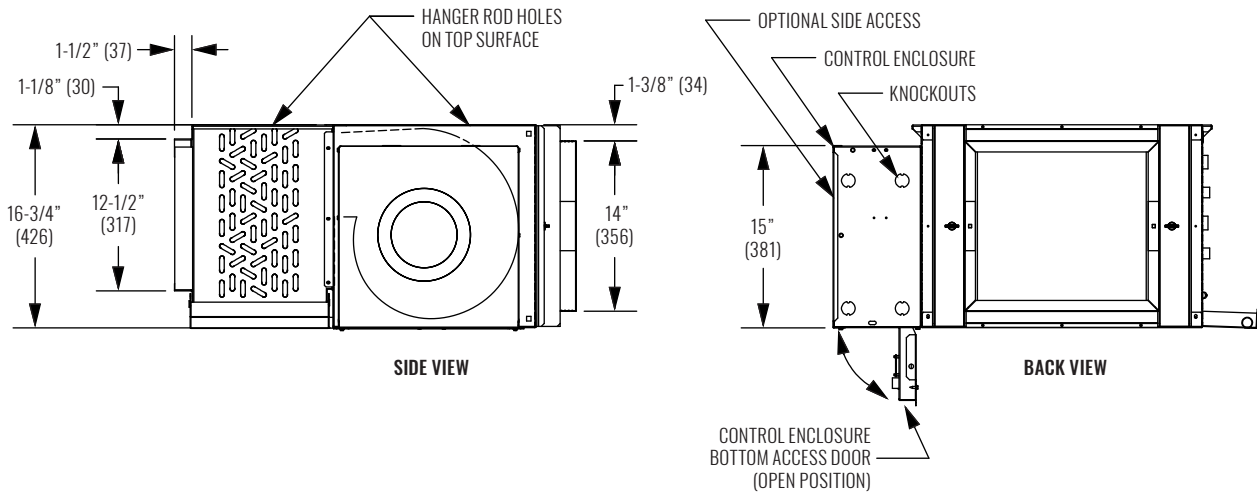
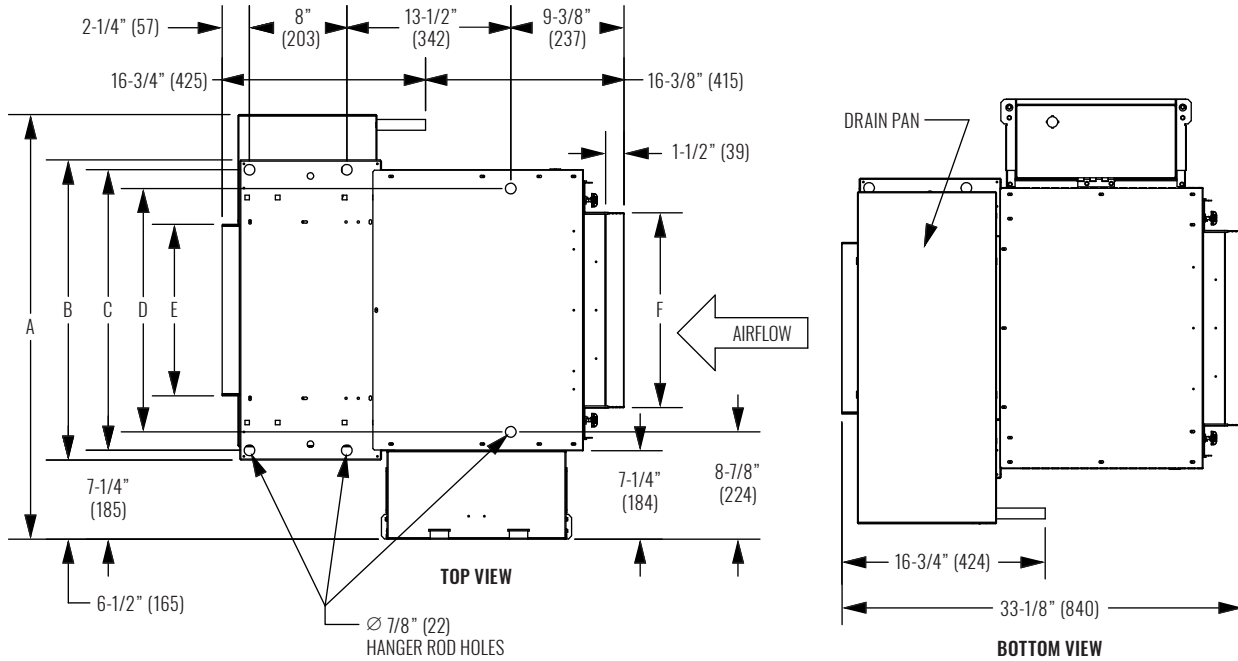
- All dimensions in inches (millimeters). All dimensions $\pm 1/4"$ (6mm). Metric values are soft conversion.
- Right hand unit shown, left hand unit opposite.
- Same side control enclosure shown mounted on unit side same as cooling coil connections and includes (4) knockouts on (2) sides. Provide sufficient clearance to access electrical controls and comply with applicable codes and ordinances.

KHG - SERIES A

Horizontal | High Capacity



DIMENSIONAL DATA | KHGP | REAR RETURN, 2-PIPE OR 4-PIPE, WITHOUT ELECTRIC HEAT, CONTROL ENCLOSURE OPPOSITE OF COIL HANDING



UNIT SIZE	A	B	C	D	E	F
06	34-7/8" (886)	24-5/8" (721)	23-1/8" (587)	20" (508)	14" (356)	16" (406)
08	39-7/8" (1013)	29-5/8" (737)	28-1/8" (714)	25" (635)	19" (483)	21" (533)
10	43-7/8" (1114)	33-5/8" (838)	32-1/8" (816)	29" (737)	23" (584)	25" (635)
12	48-7/8" (1241)	38-5/8" (965)	37-1/8" (943)	34" (864)	28" (711)	30" (762)
14	53-7/8" (1368)	43-5/8" (1092)	42-1/8" (1070)	39" (991)	33" (838)	35" (889)
16	58-7/8" (1495)	48-5/8" (1219)	47-1/8" (1197)	44" (1118)	38" (965)	40" (1016)
18	63-7/8" (1622)	53-5/8" (1346)	52-1/8" (1324)	49" (1245)	43" (1092)	45" (1143)
20	67-7/8" (1724)	57-5/8" (1448)	56-1/8" (1426)	53" (1346)	47" (1194)	49" (1245)

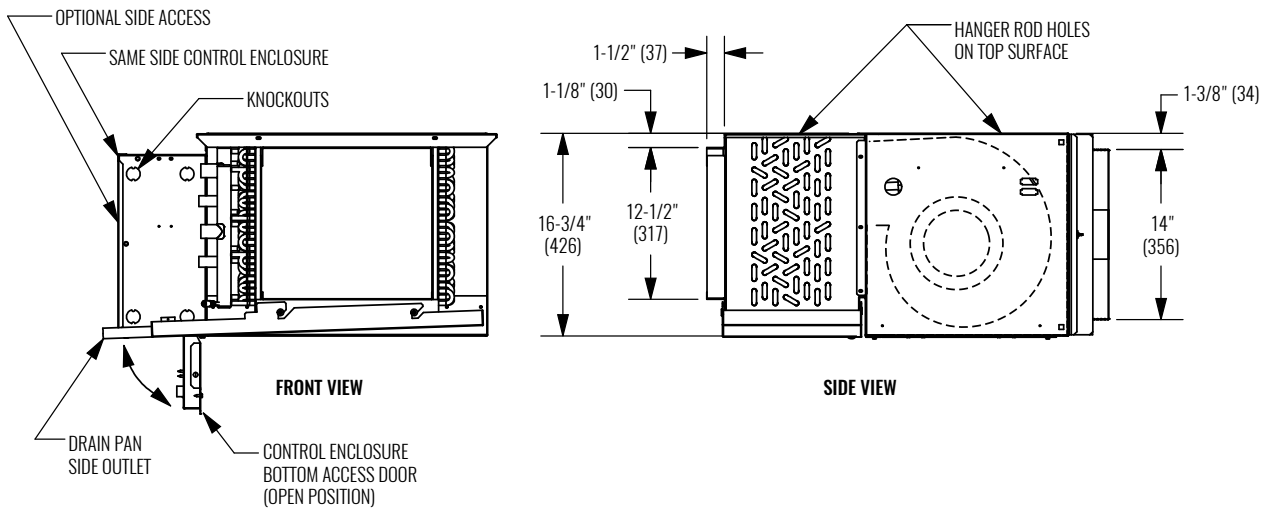
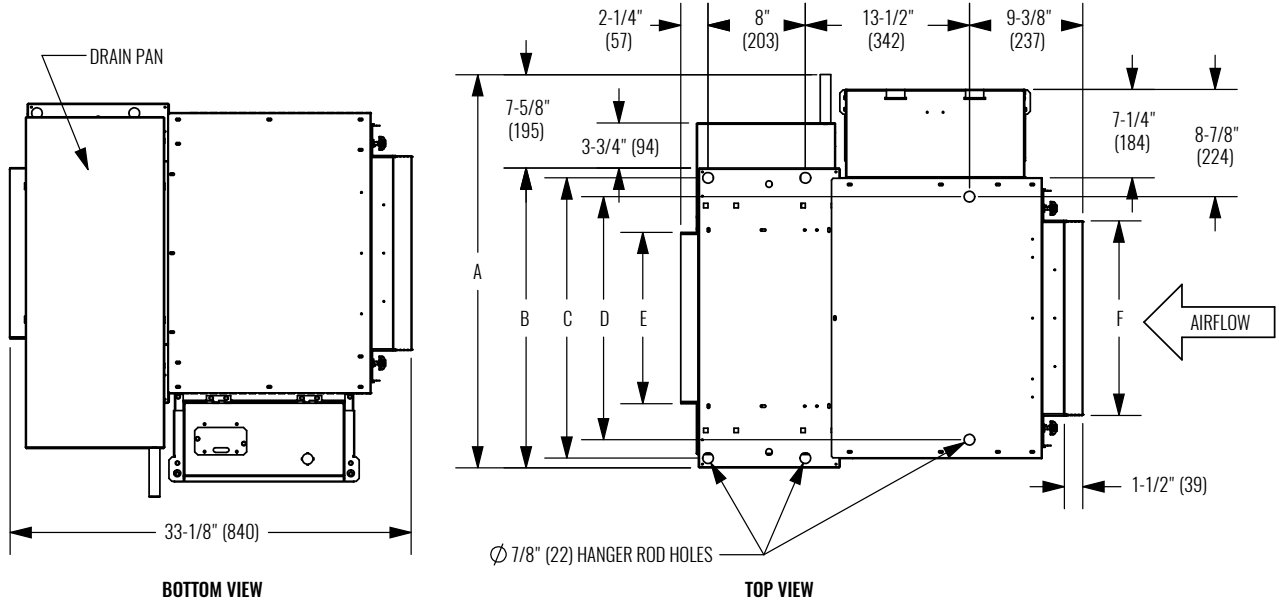
NOTES:

- All dimensions in inches (millimeters). All dimensions $\pm 1/4"$ (6mm). Metric values are soft conversion.
- Right hand unit shown, left hand unit opposite.
- Standard control enclosure is mounted on unit side opposite cooling coil connections and includes (4) knockouts on (2) sides. Provide sufficient clearance to access electrical controls and comply with applicable codes and ordinances.

FAN COIL UNITS | HORIZONTAL, HIGH CAPACITY

KHG - SERIES A

DIMENSIONAL DATA | KHGP | REAR RETURN, 2-PIPE OR 4-PIPE, WITHOUT ELECTRIC HEAT, CONTROL ENCLOSURE SAME SIDE AS COIL HANDING



UNIT SIZE	A	B	C	D	E	F
06	32-3/8" (822)	24-3/4" (629)	23-1/8" (587)	20" (508)	14" (356)	16" (406)
08	37-3/8" (949)	29-3/4" (756)	28-1/8" (714)	25" (635)	19" (483)	20" (508)
10	41-3/8" (1050)	33-3/4" (858)	32-1/8" (816)	29" (737)	23" (584)	25" (635)
12	46-3/8" (1177)	38-3/4" (985)	37-1/8" (943)	34" (864)	28" (711)	32" (813)
14	51-3/8" (1304)	43-3/4" (1112)	42-1/8" (1070)	39" (991)	33" (838)	36" (915)
16	56-3/8" (1431)	48-3/4" (1239)	47-1/8" (1197)	44" (1118)	38" (965)	40" (1016)
18	61-3/8" (1558)	53-3/4" (1366)	52-1/8" (1324)	49" (1245)	43" (1092)	45" (1143)
20	65-3/8" (1660)	57-3/4" (1467)	56-1/8" (1426)	53" (1346)	47" (1194)	50" (1270)

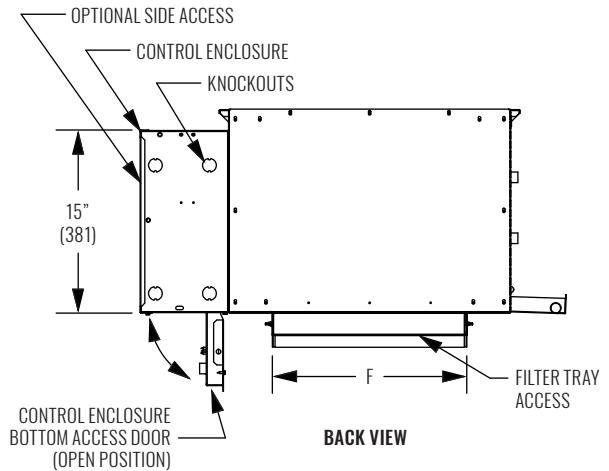
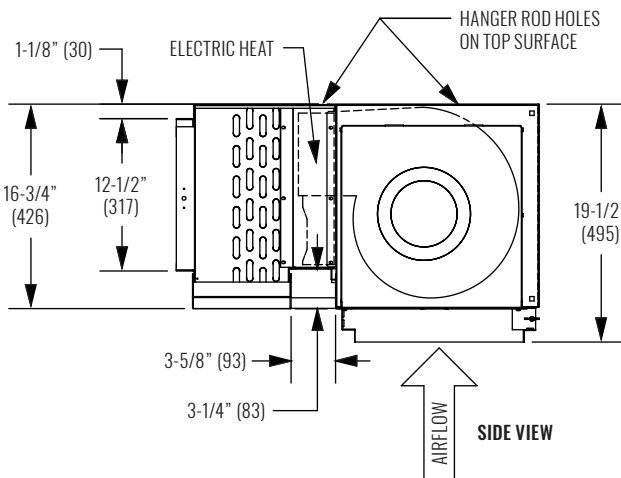
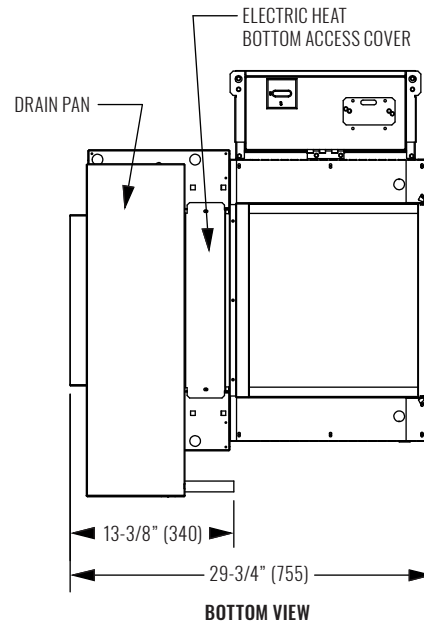
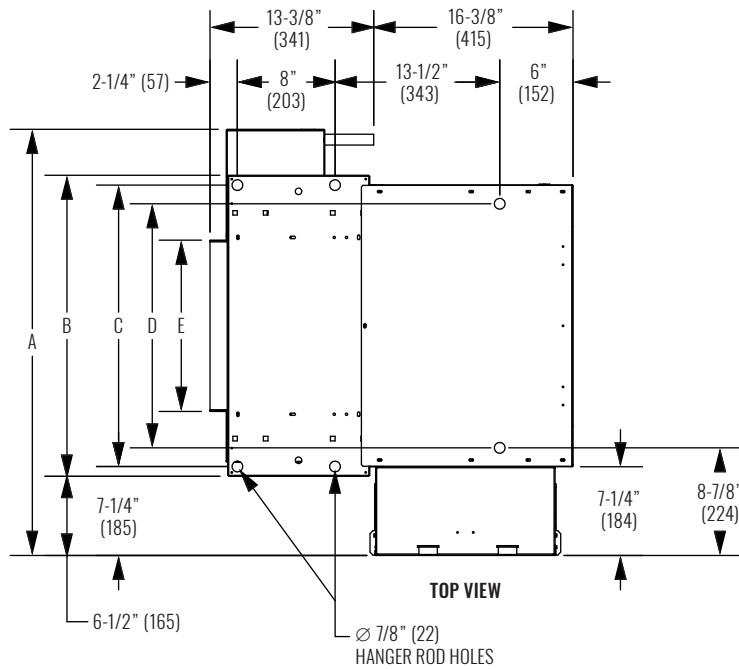
- NOTES:**
- All dimensions in inches (millimeters). All dimensions $\pm 1/4"$ [6mm]. Metric values are soft conversion.
 - Right hand unit shown, Left hand unit opposite.
 - Same side control enclosure shown mounted on unit same side as cooling coil connections and includes (4) knockouts on (2) sides. Provide sufficient clearance to access electrical controls and comply with applicable codes and ordinances.

KHG - SERIES A

Horizontal | High Capacity



DIMENSIONAL DATA | KHGP | BOTTOM RETURN, 2-PIPE, WITH ELECTRIC HEAT



UNIT SIZE	A	B	C	D	E	F
06	34-7/8" (886)	24-5/8" (721)	23-1/8" (587)	20" (508)	14" (356)	16" (406)
08	39-7/8" (1013)	29-5/8" (737)	28-1/8" (714)	25" (635)	19" (483)	21" (533)
10	43-7/8" (1114)	33-5/8" (838)	32-1/8" (816)	29" (737)	23" (584)	25" (635)
12	48-7/8" (1241)	38-5/8" (965)	37-1/8" (943)	34" (864)	28" (711)	30" (762)
14	53-7/8" (1368)	43-5/8" (1092)	42-1/8" (1070)	39" (991)	33" (838)	35" (889)
16	58-7/8" (1495)	48-5/8" (1219)	47-1/8" (1197)	44" (1118)	38" (965)	40" (1016)
18	63-7/8" (1622)	53-5/8" (1346)	52-1/8" (1324)	49" (1245)	43" (1092)	45" (1143)
20	67-7/8" (1724)	57-5/8" (1448)	56-1/8" (1426)	53" (1346)	47" (1194)	49" (1245)

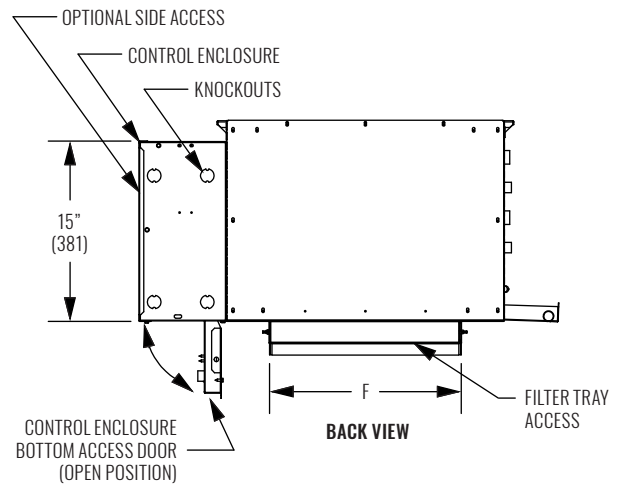
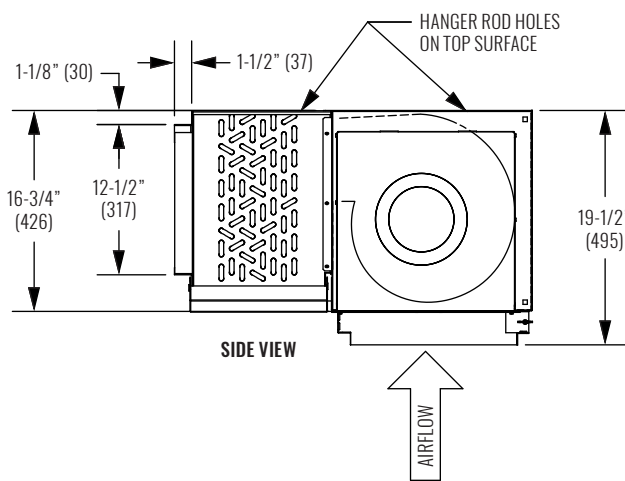
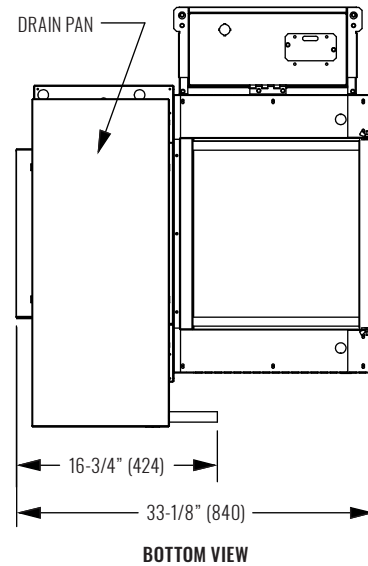
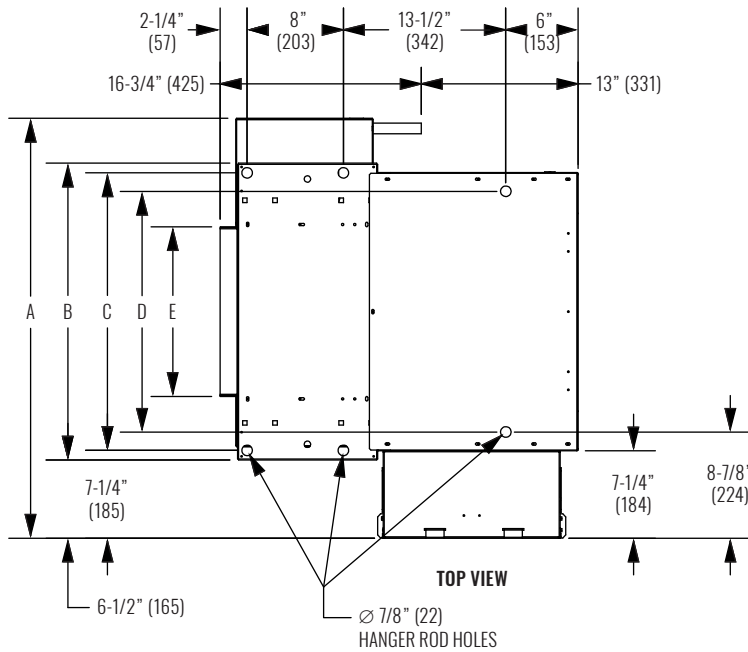
NOTES:

1. All dimensions in inches (millimeters). All dimensions $\pm 1/4"$ (6mm). Metric values are soft conversion.
2. Right hand unit shown, left hand unit opposite.
3. Standard control enclosure is mounted on unit side opposite cooling coil connections and includes (4) knockouts on (2) sides. Provide sufficient clearance to access electrical controls and comply with applicable codes and ordinances.

FAN COIL UNITS | HORIZONTAL, HIGH CAPACITY

KHG - SERIES A

DIMENSIONAL DATA | KHGP | BOTTOM RETURN, 2-PIPE OR 4-PIPE, WITHOUT ELECTRIC HEAT



UNIT SIZE	A	B	C	D	E	F
06	34-7/8" (886)	24-5/8" (721)	23-1/8" (587)	20" (508)	14" (356)	16" (406)
08	39-7/8" (1013)	29-5/8" (737)	28-1/8" (714)	25" (635)	19" (483)	21" (533)
10	43-7/8" (1114)	33-5/8" (838)	32-1/8" (816)	29" (737)	23" (584)	25" (635)
12	48-7/8" (1241)	38-5/8" (965)	37-1/8" (943)	34" (864)	28" (711)	30" (762)
14	53-7/8" (1368)	43-5/8" (1092)	42-1/8" (1070)	39" (991)	33" (838)	35" (889)
16	58-7/8" (1495)	48-5/8" (1219)	47-1/8" (1197)	44" (1118)	38" (965)	40" (1016)
18	63-7/8" (1622)	53-5/8" (1346)	52-1/8" (1324)	49" (1245)	43" (1092)	45" (1143)
20	67-7/8" (1724)	57-5/8" (1448)	56-1/8" (1426)	53" (1346)	47" (1194)	49" (1245)

NOTES:

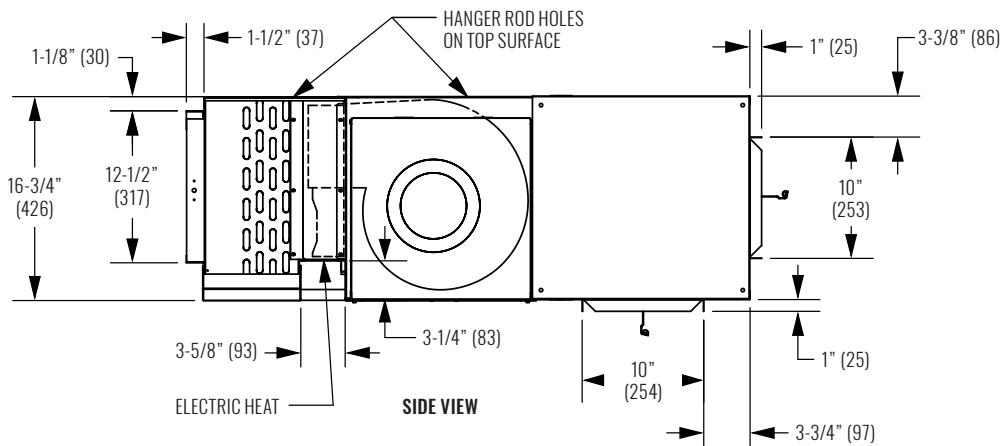
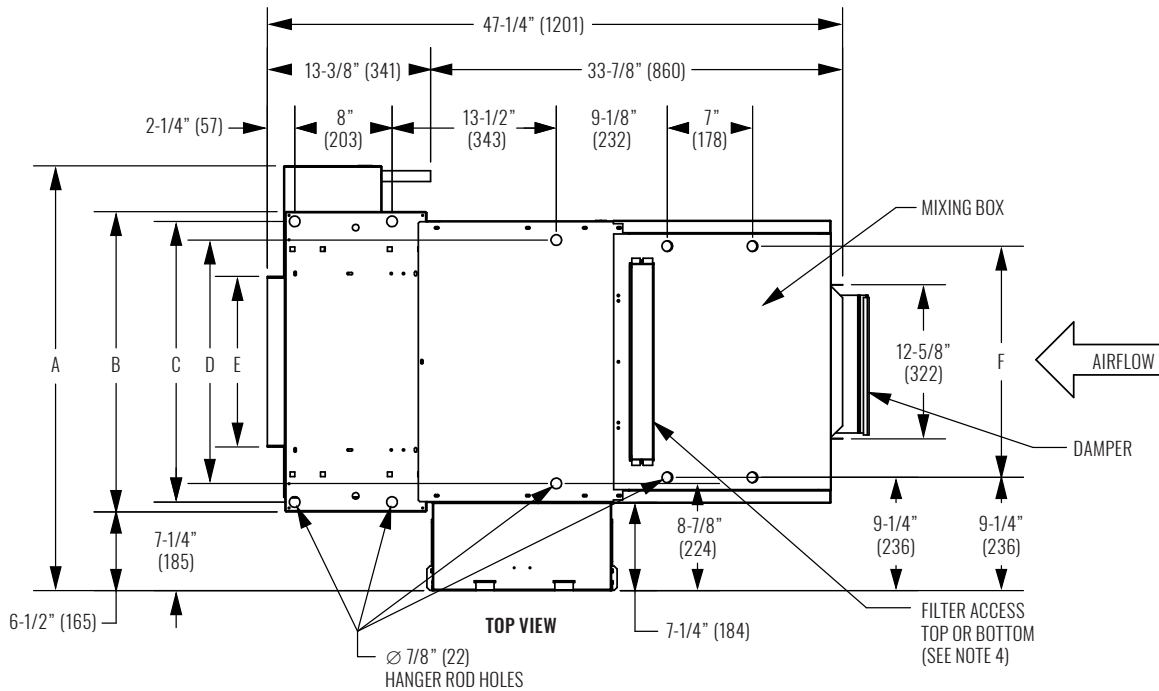
1. All dimensions in inches (millimeters). All dimensions $\pm 1/4"$ (6mm). Metric values are soft conversion.
2. Right hand unit shown, left hand unit opposite.
3. Standard control enclosure is mounted on unit side opposite cooling coil connections and includes (4) knockouts on (2) sides. Provide sufficient clearance to access electrical controls and comply with applicable codes and ordinances.

KHG - SERIES A

Horizontal | High Capacity



DIMENSIONAL DATA | KHGP | WITH ELECTRIC HEAT, WITH MIXING BOX



UNIT SIZE	A	B	C	D	E	F
06	34-7/8" (886)	24-5/8" (721)	23-1/8" (587)	20" (508)	14" (356)	19" (483)
08	39-7/8" (1013)	29-5/8" (737)	28-1/8" (714)	25" (635)	19" (483)	24" (610)
10	43-7/8" (1114)	33-5/8" (838)	32-1/8" (816)	29" (737)	23" (584)	28" (711)
12	48-7/8" (1241)	38-5/8" (965)	37-1/8" (943)	34" (864)	28" (711)	33" (838)
14	53-7/8" (1368)	43-5/8" (1092)	42-1/8" (1070)	39" (991)	33" (838)	38" (965)
16	58-7/8" (1495)	48-5/8" (1219)	47-1/8" (1197)	44" (1118)	38" (965)	43" (1092)
18	63-7/8" (1622)	53-5/8" (1346)	52-1/8" (1324)	49" (1245)	43" (1092)	48" (1219)
20	67-7/8" (1724)	57-5/8" (1448)	56-1/8" (1426)	53" (1346)	47" (1194)	52" (1321)

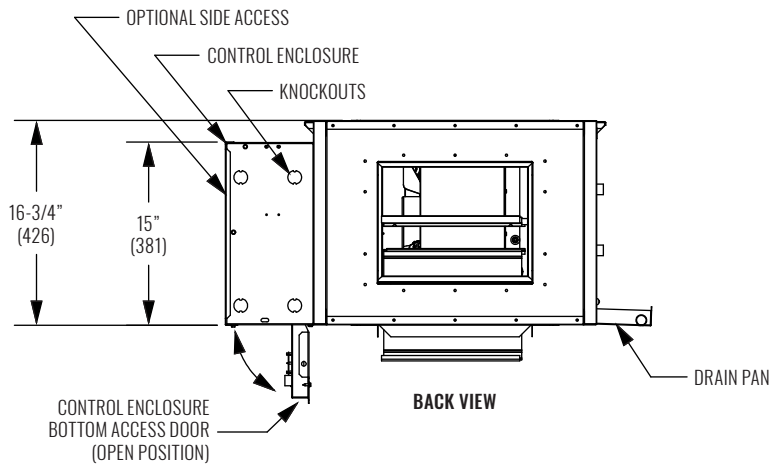
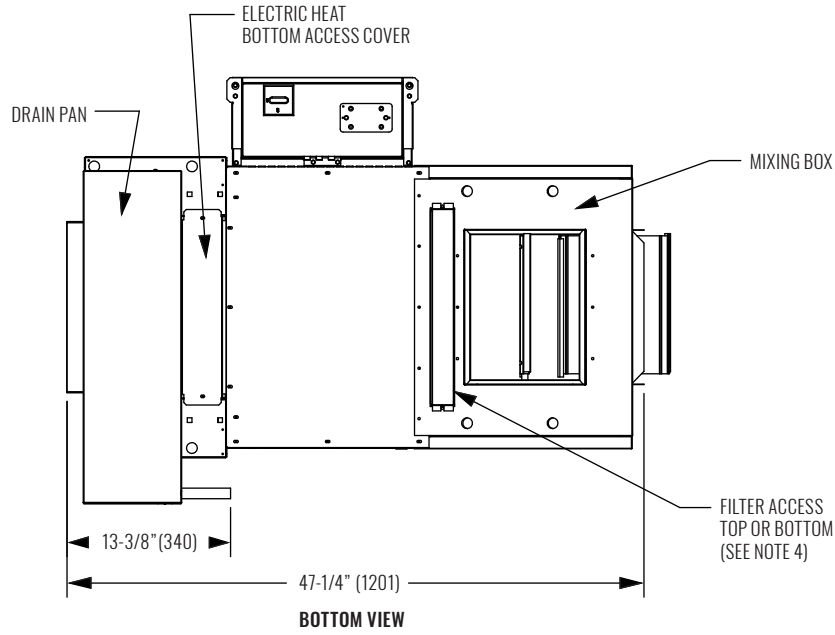
NOTES:

- All dimensions in inches (millimeters). All dimensions $\pm 1/4"$ (6mm). Metric values are soft conversion.
- Right hand unit shown, left hand unit opposite.
- Standard control enclosure is mounted on unit side opposite cooling coil connections and includes (4) knockouts on (2) sides. Provide sufficient clearance to access electrical controls and comply with applicable codes and ordinances.
- No side filter access with mixing box.

FAN COIL UNITS | HORIZONTAL, HIGH CAPACITY

KHG - SERIES A

DIMENSIONAL DATA | KHGP | WITH ELECTRIC HEAT, WITH MIXING BOX



NOTES:

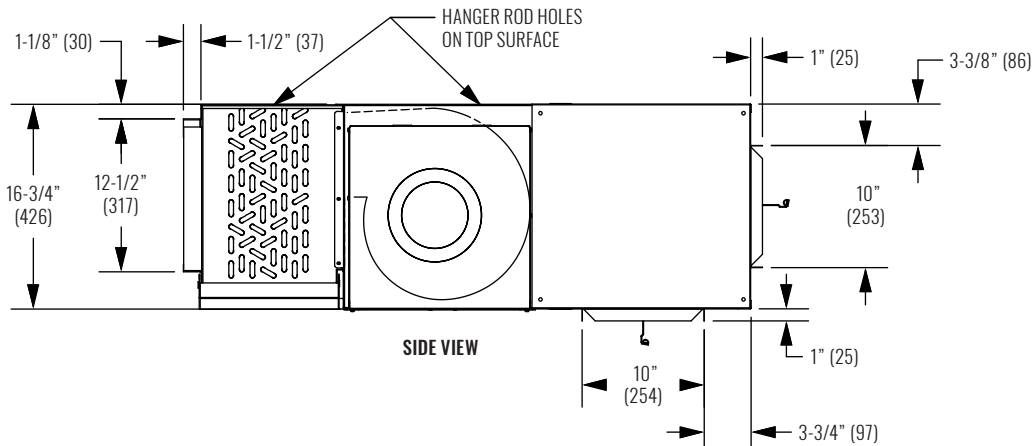
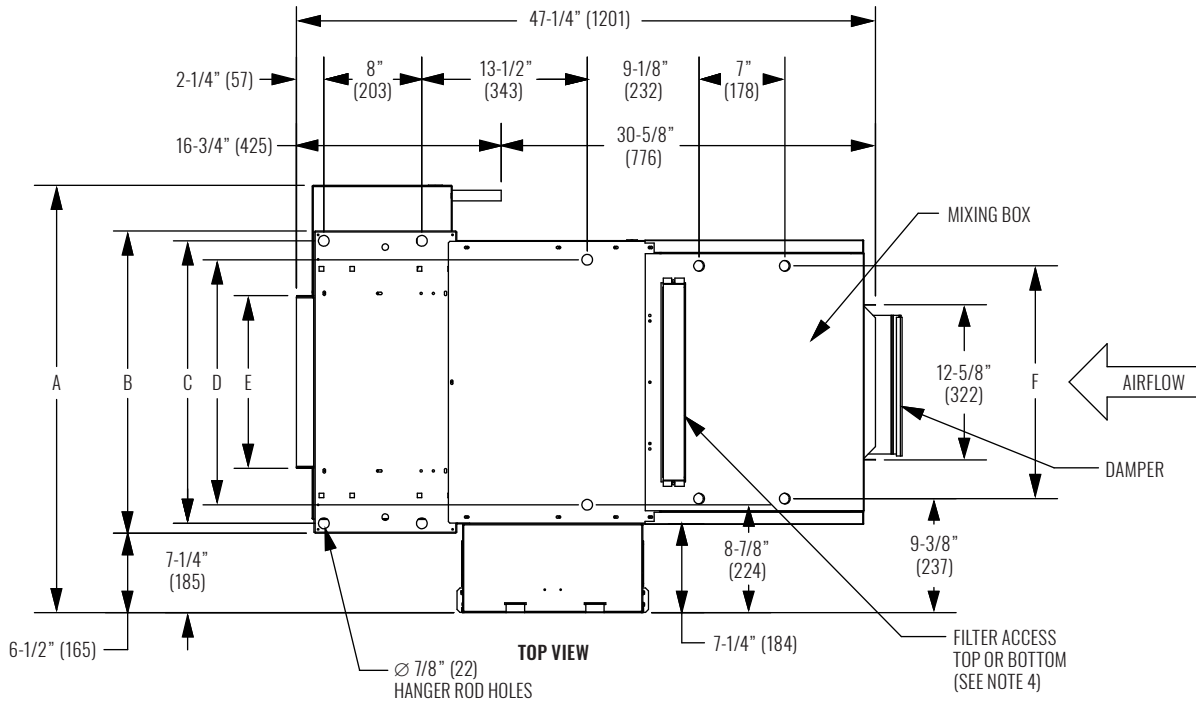
1. All dimensions in inches (millimeters). All dimensions $\pm 1/4"$ (6mm). Metric values are soft conversion.
2. Right hand unit shown, left hand unit opposite.
3. Standard control enclosure is mounted on unit side opposite cooling coil connections and includes (4) knockouts on (2) sides. Provide sufficient clearance to access electrical controls and comply with applicable codes and ordinances.
4. No side filter access with mixing box.

KHG - SERIES A

Horizontal | High Capacity



DIMENSIONAL DATA | KHGP | WITH MIXING BOX, WITHOUT ELECTRIC HEAT



UNIT SIZE	A	B	C	D	E	F
06	34-7/8" (886)	24-5/8" (721)	23-1/8" (587)	20" (508)	14" (356)	19" (483)
08	39-7/8" (1013)	29-5/8" (737)	28-1/8" (714)	25" (635)	19" (483)	24" (610)
10	43-7/8" (1114)	33-5/8" (838)	32-1/8" (816)	29" (737)	23" (584)	28" (711)
12	48-7/8" (1241)	38-5/8" (965)	37-1/8" (943)	34" (864)	28" (711)	33" (838)
14	53-7/8" (1368)	43-5/8" (1092)	42-1/8" (1070)	39" (991)	33" (838)	38" (965)
16	58-7/8" (1495)	48-5/8" (1219)	47-1/8" (1197)	44" (1118)	38" (965)	43" (1092)
18	63-7/8" (1622)	53-5/8" (1346)	52-1/8" (1324)	49" (1245)	43" (1092)	48" (1219)
20	67-7/8" (1724)	57-5/8" (1448)	56-1/8" (1426)	53" (1346)	47" (1194)	52" (1321)

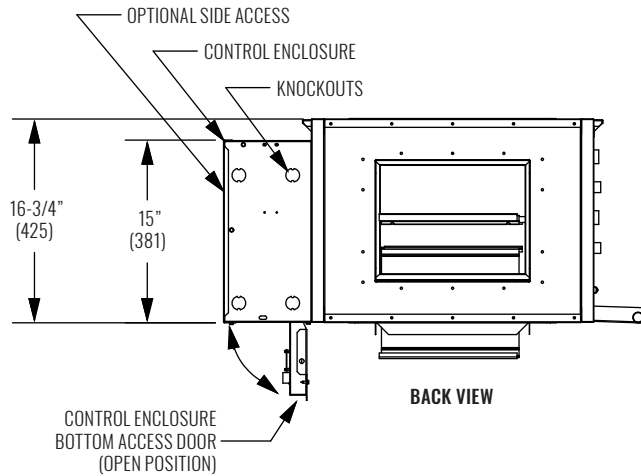
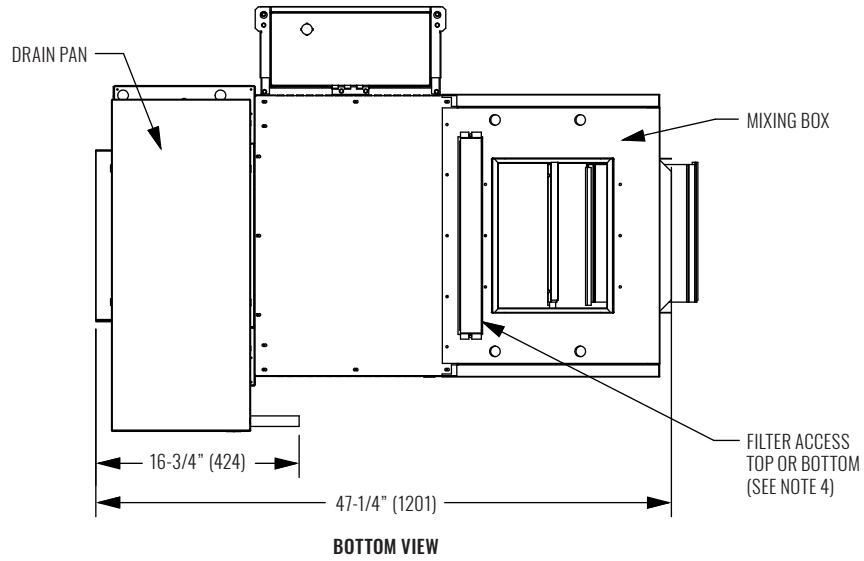
NOTES:

- All dimensions in inches (millimeters). All dimensions $\pm 1/4"$ (6mm). Metric values are soft conversion.
- Right hand unit shown, left hand unit opposite.
- Standard control enclosure is mounted on unit side opposite cooling coil connections and includes (4) knockouts on (2) sides. Provide sufficient clearance to access electrical controls and comply with applicable codes and ordinances.
- No side filter access with mixing box.

FAN COIL UNITS | HORIZONTAL, HIGH CAPACITY

KHG - SERIES A

DIMENSIONAL DATA | KHGP | WITH MIXING BOX, WITHOUT ELECTRIC HEAT



NOTES:

1. All dimensions in inches (millimeters). All dimensions $\pm 1/4$ " (6mm). Metric values are soft conversion.
2. Right hand unit shown, left hand unit opposite.
3. Standard control enclosure is mounted on unit side opposite cooling coil connections and includes (4) knockouts on (2) sides. Provide sufficient clearance to access electrical controls and comply with applicable codes and ordinances.
4. No side filter access with mixing box.

KHG - SERIES A

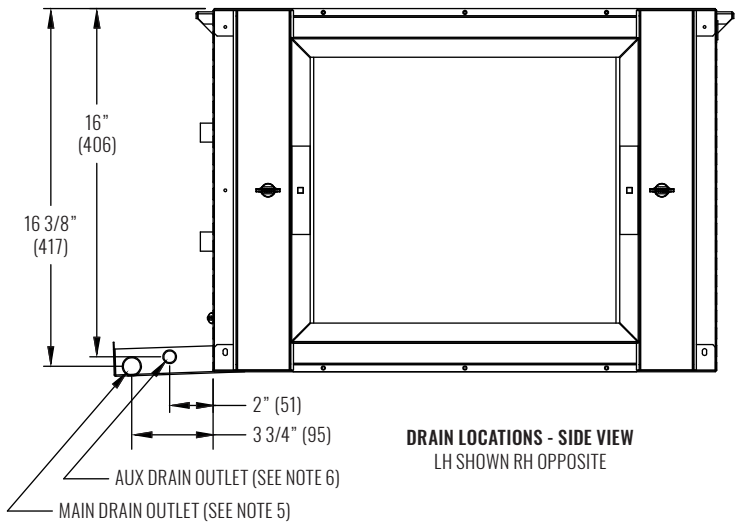
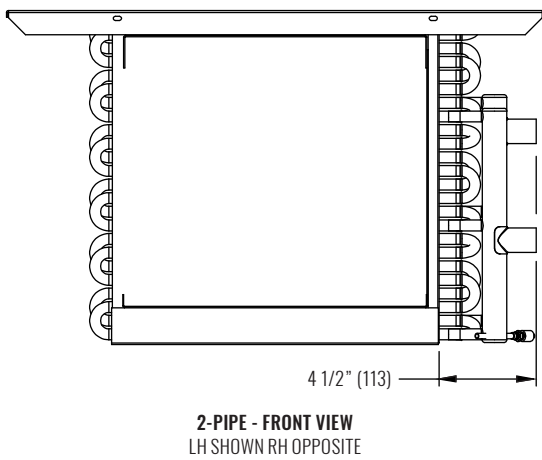
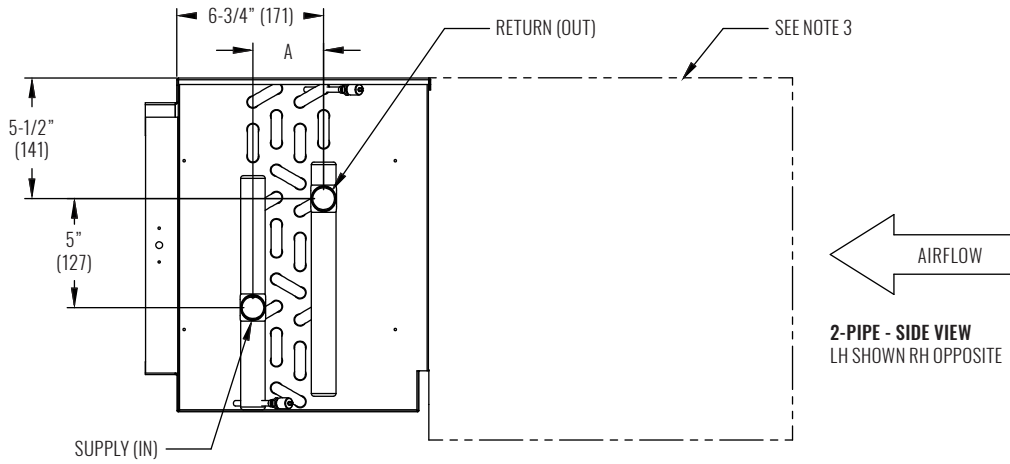
Horizontal | High Capacity



DIMENSIONAL DATA | KHGP, KHGH | FIELD CONNECTIONS, 2-PIPE

FAN COIL UNITS | HORIZONTAL, HIGH CAPACITY

KHG - SERIES A

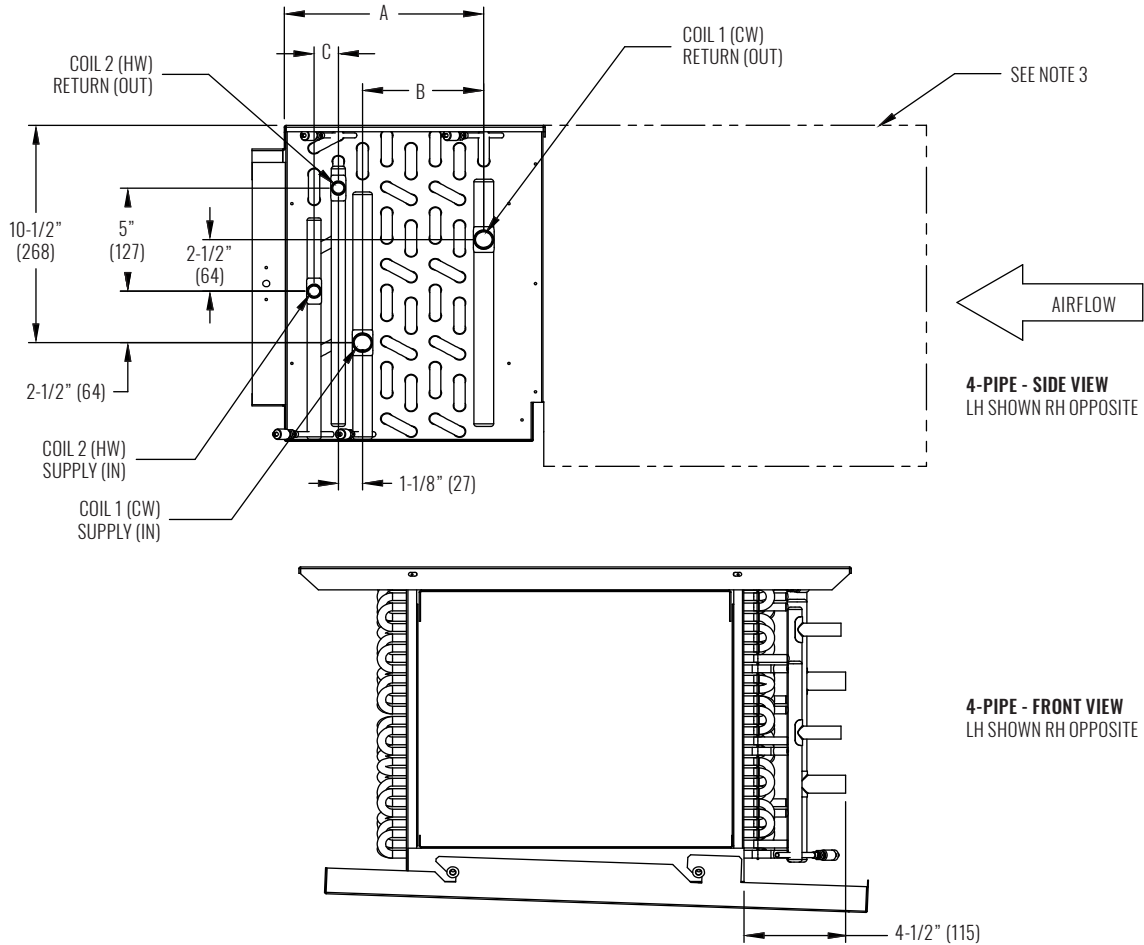


UNIT SIZE	COIL ROWS	A (1/2" Ø COIL)	A (3/8" Ø COIL)
2-PIPE HEATING	1	1-1/8" (29) *	7/8" (22) *
	2	1-1/8" (29)	7/8" (22)
	3	2-1/8" (54)	1-3/4" (44)
	4	3-1/4" (83)	2-5/8" (67)
2-PIPE COOLING	3	2-1/8" (54)	1-3/4" (44)
	4	3-1/4" (83)	2-5/8" (67)
	6	5-3/8" (137)	4-3/8" (86)

NOTES:

1. All dimensions in inches (millimeters). All dimensions $\pm 1/2"$ (13mm). Metric values are soft conversion.
 2. All drawings subject to change without notice.
 3. Model "KHGP" unit shown, typical for model "KHGH" units. Connections shown are internal on "KHGE" units.
 4. Connection Size: See submittal.
 5. Standard externally foam coated galvanize steel drain pan has 7/8" ODM copper outlet. Stainless steel drain pan has 3/4" MPT galvanize steel outlet.
 6. Auxiliary drain outlet is 5/8" ODM copper or 3/8" MPT galvanized steel respectively.
- * Single row / single circuit headers are vertical (horizontal distance is 0").

DIMENSIONAL DATA | KHGP, KHGH | FIELD CONNECTIONS, 4-PIPE, 1/2" COIL, REHEAT



FAN COIL UNITS | HORIZONTAL, HIGH CAPACITY

KHG - SERIES A

UNIT TYPE: 4-PIPE REHEAT				
COIL 1 CW ROWS	COIL 2 HW ROWS	1/2" COIL Ø		
		A	B	C
3	1	6-3/4" (171)	1-5/8" (143)	1-1/4" (32) *
3	2	6-3/4" (171)	1-7/8" (48)	1-1/8" (29)
3	3	6-3/4" (171)	2" (51)	2-1/4" (57)
4	1	6-3/4" (171)	3" (76)	1-1/4" (32) *
4	2	6-3/4" (171)	3" (76)	1-1/8" (29)
3	4	8-7/8" (225)	2" (51)	3-1/4" (83)
4	3	8-7/8" (225)	3-1/4" (83)	2" (51)
4	4	8-7/8" (225)	3-1/4" (83)	3-1/4" (83)
6	1	8-7/8" (225)	5" (127)	1-1/8" (29) *
6	2	8-7/8" (225)	5-1/4" (133)	1-1/8" (29)

NOTES:

1. All dimensions in inches (millimeters). All dimensions $\pm 1/2"$ (13mm). Metric values are soft conversion.
 2. All drawings subject to change without notice.
 3. Model "KHGP" unit shown, typical for model "KHGH" units. Connections shown are internal on "KHGE" units.
 4. Connection Size: See submittal.
 5. Standard externally foam coated galvanized steel drain pan has 7/8" ODM copper outlet. Stainless steel drain pan has 3/4" MPT galvanized steel outlet.
 6. Auxiliary drain outlet is 5/8" ODM copper or 3/8" MPT galvanized steel respectively.
- * Single row / single circuit headers are vertical (horizontal distance is 0").

KHG - SERIES A

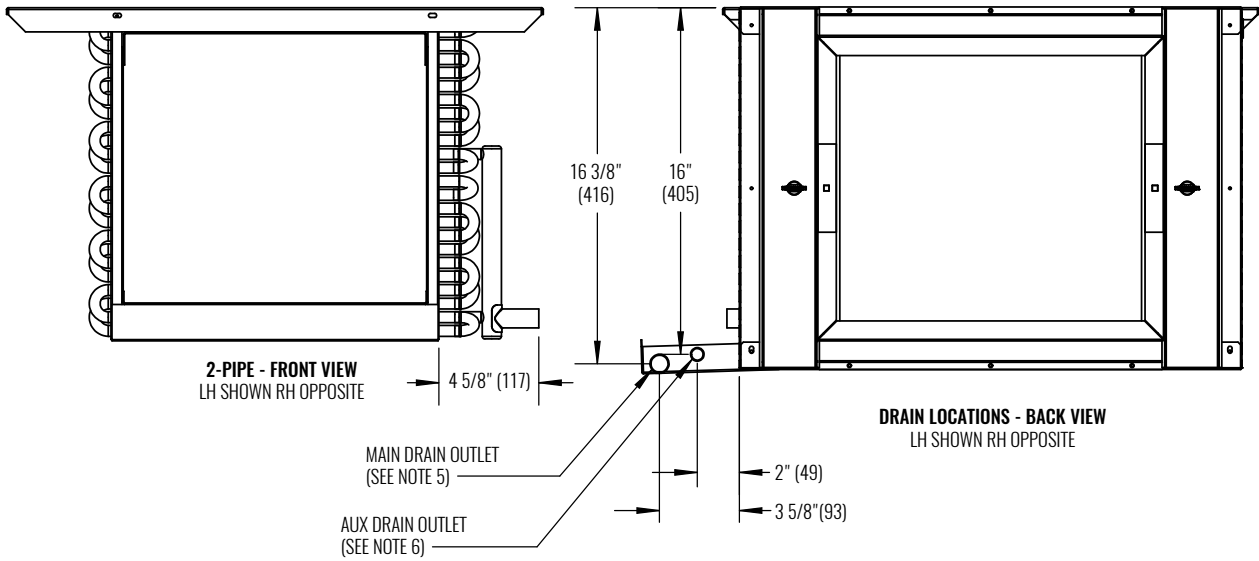
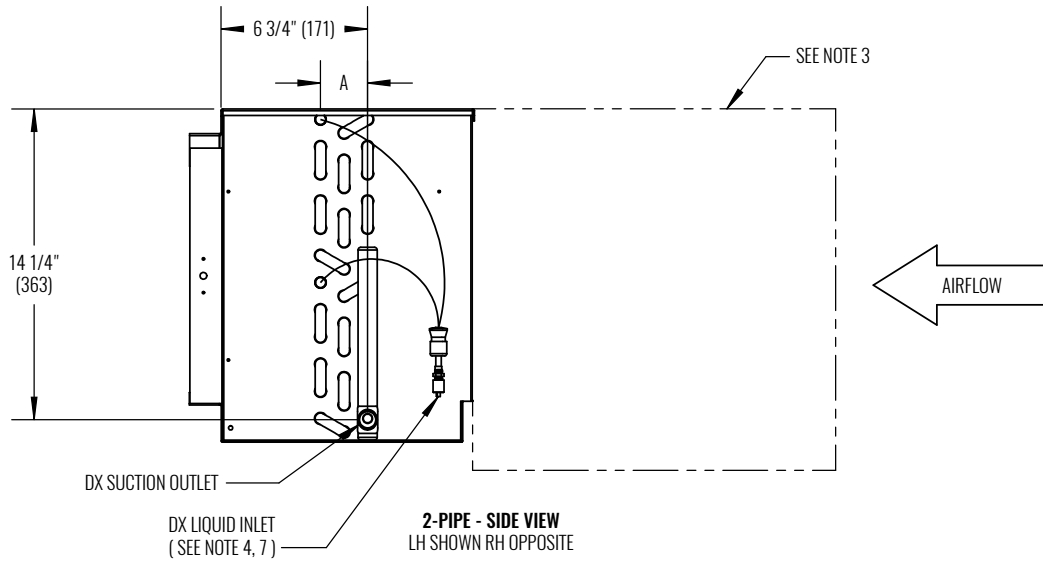
Horizontal | High Capacity



DIMENSIONAL DATA | KHGP, KHGH | FIELD CONNECTIONS, 2-PIPE, DX COIL

FAN COIL UNITS | HORIZONTAL, HIGH CAPACITY

KHG - SERIES A

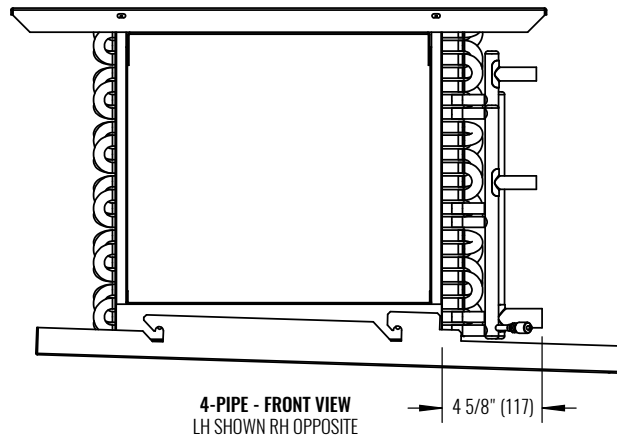
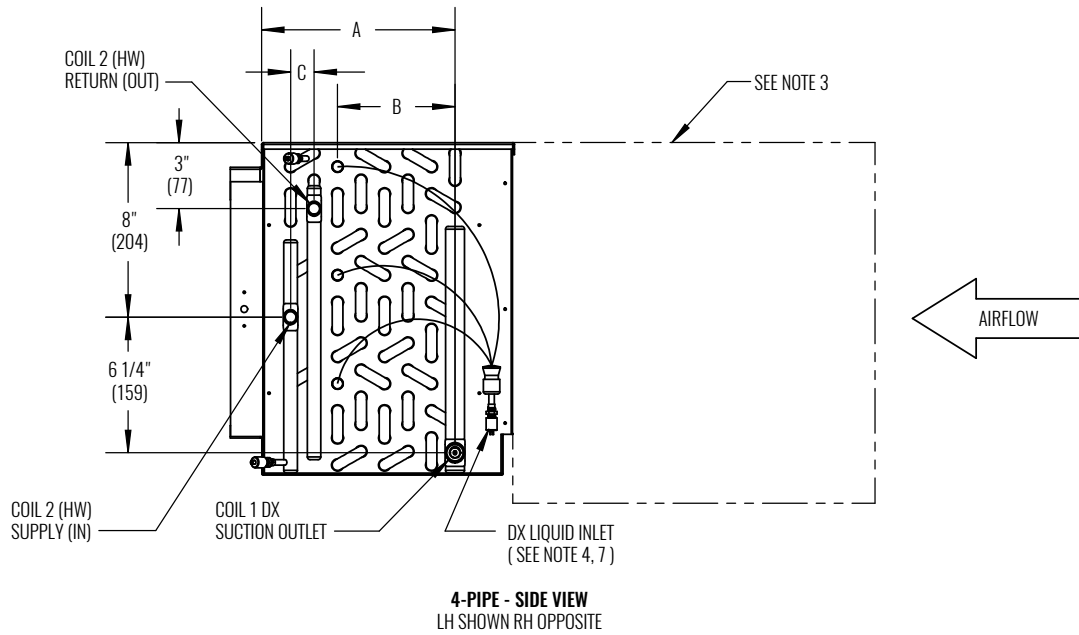


UNIT TYPE	DX COIL ROWS	A (1/2" Ø COIL)
2-PIPE COOLING	3	2-1/8" (55)
	4	3-1/4" (82)
	6	5-3/8" (137)

NOTES:

1. All dimensions are inches (millimeters). All dimensions 1/2" (13mm). Metric values are soft conversion.
2. All drawings subject to change without notice.
3. Model "KHGP" unit shown, typical for model "KHGH" units. Connections shown are internal on "KHGE" units.
4. Connection Size: See submittal.
5. Standard externally foam coated galvanize steel drain pan has 7/8" ODM copper outlet. Stainless steel drain pan has 3/4" MPT galvanize steel outlet.
6. Auxiliary drain outlet is 5/8" ODM copper or 3/8" MPT galvanized steel, respectively.
7. Liquid inlet arrangement may vary.

DIMENSIONAL DATA | KHGP, KHGH | FIELD CONNECTIONS, 4-PIPE, 1/2" DX COIL, REHEAT



UNIT TYPE: 4-PIPE REHEAT				
COIL 1 DX ROWS	COIL 2 HW ROWS	1/2" COIL Ø		
		A	B	C
3	1	6-3/4" (171)	2-1/8" (52)	7/8" (22) *
3	2	6-3/4" (171)	2-1/8" (52)	1-1/8" (29)
3	3	6-3/4" (171)	2-1/8" (52)	2-1/8" (54)
4	1	6-3/4" (171)	3-1/4" (83)	1" (25.5) *
4	2	6-3/4" (171)	3-1/4" (83)	1" (25.5)
3	4	8-7/8" (225)	2-1/8" (52)	3-1/4" (83)
4	3	8-7/8" (225)	3-1/4" (83)	2-1/4" (54)
4	4	8-7/8" (225)	3-1/4" (83)	3-1/4" (83)
6	1	8-7/8" (225)	5-1/2" (140)	7/8" (22) *
6	2	8-7/8" (225)	5-1/2" (140)	1-1/8" (27)

NOTES:

1. All dimensions are inches (millimeters). All dimensions 1/2" (13mm). Metric values are soft conversion.
 2. All drawings subject to change without notice.
 3. Model "KHGP" unit shown, typical for model "KHGH" units. Connections shown are internal on "KHGE" units.
 4. Connection Size: See submittal.
 5. Standard externally foam coated galvanize steel drain pan has 7/8" ODM copper outlet. Stainless steel drain pan has 3/4" MPT galvanize steel outlet.
 6. Auxiliary drain outlet is 5/8" ODM copper or 3/8" MPT galvanized steel, respectively.
 7. Liquid Inlet arrangement may vary.
- * Single row / single circuit headers are vertical (horizontal distance is 0").

KHG - SERIES A

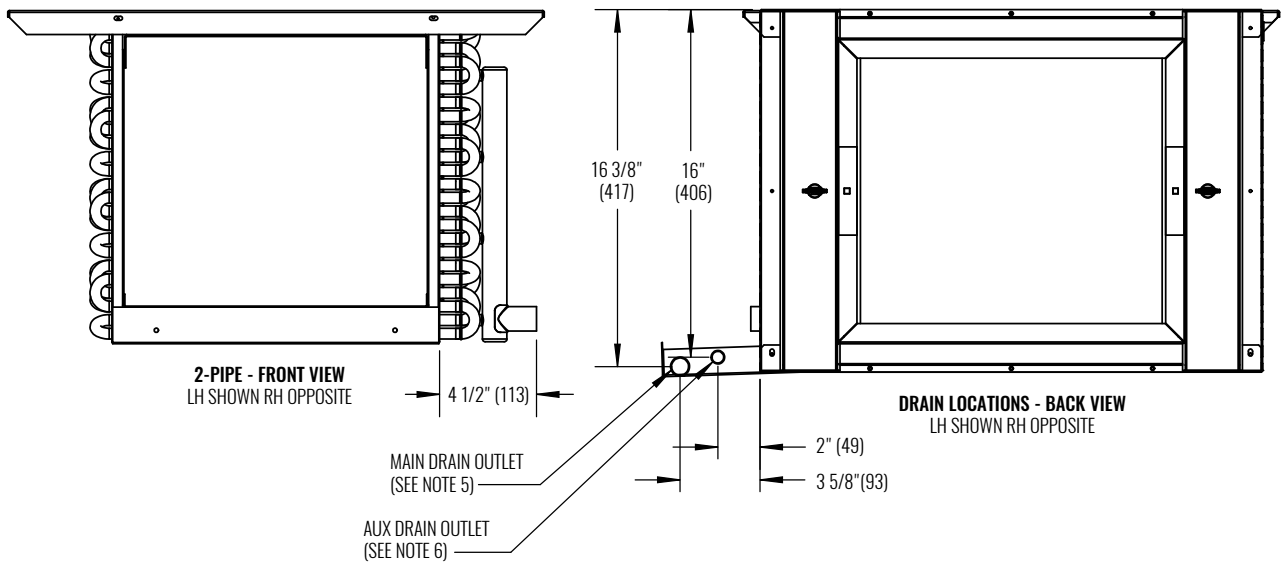
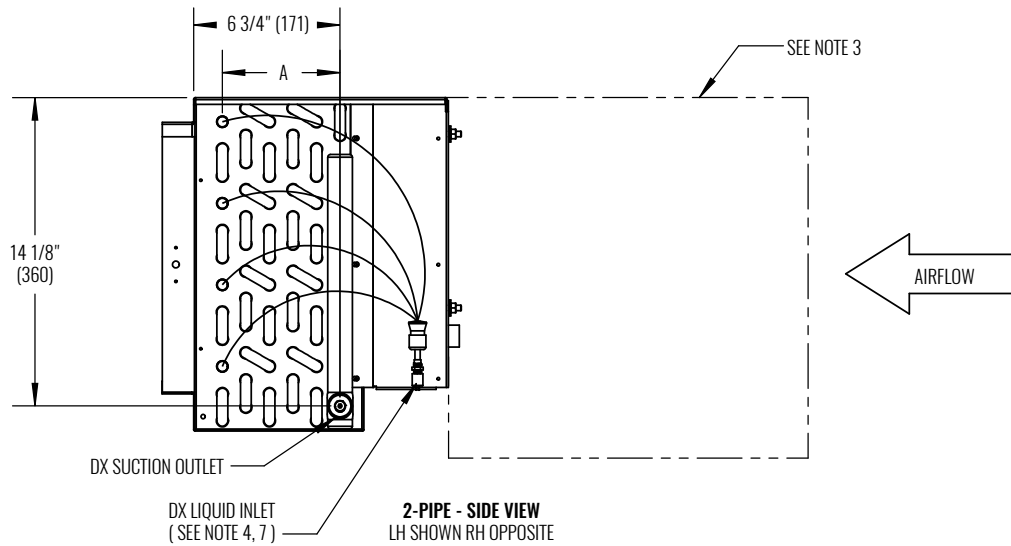
Horizontal | High Capacity



DIMENSIONAL DATA | KHGP, KHGH | FIELD CONNECTIONS, 2-PIPE, DX COIL, ELECTRIC HEAT

FAN COIL UNITS | HORIZONTAL, HIGH CAPACITY

KHG - SERIES A

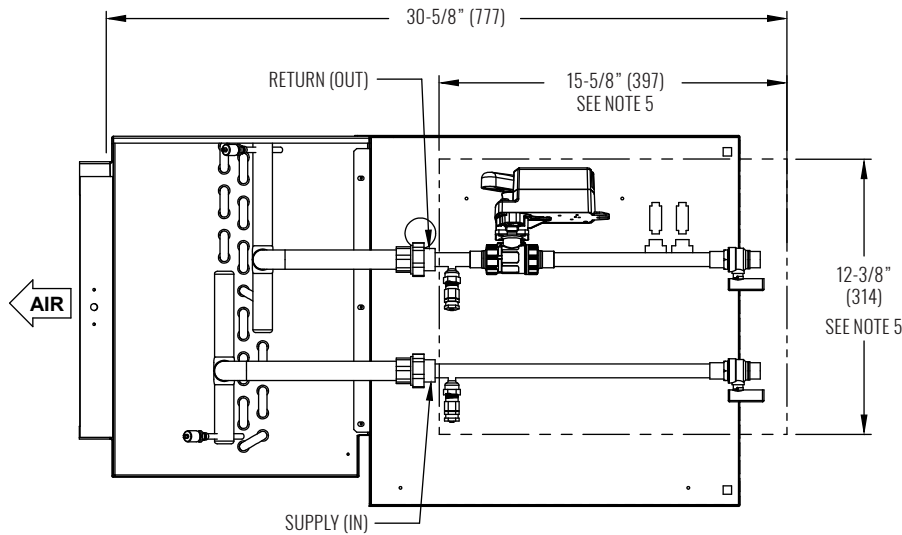


UNIT TYPE	DX COIL ROWS	A (1/2" Ø COIL)
2-PIPE COOLING	3	2-1/8" (55)
	4	3-1/4" (82)
	6	5-3/8" (137)

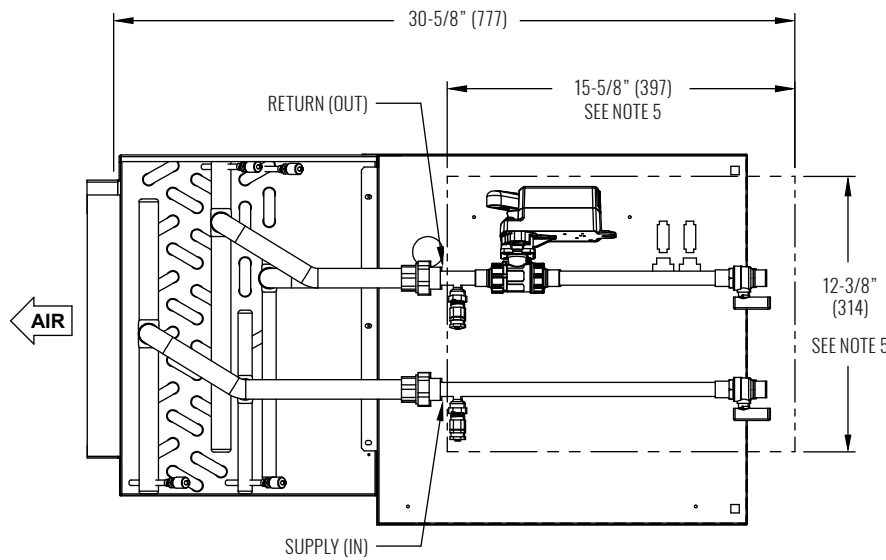
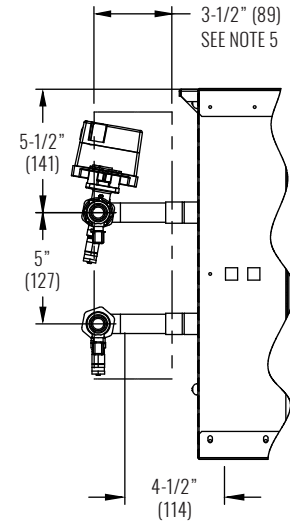
NOTES:

1. All dimensions are inches (millimeters). All dimensions 1/2" (13mm). Metric values are soft conversion.
2. All drawings subject to change without notice.
3. Model "KHGP" unit shown, typical for model "KHGH" units. Connections shown are internal on "KHGE" units.
4. Connection Size: See submittal.
5. Standard externally foam coated galvanize steel drain pan has 7/8" ODM copper outlet. Stainless steel drain pan has 3/4" MPT galvanize steel outlet.
6. Auxiliary drain outlet is 5/8" ODM copper or 3/8" MPT galvanized steel, respectively.
7. Liquid inlet arrangement may vary.

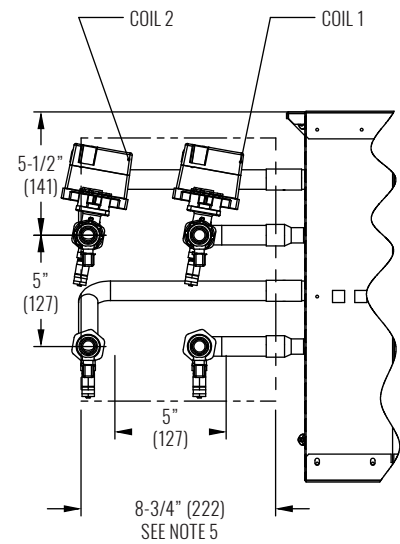
DIMENSIONAL DATA | KHGP | VALVE PACKAGE CONNECTIONS



2 - PIPE WATER COIL
LH SHOWN RH OPPOSITE



4 - PIPE WATER COIL
LH SHOWN RH OPPOSITE



NOTES:

1. All dimensions in inches (millimeters). All dimensions $\pm 1/2"$ (13mm). Metric values are soft conversion.
2. All drawings subject to change without notice.
3. See "Coil Connection Location" drawing for drain pan specifications.
4. Consult software selection summary for valve package components and specifications. Valve package end point dimensions are fixed value, regardless of selected valve package components.
5. Dimensions indicate space requirement for valve package install. Additional service space requirements depend on option selections.