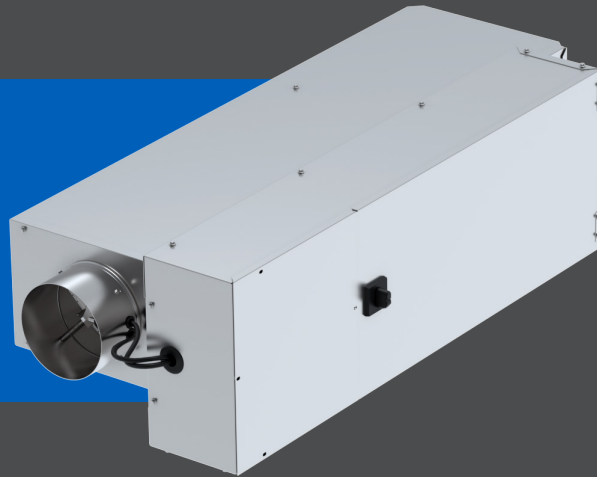


# LMHS SINGLE DUCT TERMINAL UNIT REPLACEMENT HEATER RACK GUIDE



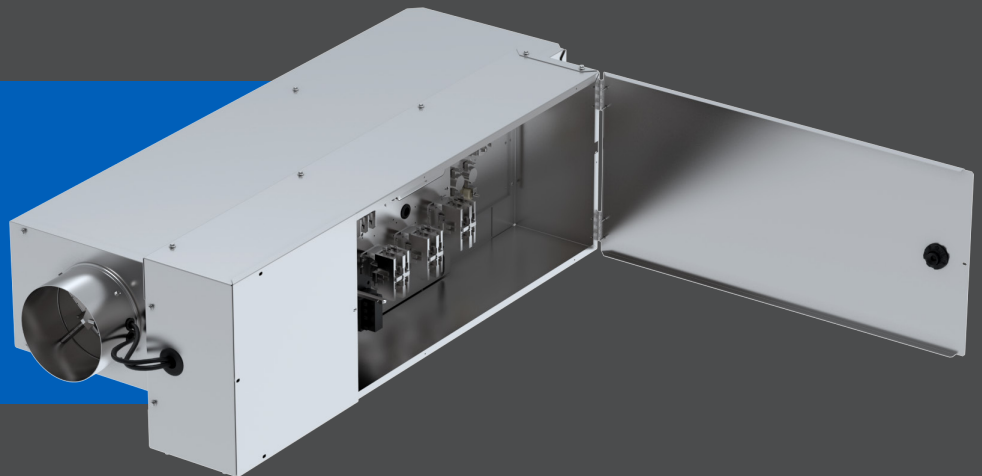
## STEP 1

- Ensure unit is not powered
- Locate the control enclosure



## STEP 2

- Engage the door interlocking disconnect switch to open the control enclosure
- Disconnect wiring attached to the heater rack



## STEP 3

- Slide-out heater rack
- Slide-in new heater rack
- Reconnect wires
- Close the door and power on

