

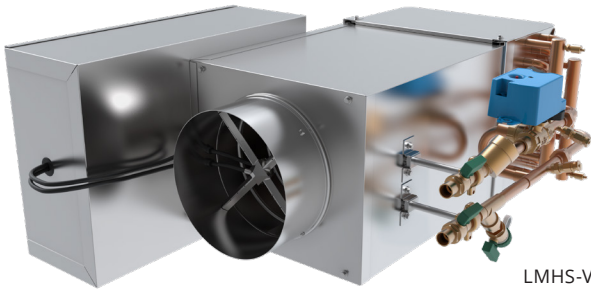
# LMHS-VP

Single Duct Terminal Unit | Valve Package

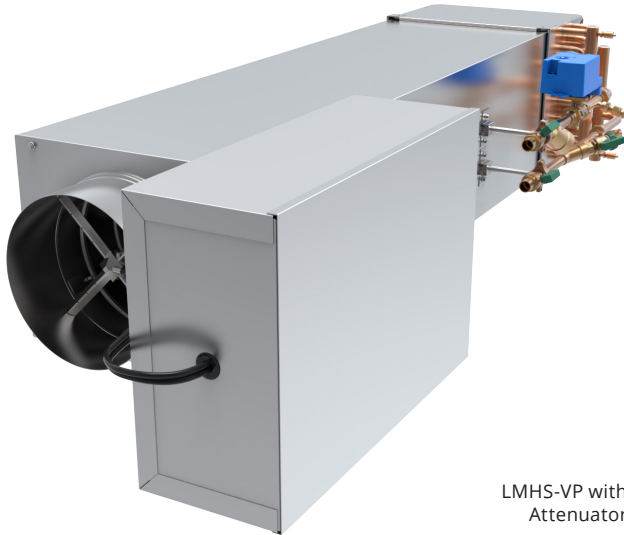


TERMINAL UNITS | SINGLE DUCT

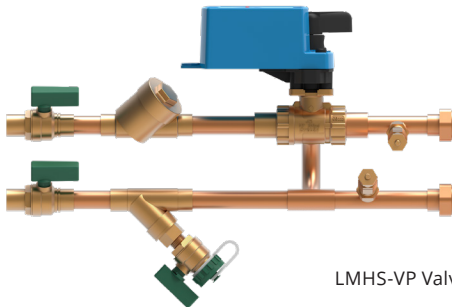
LMHS-VP



LMHS-VP



LMHS-VP with Attenuator



LMHS-VP Valve Package

## INTRODUCTION

The LMHS-VP terminal units are comprised of the same configurations and quality construction of a LMHS but is even easier to install due to a factory provided and mounted hot water coil valve package. The LMHS-VP valve package is assembled in a manufacturing setting giving you repeatable and reliable quality that is otherwise hard to replicate in a field setting without skilled labor. With multiple control options, construction options, and valve package configurations, the LMHS-VP is the easiest terminal unit to design with and to install.

## MODEL

LMHS-VP: Single Duct Terminal Unit with Factory Valve Package

## FEATURES

- 22 Gauge Galvanized steel casing construction with a 20 gauge casing option that provides strength and product durability.
- AHRI listings for certified performance in accordance with AHRI Standard 880 testing standard.
- Suitable for low, medium, or high pressure applications; able to operate throughout a wide range of HVAC systems.
- Available 6"x9" access opening for easy accessibility during routine inspections and maintenance.
- Several casing liner options provide quiet and clean operation.
- Airflow capacities from 40 to 7000 CFM, providing airflow control for most commercial applications.
- Round inlet sizes from 4" through 16" diameter, which are slightly undersized to fit standard spiral and flex duct; size 20 inlet is rectangular, 13 1/2"x7 7/8"; size 22 inlet is rectangular, 15 7/8"x23 7/8".
- Rectangular discharge with slip and drive connections, providing quick and easy connection to hot water heat coils and down stream duct work.
- Pneumatic, analog, and digital controls may be customized for many building systems. BACnet/BMS compatible digital controls can be provided by Krueger.
- K4 Lineacross four quadrant, multi-point center averaging sensor or optional linear, multiple-point, averaging velocity sensor offers low resistance to airflow while providing amplified velocity pressure signal to the controller.
- Gasketed round volume control damper operates over a full 90° range and provides a low leakage shutoff position.
- Compact unit casing sizes accommodate installation in reduced ceiling plenum spaces.
- Find Revit models at [www.krueger-hvac.com/revit](http://www.krueger-hvac.com/revit).