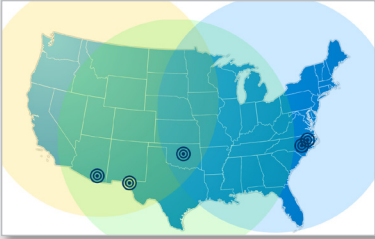


ABOUT KRUEGER



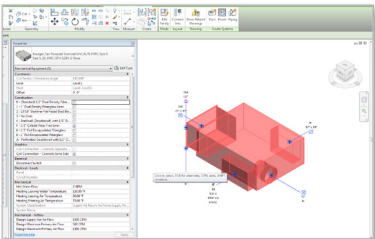
Our Customer Focus

- Developing New Products
- Providing Data Integrity
- Creating First in Class Electronic Tools
- Building Relationships
- Growing Representative Channels
- Expanding Manufacturing Locations
- Improving Operations and Processes

Our Lab and Capabilities

Krueger's robust laboratory environment allows us to quickly prepare and perform witness tests.

- Open Ceiling R&D Center
- Insitu Acoustical Evaluation Room
- Critical Room Lab Mock-up
- Hospital OR Environment
- Specialty Products Room
- Cold Wall
- Reverb Room



Our Engineering and Application Support

- Review and Assist with Specifications
- Offer Design Assist Support for Engineers Laying Out Projects
- Provide Technical Support and Troubleshooting
- Generate Drawings for New Development, Value Analysis, Niche Applications, and Special Customer Solutions

Our Training: Krueger Institute of Technology

- Providing Focused Training Programs
 - Grilles, Registers, and Diffusers
 - Terminal Units, Fan Coils, and Blower Coils
 - Air Handling Units
 - Specialty Products
 - Underfloor Products
 - Critical Room Products
 - Sales and Representation
 - Witness Testing
 - Applications & Design
- Creating Hands-on Experiences
- Leading Group Discussions
- Performing Product Demonstrations
- Entertaining Customers and Building Relationships



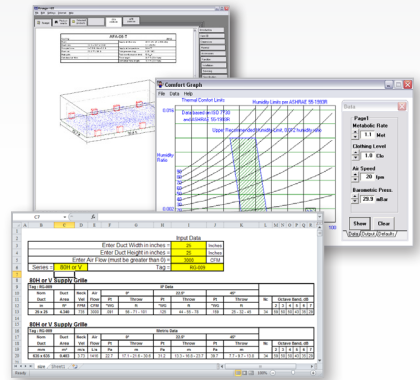
Our Greentouch Initiative

- Providing Designs for Occupant Comfort
- Offering Energy Efficient Products and Air Distribution Solutions
- Reducing Waste in our Plants
- Improving Designs of Existing Products
- Creating ADPI Charts
- Participating Member of USGBC



Our Website

- Revit (BIM) Blocks
- K-Select GRD & VAV Selection Software
- K-HIT Chilled Beam & Displacement Ventilation Selection Software
- Sound and Comfort Calculators
- Case Studies
- White Papers
- Custom Performance Data Spreadsheets
- Microsoft® PowerPoint® Presentations
- Air Distribution Blog
- Cross Reference Application
- Product Catalog and Brochures
- Frequently Asked Questions Database



Our Industry Affiliations



ASHRAE Member



ETL Listed



AHRI Listed



ISO 9001:2008 Certified