

KBVD Arr. 3

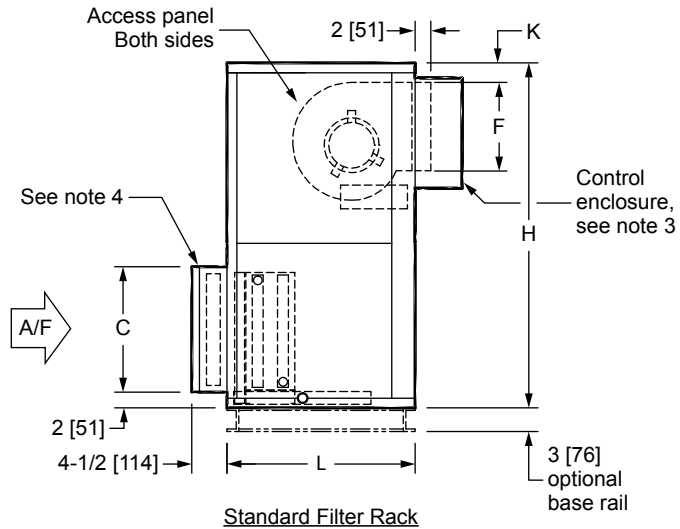
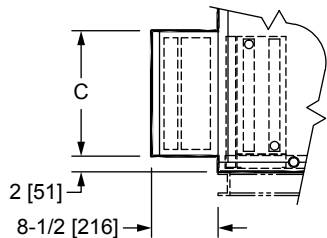
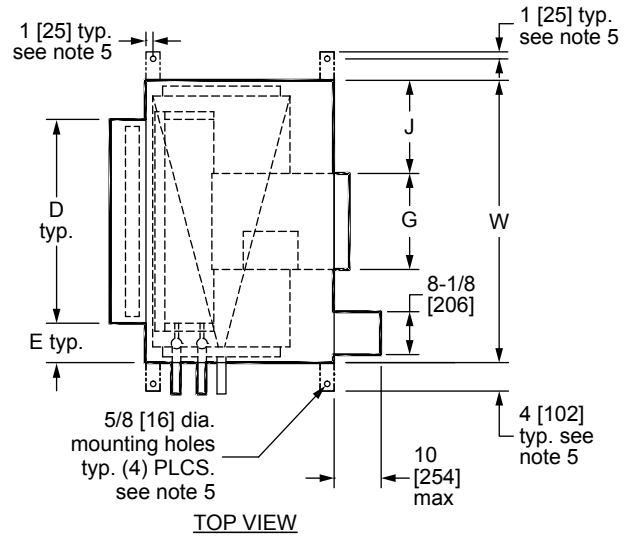
DIRECT DRIVE BLOWER COIL UNIT
DISCHARGE ARG. 3

JOB NAME _____
ENGINEER _____
CONTRACTOR _____
TAG _____

SUBMITTAL SHEET

NOTES:

- All dimensions are in Inches [millimeters].
All dimensions are $\pm 1/4"$ [6mm]. Metric values are soft conversion.
- Right hand unit shown, Left hand unit opposite.
Motor/drive location may be specified Left or Right Hand. Standard control enclosure location matches motor/drive position.
- Provide sufficient clearance to permit access to controls and comply with applicable codes and ordinances.
- See drawing BCS-KBOD-ACFR0 for filter rack details.
- Base rail is optional on the base unit. See drawing BCS-KBOD-ACEB0. Base rails must be used with mixing box.
- See coil connection detail drawings for coil connection sizes and locations.



SIDE VIEWS

| DIMENSIONS | | | | | | | | | | | |
|------------|-----------------------|-------------|--------------|--------------|-------------|------------------|----------------|-----------------|-----------------|-----------------|----------------|
| UNIT SIZE | FAN SIZE | L | W | H | C | D | E | F | G | J | K |
| 08 | 9 x 6 [229 x 152] | 24 [610] | 30 [762] | 44 [1118] | 16 [406] | 20 [508] | 5 [127] | 10-3/8 [264] | 8-3/8 [213] | 10-7/8 [276] | 2 [51] |
| 12 | 9 x 6 [229 x 152] | 24 [610] | 36 [914] | 44 [1118] | 16 [406] | 25 [635] | 5-1/2 [140] | 10-3/8 [264] | 8-3/8 [213] | 13-7/8 [352] | 2 [51] |
| 16 | 10 x 8 [254 x 203] | 24 [610] | 44 [1118] | 44 [1118] | 16 [406] | 39-1/2 [1003] | 2-1/4 [57] | 11-1/2 [292] | 10-5/8 [270] | 16-3/4 [425] | 2 [51] |
| 20 | 10 x 8 [254 x 203] | 30 [762] | 50 [1270] | 50 [1270] | 16 [406] | 44-1/2 [1130] | 2-3/4 [70] | 11-1/2 [292] | 10-5/8 [270] | 19-3/4 [502] | 2 [51] |
| 30 | 10 x 8 [254 x 203] | 30 [762] | 59 [1499] | 56 [1422] | 25 [635] | 51 [1295] | 4 [102] | 11-1/2 [292] | 10-5/8 [270] | 24-1/4 [629] | 5-1/2 [140] |
| 40 | 10 x 8 [254 x 203] | 30 [762] | 68 [1727] | 59 [1499] | 25 [635] | 59 [1499] | 4-1/2 [114] | 11-1/2 [292] | 10-5/8 [270] | 28-3/4 [730] | 5-1/2 [140] |