

KBHD Dual Blower Arr. 3

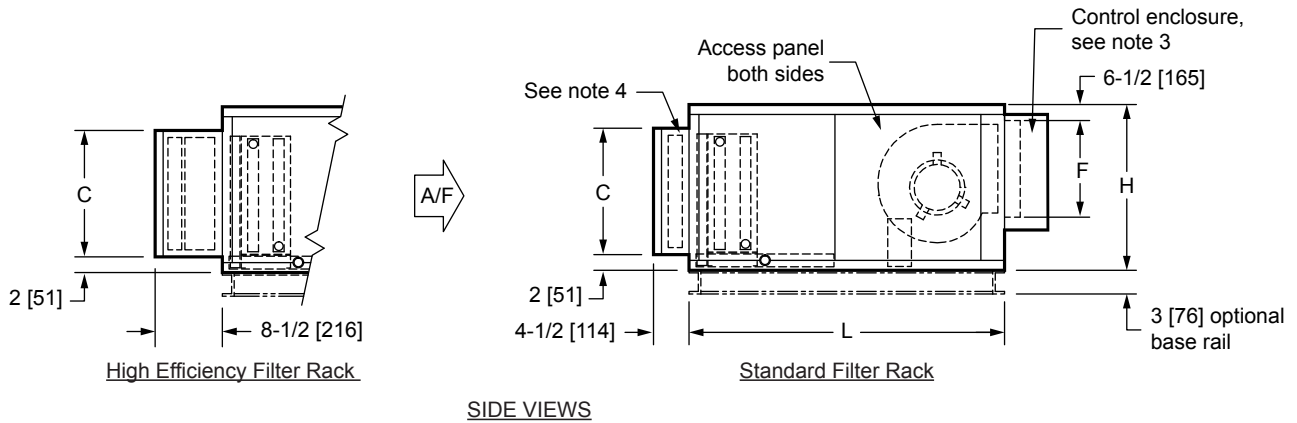
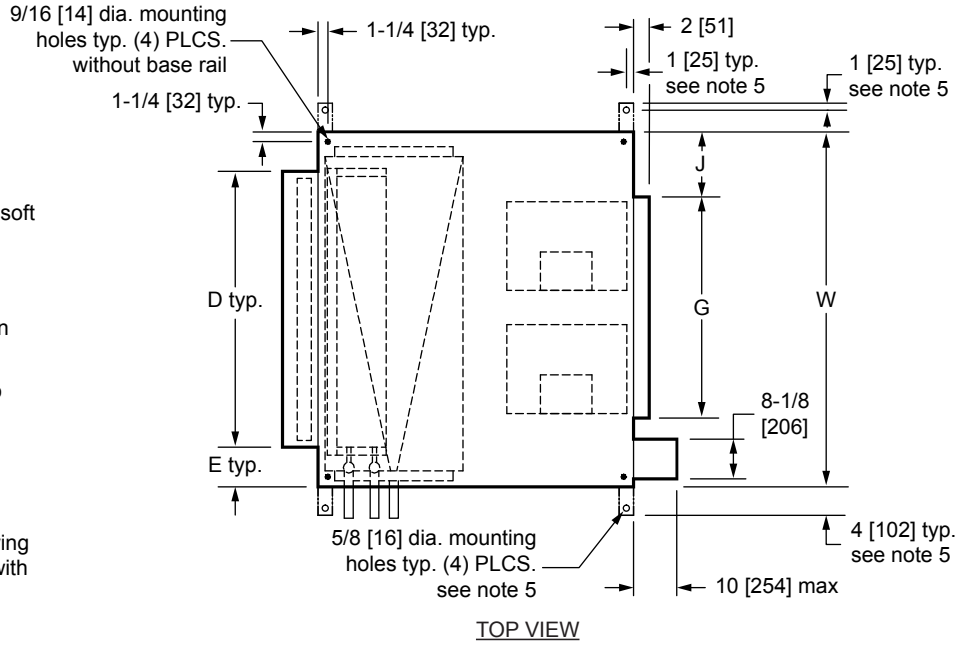
DIRECT DRIVE DUAL BLOWER COIL UNIT
DISCHARGE ARG. 3

JOB NAME _____
ENGINEER _____
CONTRACTOR _____
TAG _____

SUBMITTAL SHEET

NOTES:

1. All dimensions are in Inches [millimeters]. All dimensions are $\pm 1/4"$ [6mm]. Metric values are soft conversion.
2. Right hand unit shown, Left hand unit opposite. Motor/drive location may be specified Left or Right Hand. Standard control enclosure location matches motor/drive position.
3. Provide sufficient clearance to permit access to controls and comply with applicable codes and ordinances.
4. See drawing BCS-KBOD-ACFR0 for filter rack details.
5. Base rail is optional on the base unit. See drawing BCS-KBOD-ACEB0. Base rails must be used with mixing box.
6. See coil connection detail drawings for coil connection sizes and locations.



DIMENSIONS

| UNIT SIZE | FAN SIZE | L | W | H | C | D | E | F | G | J |
|-----------|-----------------------|--------------|--------------|-------------|-------------|--------------|----------------|-------------|-----------------|-----------------|
| 30 | 10 x 8 [254 x 203] | 46 [1168] | 59 [1499] | 30 [762] | 25 [635] | 51 [1295] | 4 [102] | 18 [457] | 36 1/2 [927] | 11 1/4 [286] |
| 40 | 10 x 8 [254 x 203] | 46 [1168] | 68 [1727] | 30 [762] | 25 [635] | 59 [1499] | 4 1/2 [114] | 18 [457] | 36 1/2 [927] | 15 3/4 [400] |