

### MODEL

- S5480 - Aluminum, heavy duty return

### FEATURES

- Aluminum, heavy duty construction
- Horizontal (H) or vertical (V) blades
- Fixed deflection, heavy duty construction
- 30° or 0° blade deflection
- 1/2" blade spacing

### GRILLE SIZES <sup>1</sup>

- Width: 4" - 72" (1/4" increments)
- Height: 4" - 72" (1/4" increments)

### FRAME STYLES

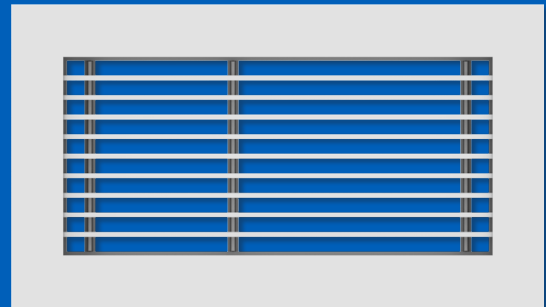
- F22 - Surface mount

### COMPATIBLE OPTIONS AND ACCESSORIES

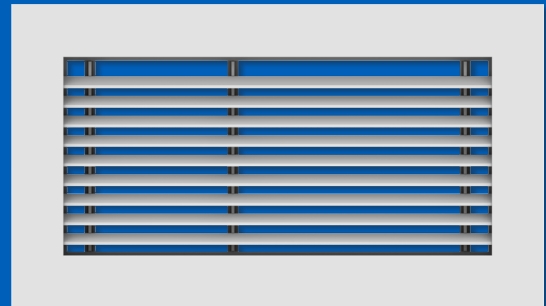
- Insect Screen
- Debris Screen
- Earthquake Tab
- S5480BD - Aluminum, heavy duty damper

NOTES: Not all options available with all configurations. Many options not compatible with other options. Size limitations on accessories. See website for complete compatibility.

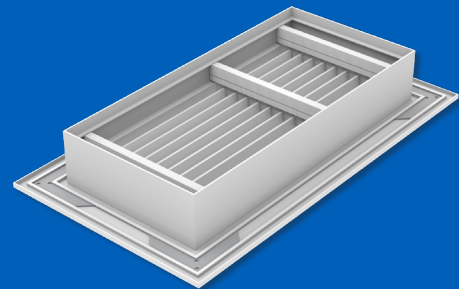
<sup>1</sup> Minimum order size 6"x4" or 4"x6". Maximum order size 72"x48" or 48"x72". Oversized units provided in multiple sections.



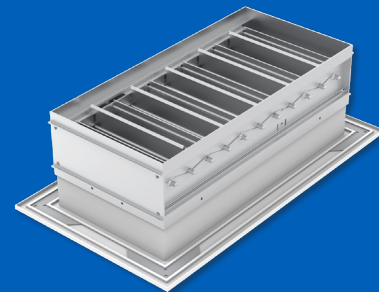
S5480 - 0° Deflection



S5480 30° Deflection



S5480 without Damper



S5480 with Damper

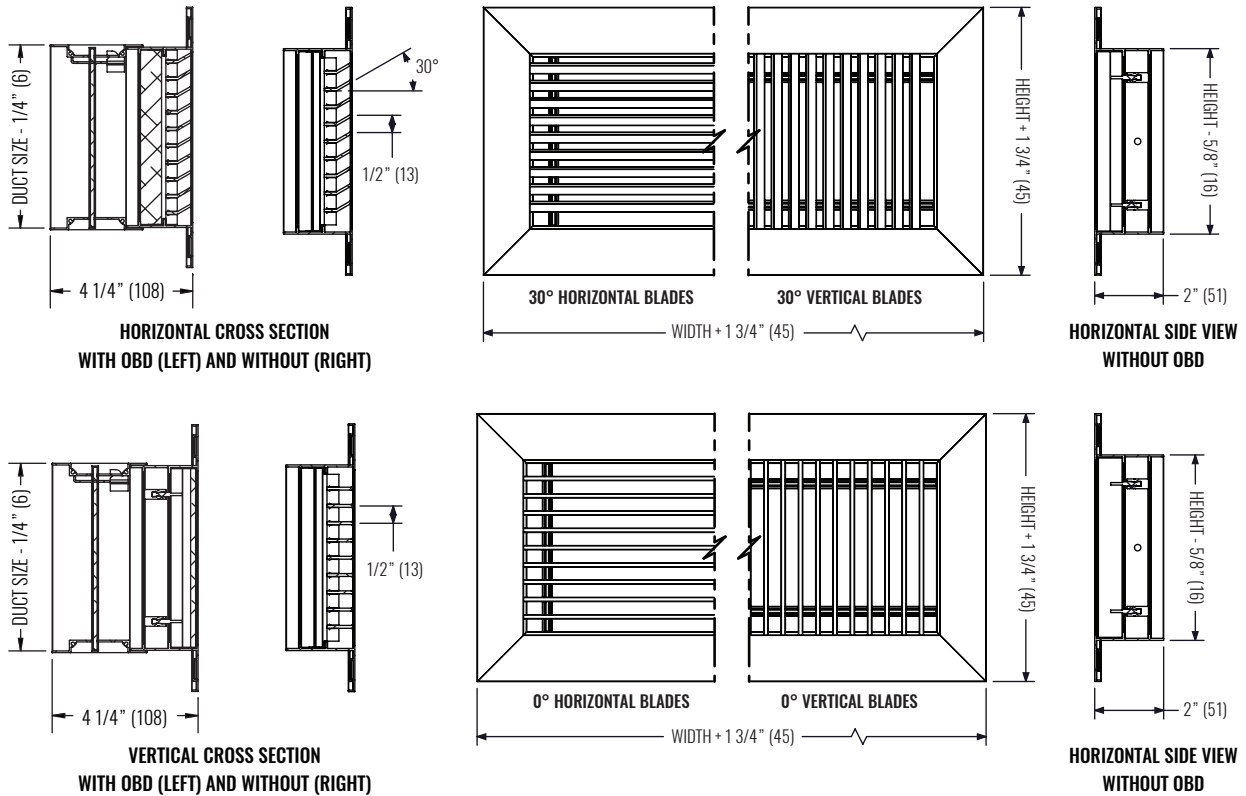
**WEB SEARCH: S5480**

# S5480

Return Grille, Heavy Duty, Aluminum



## DIMENSIONAL DATA



NOTES: Dimensions in parentheses are millimeters (mm).

## PERFORMANCE DATA

SIZE	PERFORMANCE		SIZE	PERFORMANCE	
	NC (< 25)	NC (25 - 40)		NC (< 25)	NC (25 - 40)
NOMINAL	CFM	CFM	NOMINAL	CFM	CFM
<b>0° DEFLECTION</b>			<b>30° DEFLECTION</b>		
8"x8"	50 - 225	269 - 400	8"x8"	75 - 200	231 - 325
10"x6"	75 - 213	247 - 350	10"x6"	75 - 175	200 - 275
10"x10"	100 - 375	444 - 650	10"x10"	125 - 313	359 - 500
12"x6"	50 - 250	300 - 450	12"x6"	75 - 213	247 - 350
12"x8"	75 - 350	419 - 625	12"x8"	125 - 300	344 - 475
12"x12"	125 - 550	656 - 975	12"x12"	150 - 450	525 - 750
14"x14"	200 - 775	919 - 1350	14"x14"	200 - 600	700 - 1000
20"x8"	150 - 600	713 - 1050	20"x8"	150 - 475	556 - 800
22"x22"	500 - 1900	2250 - 3300	22"x22"	500 - 1400	1625 - 2300
24"x12"	300 - 1125	1331 - 1950	24"x12"	300 - 850	988 - 1400
24"x24"	500 - 2200	2625 - 3900	24"x24"	600 - 1650	1913 - 2700
32"x24"	700 - 2900	3450 - 5100	32"x24"	700 - 2100	2450 - 3500

SEE BACK SUPPLEMENT FOR DESIGN INFO

NOTES: Information shown is abbreviated. See website for complete information. Dimensions in parentheses are millimeters (mm). NC ranges are based on octave band 2 - 7 sound power levels minus a room absorption of 10dB, re 10<sup>-12</sup> Watts. Data was obtained from tests conducted in accordance with ANSI/ASHRAE Standard 70, ISO Standard 5219, and ISO Standard 3741.